



REVE TWIN MANICURE TABLE

SKU:484-57

Stunning and state-of-the-art, the Reve Collection is designed to add a touch of elegance and sophistication.

The Reve Twin Manicure Table features sleek lines, clean simple box construction with no visible hardware, making this unit perfect for any salon or spa.

Also pictured as two side-by-side units, each unit is ordered separately.

TECHNICAL INFORMATION

- Measures: 56"W x 16"D x 30"H x 36"H
- 2 Full extension drawers
- 2 Storage cabinets w/ adjustable shelves
- Locking casters
- Black padded upholstered rest
- Black lamp
- Sleek, no visible hardware design
- Optional: 10633 Valentino powered vent w/ charcoal filter

SHIPPING INFORMATION

Item generally ships via Freight(Truck) service

- Weight: 190 lbs
- Dimensions: 60"L x 30"W x 47"H

WARRANTY

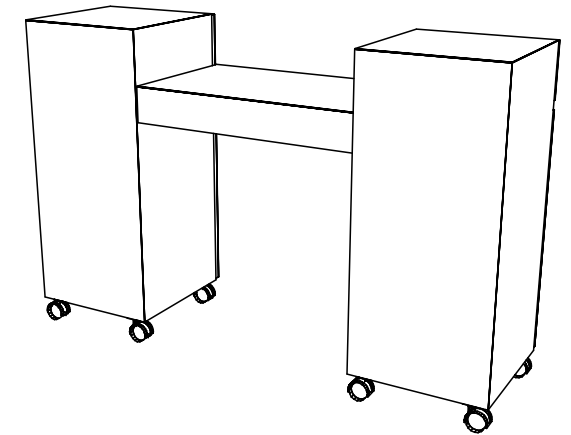
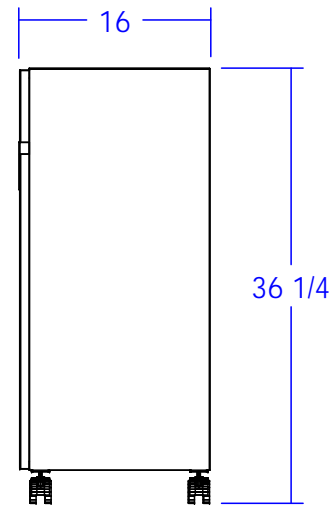
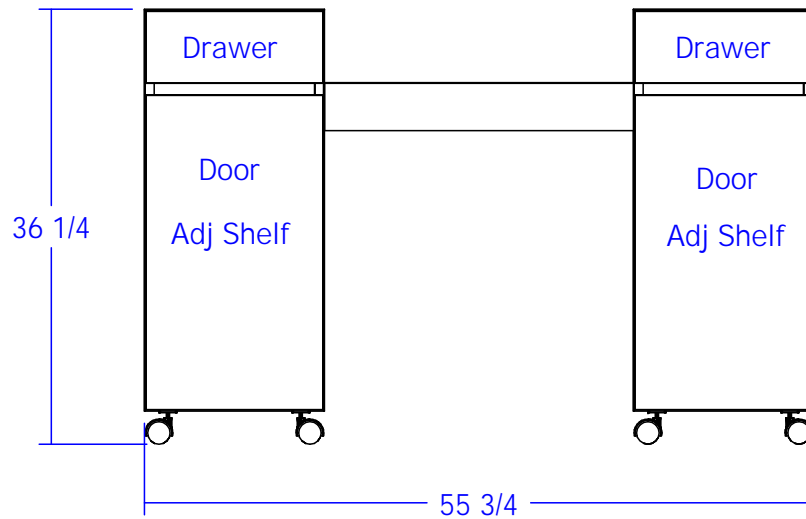
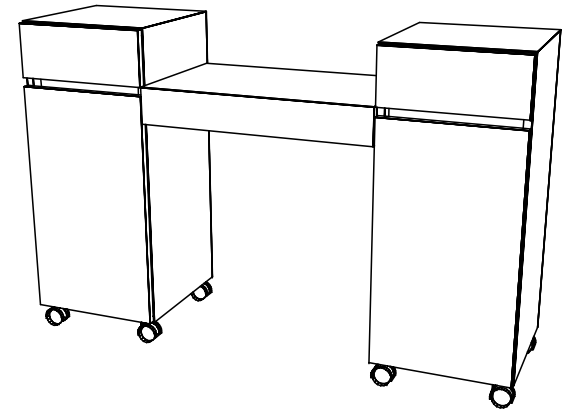
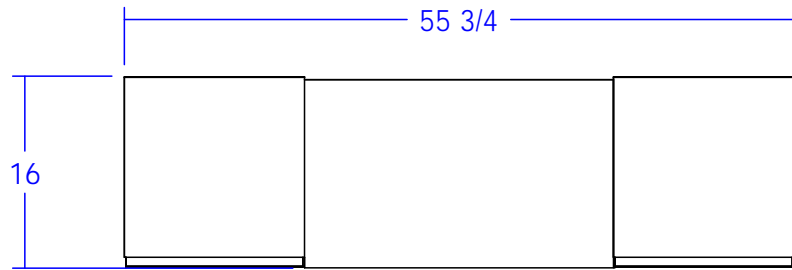
3 Years:

- Ball-Bearing Drawer Slides
- Cabinet hinges

1 Year:

- All remaining components, unless noted otherwise, are guaranteed for a period of one year from the date of purchase.






Black Lamp and Arm Pad Not Shown

Quantity -

Finish Schedule -

Face Color -
 Top Color -
 Toe Color -
 Reveal / Accent Color -
 Hardware -
 Interior -
 Other (Specify) -

This drawing is the property of Collins Manufacturing Company and is protected under copyright law.

 Collins Manufacturing 2000 Bowser Road Cookeville, TN 38506		
Title: Reve		
Size: NTS	Drawing Number: Reve	Drawn By:
Date: 12/11/08	Sheet 1 of 1	