



## REVE STANDING RECEPTION DESK

SKU:491-60

Stunning and state-of-the-art, the Reve Collection is designed to add a touch of elegance and sophistication.

Made as a Standing Reception Desk, the Reve Desk features multiple storage options, sleek lines, clean simple box construction with no visible hardware, making this unit perfect for any salon or spa.

### TECHNICAL INFORMATION

- Measures: 60"W x 23"D x 43"H
- 2 Full extension drawers
- 2 Storage cabinets w/ shelves
- 30" Wide customer ledge
- Under-ledge cubbies
- Large center cabinet w/ storage
- Opening for electronic cash drawer
- Wire grommets

### SHIPPING INFORMATION

Item generally ships via Freight(Truck) service

- Weight: 381 lbs
- Dimensions: 66"L x 32"W x 51"H

### WARRANTY

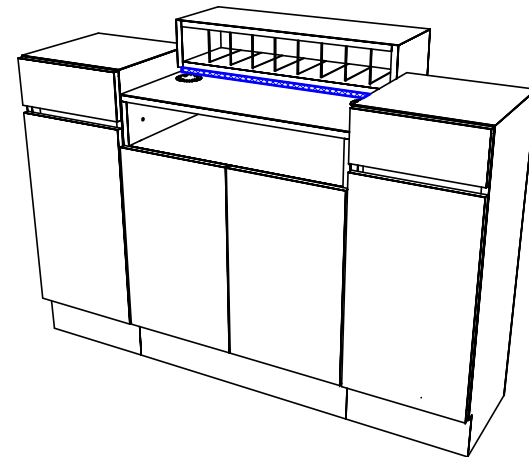
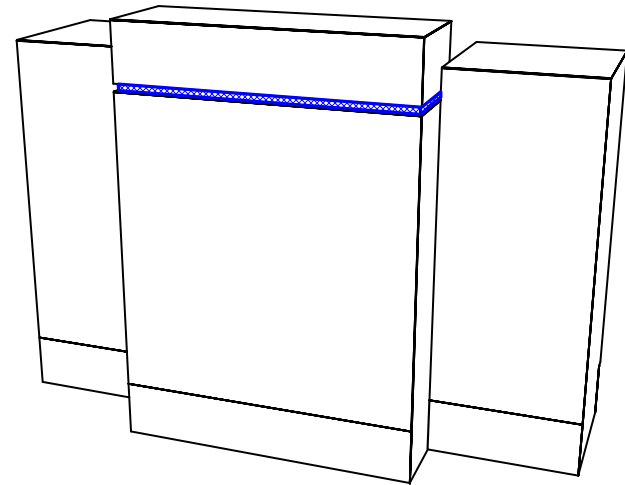
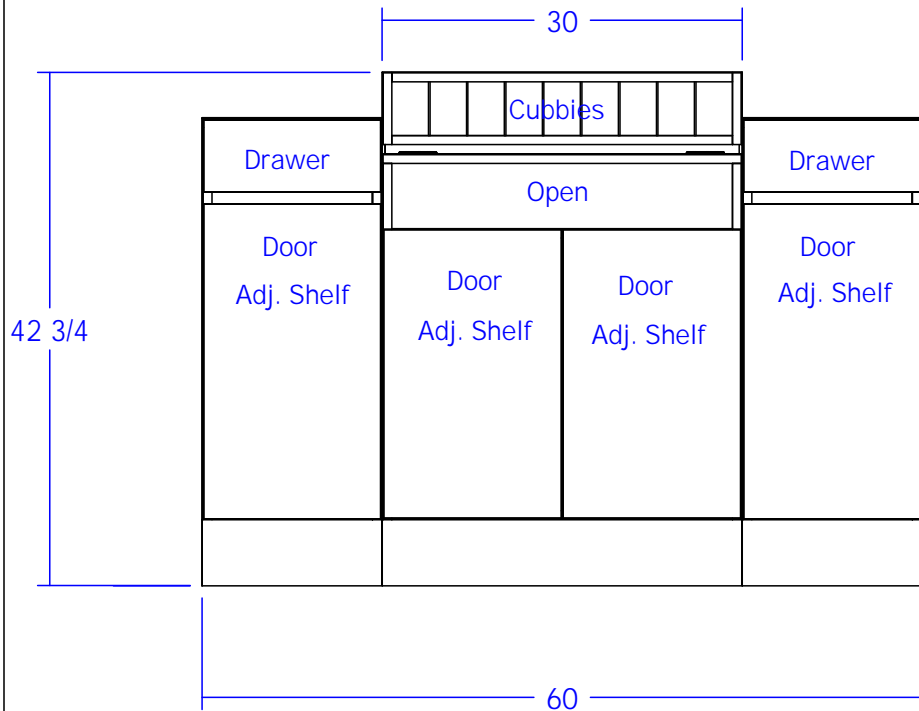
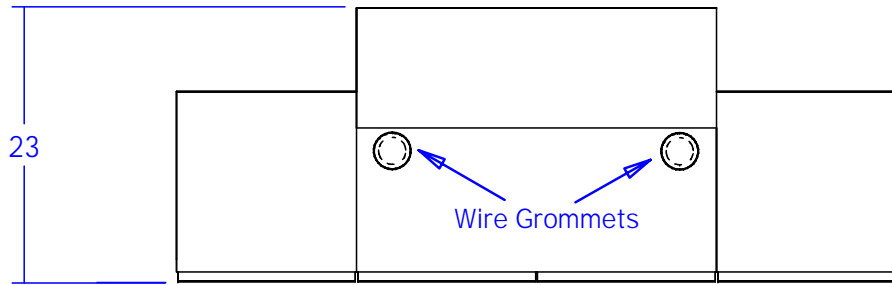
#### 3 Years:

- Ball-Bearing Drawer Slides
- Cabinet hinges

#### 1 Year:

- All remaining components, unless noted otherwise, are guaranteed for a period of one year from the date of purchase.






**Finish Schedule - 491-60-1**

Face Color -  
 Top Color -  
 Toe Color -  
 Reveal / Accent Color -  
 Hardware - N/A  
 Interior -  
 Other (Specify) -

**Preliminary  
 Not For Construction**

This drawing is the property of Collins Manufacturing Company and is protected under copyright law.

 Collins Manufacturing 2000 Bowser Road Cookeville, TN 38506		
Title: <b>491 Reve Standing Desk</b>		
Size:	Drawing Number: <b>7</b>	Drawn By: <b>B</b>
Date:	Sheet	