



## REVE SITTING RECEPTION DESK

SKU:492-60

Stunning and state-of-the-art, the Reve Collection is designed to add a touch of elegance and sophistication.

Made for as a Sitting Reception Desk, the Reve Desk features multiple storage options, sleek lines, clean simple box construction with no visible hardware, making this unit perfect for any salon or spa.

### TECHNICAL INFORMATION

- Measures: 60"W x 23"D x 43"H
- 2 Full extension drawers
- 2 Storage cabinets w/ shelves
- 30" Wide customer ledge
- 30" High work surface w/ pull out keyboard tray
- Computer ledge in chair well
- Wire grommets
- Sleek, no visible hardware

### SHIPPING INFORMATION

Item generally ships via Freight(Truck) service

- Weight: 350 lbs
- Dimensions: 66"L x 32"W x 52"H

### WARRANTY

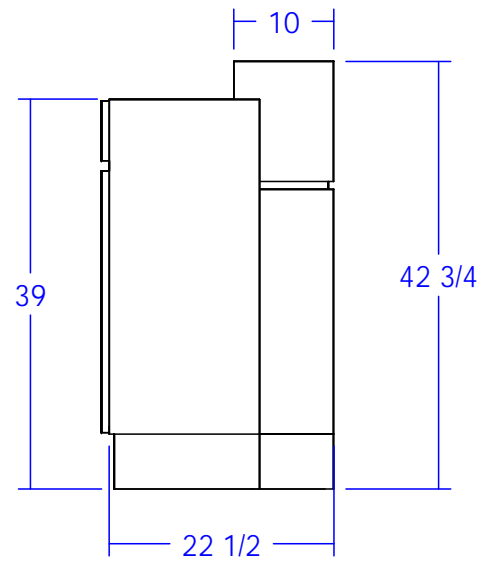
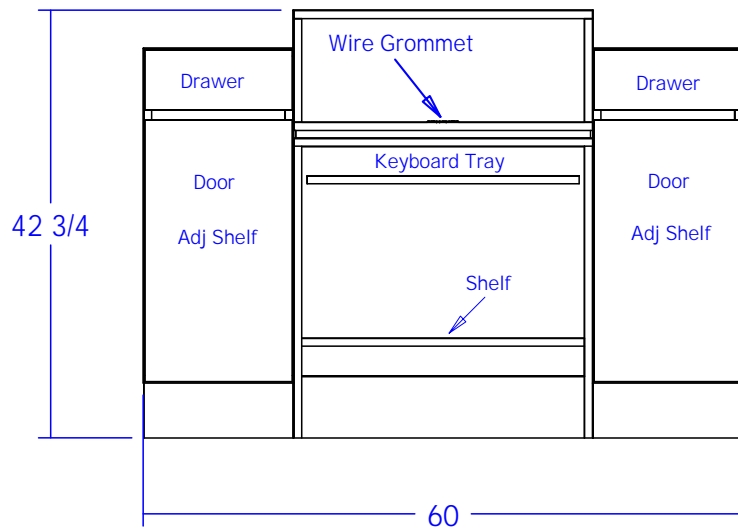
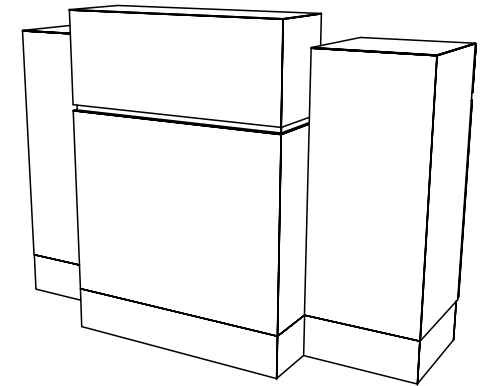
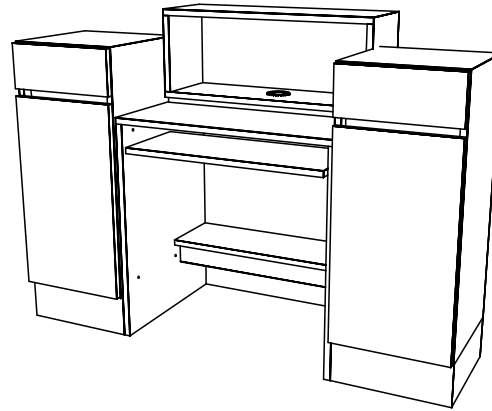
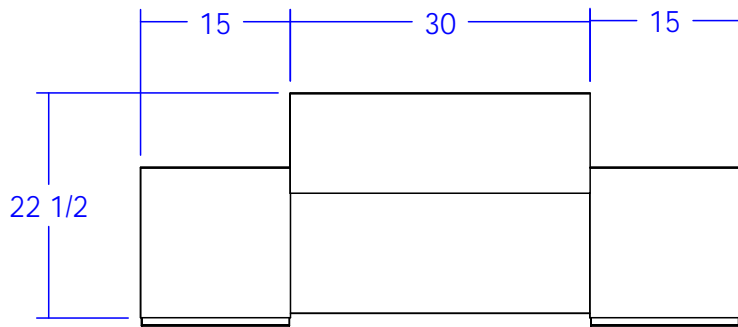
#### 3 Years:

- Ball-Bearing Drawer Slides
- Cabinet hinges

#### 1 Year:

- All remaining components, unless noted otherwise, are guaranteed for a period of one year from the date of purchase.





Quantity -

Finish Schedule -

Face Color -  
 Top Color -  
 Toe Color -  
 Reveal / Accent Color -  
 Hardware -  
 Interior -  
 Other (Specify) -

This drawing is the property of Collins Manufacturing Company and is protected under copyright law.

**collins** Collins Manufacturing  
 2000 Bowser Road  
 Cookeville, TN 38506

Title:		
Size: NTS	Drawing Number: Reve	Drawn By:
Date: 12/04/08	Sheet 1 of 1	