



NEO ERIE WET STATION

SKU:4421-42



This Neo Erie Wet Station is the perfect addition to any salon. This unit includes a shampoo station and styling station in one space that provides a convenient solution for all of your salon services.

Matching the Neo family collection, the inlay accent doubles as a pull out breadboard and tall toe-kick detail making this both functional and beautiful.

Wet stations are great for small spaces, barber shops or elderly care salons.

TECHNICAL INFORMATION

- Measures: 42"W x 16"D x 39"H
- Breadboard pull-out
- 2 Full extension drawers
- Shampoo bottle well & full sized lift lid
- 36" x 42" Mirror
- 3"H backsplash
- Neo bar pulls
- Tilt-out tool panel
 - Blow dryer
 - Flat iron
 - 1" Curling iron
 - 2" Curling iron
 - Clippers
- Pictured w/ CBI9 Shampoo Bowl, ordered separately

SHIPPING INFORMATION

Item generally ships via Freight(Truck) service

- Weight: 264 lbs
- Dimensions: 48"L x 32"W x 48"H

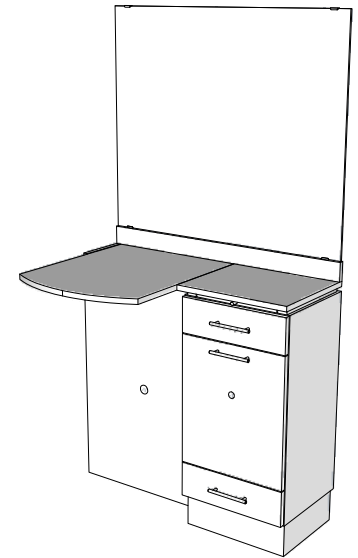
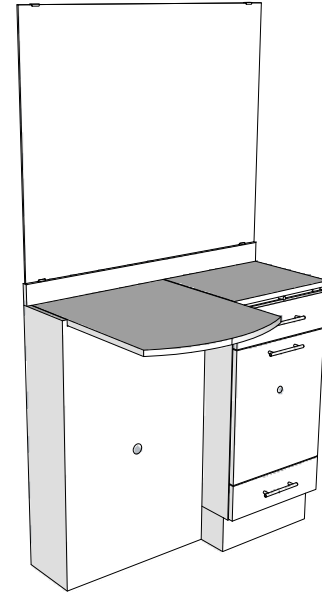
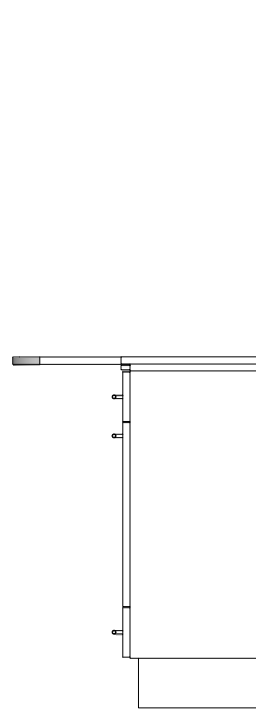
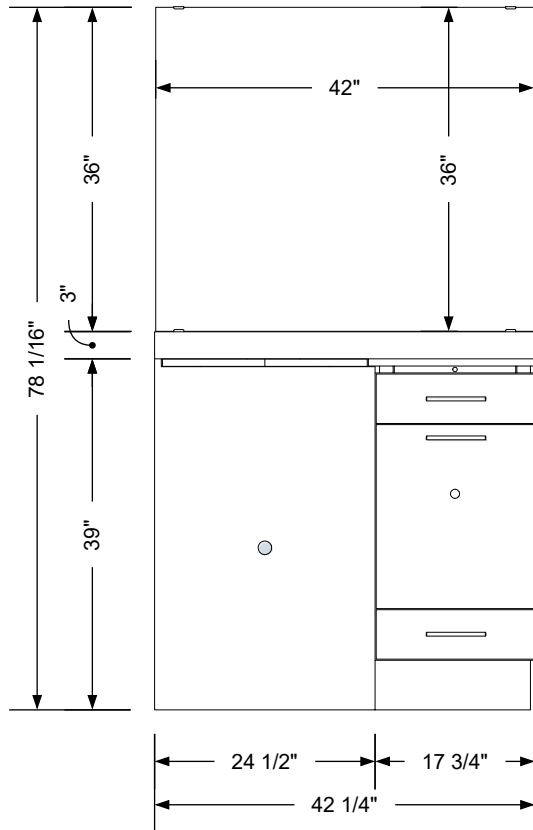
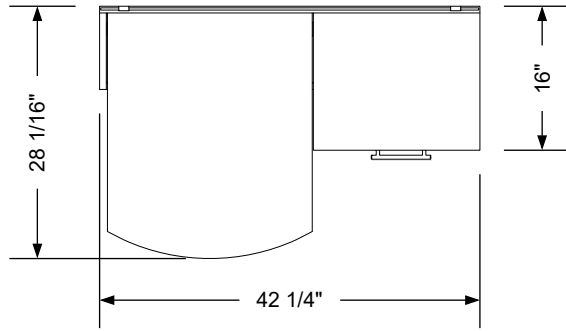
WARRANTY

3 Years:

- Ball-Bearing Drawer Slides
- Cabinet hinges

1 Year:

- All remaining components, unless noted otherwise, are guaranteed for a period of one year from the date of purchase.



Additional Information

Assembly required - yes
 Electrical required - yes
 Plumbing required - yes
 Wall blocking required - no
 COM yardage/laminate usage - 44 sf
 5 1/2"h laminated toe + 1/4"h glides
 Other (specify) - n/a
 Other (specify) - n/a

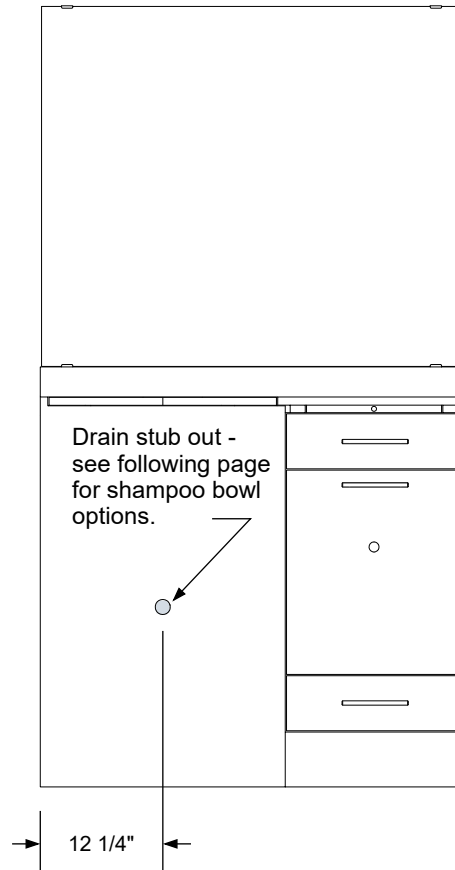
Specification Drawing

This **Specification Drawing** is intended for communicating the basic description, function, appearance, dimensions, features, and installation of an item as manufactured by Collins Manufacturing Company. Because this drawing does not contain project specific information such as quantities, finishes, or options, it is not an approval drawing and does not require a signature. This drawing remains the property of Collins Manufacturing Company and must not be used against the interests of Collins Manufacturing Company.

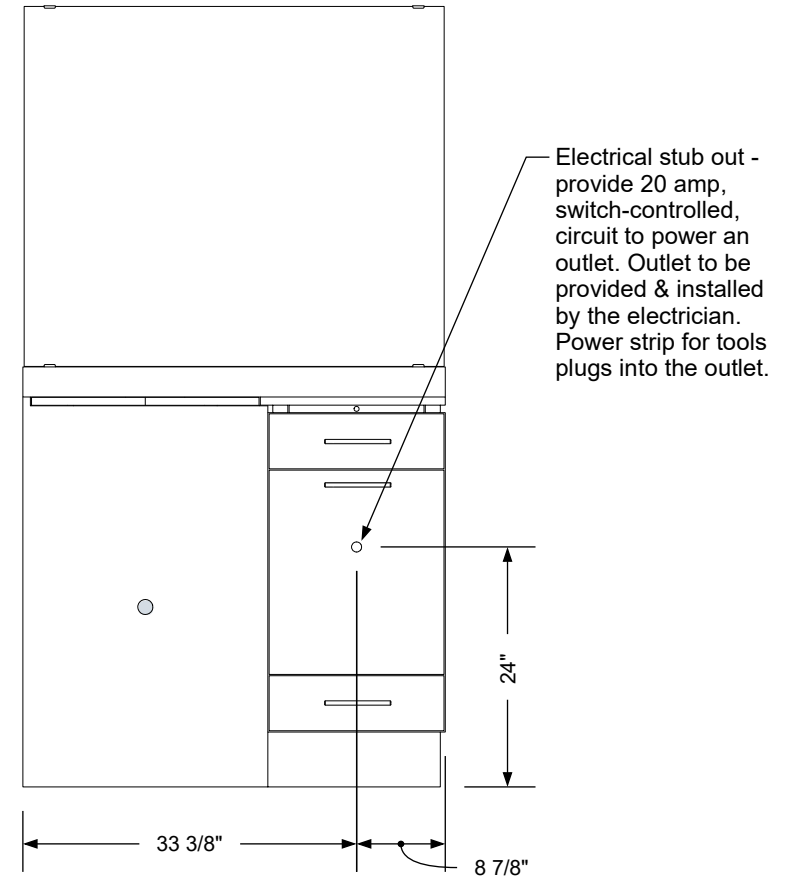


Collins Manufacturing
 2000 Bowser Road
 Cookeville, TN 38506

Title: Neo Erie Wet Station			
Size: NTS	Part Number: 4421-42	Drawn By: Eng	
Prepared Date: 4/21/21	Revision Date: Date	Revision Number: Rev #	Sheet: 1 of 3



Plumbing stub out detail




Electrical stub out detail

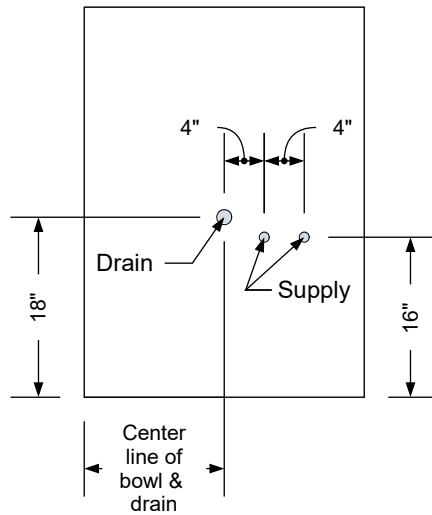
Additional Information

Assembly required - yes
 Electrical required - yes
 Plumbing required - yes
 Wall blocking required - no
 COM yardage/laminate usage - 44 sf
 5 1/2"h laminated toe + 1/4"h glides
 Other (specify) - n/a
 Other (specify) - n/a

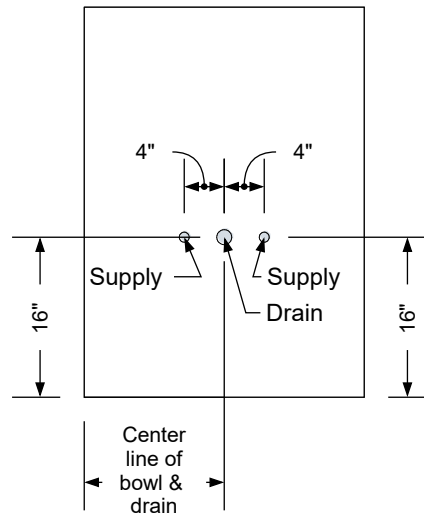
Specification Drawing

This **Specification Drawing** is intended for communicating the basic description, function, appearance, dimensions, features, and installation of an item as manufactured by Collins Manufacturing Company. Because this drawing does not contain project specific information such as quantities, finishes, or options, it is not an approval drawing and does not require a signature. This drawing remains the property of Collins Manufacturing Company and must not be used against the interests of Collins Manufacturing Company.

 Collins Manufacturing 2000 Bowser Road Cookeville, TN 38506			
Title: Neo Erie Wet Station			
Size: NTS	Part Number: 4421-42	Drawn By: Eng	
Prepared Date: 4/21/21	Revision Date: Date	Revision Number: Rev #	Sheet: 2 of 3

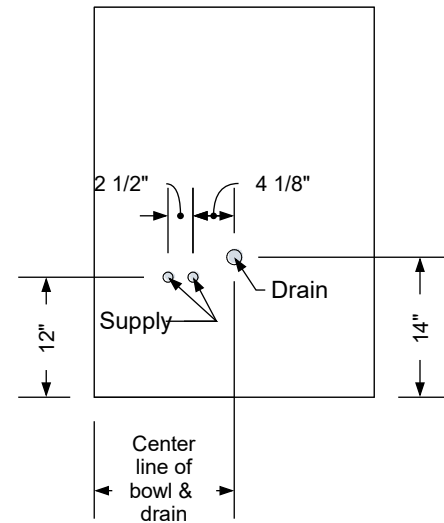


Standard Shampoo Bowl



T100 w/ Tilting Shampoo Bowl

Note: Lift Lid Must Be Reduced In Size To Use This Option.



K100 Adjust-A-Sink Shampoo Bowl

Note: Lift Lid Must Be Reduced In Size To Use This Option.


Typical Collins Shampoo Bowl Options

Additional Information

Assembly required - yes
Electrical required - yes
Plumbing required - yes
Wall blocking required - no
COM yardage/laminate usage - 44 sf
5 1/2"h laminated toe + 1/4"h glides
Other (specify) - n/a
Other (specify) - n/a

Specification Drawing

This **Specification Drawing** is intended for communicating the basic description, function, appearance, dimensions, features, and installation of an item as manufactured by Collins Manufacturing Company. Because this drawing does not contain project specific information such as quantities, finishes, or options, it is not an approval drawing and does not require a signature. This drawing remains the property of Collins Manufacturing Company and must not be used against the interests of Collins Manufacturing Company.

 Collins Manufacturing 2000 Bowser Road Cookeville, TN 38506			
Title: Neo Erie Wet Station			
Size: NTS	Part Number: 4421-42	Drawn By: Eng	
Prepared Date: 4/21/21	Revision Date: Date	Revision Number: Rev #	Sheet: 3 of 3