



## NEO ONTARIO WET STATION

SKU:4423-60



This Neo Ontario Wet Station is the perfect addition to any salon. This unit includes a shampoo station and styling station in one space that provides a convenient solution for all of your salon services.

Providing extra upper cabinet storage, combined with inlay accents and tall toe-kick detail make this both functional and beautiful.

Wet stations are great for small spaces, barber shops or elderly care salons.

### TECHNICAL INFORMATION

---

- Measures: 60"W x 16"D x 81"H
- Breadboard pull-out
- 2 Full extension drawers
- Tilt-out door for clean towel storage
- Tilt-out door w/ soiled towel hamper
- Upper storage cabinet w/ adjustable shelves
- Shampoo bottle well & full sized lift lid
- 36" x 42" Mirror
- 3"H backsplash
- Tilt-out tool panel
  - Blow dryer
  - Flat iron
  - 1" Curling iron
  - 2" Curling iron
  - Clippers
- Pictured w/ CB19 Shampoo Bowl, ordered separately

### SHIPPING INFORMATION

---

Item generally ships via Freight(Truck) service

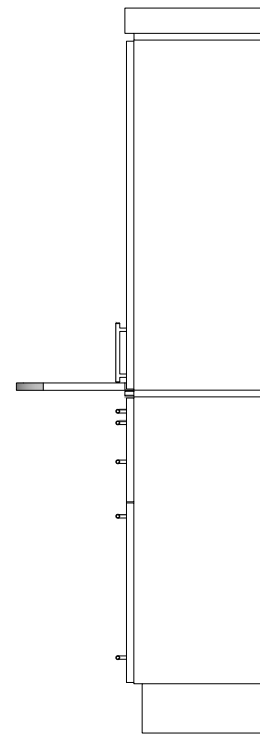
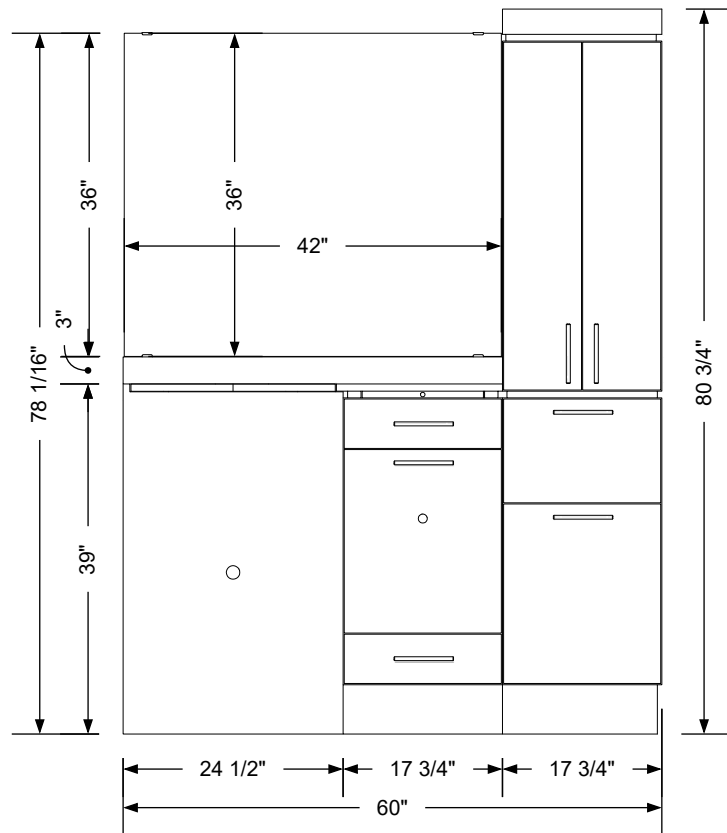
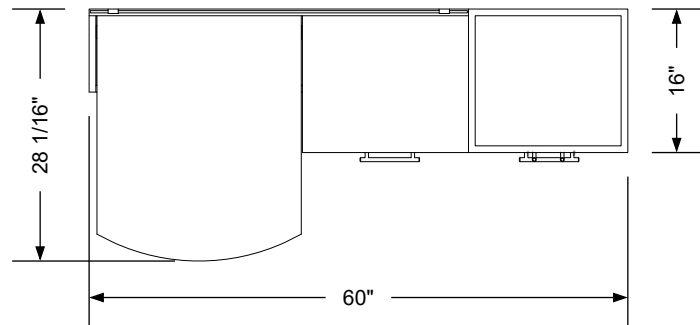
- Weight: 452 lbs
- Dimensions: 1 skid 1 carton

### WARRANTY

---

#### 5 Years:

- Anti-fatigue mats are guaranteed for five years from the date of purchase.



## Additional Information

Assembly required - yes  
 Electrical required - yes  
 Plumbing required - yes  
 Wall blocking required - yes  
 COM yardage/laminate usage - 82 sf  
 5 1/2"h laminated toe + 1/4"h glides  
 Other (specify) - n/a  
 Other (specify) - n/a

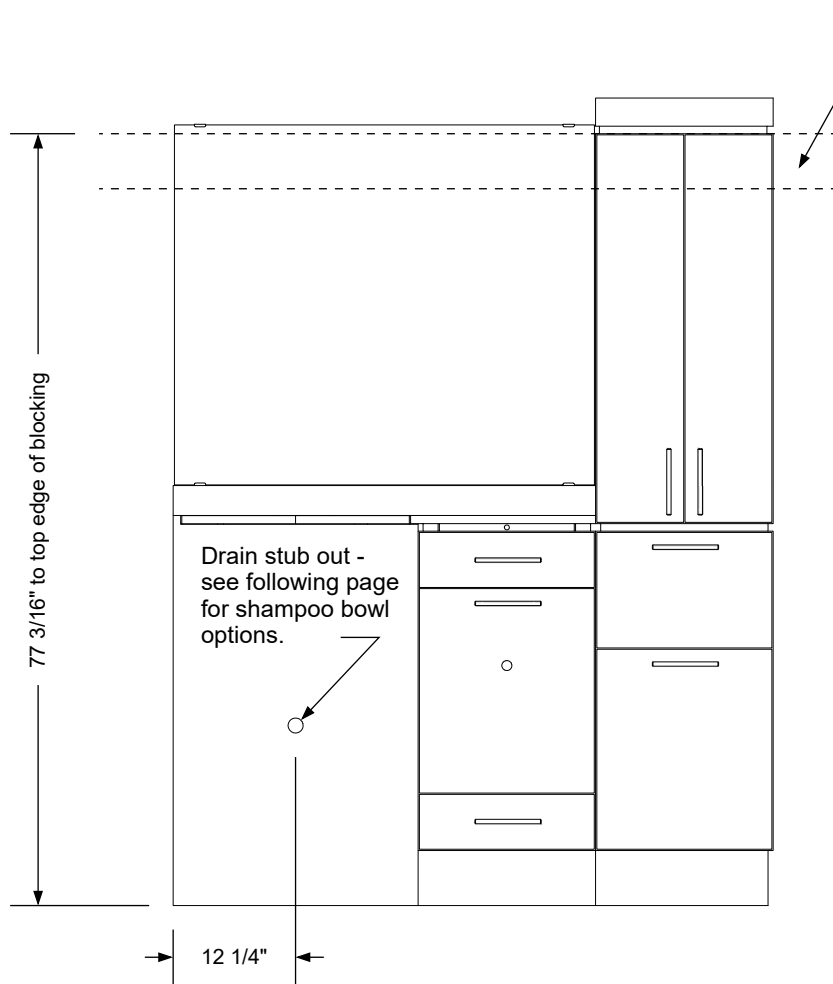
## Specification Drawing

This **Specification Drawing** is intended for communicating the basic description, function, appearance, dimensions, features, and installation of an item as manufactured by Collins Manufacturing Company. Because this drawing does not contain project specific information such as quantities, finishes, or options, it is not an approval drawing and does not require a signature. This drawing remains the property of Collins Manufacturing Company and must not be used against the interests of Collins Manufacturing Company.

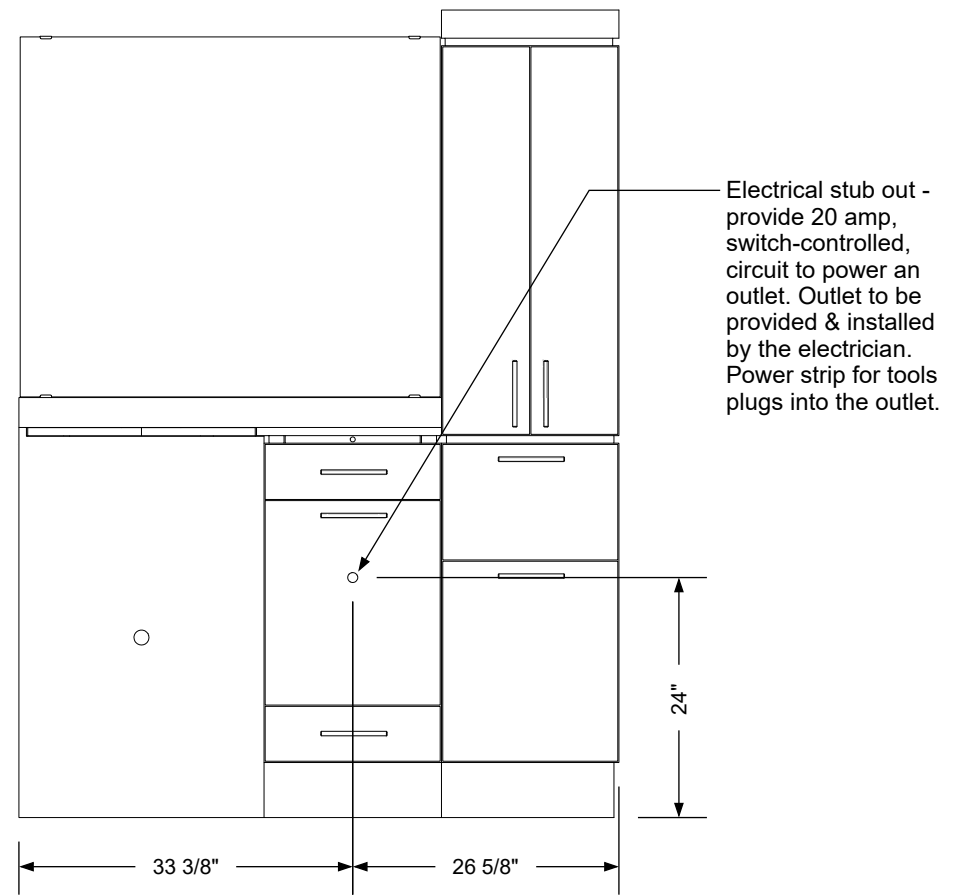


Collins Manufacturing  
 2000 Bowser Road  
 Cookeville, TN 38506

Title: <b>Neo Ontario Wet Station</b>			
Size: <b>NTS</b>	Part Number: <b>4423-60</b>	Drawn By: <b>Eng</b>	
Prepared Date: <b>3/22/21</b>	Revision Date: <b>Date</b>	Revision Number: <b>Rev #</b>	Sheet: <b>1 of 3</b>



**Plumbing stub out & blocking detail**



**Electrical stub out detail**

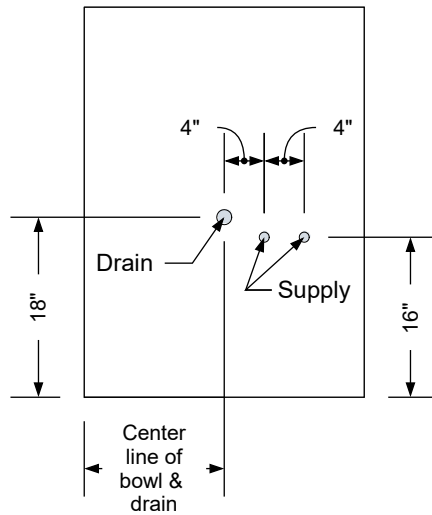
### Additional Information

Assembly required - yes  
 Electrical required - yes  
 Plumbing required - yes  
 Wall blocking required - yes  
 COM yardage/laminate usage - 82 sf  
 5 1/2"h laminated toe + 1/4"h glides  
 Other (specify) - n/a  
 Other (specify) - n/a

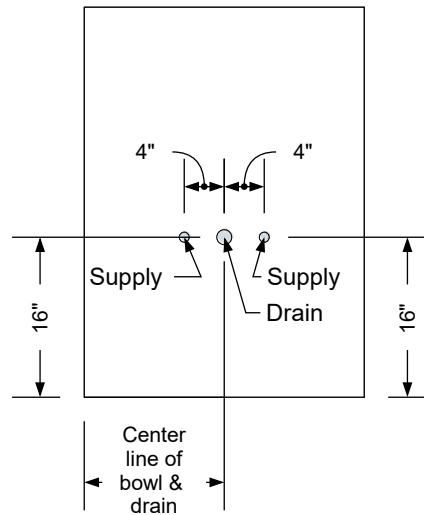
### Specification Drawing

This **Specification Drawing** is intended for communicating the basic description, function, appearance, dimensions, features, and installation of an item as manufactured by Collins Manufacturing Company. Because this drawing does not contain project specific information such as quantities, finishes, or options, it is not an approval drawing and does not require a signature. This drawing remains the property of Collins Manufacturing Company and must not be used against the interests of Collins Manufacturing Company.

		Collins Manufacturing 2000 Bowser Road Cookeville, TN 38506	
Title:  Neo Ontario Wet Station			
Size:  NTS	Part Number:  4423-60		Drawn By:  Eng
Prepared Date: 3/22/21	Revision Date: Date	Revision Number: Rev #	Sheet: 2 of 3

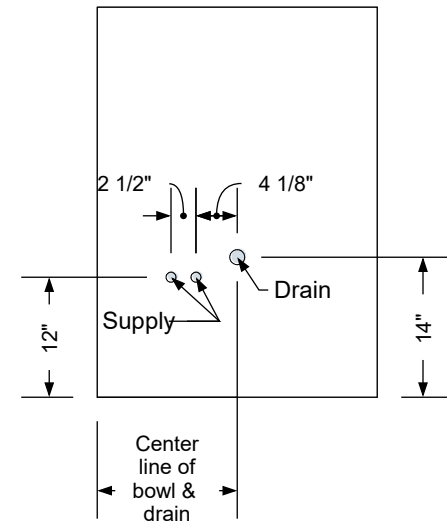


**Standard Shampoo Bowl**



**T100 w/ Tilting Shampoo Bowl**

**Note: Lift Lid Must Be Reduced In Size To Use This Option.**



**K100 Adjust-A-Sink Shampoo Bowl**

**Note: Lift Lid Must Be Reduced In Size To Use This Option.**


**Typical Collins Shampoo Bowl Options**

**Additional Information**

Assembly required - yes  
Electrical required - yes  
Plumbing required - yes  
Wall blocking required - yes  
COM yardage/laminate usage - 82 sf  
5 1/2"h laminated toe + 1/4"h glides  
Other (specify) - n/a  
Other (specify) - n/a

**Specification Drawing**

This **Specification Drawing** is intended for communicating the basic description, function, appearance, dimensions, features, and installation of an item as manufactured by Collins Manufacturing Company. Because this drawing does not contain project specific information such as quantities, finishes, or options, it is not an approval drawing and does not require a signature. This drawing remains the property of Collins Manufacturing Company and must not be used against the interests of Collins Manufacturing Company.

 Collins Manufacturing 2000 Bowser Road Cookeville, TN 38506			
Title: Neo Ontario Wet Station			
Size: NTS	Part Number: 4423-60	Drawn By: Eng	
Prepared Date: 3/22/21	Revision Date: Date	Revision Number: Rev #	Sheet: 3 of 3