



NEO BARBER STATION

SKU:4425-72

The Neo Barber Station is the perfect space for you to work and offers a spot for your tools and supplies in one convenient place. This unit features storage on either side, keeping all your tools and supplies close at hand.

TECHNICAL INFORMATION

- Measures: 72 1/2"W x 16"D x 78"H
- Pull-out breadboard
- 2 full extension drawers
- Tip-out tool panel
 - Blow dryer
 - Flat iron
 - 1" Curling iron
 - 2" Curling iron
 - Clippers
- Tilt-out door for clean towel storage
- Tilt-out door w/ soiled towel hamper
- Shampoo bottle well & short lift lid
- 36" x 42" mirror
- Neo bar pulls
- Shampoo bowl ordered separately

SHIPPING INFORMATION

Item generally ships via Freight(Truck) service

- Weight: 410 lbs
- Dimensions: 84"L x 32"W x 47"H

WARRANTY

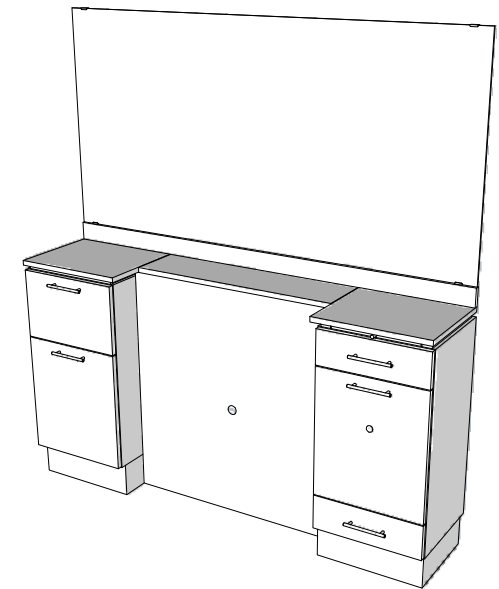
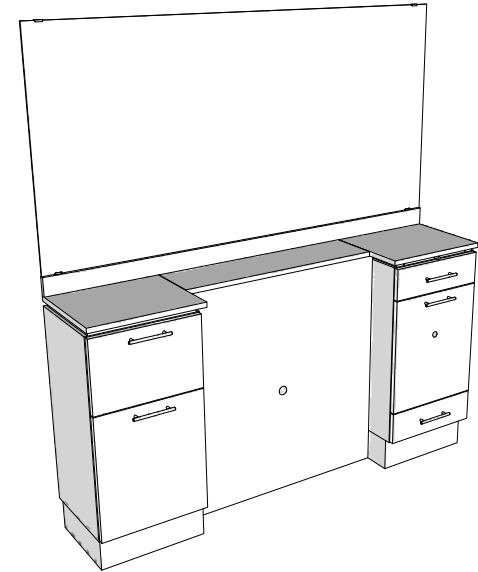
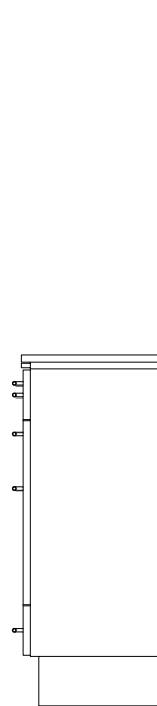
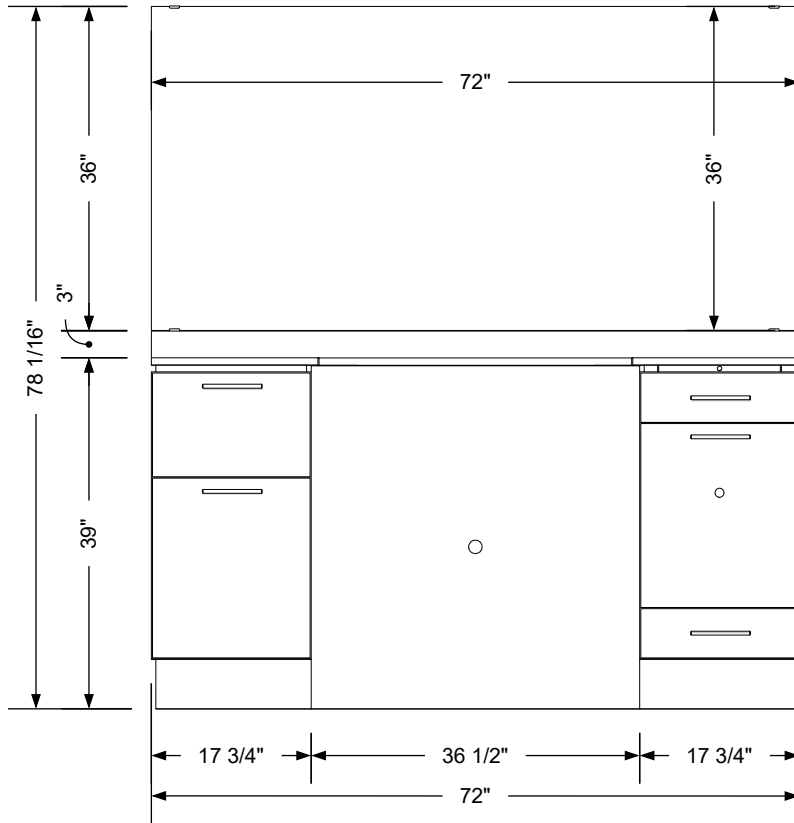
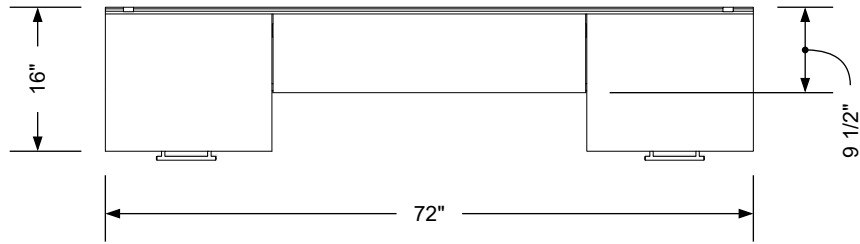
3 Years:

- Ball-Bearing Drawer Slides
- Cabinet hinges

1 Year:

- All remaining components, unless noted otherwise, are guaranteed for a period of one year from the date of purchase.





Additional Information

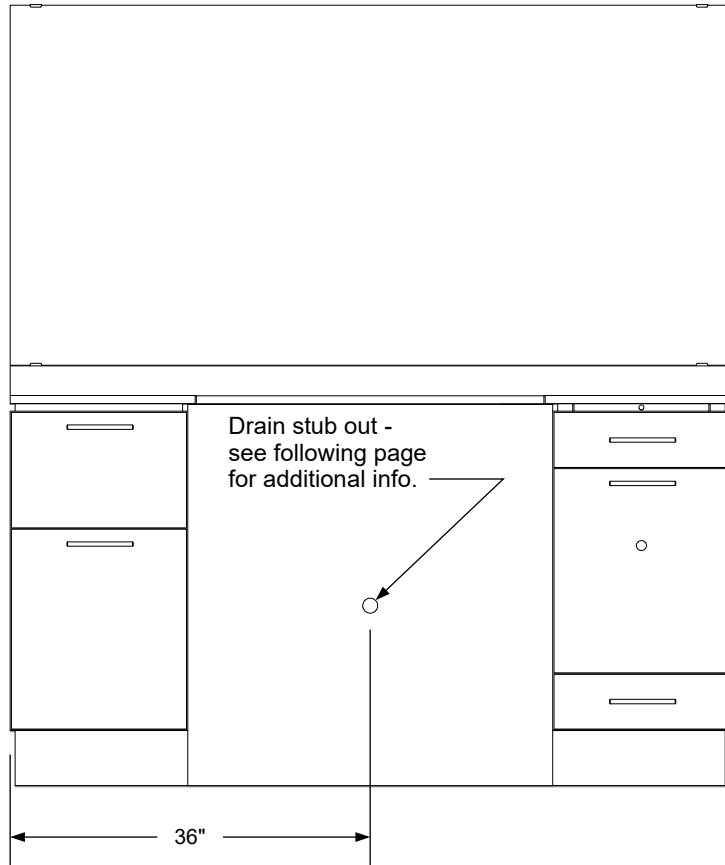
Assembly required - yes
 Electrical required - yes
 Plumbing required - yes
 Wall blocking required - no
 COM yardage/laminate usage - 66 sf
 5 1/2" h laminated toe + 1/4" h glides
 Other (specify) - n/a
 Other (specify) - n/a

Specification Drawing

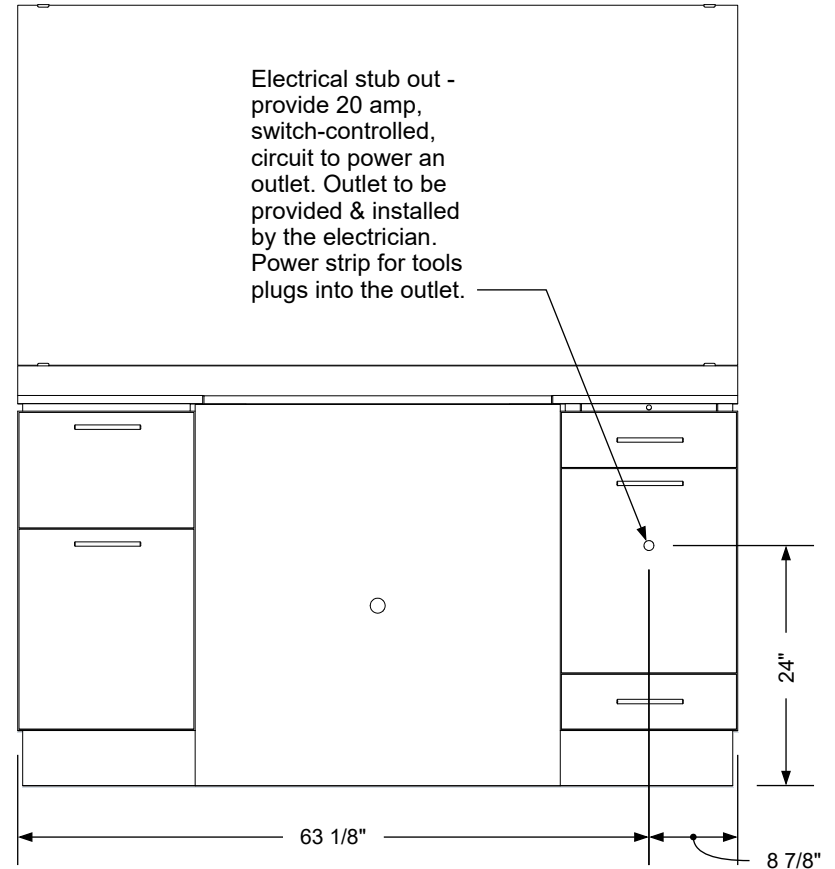
This **Specification Drawing** is intended for communicating the basic description, function, appearance, dimensions, features, and installation of an item as manufactured by Collins Manufacturing Company. Because this drawing does not contain project specific information such as quantities, finishes, or options, it is not an approval drawing and does not require a signature. This drawing remains the property of Collins Manufacturing Company and must not be used against the interests of Collins Manufacturing Company.

 Collins Manufacturing
 2000 Bowser Road
 Cookeville, TN 38506

Title: Neo Barber Station			
Size: NTS	Part Number: 4425-72	Drawn By: Eng	
Prepared Date: 4/29/21	Revision Date: Date	Revision Number: Rev #	Sheet: 1 of 3



Plumbing stub out detail




Electrical stub out detail

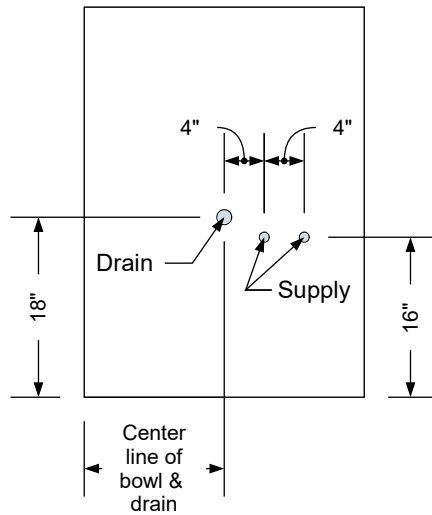
Additional Information

Assembly required - yes
 Electrical required - yes
 Plumbing required - yes
 Wall blocking required - no
 COM yardage/laminate usage - 66 sf
 5 1/2"h laminated toe + 1/4"h glides
 Other (specify) - n/a
 Other (specify) - n/a

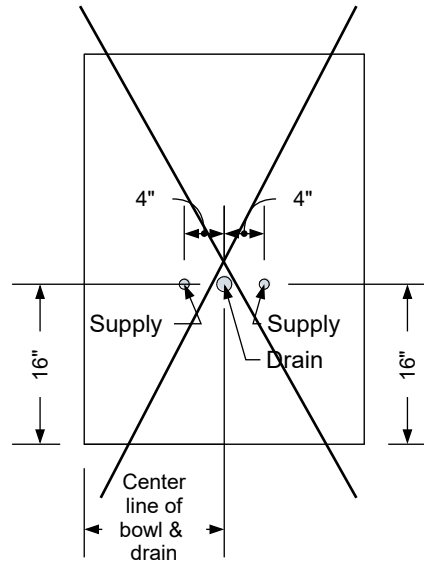
Specification Drawing

This **Specification Drawing** is intended for communicating the basic description, function, appearance, dimensions, features, and installation of an item as manufactured by Collins Manufacturing Company. Because this drawing does not contain project specific information such as quantities, finishes, or options, it is not an approval drawing and does not require a signature. This drawing remains the property of Collins Manufacturing Company and must not be used against the interests of Collins Manufacturing Company.

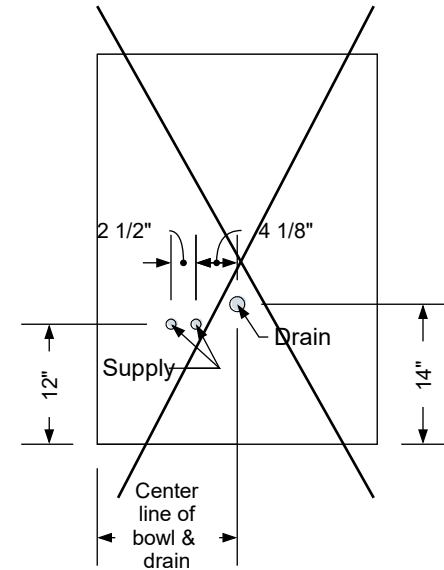
		Collins Manufacturing 2000 Bowser Road Cookeville, TN 38506	
		Title: Neo Barber Station	
Size:	Part Number:	Drawn By:	
NTS	4425-72	Eng	
Prepared Date:	Revision Date:	Revision Number:	Sheet:
4/29/21	Date	Rev #	2 of 3



Standard Shampoo Bowl



T100 w/ Tilting Shampoo Bowl
Note: Lift Lid Must Be Reduced In Size To Use This Option.



K100 Adjust-A-Sink Shampoo Bowl
Note: Lift Lid Must Be Reduced In Size To Use This Option.

Typical Collins Shampoo Bowl Options

Additional Information

Assembly required - yes
 Electrical required - yes
 Plumbing required - yes
 Wall blocking required - no
 COM yardage/laminate usage - 66 sf
 5 1/2"h laminated toe + 1/4"h glides
 Other (specify) - n/a
 Other (specify) - n/a

Specification Drawing

This **Specification Drawing** is intended for communicating the basic description, function, appearance, dimensions, features, and installation of an item as manufactured by Collins Manufacturing Company. Because this drawing does not contain project specific information such as quantities, finishes, or options, it is not an approval drawing and does not require a signature. This drawing remains the property of Collins Manufacturing Company and must not be used against the interests of Collins Manufacturing Company.

		Collins Manufacturing 2000 Bowser Road Cookeville, TN 38506	
Title: Neo Barber Station			
Size: NTS	Part Number: 4425-72	Drawn By: Eng	
Prepared Date: 4/29/21	Revision Date: Date	Revision Number: Rev #	Sheet: 3 of 3