



## REVE TOWER STYLING STATION WITH STORAGE

SKU:467-48

Stunning and state-of-the-art, the Reve Collection is designed to add a touch of elegance and sophistication.

The Reve Tower Styling Station features an upper & lower storage cabinet, sleek lines, clean simple style with no visible hardware, making this unit perfect for any salon.

### TECHNICAL INFORMATION

---

- Measures: 48"W x 16"D x 81"H
- Full extension drawer, ball bearing slides
- Storage cabinet w/ adjustable shelf
- 30" x 48" mirror w/ twin accent panels
- Closed upper storage w/ adjustable shelves
- Ledge w/ tool holder
  - Blow dryer
  - Curling iron
  - Flat iron

### SHIPPING INFORMATION

---

Item generally ships via Freight(Truck) service

- Weight: 494 lbs
- Dimensions: 1 carton 1 skid

### WARRANTY

---

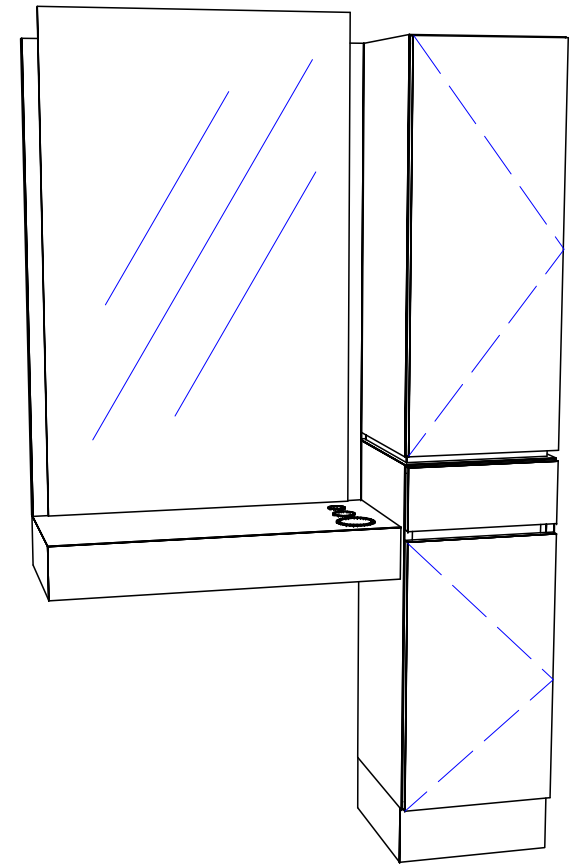
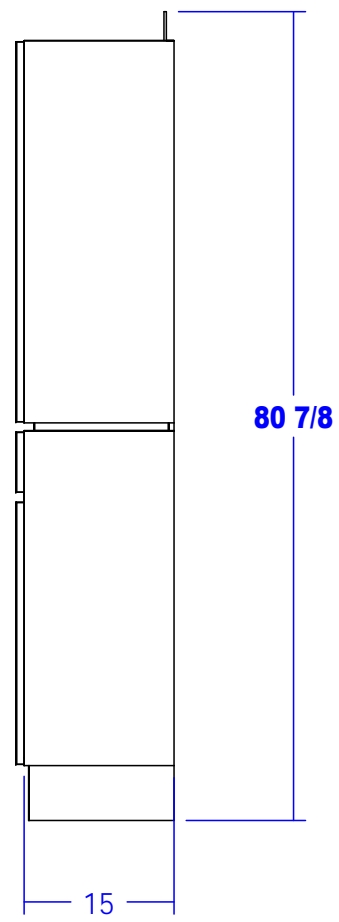
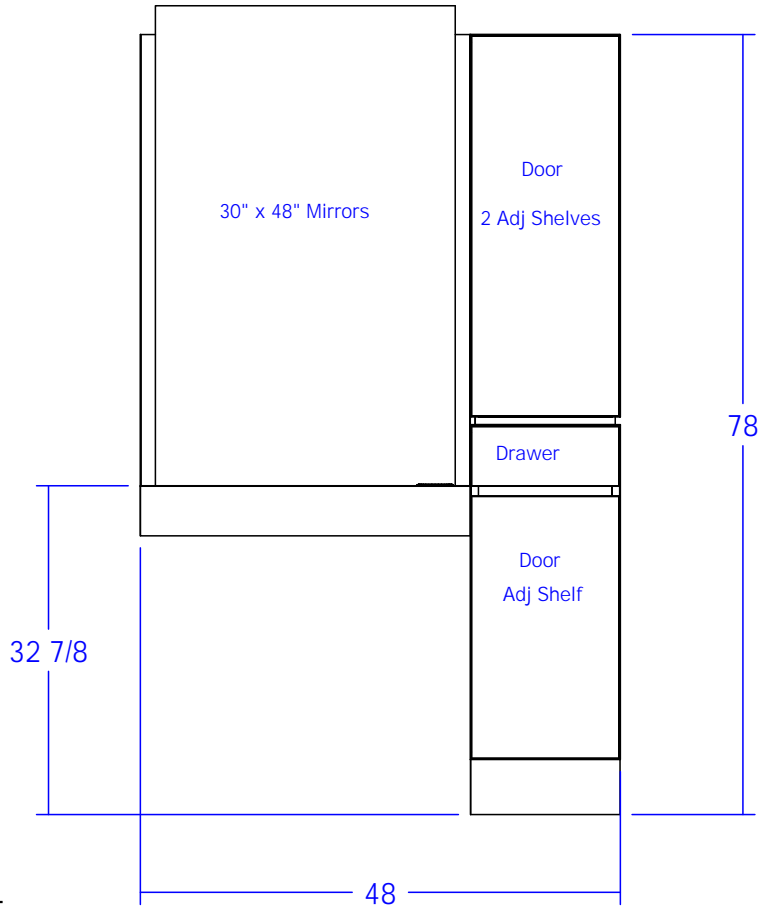
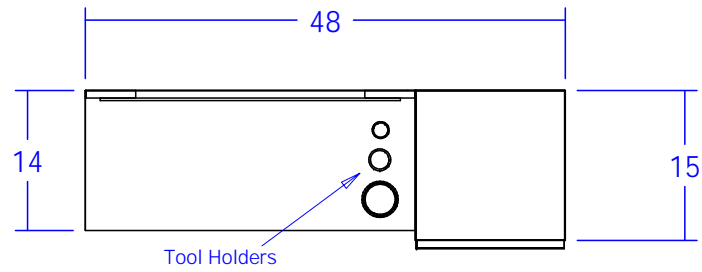
#### 3 Years:

- Ball-Bearing Drawer Slides
- Cabinet hinges

#### 1 Year:

- All remaining components, unless noted otherwise, are guaranteed for a period of one year from the date of purchase.





Quantity -

Finish Schedule -

Face Color -  
 Top Color -  
 Toe Color -  
 Reveal / Accent Color -  
 Hardware -  
 Interior -  
 Other (Specify) -

This drawing is the property of Collins Manufacturing Company and is protected under copyright law.



Collins Manufacturing  
 2000 Bowser Road  
 Cookeville, TN 38506

Title:		
Size: NTS	Drawing Number: Reve	Drawn By:
Date: 12/04/08	Sheet 1 of 1	