



## EDGE 66 BARBER STATION

SKU:6626-66

The Edge 66 Barber Station is a modern, sleek design that can fit with both contemporary or traditional style. The push-to-open drawers offer extra storage for accessories and men's grooming tools.

Includes CBI9 Bowl and Framed Mirror.

### TECHNICAL INFORMATION

- Measures: 66"W x 21"D x 39"H
- 30" wide center cabinet w/ bowl
- 2 molded bottle wells
- Plumbing access doors
- Two 18" W cabinets
- Lower storage
- Barbicide holder
- Left-to-right wire-chase provided
- 66"W x 42"H Framed wall-mounted mirror

### SHIPPING INFORMATION

Item generally ships via Freight(Truck) service

- Weight: 350 lbs
- Dimensions: 72"L x 32"W x 50"H

### WARRANTY

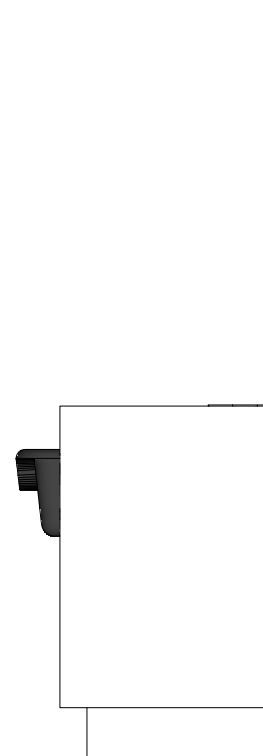
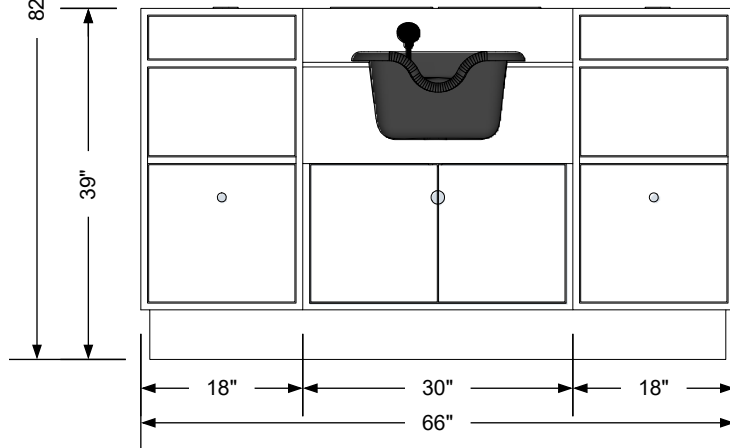
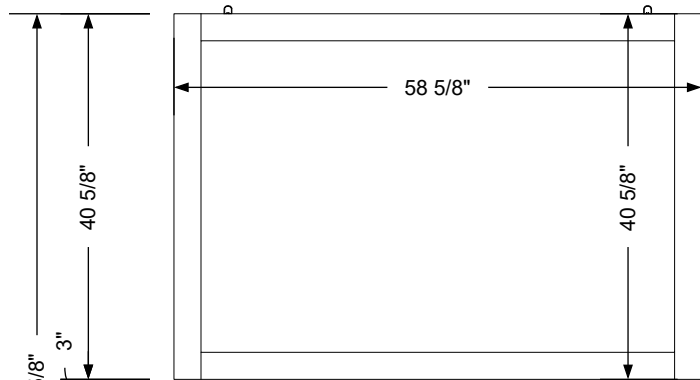
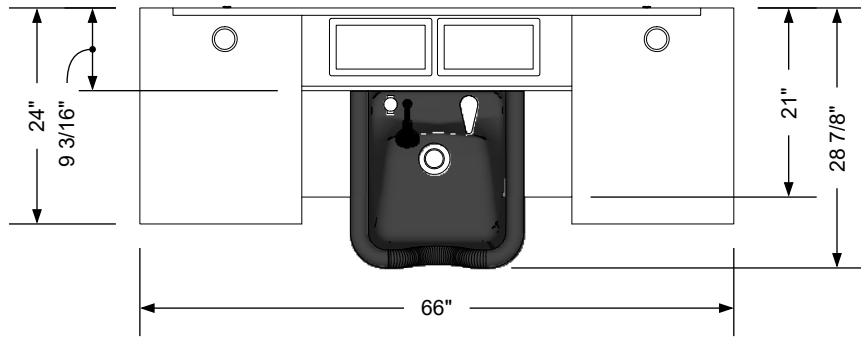
#### 3 Years:

- Ball-Bearing Drawer Slides
- Cabinet hinges

#### 1 Year:

- All remaining components, unless noted otherwise, are guaranteed for a period of one year from the date of purchase.





### Additional Information

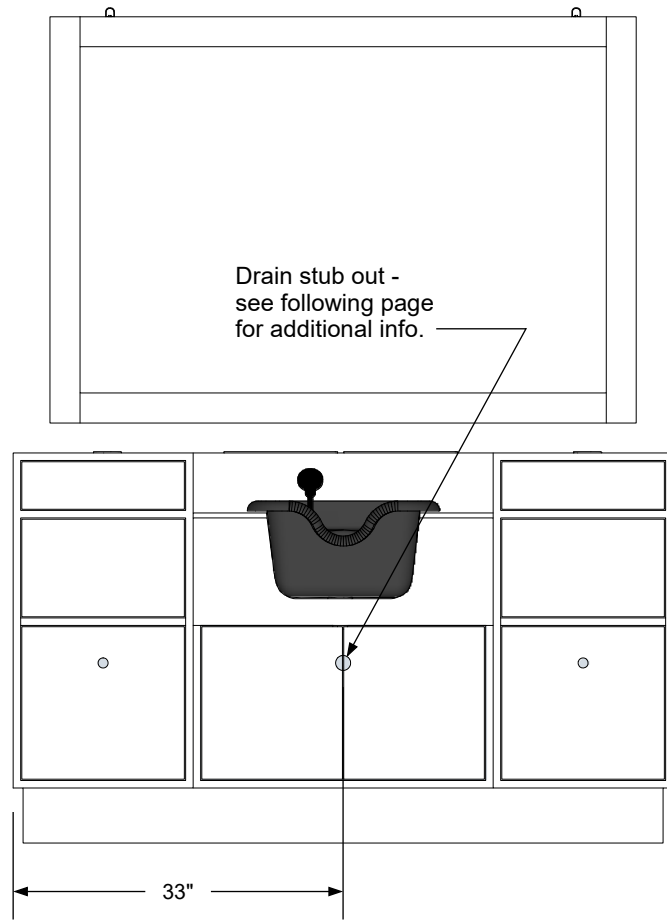
Assembly required - yes  
 Electrical required - yes  
 Plumbing required - yes  
 Wall blocking required - no  
 COM yardage/laminate usage - 96 sf  
 5 1/2" h laminated toe + 1/4" h glides  
 Other (specify) - n/a  
 Other (specify) - n/a

### Specification Drawing

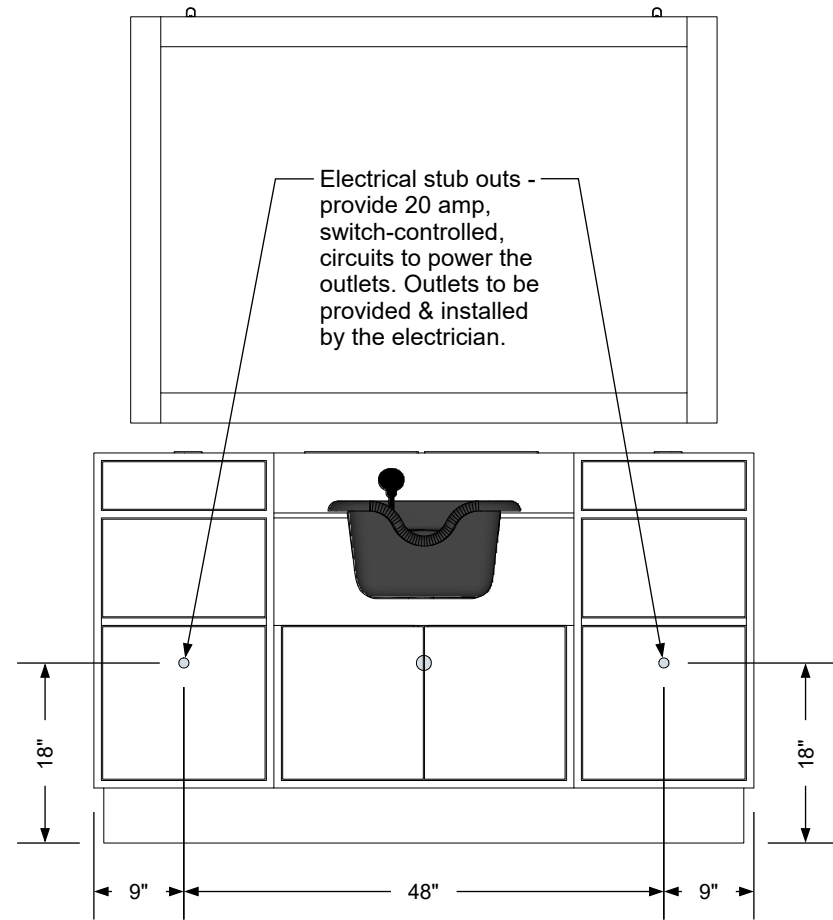
This **Specification Drawing** is intended for communicating the basic description, function, appearance, dimensions, features, and installation of an item as manufactured by Collins Manufacturing Company. Because this drawing does not contain project specific information such as quantities, finishes, or options, it is not an approval drawing and does not require a signature. This drawing remains the property of Collins Manufacturing Company and must not be used against the interests of Collins Manufacturing Company.

**collins** Collins Manufacturing  
 2000 Bowser Road  
 Cookeville, TN 38506

Title: <b>Edge 66 Barber Station</b>			
Size: <b>NTS</b>	Part Number: <b>6626-66</b>	Drawn By: <b>Eng</b>	
Prepared Date: <b>4/30/21</b>	Revision Date: <b>Date</b>	Revision Number: <b>Rev #</b>	Sheet: <b>1 of 3</b>



**Plumbing stub out detail**



**Electrical stub out detail**

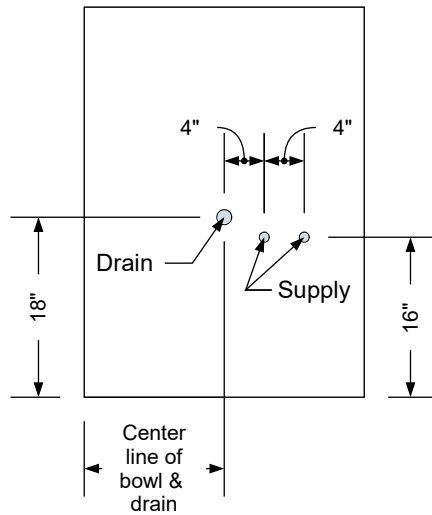
**Additional Information**

Assembly required - yes  
 Electrical required - yes  
 Plumbing required - yes  
 Wall blocking required - no  
 COM yardage/laminate usage - 96 sf  
 5 1/2"h laminated toe + 1/4"h glides  
 Other (specify) - n/a  
 Other (specify) - n/a

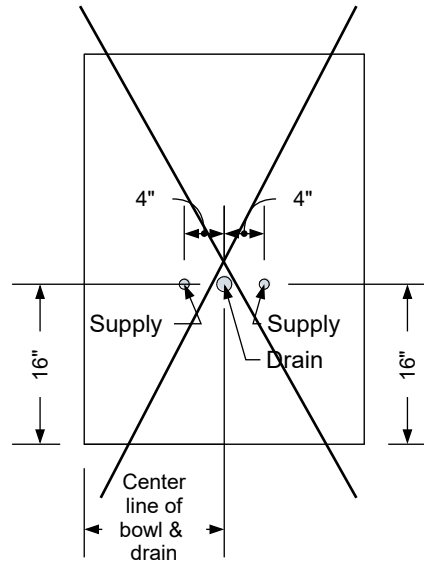
**Specification Drawing**

This **Specification Drawing** is intended for communicating the basic description, function, appearance, dimensions, features, and installation of an item as manufactured by Collins Manufacturing Company. Because this drawing does not contain project specific information such as quantities, finishes, or options, it is not an approval drawing and does not require a signature. This drawing remains the property of Collins Manufacturing Company and must not be used against the interests of Collins Manufacturing Company.

<b>collins</b>		Collins Manufacturing 2000 Bowser Road Cookeville, TN 38506	
Title: <b>Edge 66 Barber Station</b>			
Size: <b>NTS</b>	Part Number: <b>6626-66</b>	Drawn By: <b>Eng</b>	
Prepared Date: <b>4/30/21</b>	Revision Date: <b>Date</b>	Revision Number: <b>Rev #</b>	Sheet: <b>2 of 3</b>

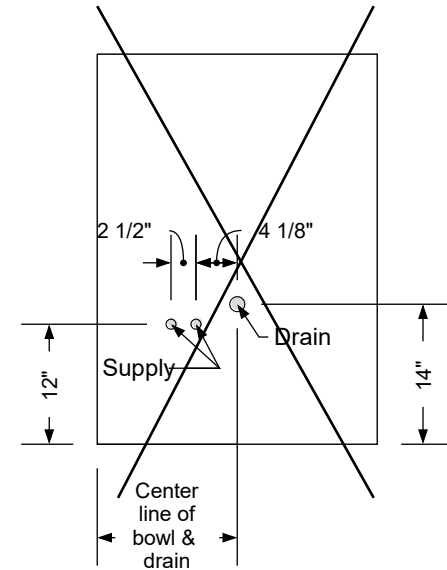


**Standard Shampoo Bowl**



**T100 w/ Tilting Shampoo Bowl**

Note: Lift Lid Must Be Reduced In Size To Use This Option.



**K100 Adjust-A-Sink Shampoo Bowl**

Note: Lift Lid Must Be Reduced In Size To Use This Option.

**Typical Collins Shampoo Bowl Options**

**Additional Information**

Assembly required - yes  
 Electrical required - yes  
 Plumbing required - yes  
 Wall blocking required - no  
 COM yardage/laminate usage - 96 sf  
 5 1/2" h laminated toe + 1/4" h glides  
 Other (specify) - n/a  
 Other (specify) - n/a

**Specification Drawing**

This **Specification Drawing** is intended for communicating the basic description, function, appearance, dimensions, features, and installation of an item as manufactured by Collins Manufacturing Company. Because this drawing does not contain project specific information such as quantities, finishes, or options, it is not an approval drawing and does not require a signature. This drawing remains the property of Collins Manufacturing Company and must not be used against the interests of Collins Manufacturing Company.

		Collins Manufacturing 2000 Bowser Road Cookeville, TN 38506	
Title: <b>Edge 66 Barber Station</b>			
Size: <b>NTS</b>	Part Number: <b>6626-66</b>	Drawn By: <b>Eng</b>	
Prepared Date: <b>4/30/21</b>	Revision Date: <b>Date</b>	Revision Number: <b>Rev #</b>	Sheet: <b>3 of 3</b>