



SOHO STYLING STATION

SKU:801-48

Inspired by the trendy neighborhood of Soho in New York City, this Soho Styling Station is designed after the cast-iron facades and original artwork found in the area.

The curved mirror panel and ledge fit perfectly with the cast-aluminum details, making this as unique as your salon.

TECHNICAL INFORMATION

- Measures: 48"W x 15"D x 93"H
- Cabinet w/ two drawers
- Fully-equipped tip-out tool panel
 - Blow dryer
 - 1" Curling iron
 - 2" Curling iron
 - Flat iron
 - Clippers
 - Power strip

SHIPPING INFORMATION

Item generally ships via Freight(Truck) service

- Weight: 111 lbs
- Dimensions: 48"L x 32"W x 66"H

WARRANTY

3 Years:

- Ball-Bearing Drawer Slides
- Cabinet hinges

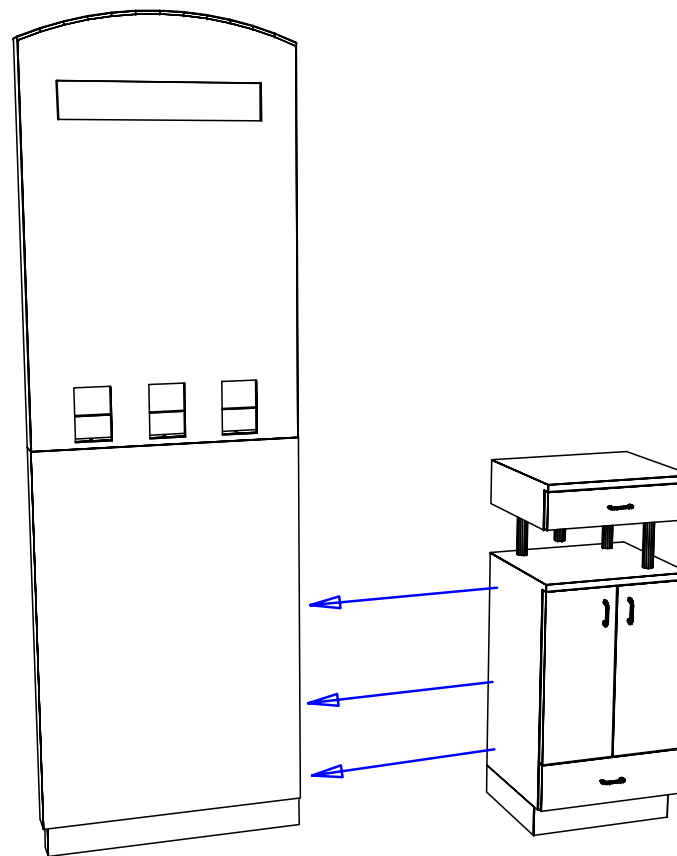
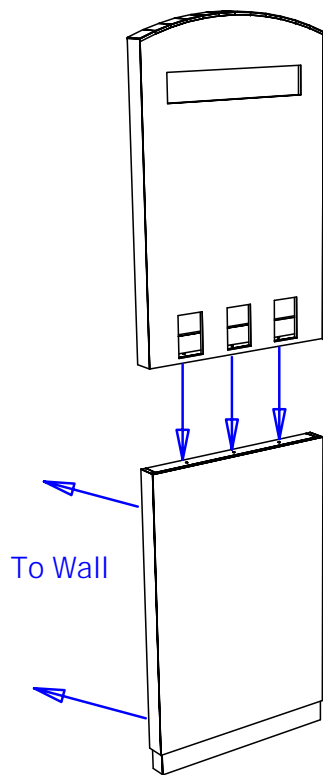
1 Year:

- All remaining components, unless noted otherwise, are guaranteed for a period of one year from the date of purchase.



Step 1: Remove french cleat from back of wall panel. Mount cleat to wall using the provided 3" wood screws, be sure to hit two wall studs. Then install wall panel onto french cleat.

Mount top mirror frame to wall panel with (3) 1 1/2" hex head bolts and washers by bolting through the pre-drilled holes in bottom of mirror frame into top of wall panel. Attach the top of frame to wall with 3" wood screws. Screw through the top cleat behind opening.



Step 2: Bolt through the pre-drilled holes on the interior of the Base cabinet into the lower wall. Use the provided 1 1/2" hex head bolts and washers. There are three bolts for each base cabinet.

Quantity -

Finish Schedule - 801-48

Face Color -
 Top Color -
 Toe Color -
 Reveal / Accent Color -
 Hardware -
 Interior -
 Other (Specify) -

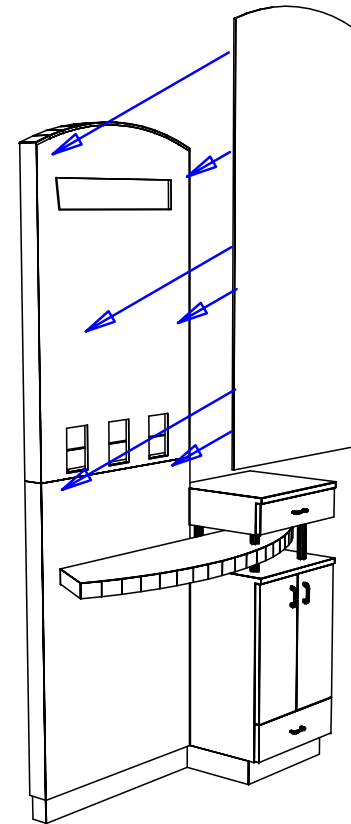
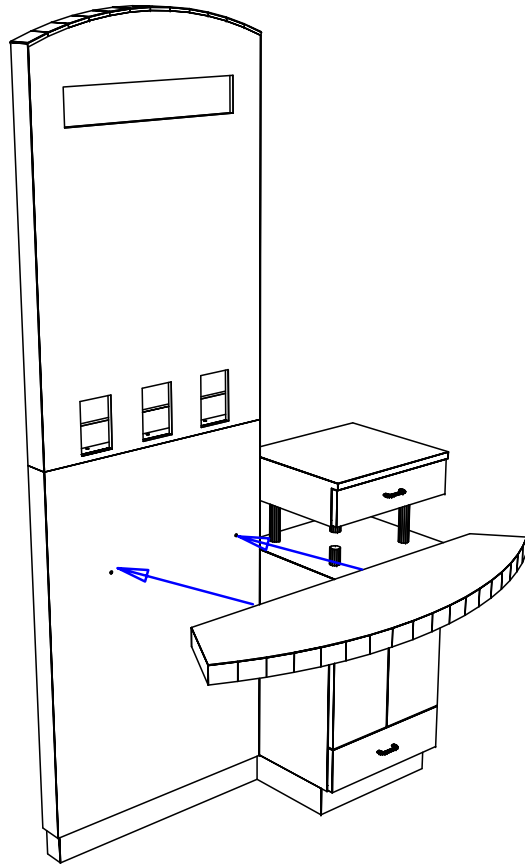
General Notes:

1. All counter tops are to be made removable wherever possible.
2. Items must be broken into manageable sections For Shipping. Mark For Ease Of Reassembly.
3. Install Shipping Cleats Wherever Possible To Prevent Shipping Damage.
4. Purchased items Must Be Trial Fit Before Shipping.

collins Collins Manufacturing
 2000 Bowser Road
 Cookeville, TN 38506

Title:		
Size:	Drawing Number: 801-48 Up & Out	Drawn By:
Date:	Sheet	

Step 3: Attach the ledge to the wall by bolting through the two pre-drilled holes in the ledge back into the wall with the 1 1/2" hex head bolts and washers. Do not tighten bolts at this point. With ledge bolts started, carefully insert the chrome tubing between the bottom of the ledge and the top of the lower cabinet. Secure tubing by bolting through top of lower cabinet into the tubing. Tighten Ledge bolts.



Step 4: Install mirrors by following the directions on the mirror clip boxes. Mirrors should be mounted in 2" from sides and 2" above ledge.


Quantity -

Finish Schedule - 801-48

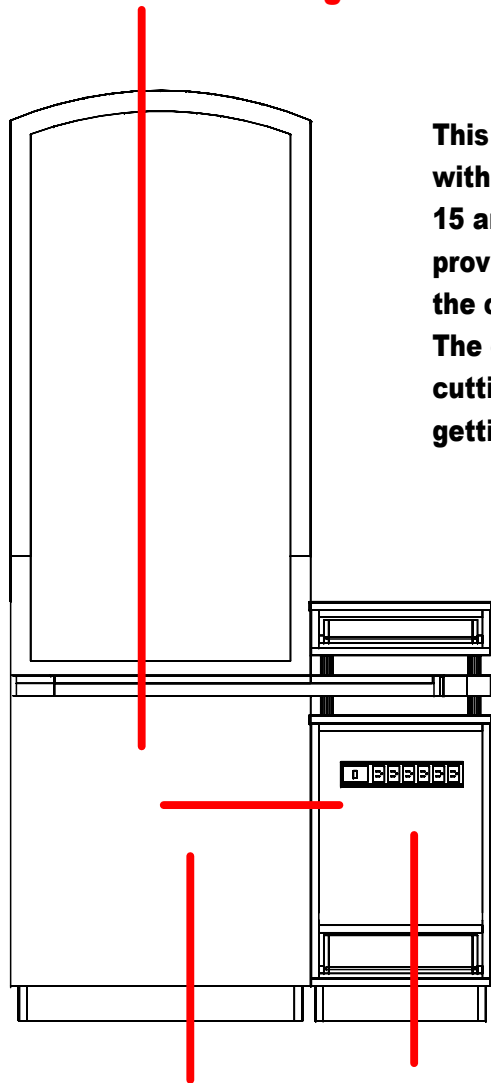
Face Color -
 Top Color -
 Toe Color -
 Reveal / Accent Color -
 Hardware -
 Interior -
 Other (Specify) -

General Notes:

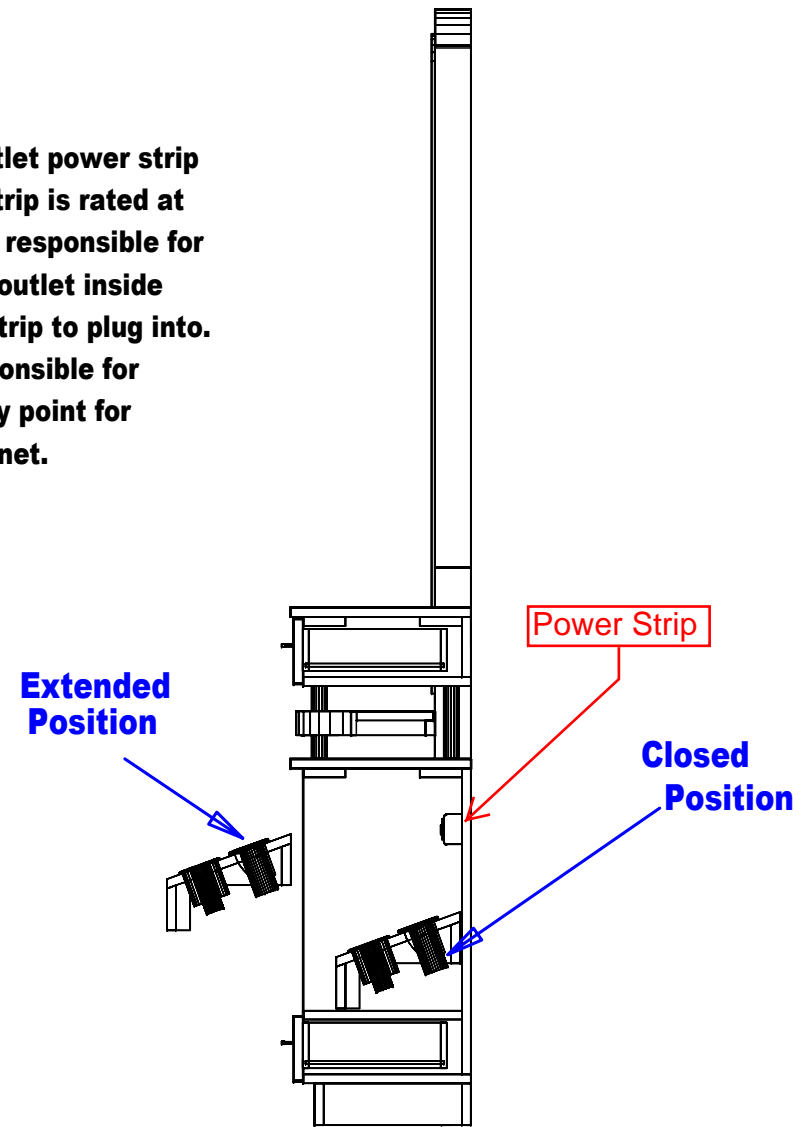
1. All counter tops are to be made removable wherever possible.
2. Items must be broken into manageable sections For Shipping. Mark For Ease Of Reassembly.
3. Install Shipping Cleats Wherever Possible To Prevent Shipping Damage.
4. Purchased items Must Be Trial Fit Before Shipping.

 Collins Manufacturing 2000 Bowser Road Cookeville, TN 38506			
			Title:
Size:	Drawing Number: 801-48 Up & Out	Drawn By:	
Date:	Sheet		

**Electric can be ran from the ceiling or floor
and through wall**



This item includes a six outlet power strip with a 4' cord. The outlet strip is rated at 15 amps. The electrician is responsible for providing and mounting an outlet inside the cabinet for the power strip to plug into. The electrician is also responsible for cutting an appropriate entry point for getting power into the cabinet.



Finish Schedule - 801-48
Face Color -
Top Color -
Toe Color -
Pulls -
Interior -
Other (Specify) -

This drawing is the property of Collins Manufacturing Company and is protected under copyright law.

collins		Collins Manufacturing 2000 Bowser Rd. Cookeville TN 38506	
Title: 801-48 Electrical			
Size:	#:	Drawn By: B	
Date:	12		Sheet #: