



AMATI MIRROR

SKU:933-30

Amati Mirror Assembly is the perfect companion to 936-15 Amati BC Portable or 937-15 Amati FS Styling Vanity.

TECHNICAL INFORMATION

- Measures: 30"W x 48"H
- Wall mounted
- Two 2" x 2" x 96" Amati steel poles
- Modesty panel
- 30" x 6" Ledge & support
- Inquire about special-order lengths of Amati-Steel, other than 96"

SHIPPING INFORMATION

Item generally ships via Freight(Truck) service

- Weight: 200 lbs
- Dimensions: 1 skid 1 box

WARRANTY

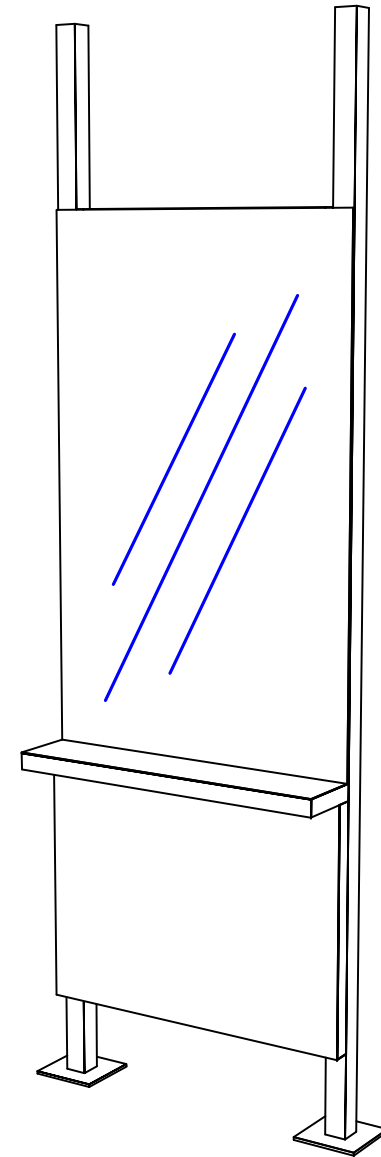
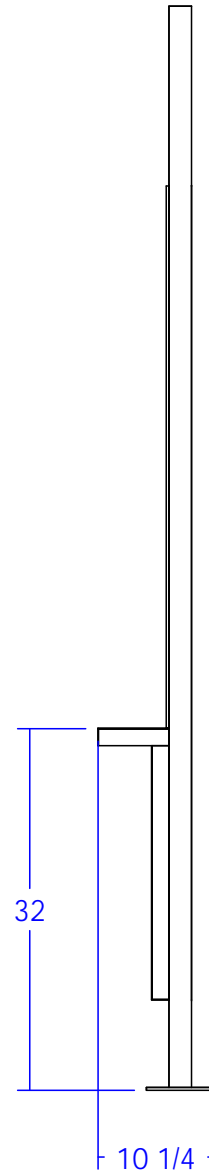
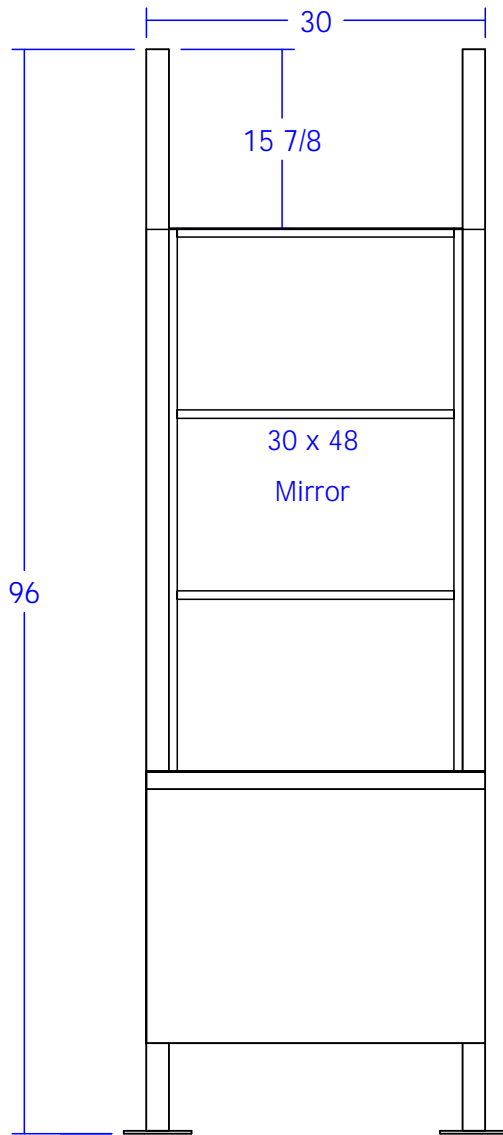
3 Years:

- Ball-Bearing Drawer Slides
- Cabinet hinges

1 Year:


- All remaining components, unless noted otherwise, are guaranteed for a period of one year from the date of purchase.





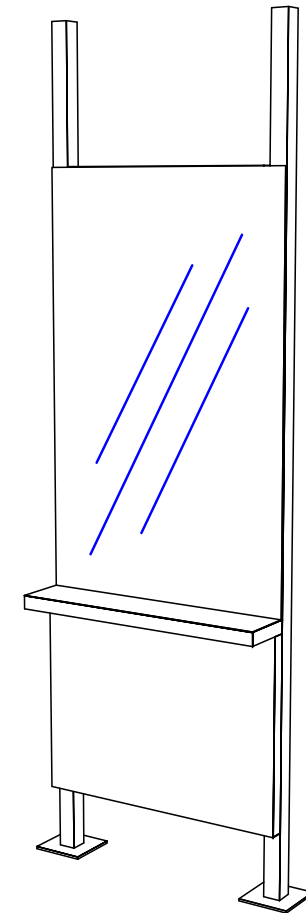
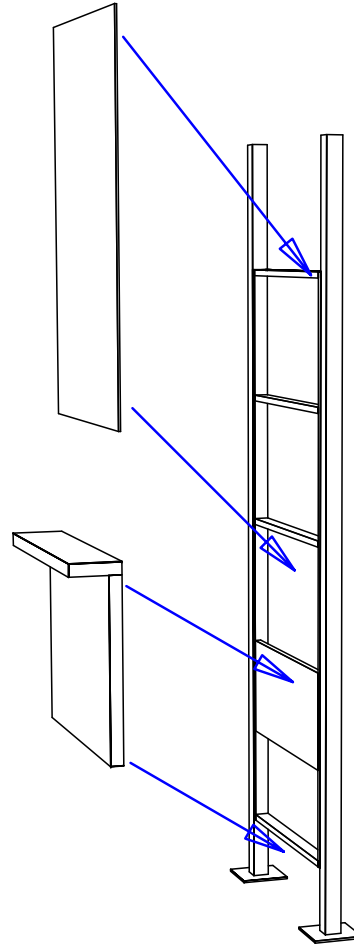
Finish Schedule - 933-30-1

Face Color - 1595-60 Black
 Top Color - 1573-60 White
 Toe Color - N/A
 Reveal / Accent Color -
 Hardware - N/A
 Interior - N/A
 Other (Specify) - Silver Steel

 Collins Manufacturing 2000 Bowser Road Cookeville, TN 38506		
Title: 933-30-1 Amati Mirror		
Size:	Drawing Number:	Drawn By:
Date: 11/19/07	Sheet	1 of 3

This unit must be bolted to the floor

This item is attached to the wall with a French cleat. Remove the wall component of the French cleat from the item and attach it to the wall with the fasteners provided. 3" wood screws are provided for wood framed walls. Fasteners for other wall types are to be obtained locally. The French cleat should be level and at the height required to mount the item at the desired height.



Finish Schedule - 933-30-1

Face Color - 1595-60 Black
Top Color - 1573-60 White
Toe Color - N/A
Reveal / Accent Color -
Hardware - N/A
Interior - N/A
Other (Specify) - Silver Steel

collins		Collins Manufacturing 2000 Bowser Road Cookeville, TN 38506
Title: 933-30 Assembly		
Size: NTS	Drawing Number: 71253	Drawn By: Brian
Date:	Sheet	