



## AMATI TALL STYLING ISLAND

SKU:941-66

With a contemporary industrial feel and Amati steel accents and supports, the stunning Amati Tall Styling Island is the perfect addition to your salon. Designed with two stylists in mind and a wide variety of storage options, this eye catching island is certain to set you apart from the rest.

### TECHNICAL INFORMATION

---

- Measures: 66"W x 15"D x 80"H
- 3 Drawer
- Upper storage cabinet w/ shelf
- Lower storage cabinet w/ shelf
- Fully equipped tip-out tool panel
  - Power strip
- 30" x 48" Mirror

### SHIPPING INFORMATION

---

Item generally ships via Freight(Truck) service

- Weight: 631 lbs
- Dimensions: 3 SKIDS

### WARRANTY

---

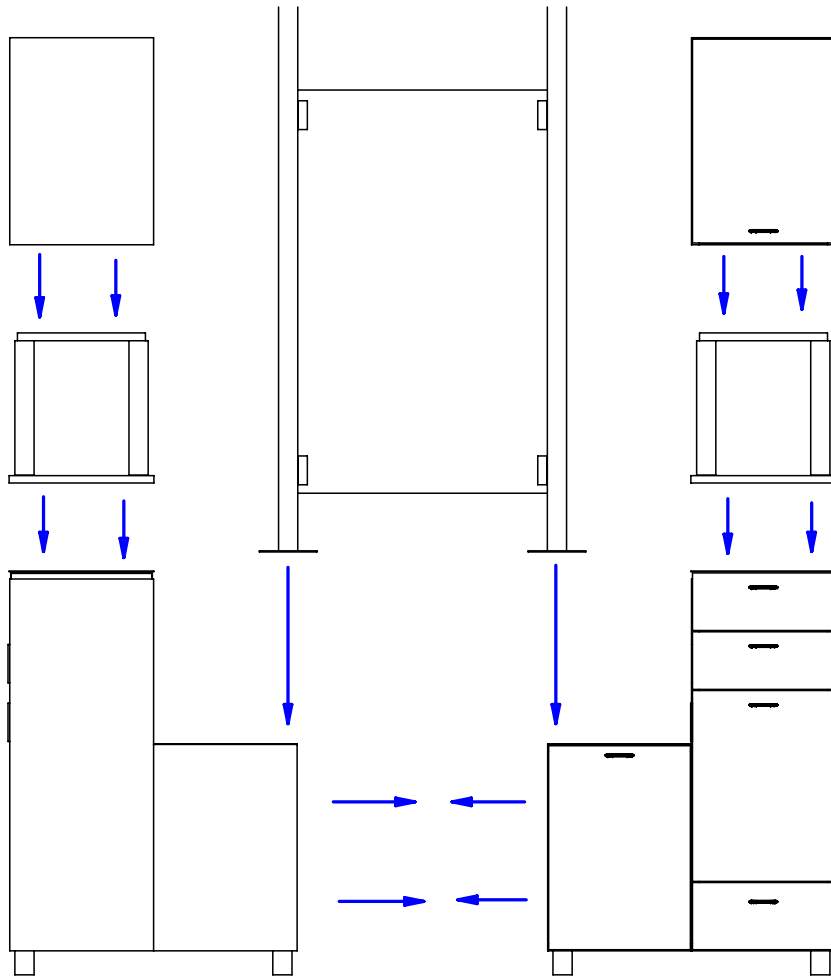
#### 3 Years:

- Ball-Bearing Drawer Slides
- Cabinet hinges

#### 1 Year:

- All remaining components, unless noted otherwise, are guaranteed for a period of one year from the date of purchase.





To assemble the Amati Island follow this procedure.

- 1) Place the spacer assemblies on top of the lower cabinet assemblies and use the provided connector bolts to pass through the (4) predrilled holes in the sub top of the lower cabinet into the threaded inserts in the spacer. Tighten with the provided allen wrench.
- 2) Place the upper cabinets on top of the spacer assemblies. Use the provided connector bolts to pass through the (2) predrilled holes in the sub deck of the upper cabinet into the threaded inserts in the spacer. Tighten with the provided allen wrench.
- 3) Assemble the mirror frame by passing the supplied screws into the pre-drilled/tapped holes in the metal. You may wish to cut the side pieces of the mirror frame down to accomodate your ceiling type.
- 4) Place both sides of the island in their final position. Leave a 6 1/16" gap between them. Lower the mirror frame assembly on top of the short base cabinets. Line up the cooresponding holes and secure with the supplied bolts.
- 5) With the cabinets and mirror frame installed, locate the supplied mirror clips and attach to pre drilled holes in the mirror frame. Install mirror by first seating into the bottom clips then lifting the upper clips to seat the top of the mirror.


Quantity -

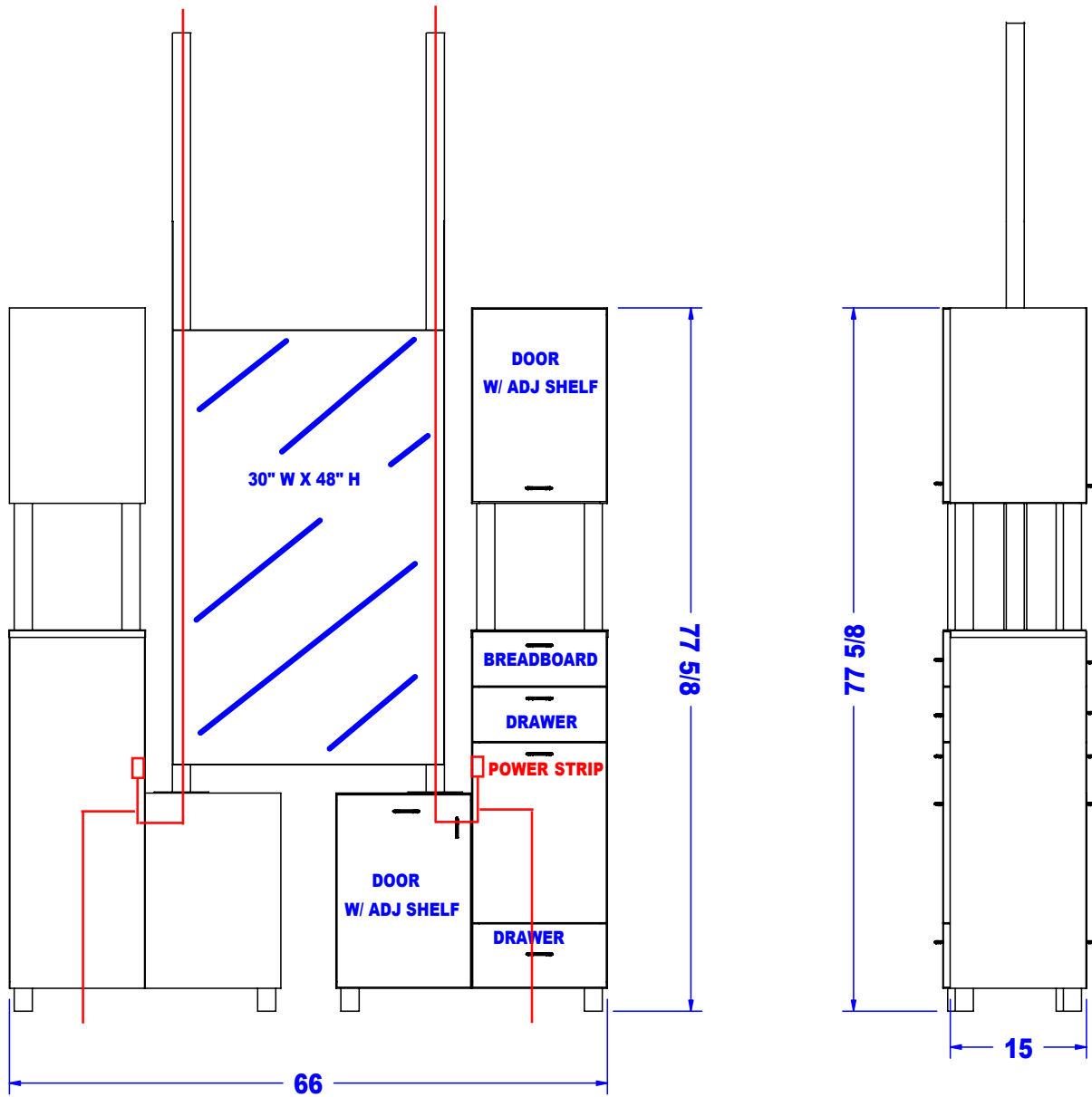
Finish Schedule - 940-48-1

Face Color -  
 Top Color -  
 Toe Color - Sliver Legs  
 Reveal / Accent Color -  
 Hardware - Amati Pulls  
 Interior - Black Melamine  
 Other (Specify) -

General Notes:

1. All counter tops are to be made removable wherever possible.
2. Items must be broken into managable sections For Shipping. Mark For Ease Of Reassembly.
3. Install Shipping Cleats Wherever Possible To Prevent Shipping Damage.
4. Purchased items Must Be Trial Fit Before Shipping.

		Collins Manufacturing	
		2000 Bowser Road Cookeville, TN 38506	
Title:			
Size: NTS	Drawing Number: Job	Drawn By:	
Date: 10/11/07	Sheet		3 of 7



Preliminary  
Not For Construction

This drawing is the property of Collins Manufacturing Company and is protected under copyright law.

**Quantity -**

**Finish Schedule - 941-66-1**

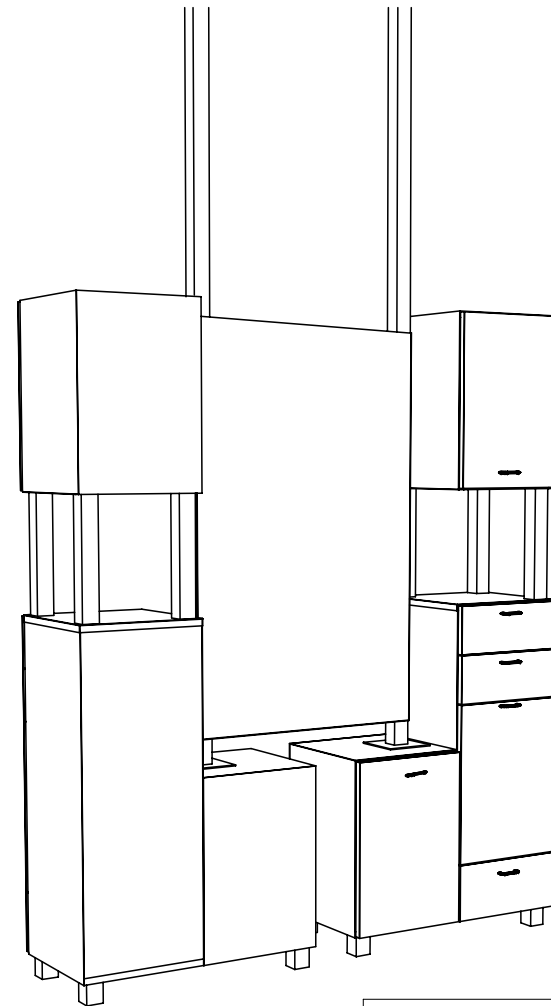
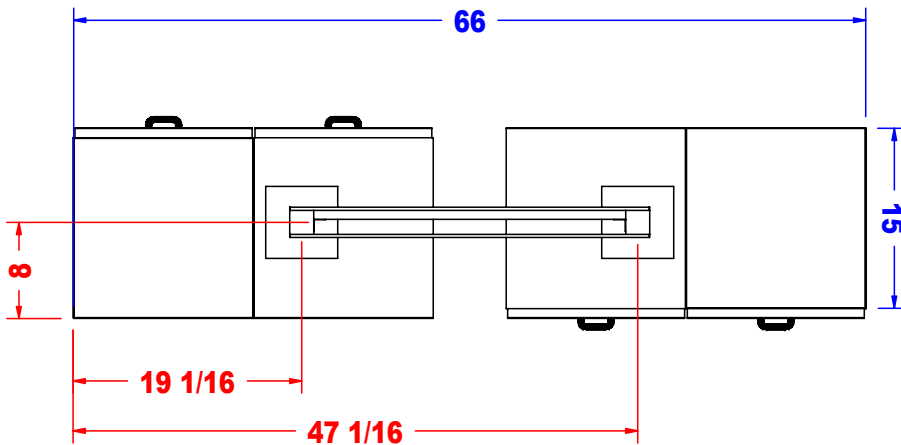
Face Color -  
 Top Color -  
 Toe Color - NA  
 Reveal / Accent Color - SILVER METAL  
 Hardware -  
 Interior - Black Melamine  
 Other (Specify) -

This drawing represents Collins Manufacturing Company's understanding of the desired item as was previously priced & ordered. Your signature indicates you have reviewed the drawing; and your approval will authorize Collins to initiate the acquisition of materials & subsequent production. More than modest changes may affect the price and/or manufacturing lead time.

- Approved as drawn.
- Approved w/ changes noted.
- Not approved - re-submit.

Signature \_\_\_\_\_  
 Company \_\_\_\_\_ Date \_\_\_\_\_

<b>Collins Manufacturing</b> 2000 Bowser Road Cookeville, TN 38506		
Title:		
Size: <b>NTS</b>	Drawing Number:	Drawn By: <b>Zane</b>
Date: <b>09/21/07</b>	Sheet	<b>8 of 9</b>



Preliminary  
Not For Construction

This drawing is the property of Collins Manufacturing Company and is protected under copyright law.

**Quantity -**

**Finish Schedule - 941-66-1**

Face Color -  
Top Color -  
Toe Color - NA  
Reveal / Accent Color - SILVER METAL  
Hardware -  
Interior - Black Melamine  
Other (Specify) -

This drawing represents Collins Manufacturing Company's understanding of the desired item as was previously priced & ordered. Your signature indicates you have reviewed the drawing; and your approval will authorize Collins to initiate the acquisition of materials & subsequent production. More than modest changes may affect the price and/or manufacturing lead time.

- Approved as drawn.
- Approved w/ changes noted.
- Not approved - re-submit.

Signature \_\_\_\_\_  
Company \_\_\_\_\_ Date \_\_\_\_\_

**collins** Collins Manufacturing  
2000 Bowser Road  
Cookeville, TN 38506

Title:		
Size: <b>NTS</b>	Drawing Number:	Drawn By: <b>Zane</b>
Date: <b>09/21/07</b>	Sheet	<b>9 of 9</b>