



BRADFORD RETAIL DISPLAY

SKU:911-30

With the Bradford Free-Standing Retail Display you can showcase your retail in style.

Create a classic and stylish accent in your salon or spa with crown molding details that enrich the space by forming an eye-catching transition between the walls and ceiling. The Queen Anne legs detail make this a timeless piece that will not go out of style. This traditional style can fit into any decor with just the change of the laminate color.

TECHNICAL INFORMATION

- Measures: 30"W x 24"D x 84"H
- 3 Adjustable glass shelves
- Light
- Crown & accent molding
- 4 Queen Anne legs

SHIPPING INFORMATION

Item generally ships via Freight(Truck) service

- Weight: 250 lbs
- Dimensions: 48"L x 32"W x 94"H

WARRANTY

7.5 Years:

- Models 3500, 4500, 5550 Foot Operated Hydraulic Pumps

5 years:

- Collins Comfort Zone anti-fatigue mats
- Collins all purpose and shampoo chair back reclining mechanisms
- Models 3250, 4250, 5250 Foot Operated Hydraulic Pumps

3 Years:

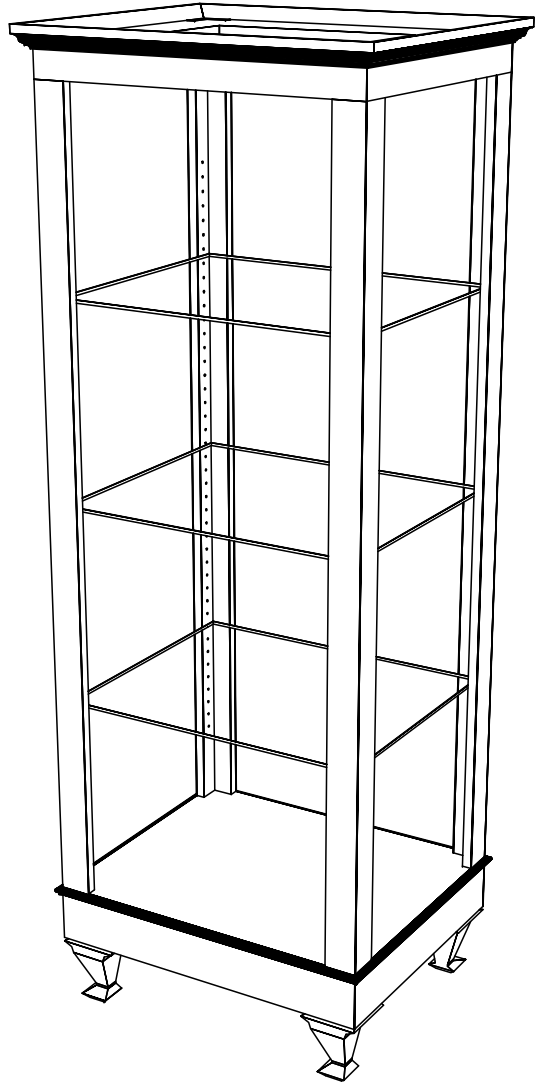
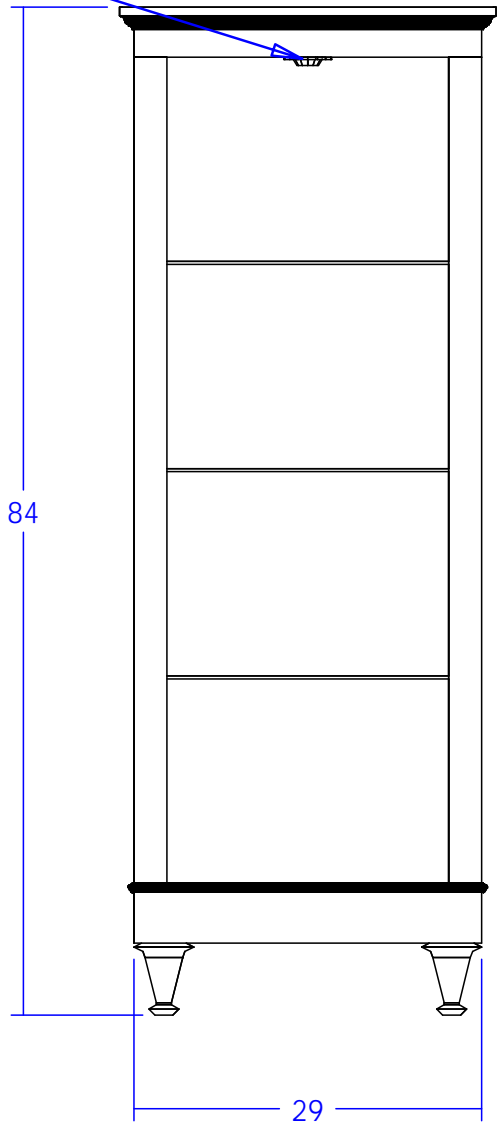
- BKB Electric Base

1 year:

- All remaining components, unless otherwise noted



Eyeball Light



Eyeball light fixtures are provided with a 2' cord. The electrician is responsible for providing an outlet for the light fixture to plug into. Bulbs are 25w - reflector type.

All electrical work is to be performed by a licensed electrical contractor and to be performed in accordance with all applicable national, state, and local codes.


Quantity -

Finish Schedule - 911-30-1

Face Color -
Top Color -
Toe Color -
Reveal / Accent Color -
Hardware -
Interior -
Other (Specify) -

General Notes:

1. All counter tops are to be made removable wherever possible.
2. Items must be broken into manageable sections For Shipping. Mark For Ease Of Reassembly.
3. Install Shipping Cleats Wherever Possible To Prevent Shipping Damage.
4. Purchased items Must Be Trial Fit Before Shipping.

 Collins Manufacturing 2000 Bowser Road Cookeville, TN 38506		
Title:		
Size: NTS	Drawing Number: Job	Drawn By:
Date: 12/05/07	Sheet 5 of 5	