



## AMATI AMICO DESK

SKU:930-60



The Amati Amico Desk is a solid, durable and functional piece that will make a stunning first impression for your customers. Available in two finishes, the Amati Desk features full-depth drawers, a built-in laptop platform, cable management system and other integrated design elements that make this desk functional and stylish.

### TECHNICAL INFORMATION

- Measures: 60"W x 26"D x 44"H
- Locking drawer w/ cash till
- Utility drawer
- Storage cabinets w/ adjustable shelves
- Recess for electronic cash drawer
- Can accommodate keyboard tray, specify at time of order
- Amati steel legs & accents
- Steel supported customer ledge
- Steel supported accent panel

### SHIPPING INFORMATION

Item generally ships via Freight(Truck) service

- Weight: 340 lbs
- Dimensions: 66"L x 32"W x 50"H

### WARRANTY

#### 3 Years:

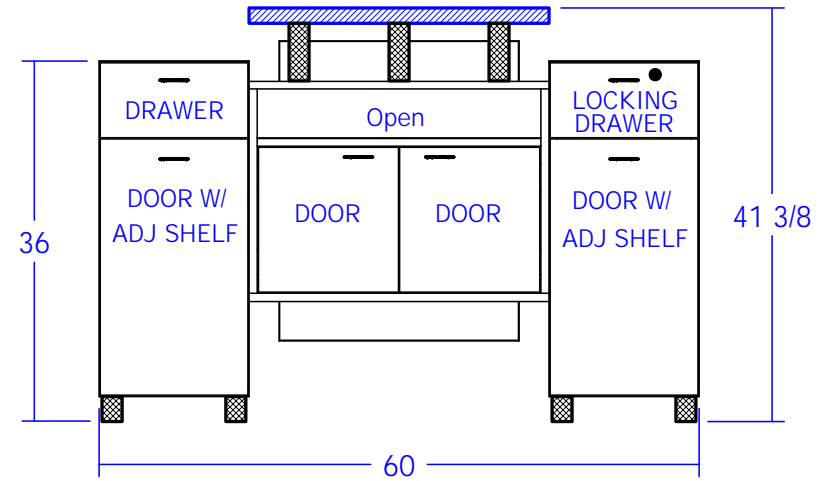
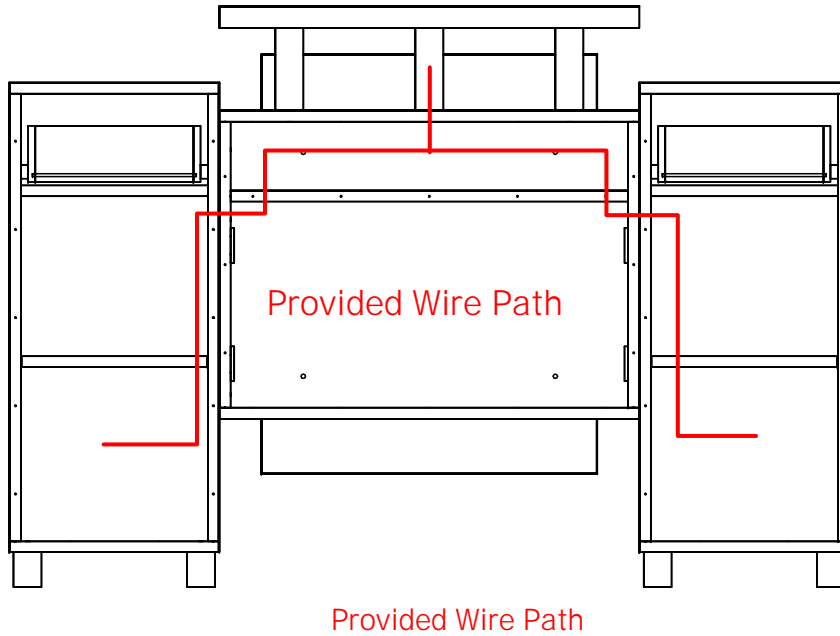
- Ball-Bearing Drawer Slides
- Cabinet hinges

#### 1 Year:

- All remaining components, unless noted otherwise, are guaranteed for a period of one year from the date of purchase.



All electrical work is to be performed by a licensed electrical contractor and to be performed in accordance with all applicable national, state, and local codes.



This cabinet is shipped fully assembled. No further assembly or installation is required.


Quantity -

Finish Schedule - 930-60-1

Face Color -  
 Top Color -  
 Toe Color -  
 Reveal / Accent Color -  
 Hardware -  
 Interior -  
 Other (Specify) -

General Notes:

1. All counter tops are to be made removable wherever possible.
2. Items must be broken into manageable sections For Shipping. Mark For Ease Of Reassembly.
3. Install Shipping Cleats Wherever Possible To Prevent Shipping Damage.
4. Purchased items Must Be Trial Fit Before Shipping.

 Collins Manufacturing 2000 Bowser Road Cookeville, TN 38506		Title:	
		Size: NTS	Drawing Number:
Date: 03/20/08		Sheet 8 of 8	