



## COLOUR PRO COLOR CENTER 101

SKU:851-101

Our Colour Pro Color Center has everything you need to mix, store, and organize colors. It features generous storage options to hold brushes and bowls, and cubby's for storing color. A stainless steel top provides a smooth easy to clean work surface.

### TECHNICAL INFORMATION

- Measures: 101"W x 24"D x 90"H
- Acrylic cubbies
- Stainless steel work-surface
- Backsplash
- 4 Large drawers
- Stainless steel sink
- Storage cabinets w/ adjustable shelves
- When Signage option is chosen - Client applies their own logo, templates, & decals on site

### SHIPPING INFORMATION

Item generally ships via Freight(Truck) service

- Weight: 1230 lbs
- Dimensions: 4 skids

### WARRANTY

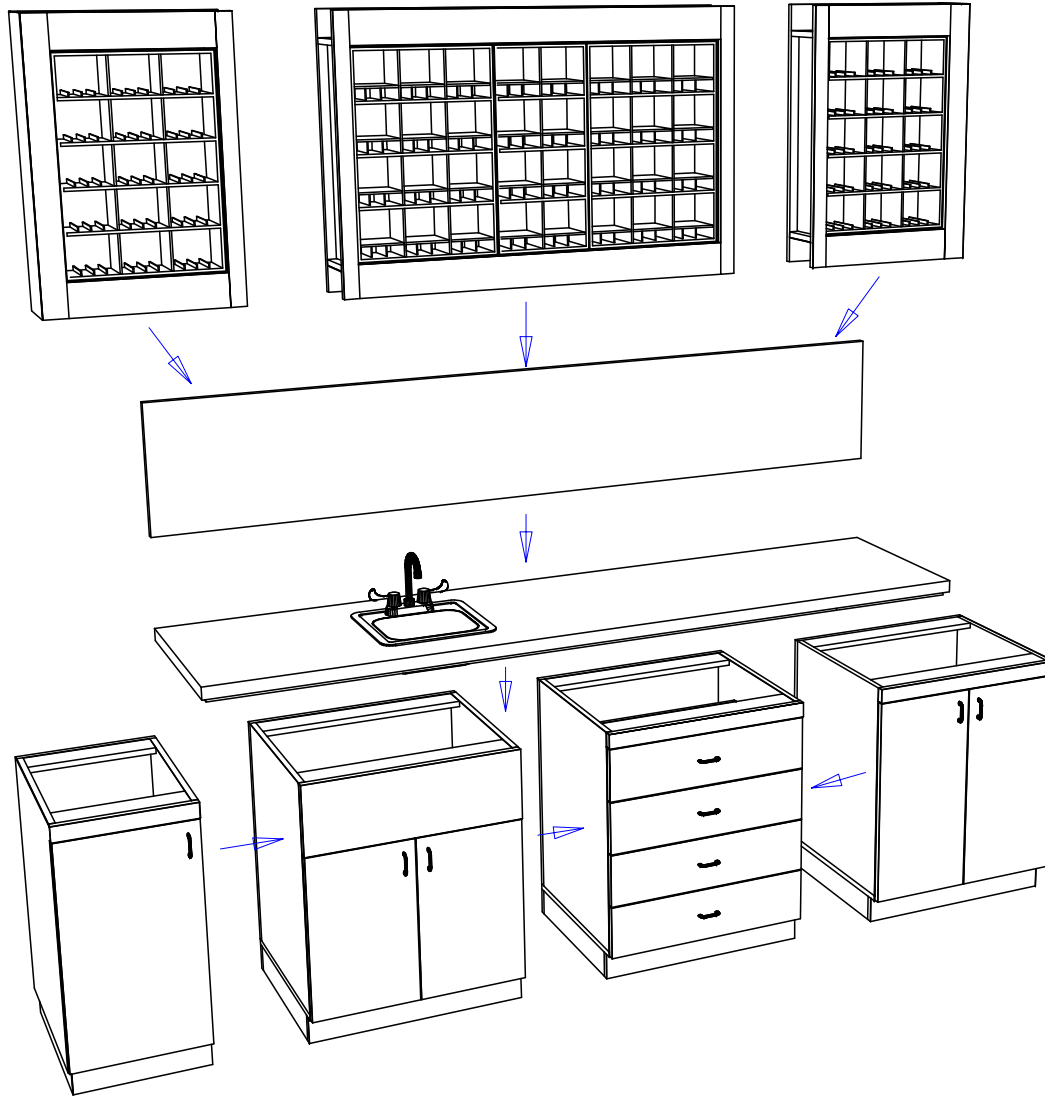
#### 3 Years:

- Ball-Bearing Drawer Slides
- Cabinet hinges

#### 1 Year:

- All remaining components, unless noted otherwise, are guaranteed for a period of one year from the date of purchase.





Attach adjacent cabinets by fastening through the pre-drilled holes with the provided connector bolts and matching connector nut.

This item is attached to the wall with wood screws. 3" wood screws and decorative washers are provided for wood framed walls. Fasteners for other wall types are to be obtained locally. Screw through the back panel in locations which will be inconspicuous after installation. Suggested locations include: under shelves, behind drawers, and locations hidden by products or supplies.

Back splash is to be attached to the wall with screws and/or construction adhesive depending upon the wall type and finish. If screws are used, locate them in inconspicuous locations if possible. Seal any joints between the counter top, splash, and wall with clear silicone.

Counter top joints and seams in proximity of sinks, shampoo bowls, or pedicure basins are to be sealed on-site with clear silicone caulk to prevent water intrusion and damage.

All plumbing work is to be performed by a licensed plumbing contractor and to be performed in accordance with all applicable state and local codes.


#### Quantity -

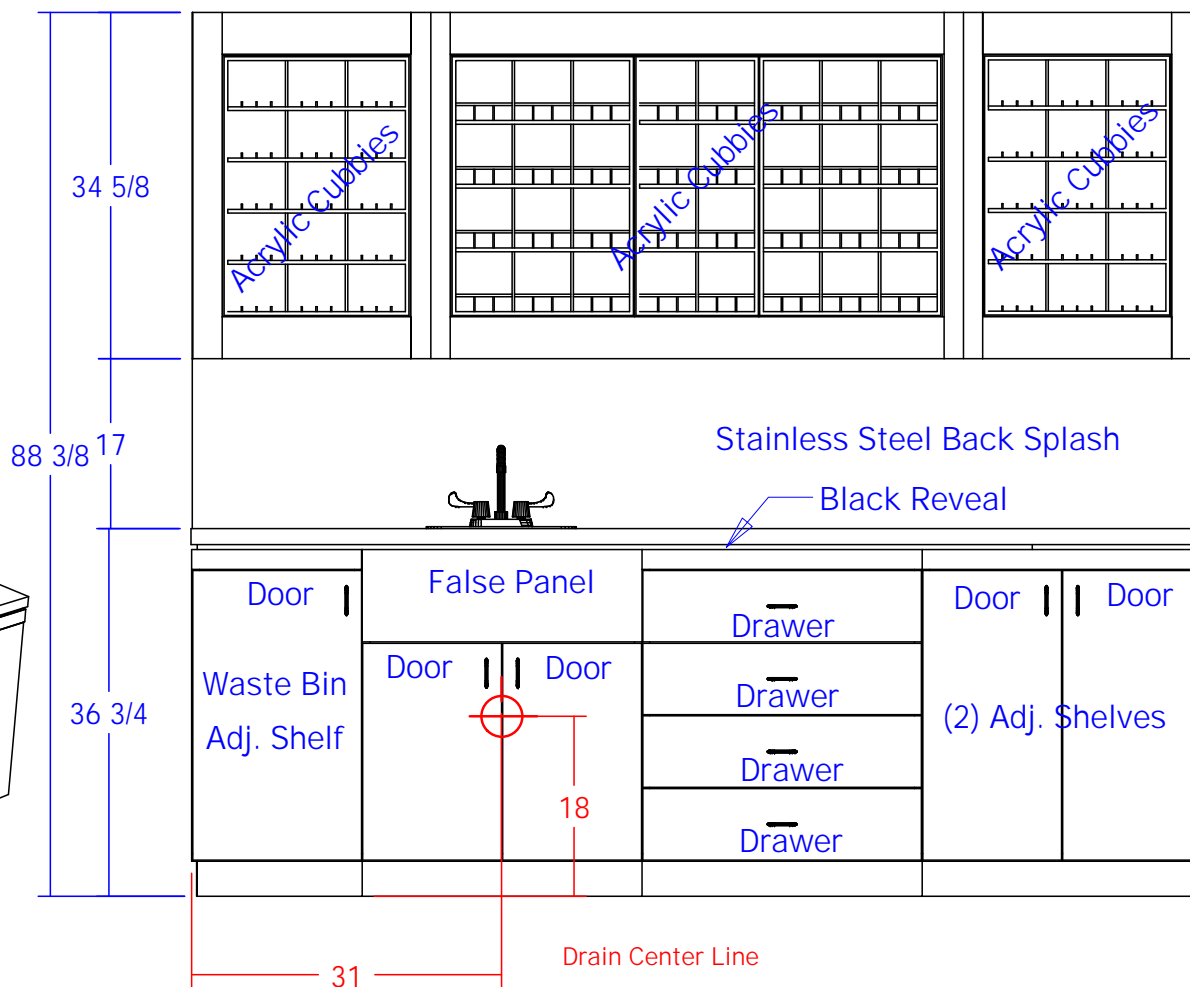
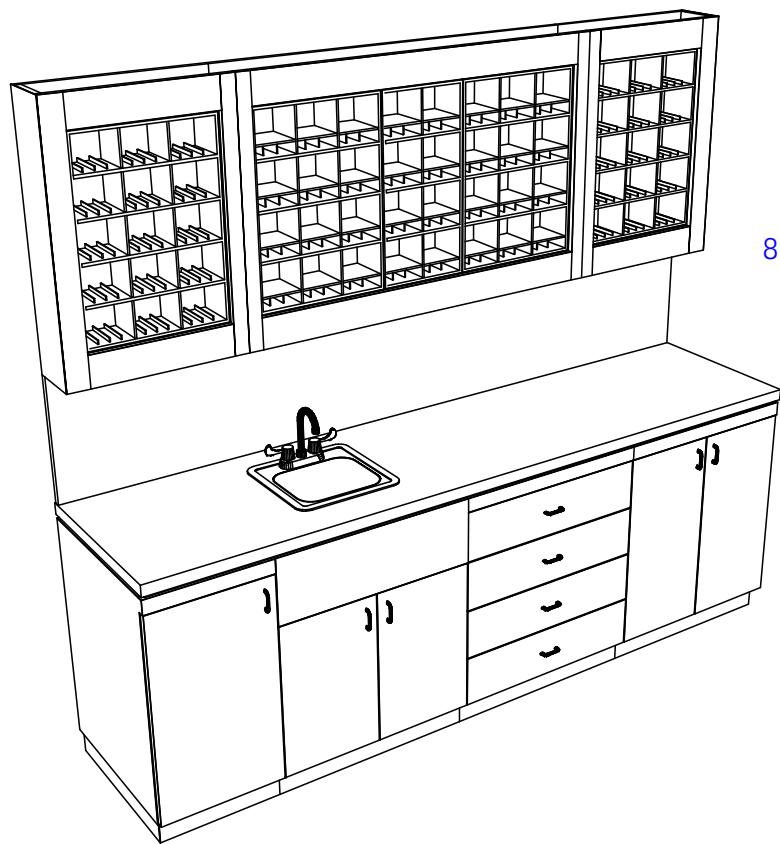
Finish Schedule - 851-101-1

Face Color -  
Top Color -  
Toe Color -  
Reveal / Accent Color -  
Hardware -  
Interior -  
Other (Specify) -

#### General Notes:

1. All counter tops are to be made removable wherever possible.
2. Items must be broken into manageable sections For Shipping. Mark For Ease Of Reassembly.
3. Install Shipping Cleats Wherever Possible To Prevent Shipping Damage.
4. Purchased items Must Be Trial Fit Before Shipping.

|   |                 |  |                |
|---|-----------------|--|----------------|
|  Collins Manufacturing<br>2000 Bowser Road<br>Cookeville, TN 38506 |                 |  |                |
|   |                 |  | Title:         |
| Size:   | Drawing Number: |  | Drawn By:      |
|   | NTS             |  |                |
| Date:   | 12/04/07        |  | Sheet 13 of 14 |



## Quantity -

Finish Schedule - 851-101-1

Face Color -  
Top Color -  
Toe Color -  
Reveal / Accent Color -  
Hardware -  
Interior -  
Other (Specify) -

## General Notes:

1. All counter tops are to be made removable wherever possible.
2. Items must be broken into manageable sections For Shipping. Mark For Ease Of Reassembly.
3. Install Shipping Cleats Wherever Possible To Prevent Shipping Damage.
4. Purchased items Must Be Trial Fit Before Shipping.

**collins**

Collins Manufacturing  
2000 Bowser Road  
Cookeville, TN 38506

Title:

Size: NTS

Drawing Number:

Drawn By:

Date: 12/04/07

Sheet

14 of 14