



BRADFORD TOWER STORAGE CABINET

SKU:897-16

Bradford Tower-Style Shampoo Cabinet w/ crown molding.

The **THREE BOWL** Bradford Backwash System is pictured. To complete this look, order 3 Bradford Backwash Shampoo Cabinets and 2 Bradford Tower-Style Shampoo Towers. View the Shampoo Cabinet Towers [HERE](#)

TECHNICAL INFORMATION

- Measures: 16"W x 16"D x 90"H each, 2 pictured
- Access door
- Clean towel storage
- Easy-access on back
 - Shampoo
 - Conditioner
 - Towel

SHIPPING INFORMATION

Item generally ships via Freight(Truck) service

- Weight: 245 lbs
- Dimensions: 30"L x 32"W x 96"H

WARRANTY

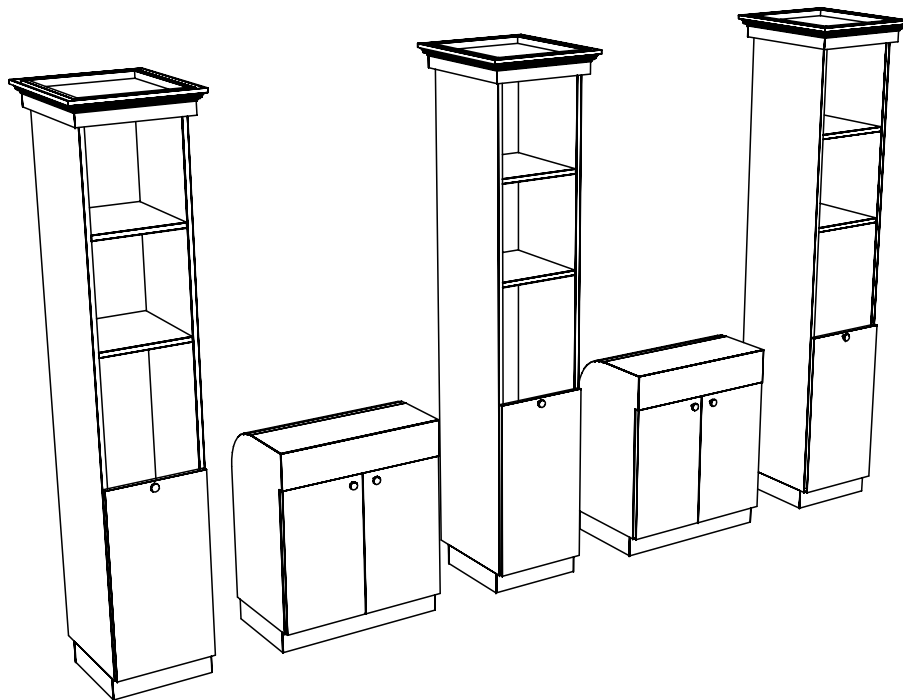
3 Years:

- Ball-Bearing Drawer Slides
- Cabinet hinges

1 Year:

- All remaining components, unless noted otherwise, are guaranteed for a period of one year from the date of purchase.





Adjacent cabinets and components should be assembled by fastening through the interior panels with the screws or bolts provided. Tighten securely.

Cabinets are marked for ease of assembly. Match up like markings for both vertical and horizontal sections. Markings will be on the backs or other surfaces that are inconspicuous after installation.

Quantity - 3

Finish Schedule - 897-16-1

Face Color - Limber Maple
 Top Color - Limber Maple
 Toe Color - Black
 Pulls - Chrome Knobs
 Interior - White Melamine
 Other (Specify) -

Installation Notes:

1. All hardware needed for assembly is included.
2. Large items are preassembled at the factory to ensure proper alignment. Items are then disassembled into manageable sections for shipping purposes and ease of reassembly.
3. Shipping cleats need to be removed before installation. These cleats are installed to prevent damage.

collins		Collins Manufacturing 2000 Bowser Rd. Cookeville TN 38506	
Title: Buy Rite Beauty Equipment			
Size:	#: 53700c - 5	Drawn By: Mike	
Date:	09/15/04	Sheet #: 5	