



PRIVATE ROOM GRANDE

SKU:927-48

The Private Room Grande Vanity features lots of storage space.

TECHNICAL INFORMATION

- Measures: 48"W x 21"D x 90"H
- Lockers
- Stainless steel sink
- Paddle fixtures
- Drawer
- Cabinet storage
- Open shelves
- Can be made right or left handed

SHIPPING INFORMATION

Item generally ships via Freight(Truck) service

- Weight: 546 lbs
- Dimensions: 2 skids

WARRANTY

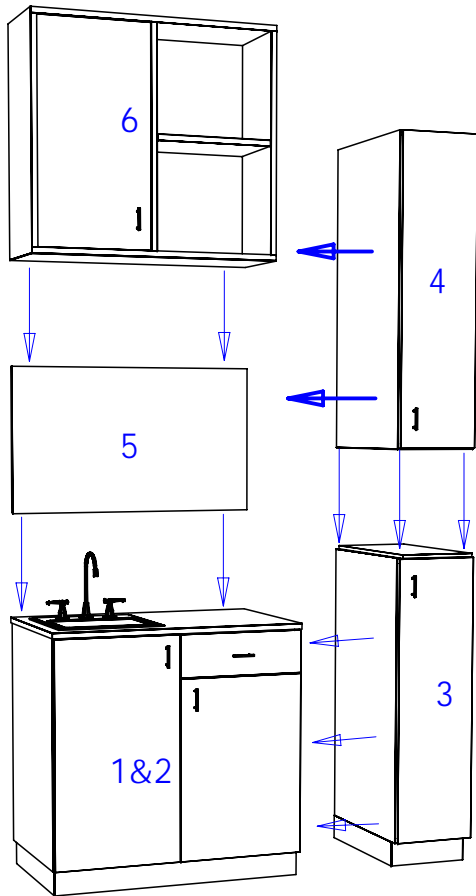
3 Years:

- Ball-Bearing Drawer Slides
- Cabinet hinges

1 Year:

- All remaining components, unless noted otherwise, are guaranteed for a period of one year from the date of purchase.





STEP 1. Cut hole in base cabinet for plumbing.

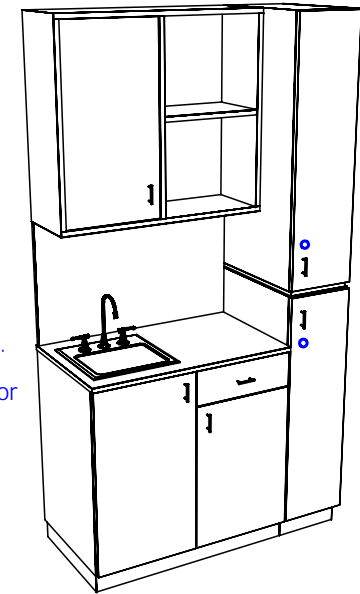
STEP 2. Remove drawer (see diagram 8), and set base cabinet in place against wall. Mount cabinet to wall using (4) 3" wood screws with beauty washers through interior back panel into wall studs (see diagram 9).

STEP 3. Set lower tower cabinet against base cabinet and wall. Bolt cabinets together with (4) 1 1/4" beauty bolts. Then mount tower cabinet to wall using (2) 3" wood screws with beauty washers through interior back panel into wall studs.

STEP 4. Set upper tower cabinet on top of lower, and align. Fasten them together using (4) 1 1/2" wood screws with beauty washers up through interior top of lower cabinet into bottom of upper tower cabinet.

STEP 5. Mount the backsplash. Apply liquid nail or a construction adhesive to back. Set backsplash on top of base cabinet and butt against tower cabinets, then press against wall. Apply a bead of silicone in the seams to prevent water damage.

STEP 6. Set upper cabinet in place against top of backsplash and tower cabinets. Bolt cabinet to upper tower cabinet with (4) 1 1/4" beauty bolts through side panels. Mount cabinet to wall using (4) 3" wood screws with beauty washers through interior of cabinet into wall studs.



Quantity - QTY

Finish Schedule - 927-48-1

Face Color - Face Color
 Top Color - Top Color
 Toe Color - (Specify)
 Pulls - Hardware
 Interior - White Melamine
 Other (Specify) -

Installation Notes:

1. All hardware needed for assembly is included.
2. Large items are preassembled at the factory to ensure proper alignment. Items are then disassembled into manageable sections for shipping purposes and ease of reassembly.
3. Shipping cleats need to be removed before installation. These cleats are installed to prevent damage.

collins

Collins Manufacturing
 2000 Bowser Rd.
 Cookeville TN 38506

Title: CustName

Size:

SoNbr

Drawn By:
 Engr

Date: 09/28/06

Sheet #: 8