



## FLOATING SHELF

SKU:2003-36



Modern yet minimalistic, this elegant Floating Display Shelf is perfect for retail spaces. Its unique design creates maximum visibility without taking up a lot of space, leaving room for you to showcase your products.

4 shelves, wall, and lower box included.

2 units are pictured side by side.

### TECHNICAL INFORMATION

Each section features:

- 36"W x 14"D x 84"H
- Four floating shelves and contrasting colors
- Can also be ordered with base cabinet storage, p/n 2004-36

### SHIPPING INFORMATION

Item generally ships via Freight(Truck) service

- Weight: 220 lbs
- Dimensions: 48"L x 32"W x 92"H

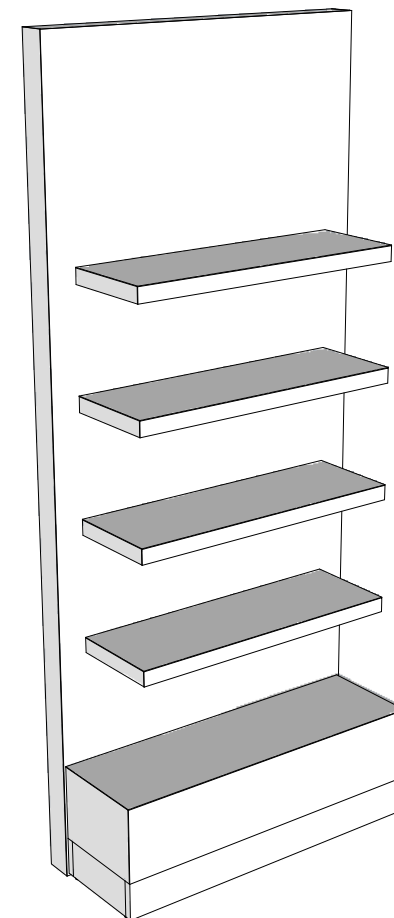
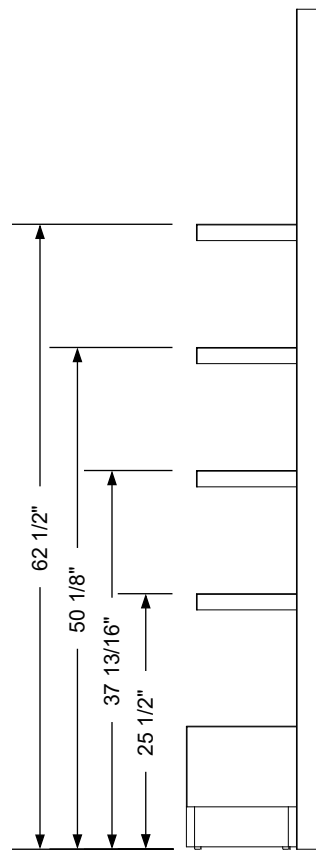
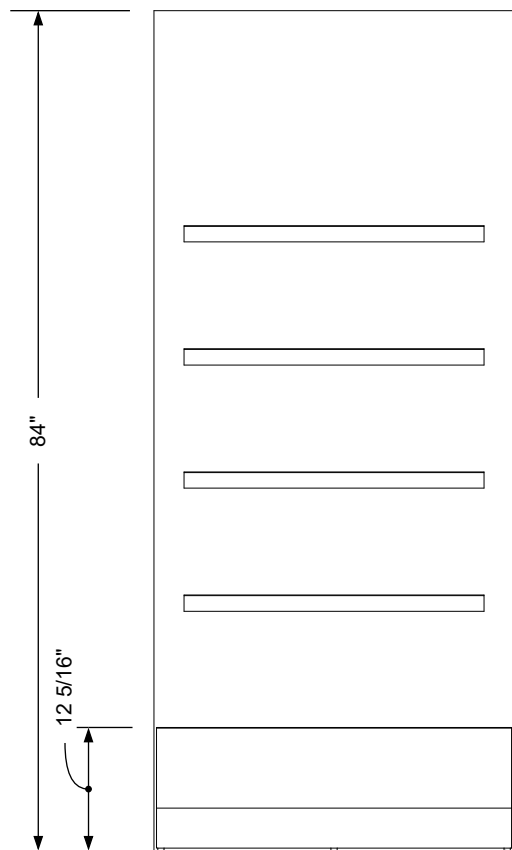
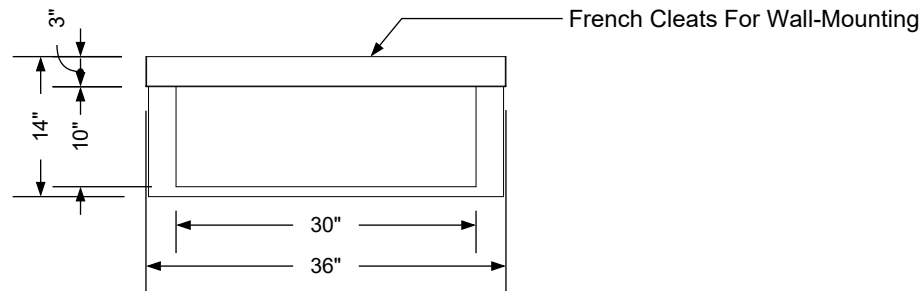
### WARRANTY

#### 3 Years:

- Ball-Bearing Drawer Slides
- Cabinet hinges

#### 1 Year:

- All remaining components, unless noted otherwise, are guaranteed for a period of one year from the date of purchase.




### Additional Information

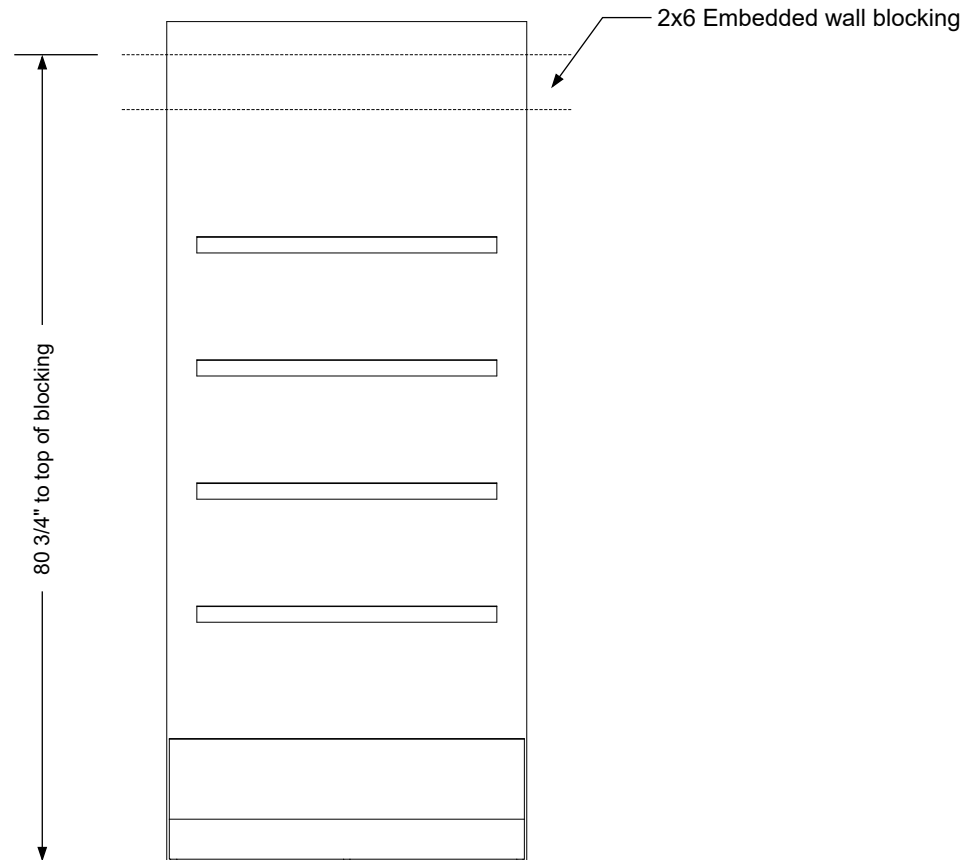
Assembly required - yes  
 Electrical required - no  
 Plumbing required - no  
 Wall blocking required - yes  
 COM yardage/laminate usage - 74 sf  
 4"h laminated plywood toe + 1/4"h glides  
 Other (specify) - n/a  
 Other (specify) - n/a

### Specification Drawing

This **Specification Drawing** is intended for communicating the basic description, function, appearance, dimensions, and features of an item as manufactured by Collins Manufacturing Company. Because this drawing does not contain project specific information such as quantities, finishes, or options, it is not an approval drawing and does not require a signature. This drawing remains the property of Collins Manufacturing Company and must not be used against the interests of Collins Manufacturing Company.

### Product Information

		Collins Manufacturing 2000 Bowser Road Cookeville, TN 38506	
Name: Floating Shelf			
Size: NTS	Part Number: 2003-36		Drawn By: Eng
Prepared Date: 4/8/20	Revision Date: Date	Revision Number: Rev #	Sheet: 1 of 2



**Wall blocking detail**


### Additional Information

Assembly required - yes  
 Electrical required - no  
 Plumbing required - no  
 Wall blocking required - yes  
 COM yardage/laminate usage - 74 sf  
 4"h laminated plywood toe + 1/4"h glides  
 Other (specify) - n/a  
 Other (specify) - n/a

### Specification Drawing

This **Specification Drawing** is intended for communicating the basic description, function, appearance, dimensions, and features of an item as manufactured by Collins Manufacturing Company. Because this drawing does not contain project specific information such as quantities, finishes, or options, it is not an approval drawing and does not require a signature. This drawing remains the property of Collins Manufacturing Company and must not be used against the interests of Collins Manufacturing Company.

### Product Information

		Collins Manufacturing 2000 Bowser Road Cookeville, TN 38506	
Name: Floating Shelf			
Size: NTS	Part Number: 2003-36		Drawn By: Eng
Prepared Date: 4/8/20	Revision Date: Date	Revision Number: Rev #	Sheet: 2 of 2