



EMPRESS RETAIL

SKU:2006-36



The Empress Retail cabinet catapults your school retail shelving from institutional shelves to high-end lockable retail units. LED down lighting paired with glass shelves, lockable glass doors, and finished interiors provide for an opportunity to display your products with the elegance found in a premier salon environment.

TECHNICAL INFORMATION

- 36"W x 15"D x 85"H
- Overall 36"W x 15"D x 85.25"H
- Eight 1/4" tempered glass shelves
- 1/4" tempered glass doors on heavy-duty roller track secured with ratchet lock system
- LED puck lights installed in header
- Exterior color matched interior inside the upper retail portion
- Lower closed storage with adjustable shelves and secured with a cam lock on each door

SHIPPING INFORMATION

Item generally ships via Freight(Truck) service

- Weight: 460 lbs
- Dimensions: 2 pallets

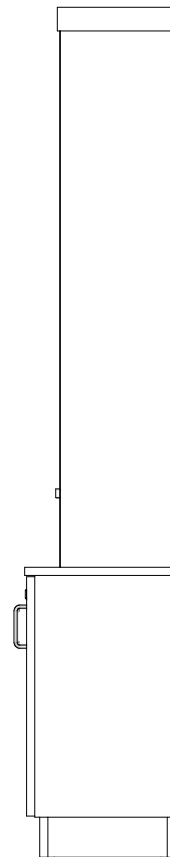
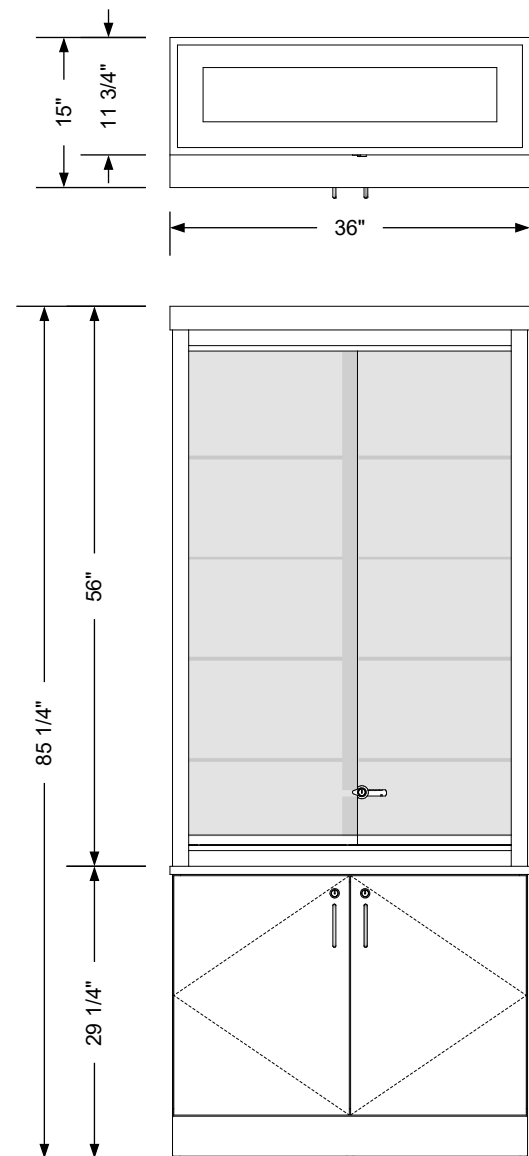
WARRANTY

3 Years:

- Ball-Bearing Drawer Slides
- Cabinet hinges

1 Year:

- All remaining components, unless noted otherwise, are guaranteed for a period of one year from the date of purchase.




Additional Information

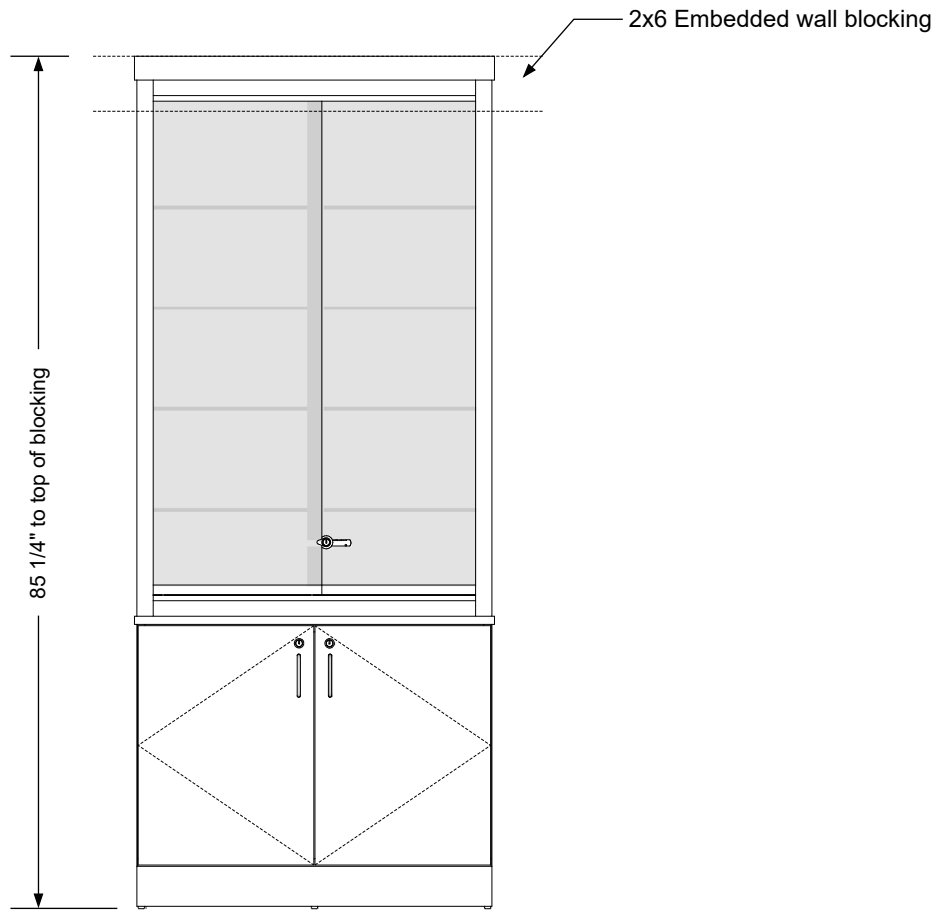
Assembly required - yes
 Electrical required - yes
 Plumbing required - n/a
 Wall blocking required - yes
 COM yardage/laminate usage - 96 sf
 4"h laminated plywood toe + 1/4"h glides
 Other (specify) - n/a
 Other (specify) - n/a

Specification Drawing

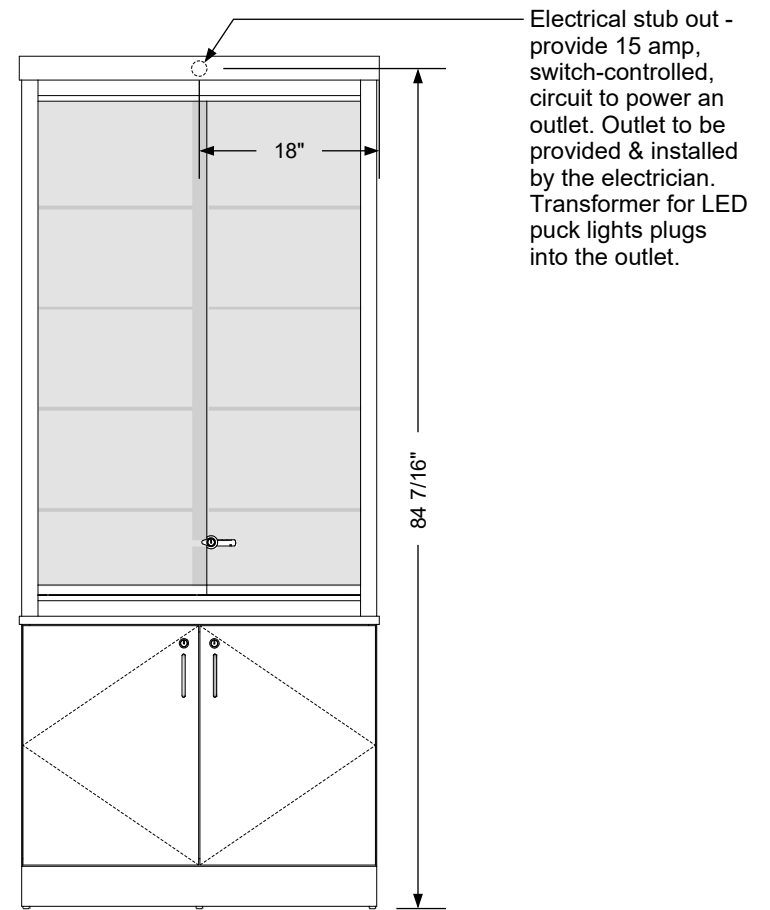
This **Specification Drawing** is intended for communicating the basic description, function, appearance, dimensions, and features of an item as manufactured by Collins Manufacturing Company. Because this drawing does not contain project specific information such as quantities, finishes, or options, it is not an approval drawing and does not require a signature. This drawing remains the property of Collins Manufacturing Company and must not be used against the interests of Collins Manufacturing Company.

Product Information

		Collins Manufacturing 2000 Bowser Road Cookeville, TN 38506	
Name: Empress Retail			
Size: NTS	Part Number: 2006-36		Drawn By: Eng
Prepared Date: 4/9/20	Revision Date: Date	Revision Number: Rev #	Sheet: 1 of 2



Wall blocking detail



Electrical stub out detail


Additional Information

Assembly required - yes
 Electrical required - yes
 Plumbing required - n/a
 Wall blocking required - yes
 COM yardage/laminate usage - 96 sf
 4"h laminated plywood toe + 1/4"h glides
 Other (specify) - n/a
 Other (specify) - n/a

Specification Drawing

This **Specification Drawing** is intended for communicating the basic description, function, appearance, dimensions, and features of an item as manufactured by Collins Manufacturing Company. Because this drawing does not contain project specific information such as quantities, finishes, or options, it is not an approval drawing and does not require a signature. This drawing remains the property of Collins Manufacturing Company and must not be used against the interests of Collins Manufacturing Company.

Product Information

		Collins Manufacturing 2000 Bowser Road Cookeville, TN 38506	
Name: Empress Retail			
Size: NTS	Part Number: 2006-36		Drawn By: Eng
Prepared Date: 4/9/20	Revision Date: Date	Revision Number: Rev #	Sheet: 2 of 2