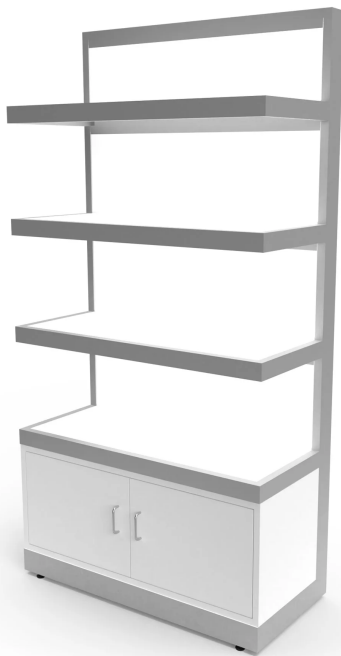




ILLUMINATED RETAIL

SKU:2005-36



Our Illuminated Retail display is an impressive addition to any retail setting. Its innovative design, complete with illuminated back and shelves, is ideal for showcasing new merchandise. The built-in storage cabinet below allows for efficient restocking and changing of displays.

TECHNICAL INFORMATION

- 36"W x 15-5/8"D x 70.5"H
- Powder coated steel frame
- Frosted glass shelves
- Shelving with LED lighting to highlight the retail offerings
- Storage below for excess products

SHIPPING INFORMATION

Item generally ships via Freight(Truck) service

- Weight: 350 lbs
- Dimensions: 48"L x 32"W x 78"H

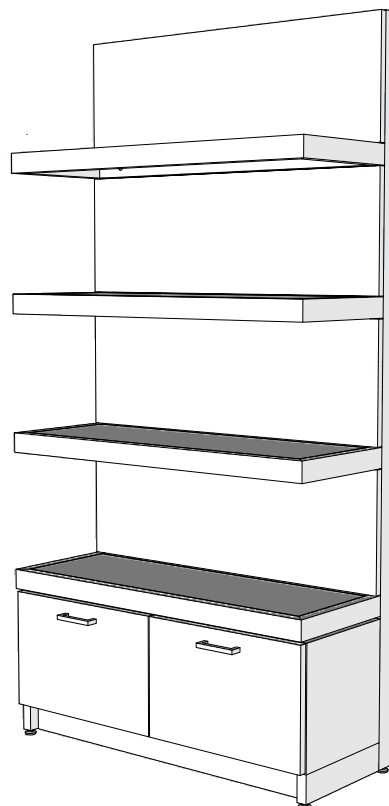
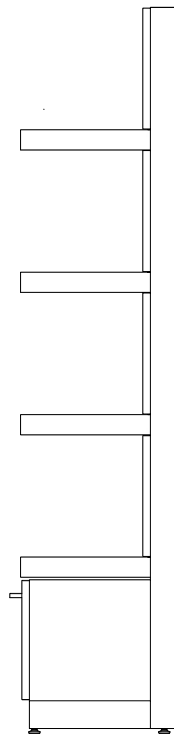
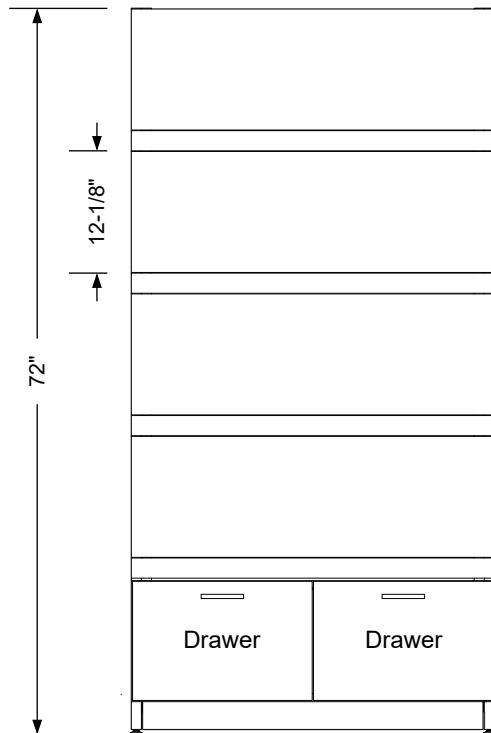
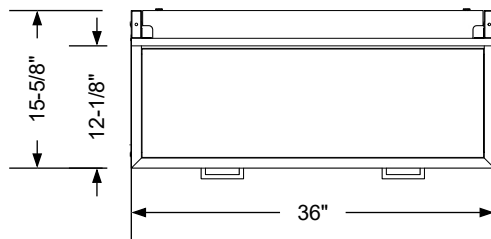
WARRANTY

3 Years:

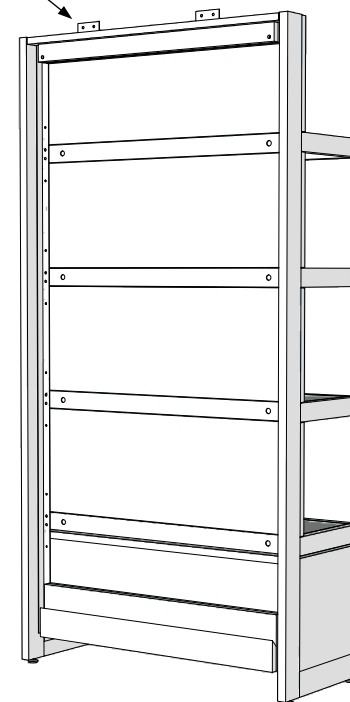
- Ball-Bearing Drawer Slides
- Cabinet hinges

1 Year:

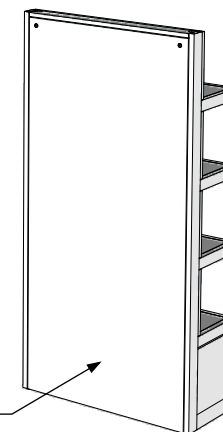
- All remaining components, unless noted otherwise, are guaranteed for a period of one year from the date of purchase.



Supplied L Brackets
to Secure to wall



*ADD-ON Finished Back
Convert to Island Retail




Additional Information

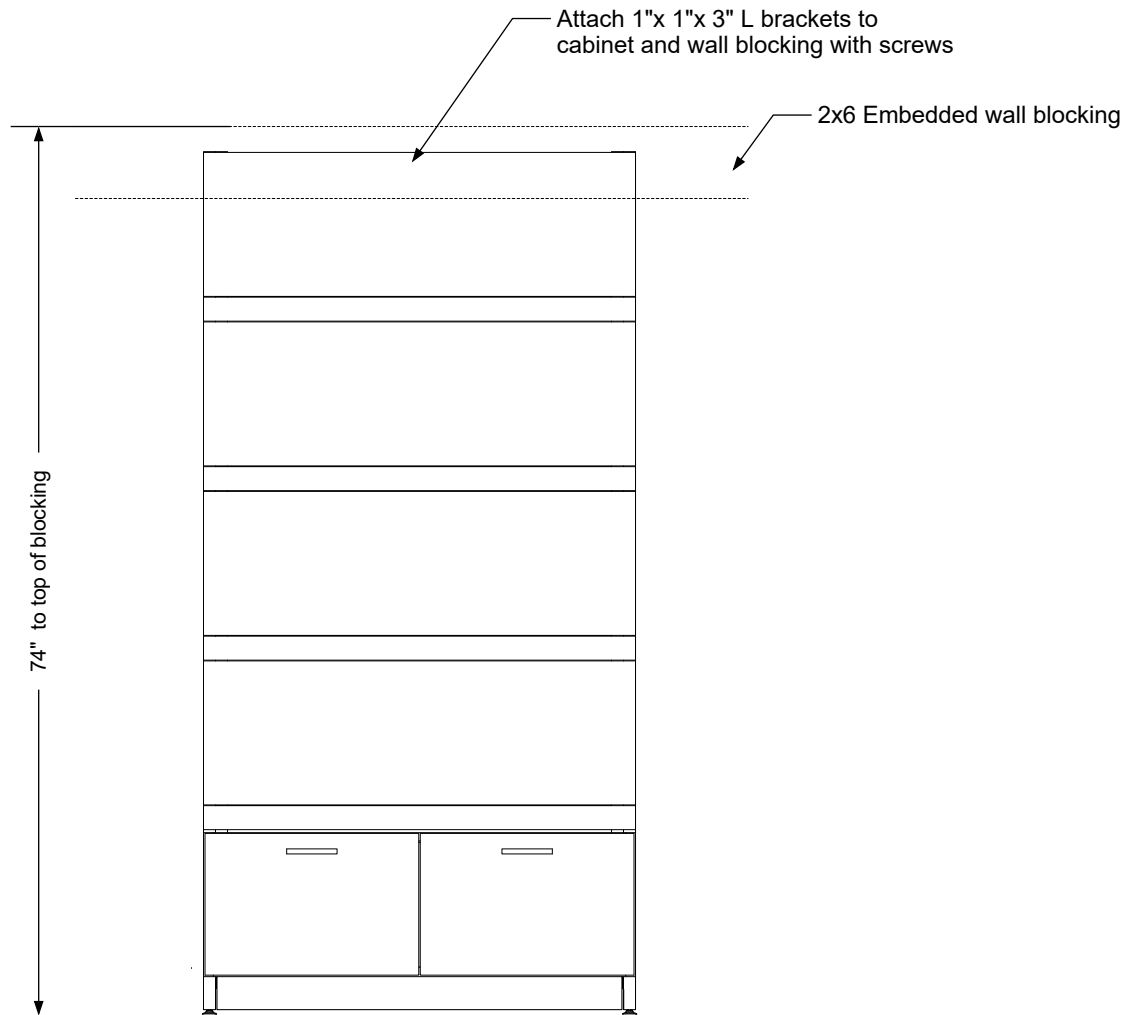
Assembly required - yes
Electrical required - yes
Plumbing required - n/a
Wall blocking required - yes
COM yardage/laminate usage - 38 sf
Metal Frame + 1/2" h Adj. glides
Other (specify) - n/a
Other (specify) - n/a

Specification Drawing

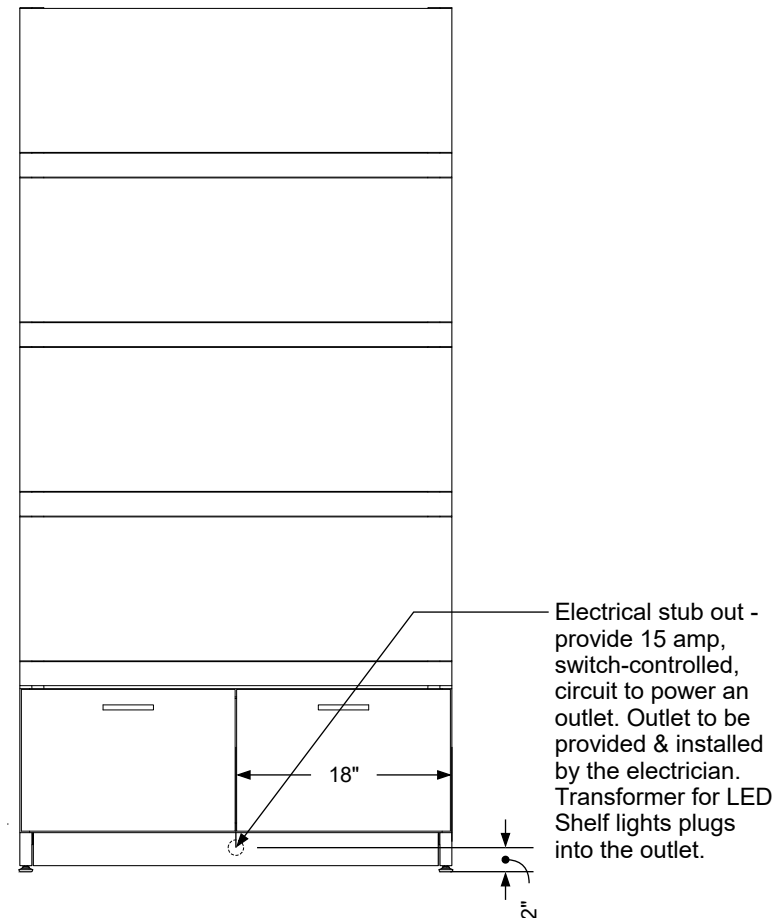
This **Specification Drawing** is intended for communicating the basic description, function, appearance, dimensions, features, and installation of an item as manufactured by Collins Manufacturing Company. Because this drawing does not contain project specific information such as quantities, finishes, or options, it is not an approval drawing and does not require a signature. This drawing remains the property of Collins Manufacturing Company and must not be used against the interests of Collins Manufacturing Company.

Product Information

| | | | |
|---|--------------------------|---|------------------|
|  | | Collins Manufacturing 2000 Bowser Road Cookeville, TN 38506 | |
| Name: <div>Illuminated Retail</div> | | | |
| Size: NTS | Part Number: 2005-36 | | Drawn By: Eng |
| Prepared Date: 4/20/20 | Revision Date: 8/4/20 | Revision Number: Rev 1 | Sheet: 1 of 2 |



Wall blocking detail



Electrical stub out detail


Additional Information

Assembly required - yes
 Electrical required - yes
 Plumbing required - n/a
 Wall blocking required - yes
 COM yardage/laminate usage - 38 sf
 Metal Legs + 1/2" h Adj. glides
 Other (specify) - n/a
 Other (specify) - n/a

Specification Drawing

This **Specification Drawing** is intended for communicating the basic description, function, appearance, dimensions, features, and installation of an item as manufactured by Collins Manufacturing Company. Because this drawing does not contain project specific information such as quantities, finishes, or options, it is not an approval drawing and does not require a signature. This drawing remains the property of Collins Manufacturing Company and must not be used against the interests of Collins Manufacturing Company.

Product Information

| | | | |
|---|--------------------------|---|------------------|
|  | | Collins Manufacturing 2000 Bowser Road Cookeville, TN 38506 | |
| Name: <div>Illuminated Retail</div> | | | |
| Size: NTS | Part Number: 2005-36 | | Drawn By: Eng |
| Prepared Date: 4/20/20 | Revision Date: 8/5/20 | Revision Number: Rev 1 | Sheet: 2 of 2 |