



## WALL KIT DISPLAY

SKU:2008-36



This wall mounted student kit display is a beautiful way to advertise your student kits. The glass doors lock, keeping your collection safe and secure. Choose from a variety of options and colors to fit any décor.

### TECHNICAL INFORMATION

---

- 36"W x 14"D x 24"H
- Locking glass doors
- Two glass shelves

### SHIPPING INFORMATION

---

Item generally ships via Freight(Truck) service

- Weight: 130 lbs
- Dimensions: 48"L x 32"W x 32"H

### WARRANTY

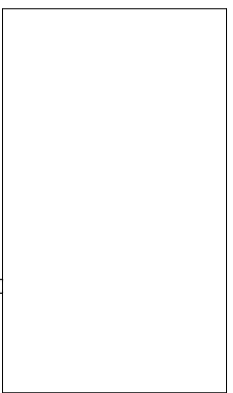
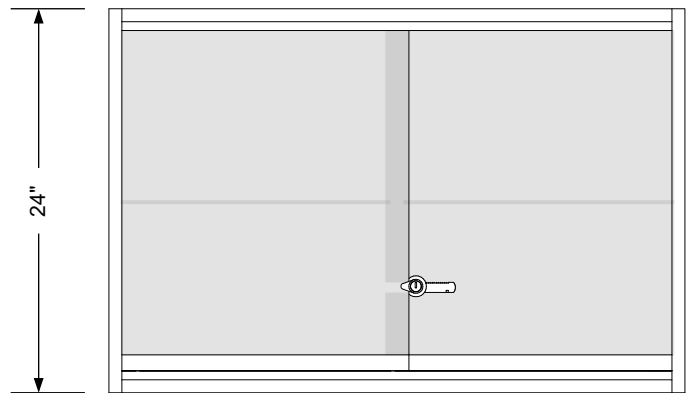
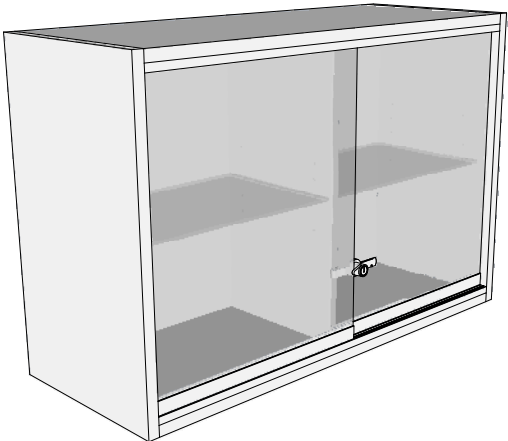
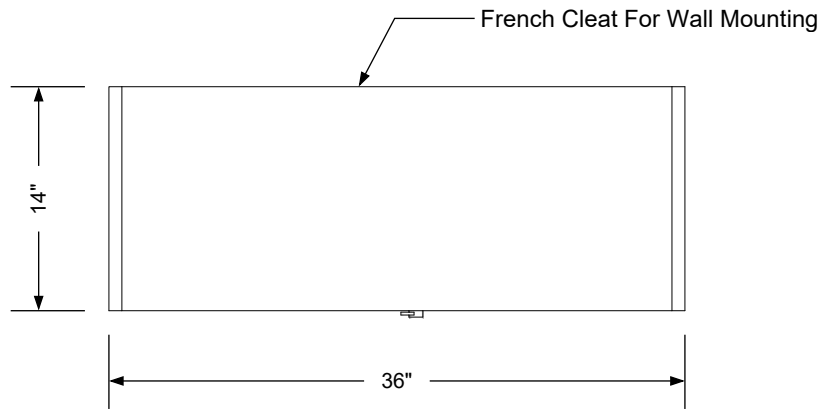
---

#### 3 Years:

- Ball-Bearing Drawer Slides
- Cabinet hinges

#### 1 Year:

- All remaining components, unless noted otherwise, are guaranteed for a period of one year from the date of purchase.




**Additional Information**

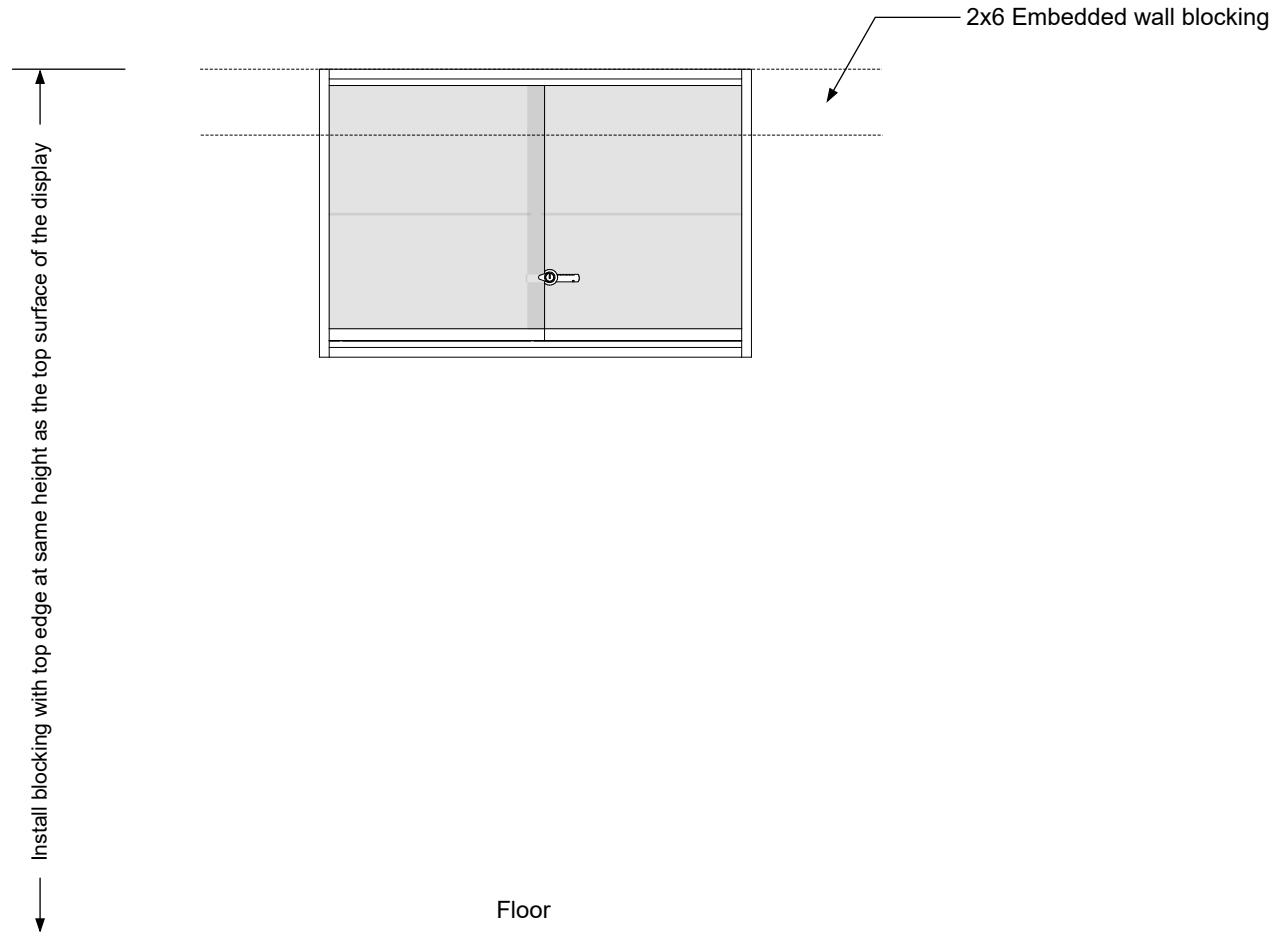
Assembly required - no  
 Electrical required - no  
 Plumbing required - no  
 Wall blocking required - yes  
 COM yardage/laminate usage - 44 sf  
 Wall mounted - height to be determined  
 Other (specify) - n/a  
 Other (specify) - n/a

**Specification Drawing**

This **Specification Drawing** is intended for communicating the basic description, function, appearance, dimensions, and features of an item as manufactured by Collins Manufacturing Company. Because this drawing does not contain project specific information such as quantities, finishes, or options, it is not an approval drawing and does not require a signature. This drawing remains the property of Collins Manufacturing Company and must not be used against the interests of Collins Manufacturing Company.

**Product Information**

		Collins Manufacturing 2000 Bowser Road Cookeville, TN 38506	
Name: <b>Wall Kit Display</b>			
Size: <b>NTS</b>	Part Number: <b>2008-36</b>	Drawn By: <b>Eng</b>	
Prepared Date: <b>4/14/20</b>	Revision Date: <b>Date</b>	Revision Number: <b>Rev #</b>	Sheet: <b>1 of 2</b>



**Wall blocking detail**


**Additional Information**

Assembly required - no  
 Electrical required - no  
 Plumbing required - no  
 Wall blocking required - yes  
 COM yardage/laminate usage - 44 sf  
 Wall mounted - height to be determined  
 Other (specify) - n/a  
 Other (specify) - n/a

**Specification Drawing**

This **Specification Drawing** is intended for communicating the basic description, function, appearance, dimensions, and features of an item as manufactured by Collins Manufacturing Company. Because this drawing does not contain project specific information such as quantities, finishes, or options, it is not an approval drawing and does not require a signature. This drawing remains the property of Collins Manufacturing Company and must not be used against the interests of Collins Manufacturing Company.

**Product Information**

		Collins Manufacturing 2000 Bowser Road Cookeville, TN 38506	
Name: <b>Wall Kit Display</b>			
Size: <b>NTS</b>	Part Number: <b>2008-36</b>	Drawn By: <b>Eng</b>	
Prepared Date: <b>4/14/20</b>	Revision Date: <b>Date</b>	Revision Number: <b>Rev #</b>	Sheet: <b>2 of 2</b>