



## STUDENT KIT DISPLAY

SKU:2007-36

This beautiful Student Kit Display unit is a great way to advertise and store your student kits. Complete with three glass shelves, puck lights, and locking glass doors, it's the perfect addition to any school classroom.

### TECHNICAL INFORMATION

---

- 36"W x 16"D x 72"H
- Free standing display
- Puck LED lights
- Glass shelves
- Sliding/locking glass doors
- Unfinished back

### SHIPPING INFORMATION

---

Item generally ships via Freight(Truck) service

- Weight: 225 lbs
- Dimensions: 48"L x 32"W x 80"H

### WARRANTY

---

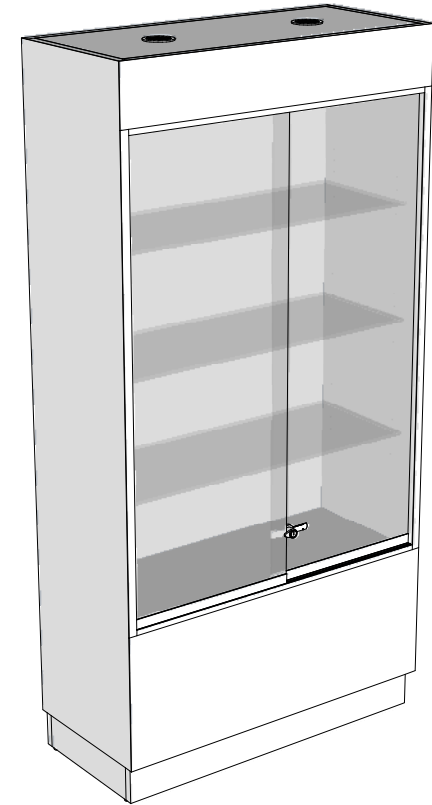
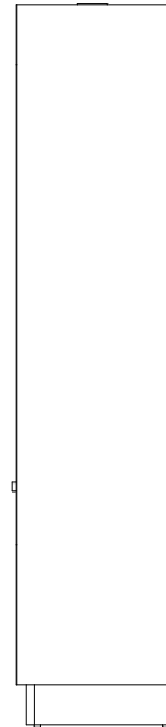
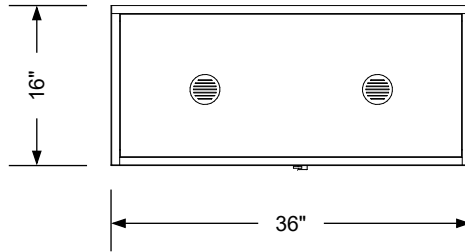
#### 3 Years:

- Ball-Bearing Drawer Slides
- Cabinet hinges

#### 1 Year:

- All remaining components, unless noted otherwise, are guaranteed for a period of one year from the date of purchase.






### Additional Information

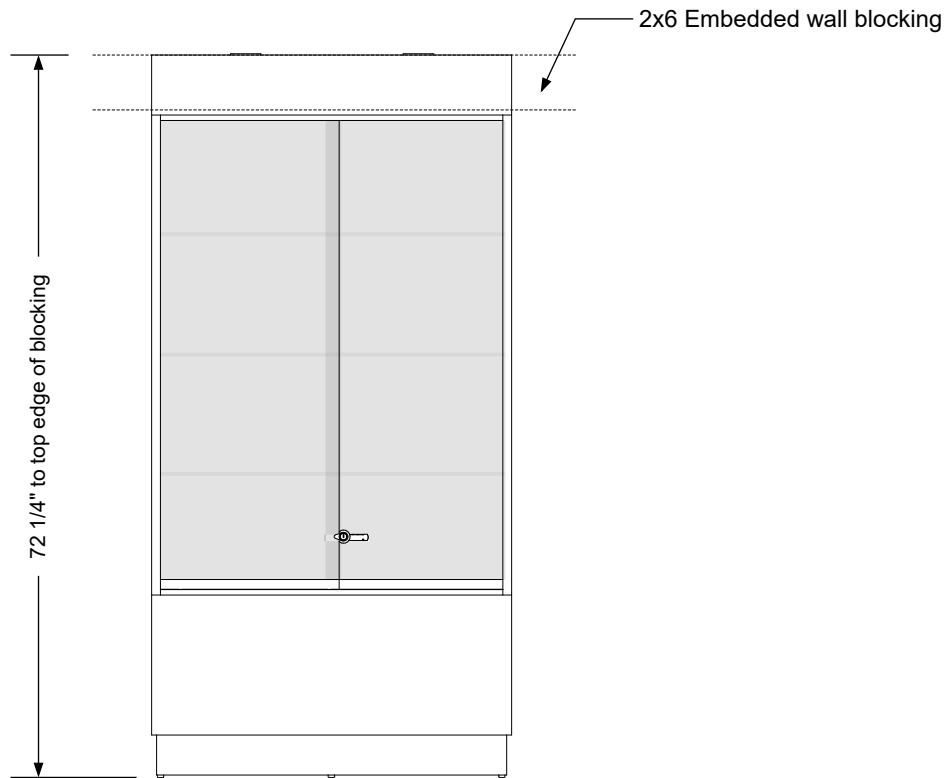
Assembly required - no  
 Electrical required - yes  
 Plumbing required - no  
 Wall blocking required - yes  
 COM yardage/laminate usage - 74 sf  
 4"h laminated plywood toe + 1/4"h glides  
 Other (specify) - n/a  
 Other (specify) - n/a

### Specification Drawing

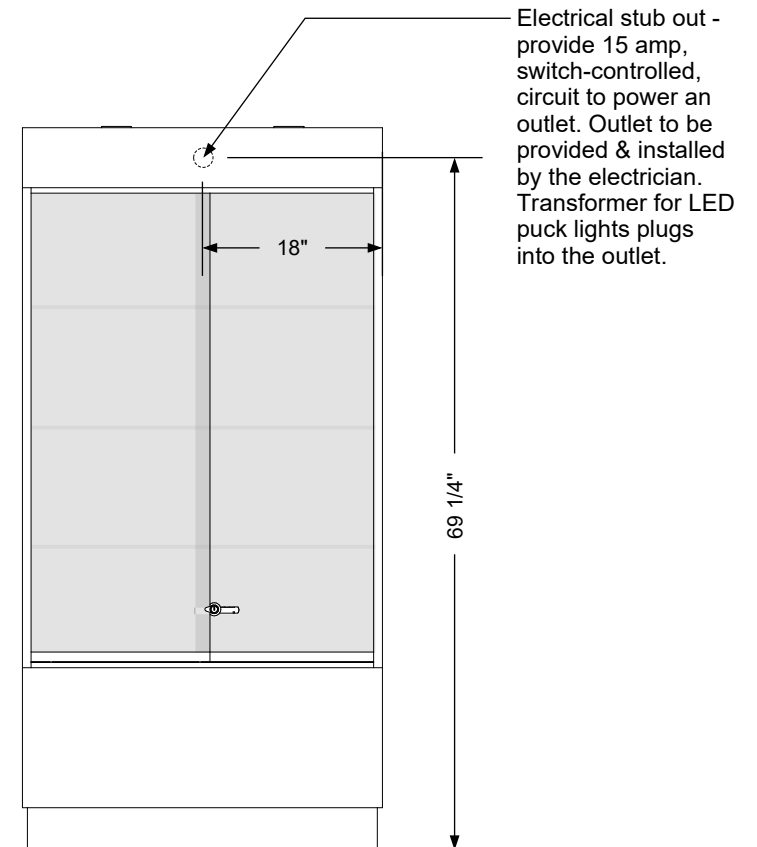
This **Specification Drawing** is intended for communicating the basic description, function, appearance, dimensions, and features of an item as manufactured by Collins Manufacturing Company. Because this drawing does not contain project specific information such as quantities, finishes, or options, it is not an approval drawing and does not require a signature. This drawing remains the property of Collins Manufacturing Company and must not be used against the interests of Collins Manufacturing Company.

### Product Information

		Collins Manufacturing 2000 Bowser Road Cookeville, TN 38506	
Name: Student Kit Display			
Size: NTS	Part Number: 2007-36		Drawn By: Eng
Prepared Date: 4/14/20	Revision Date: Date	Revision Number: Rev #	Sheet: 1 of 2



**Wall blocking detail**



**Electrical stub out detail**


### Additional Information

Assembly required - no  
 Electrical required - yes  
 Plumbing required - no  
 Wall blocking required - yes  
 COM yardage/laminate usage - 74 sf  
 4"h laminated plywood toe + 1/4"h glides  
 Other (specify) - n/a  
 Other (specify) - n/a

### Specification Drawing

This **Specification Drawing** is intended for communicating the basic description, function, appearance, dimensions, and features of an item as manufactured by Collins Manufacturing Company. Because this drawing does not contain project specific information such as quantities, finishes, or options, it is not an approval drawing and does not require a signature. This drawing remains the property of Collins Manufacturing Company and must not be used against the interests of Collins Manufacturing Company.

### Product Information

		Collins Manufacturing 2000 Bowser Road Cookeville, TN 38506	
Name: <div>Student Kit Display</div>			
Size: NTS	Part Number: 2007-36		Drawn By: Eng
Prepared Date: 4/14/20	Revision Date: Date	Revision Number: Rev #	Sheet: 2 of 2