



ST. JAMES DESK

SKU:2033-72

Our St. James two person standing reception desk is the perfect way to make a first impression. We have designed this piece with a customer ledge and shelving, as well as an area for you to put your computer screens and essentials. The extra shelving make a great place to store your retail wrapping supplies as well as other front of house items.

TECHNICAL INFORMATION

- 72"W x 28"D x 44"H
- Floating customer ledge
- Printer space
- Grommets to all areas
- Two locking drawers
- Retail-bag storage

SHIPPING INFORMATION

Item generally ships via Freight(Truck) service

- Weight: 450 lbs
- Dimensions: 84"L x 32"W x 52"H

WARRANTY

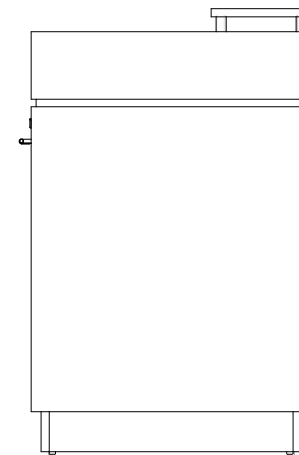
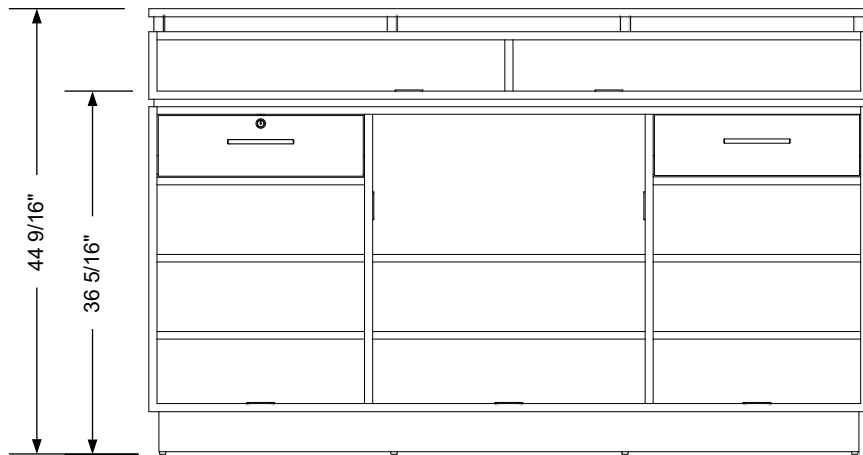
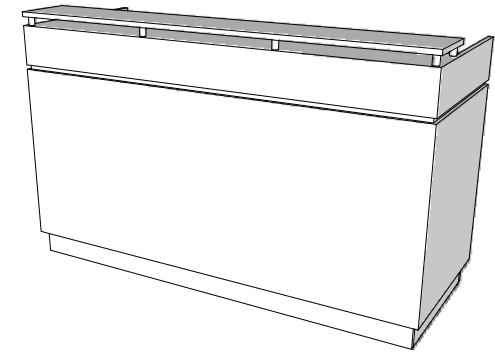
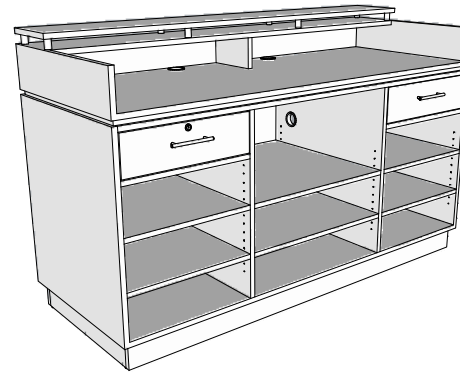
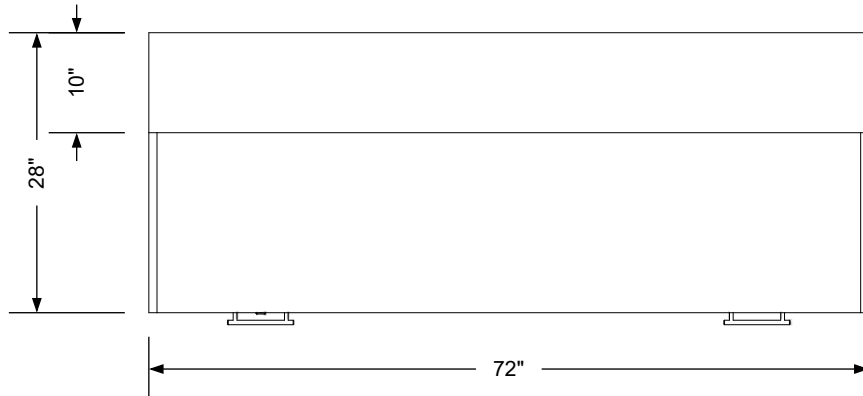
3 Years:

- Ball-Bearing Drawer Slides
- Cabinet hinges

1 Year:

- All remaining components, unless noted otherwise, are guaranteed for a period of one year from the date of purchase.






Additional Information

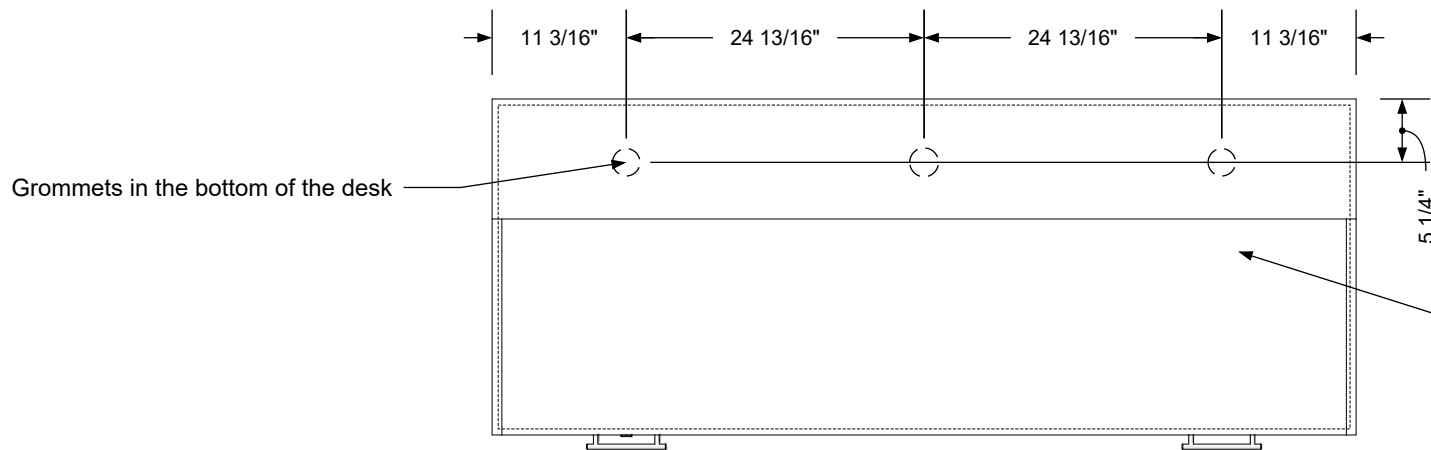
Assembly required - no
 Electrical required - yes
 Plumbing required - no
 Wall blocking required - no
 COM yardage/laminate usage - 244 sf
 4"h laminated plywood toe + 1/4"h glides
 Other (specify) - n/a
 Other (specify) - n/a

Specification Drawing

This **Specification Drawing** is intended for communicating the basic description, function, appearance, dimensions, and features of an item as manufactured by Collins Manufacturing Company. Because this drawing does not contain project specific information such as quantities, finishes, or options, it is not an approval drawing and does not require a signature. This drawing remains the property of Collins Manufacturing Company and must not be used against the interests of Collins Manufacturing Company.

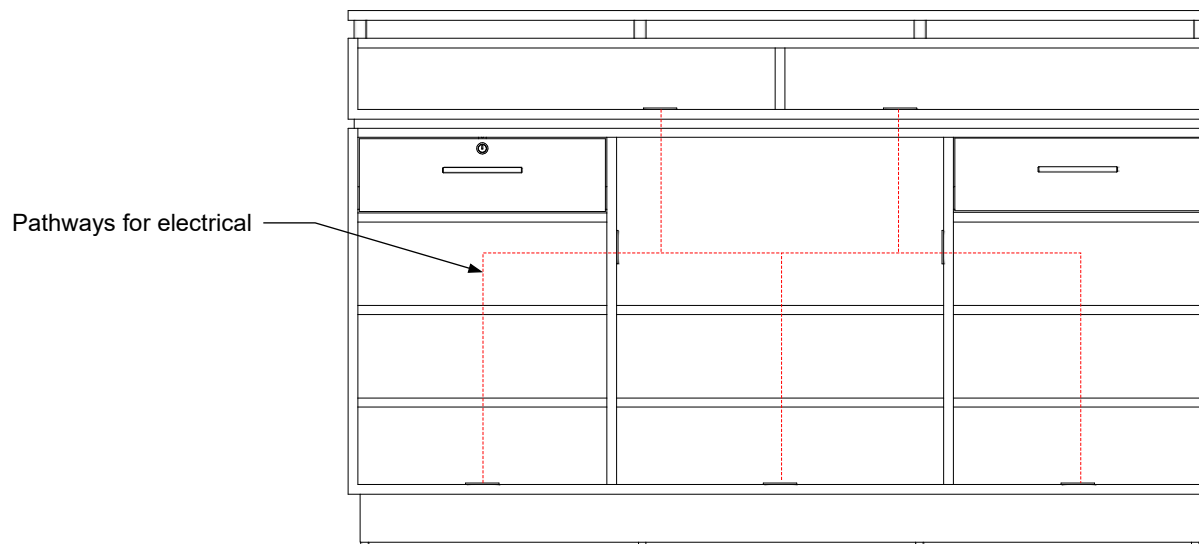
Product Information

		Collins Manufacturing 2000 Bowser Road Cookeville, TN 38506	
Name: St. James Desk			
Size: NTS	Part Number: 2033-72	Drawn By: Eng	
Prepared Date: 4/14/20	Revision Date: Date	Revision Number: Rev #	Sheet: 1 of 2



Grommets in the bottom of the desk

Provide 20 amp electrical stub out anywhere within the inside of the toe kick base. The power may then be directed through the desk and connected to outlets. The outlets are provided, installed, and wired by the electrician according to project-specific requirements.



Pathways for electrical

Electrical stub out detail

Additional Information

Assembly required - no
 Electrical required - yes
 Plumbing required - no
 Wall blocking required - no
 COM yardage/laminate usage - 244 sf
 4" h laminated plywood toe + 1/4" h glides
 Other (specify) - n/a
 Other (specify) - n/a

Specification Drawing

This **Specification Drawing** is intended for communicating the basic description, function, appearance, dimensions, and features of an item as manufactured by Collins Manufacturing Company. Because this drawing does not contain project specific information such as quantities, finishes, or options, it is not an approval drawing and does not require a signature. This drawing remains the property of Collins Manufacturing Company and must not be used against the interests of Collins Manufacturing Company.

Product Information

		Collins Manufacturing 2000 Bowser Road Cookeville, TN 38506	
Name: St. James Desk			
Size: NTS	Part Number: 2033-72	Drawn By: Eng	
Prepared Date: 4/14/20	Revision Date: Date	Revision Number: Rev #	Sheet: 2 of 2