



VEECO WDWS

SKU:2102-28



The Veeco WDWS styling station is constructed with a modern, sleek and functional design. The stainless steel finish on the mirror frame allows it to have a clean and classic look that would go well with any decor. This styling station has built in tool holders and tool hooks, as well as storage for additional items under the station.

The default drawer front laminate is brushed aluminum. Stainless top has 80 grit finish.

TECHNICAL INFORMATION

- 28"W x 25"D x 72"H
- Stainless steel construction with laminated wooden drawer.
- Two sided workstation with framed mirrors
- Ledge w/ appliance holders
- Drawer for each side
- Bottom stainless shelf
- Heavy duty locking casters
- Two 20-amp quad outlets

SHIPPING INFORMATION

Item generally ships via Freight(Truck) service

- Weight: 275 lbs
- Dimensions: 48"L x 32"W x 50"H

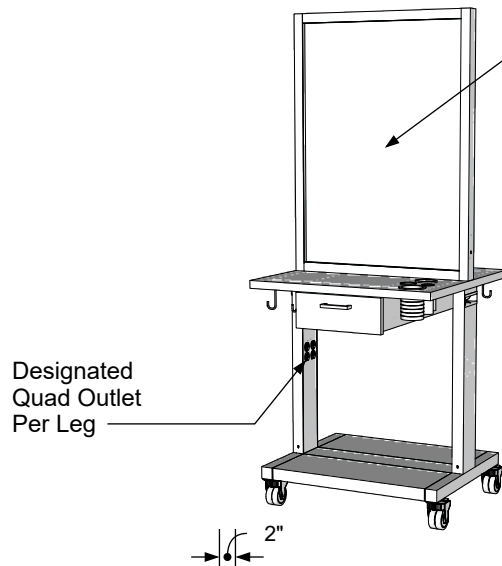
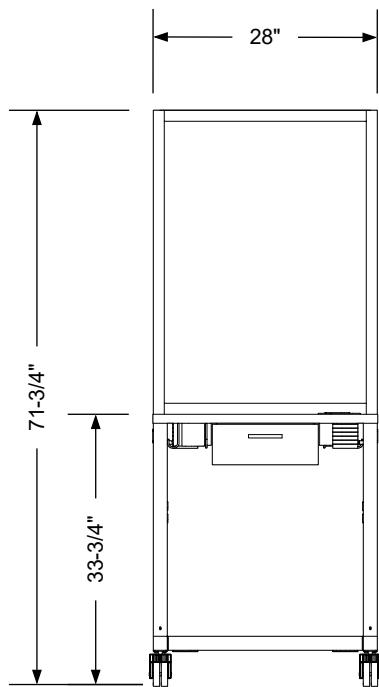
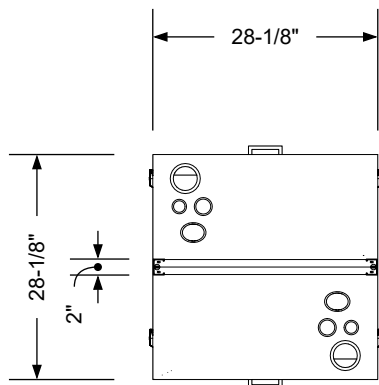
WARRANTY

3 Years:

- Ball-Bearing Drawer Slides
- Cabinet hinges

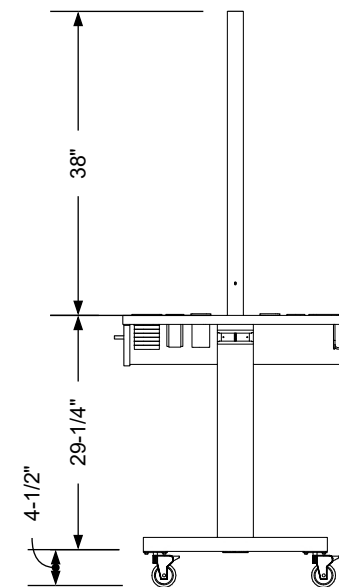
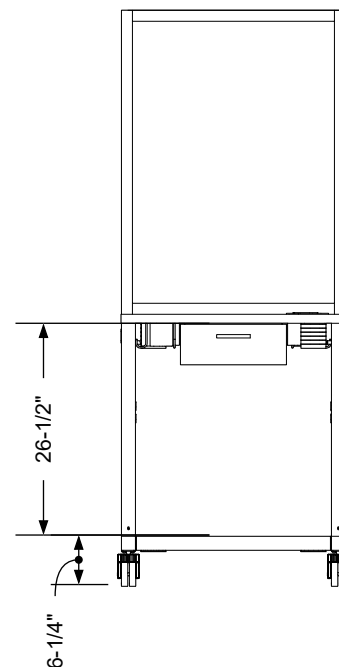
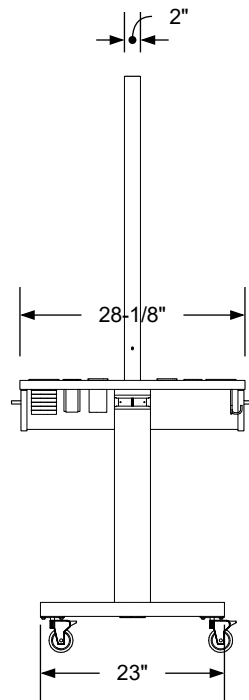
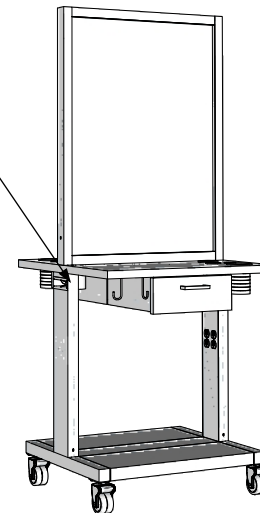
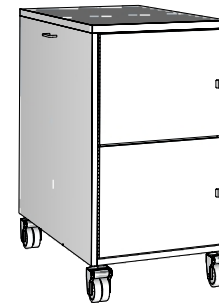
1 Year:

- All remaining components, unless noted otherwise, are guaranteed for a period of one year from the date of purchase.



Docking Teeth Available for Added Side Storage

***SIDE STORAGE CAB NOT INCLUDED**



Additional Information

Assembly required - yes
 Electrical required - yes
 Plumbing required - n/a
 Wall blocking required - n/a
 COM yardage/laminate usage - 4 1/2" h Double Wheel Casters
 Other (specify) - n/a
 Other (specify) - n/a

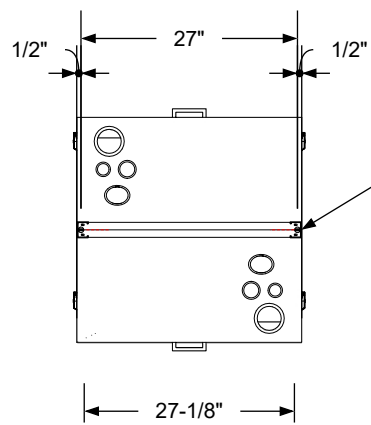
Specification Drawing

This **Specification Drawing** is intended for communicating the basic description, function, appearance, dimensions, features, and installation of an item as manufactured by Collins Manufacturing Company. Because this drawing does not contain project specific information such as quantities, finishes, or options, it is not an approval drawing and does not require a signature. This drawing remains the property of Collins Manufacturing Company and must not be used against the interests of Collins Manufacturing Company.

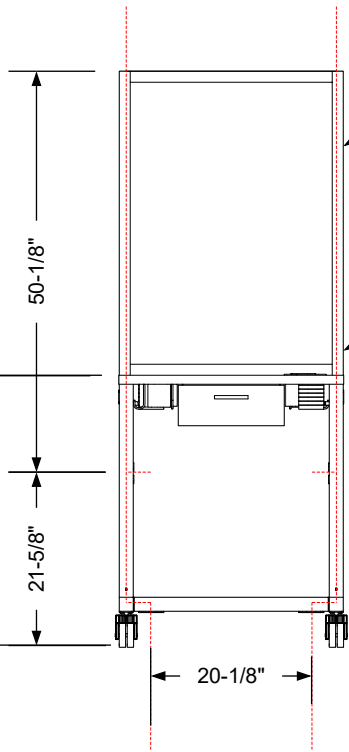
Product Information

		Collins Manufacturing 2000 Bowser Road Cookeville, TN 38506	
Name: Veeco WDWS			
Size: NTS	Part Number: 2102-28	Drawn By: NOZ	
Prepared Date: 9/15/20	Revision Date: Date	Revision Number: Rev #	Sheet: 1 of 2

Approximate Length of Cord Needs to be requested for electrifying to the ceiling.



Pathways for electrical.



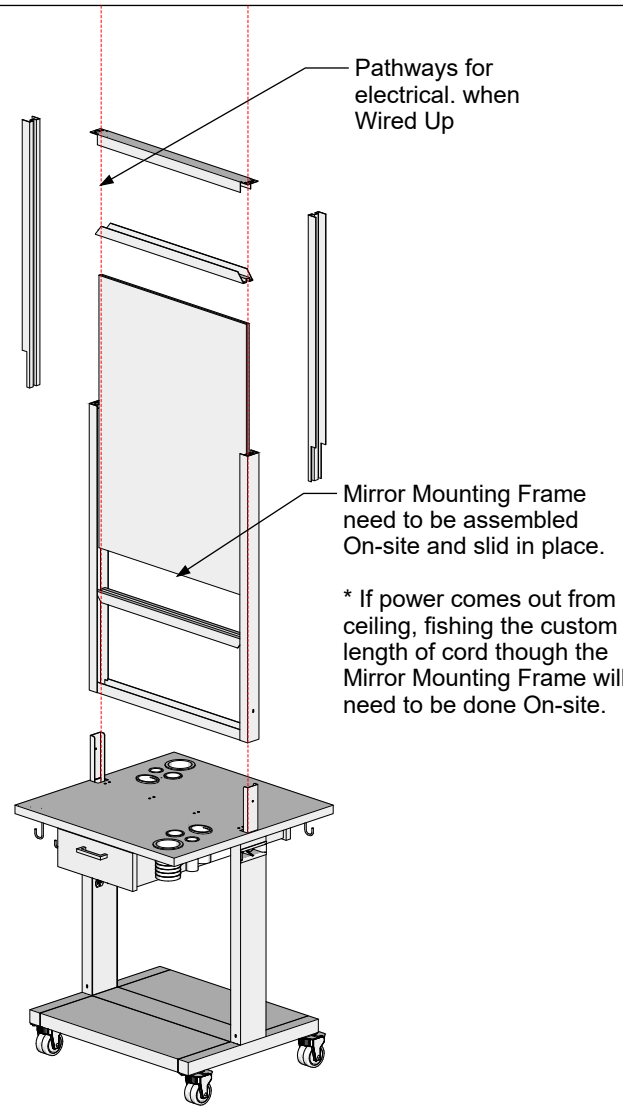
Pathways for electrical.

The electrician is responsible for designated 20 amp power to the quad outlets per each leg, either from the ceiling, or up from the floor along the indicated path.

If powering the station from the ceiling is requested, Collins will require the electrician to wire specified length from the top of the 34" Work surface of the station with a Quick Disconnect connection to the ceiling outlets.

* Standard unit is sold with two 20 Amp 6ft pluggable cord from the bottom.

Electrical stub out detail



Pathways for electrical. when Wired Up

Mirror Mounting Frame need to be assembled On-site and slid in place.

* If power comes out from ceiling, fishing the custom length of cord though the Mirror Mounting Frame will need to be done On-site.

Additional Information

- Assembly required - yes
- Electrical required - yes
- Plumbing required - n/a
- Wall blocking required - n/a
- COM yardage/laminate usage - 4 1/2" h Double Wheel Casters
- Other (specify) - n/a
- Other (specify) - n/a

Specification Drawing

This **Specification Drawing** is intended for communicating the basic description, function, appearance, dimensions, features, and installation of an item as manufactured by Collins Manufacturing Company. Because this drawing does not contain project specific information such as quantities, finishes, or options, it is not an approval drawing and does not require a signature. This drawing remains the property of Collins Manufacturing Company and must not be used against the interests of Collins Manufacturing Company.

Product Information

		Collins Manufacturing	
		2000 Bowser Road Cookeville, TN 38506	
Name: Veeco WDWS			
Size: NTS	Part Number: 2102-28	Drawn By: NOZ	
Prepared Date: 9/15/20	Revision Date: Date	Revision Number: Rev #	Sheet: 2 of 2