



## FCC SINGLE STATION

SKU:2126-38

Our FCC Styling Station is built to help your students prep for success. This stylish station features a stylist station and plenty of storage options including drawers, shelving and a convenient ledge for essentials. It also has a built in tool holder to keep your students organized.

### TECHNICAL INFORMATION

---

- 38"W x 30.5"D x 90"H
- Tool holders
- Drawer
- Work shelf
- Large storage area for student kit
- Fourplex outlet
- 
- Storage for mannequin heads
- 

### SHIPPING INFORMATION

---

Item generally ships via Freight(Truck) service

- Weight: 425 lbs
- Dimensions: 48"L x 32"W x 98"H

### WARRANTY

---

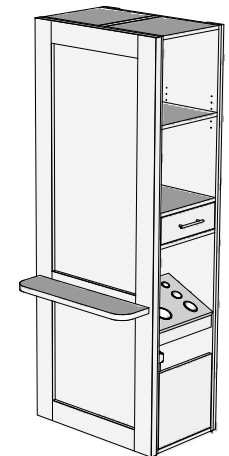
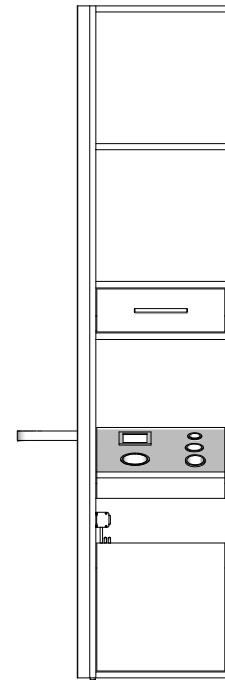
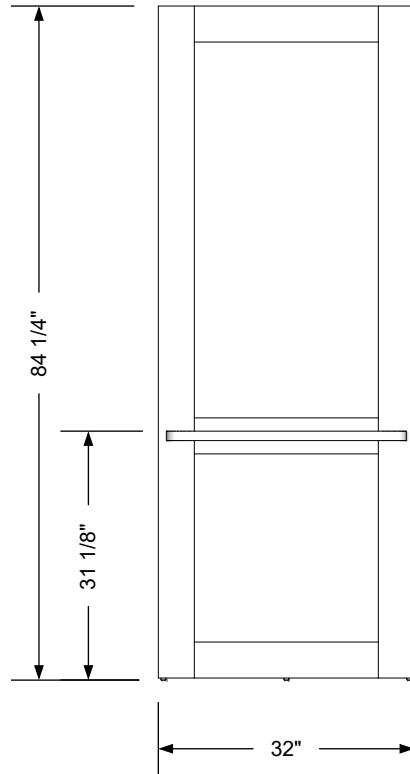
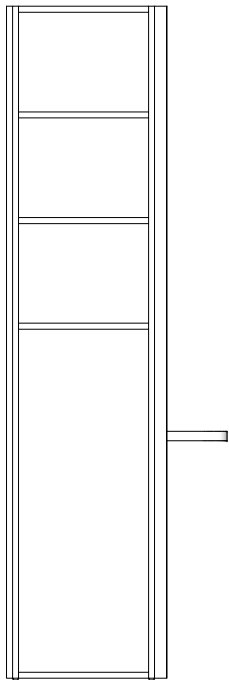
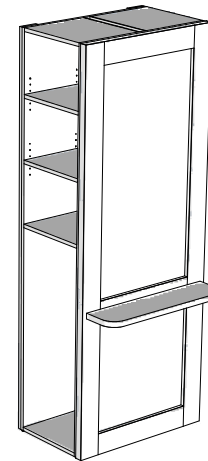
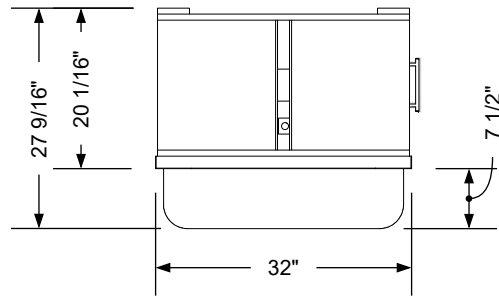
#### 3 Years:

- Ball-Bearing Drawer Slides
- Cabinet hinges

#### 1 Year:

- All remaining components, unless noted otherwise, are guaranteed for a period of one year from the date of purchase.






### Additional Information

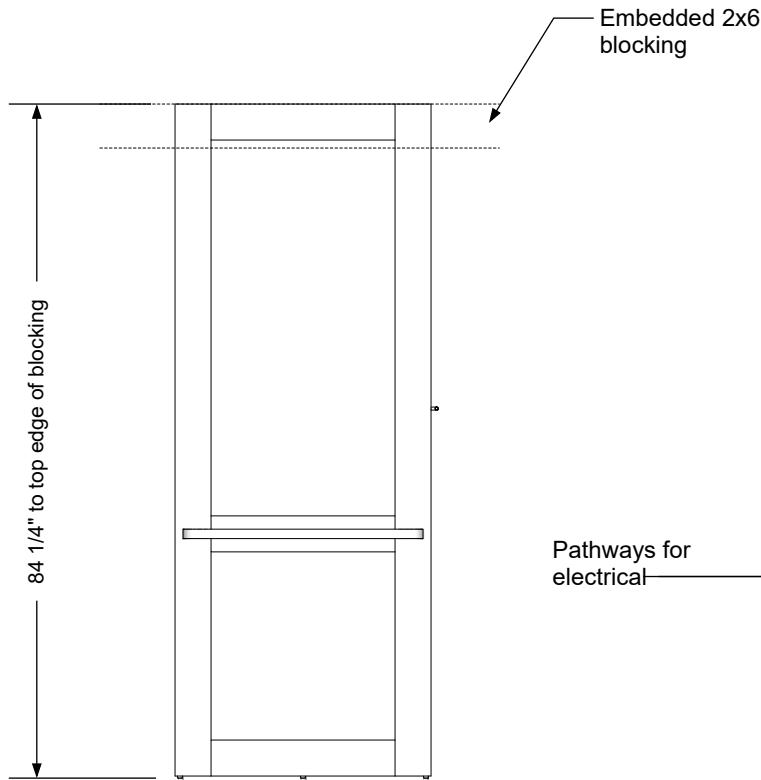
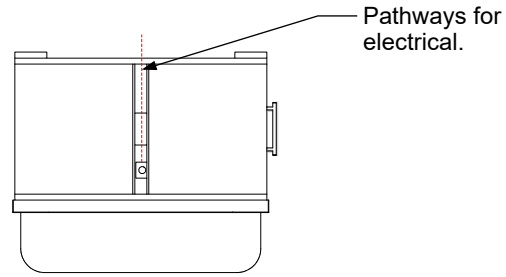
Assembly required - yes  
 Electrical required - yes  
 Plumbing required - no  
 Wall blocking required - no  
 COM yardage/laminate usage - 174 sf  
 No toe kick base + 1/4" h glides  
 Other (specify) - n/a  
 Other (specify) - n/a

### Specification Drawing

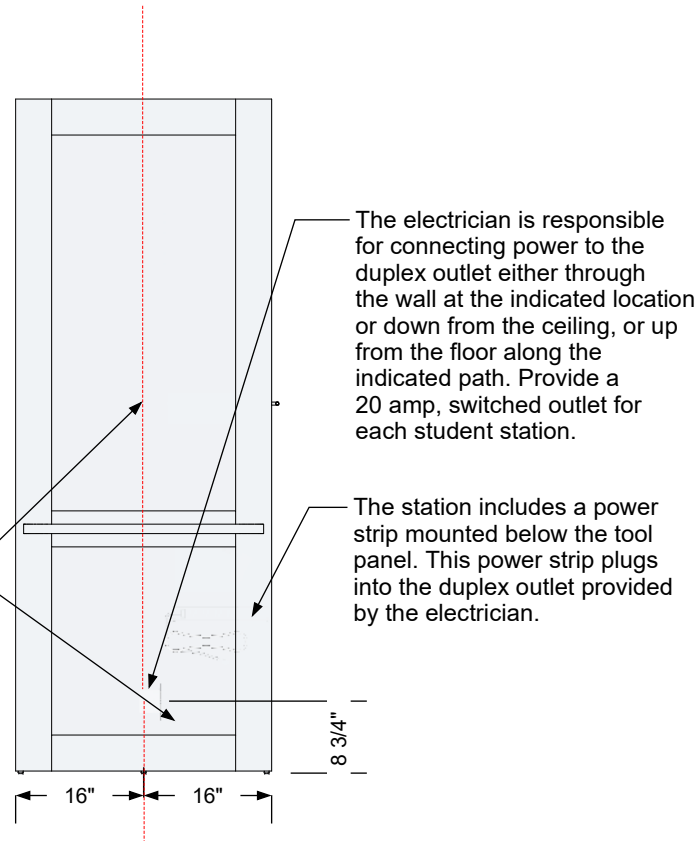
This **Specification Drawing** is intended for communicating the basic description, function, appearance, dimensions, features, and installation of an item as manufactured by Collins Manufacturing Company. Because this drawing does not contain project specific information such as quantities, finishes, or options, it is not an approval drawing and does not require a signature. This drawing remains the property of Collins Manufacturing Company and must not be used against the interests of Collins Manufacturing Company.

### Product Information

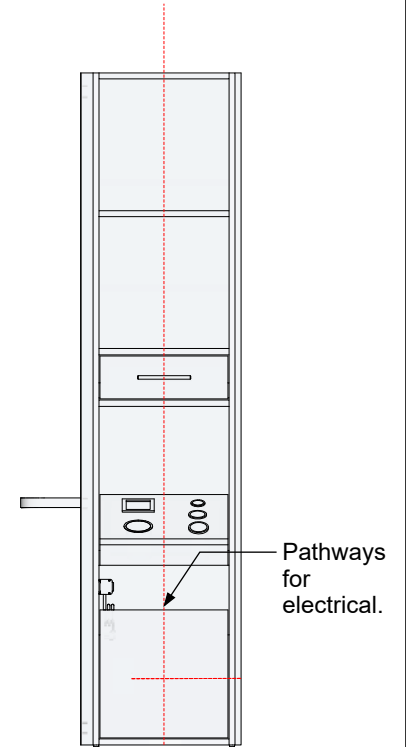
		Collins Manufacturing 2000 Bowser Road Cookeville, TN 38506	
Name: FCC Single Station			
Size: NTS	Part Number: 2126-38	Drawn By: Eng	
Prepared Date: 5/6/20	Revision Date: 4/21/22	Revision Number: Rev #1	Sheet: 1 of 2



**Wall blocking detail**



**Electrical stub out detail**



**Additional Information**

Assembly required - yes  
 Electrical required - yes  
 Plumbing required - no  
 Wall blocking required - no  
 COM yardage/laminate usage - 174 sf  
 No toe kick base + 1/4" h glides  
 Other (specify) - n/a  
 Other (specify) - n/a

**Specification Drawing**

This **Specification Drawing** is intended for communicating the basic description, function, appearance, dimensions, features, and installation of an item as manufactured by Collins Manufacturing Company. Because this drawing does not contain project specific information such as quantities, finishes, or options, it is not an approval drawing and does not require a signature. This drawing remains the property of Collins Manufacturing Company and must not be used against the interests of Collins Manufacturing Company.

**Product Information**

		Collins Manufacturing	
		2000 Bowser Road Cookeville, TN 38506	
Name: FCC Single Station			
Size: NTS	Part Number: 2126-38	Drawn By: Eng	
Prepared Date: 5/6/20	Revision Date: 4/21/22	Revision Number: Rev #1	Sheet: 2 of 2