



DOUBLE WALL STATION WITH CONTINUOUS TOP AND BASE

SKU:2140-96

This beautiful Double Wall Styling Station provides extra workspace for two stylists. The sleek design features a continuous top and continuous base, creating a modern look that is sure to catch all eyes.

TECHNICAL INFORMATION

- 96"W x 20"D x 76.5"H
- Featuring two stations w/ framed mirrors
- Laminated continuous tops
- Tool holders
- Continuous base providing for wiring chase options

SHIPPING INFORMATION

Item generally ships via Freight(Truck) service

- Weight: 450 lbs
- Dimensions: 2 pallets

WARRANTY

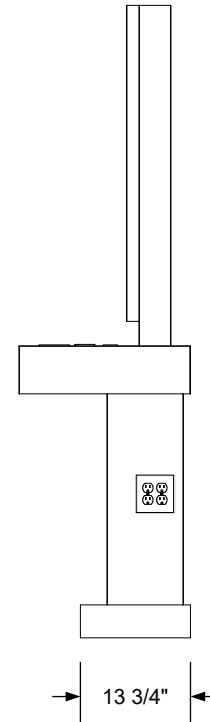
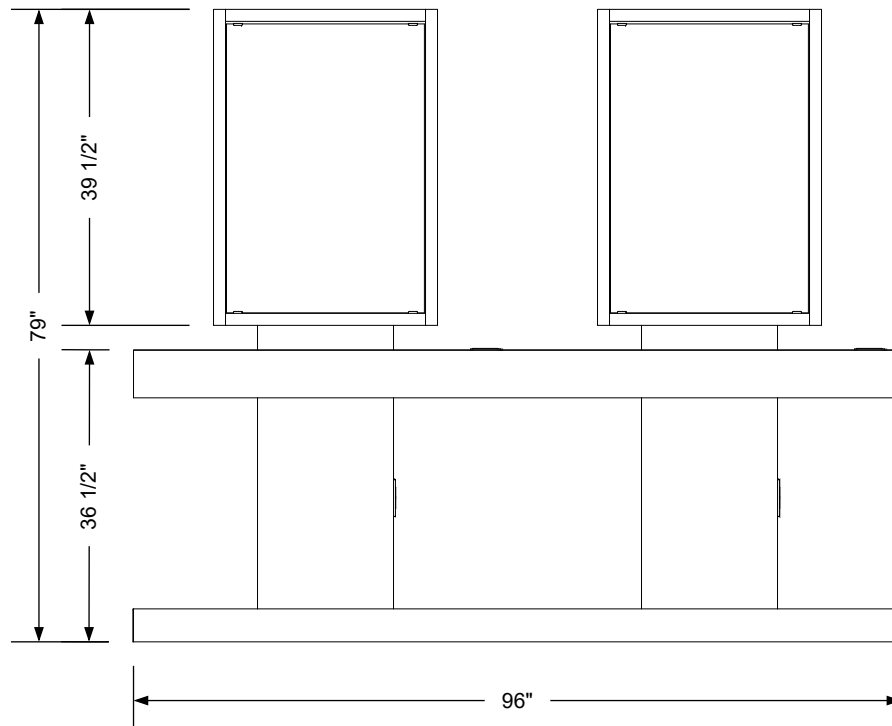
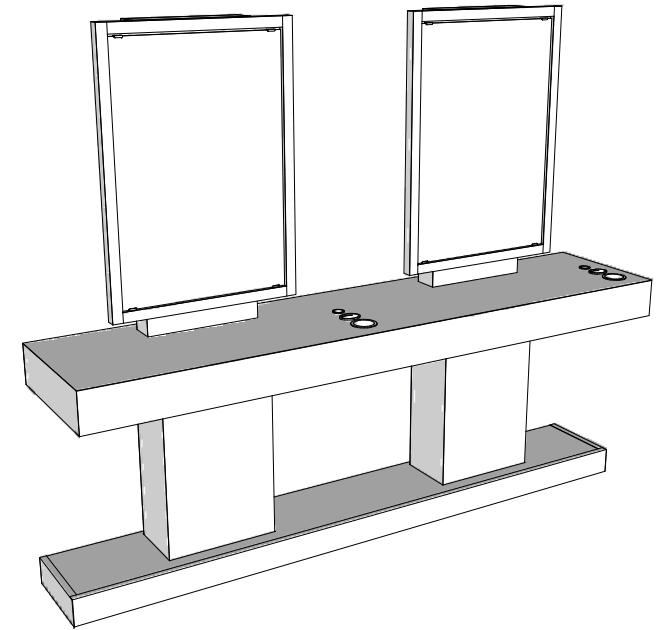
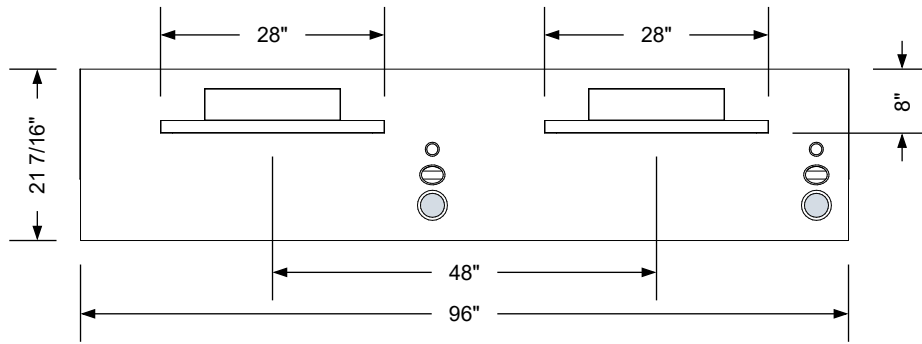
3 Years:

- Ball-Bearing Drawer Slides
- Cabinet hinges

1 Year:

- All remaining components, unless noted otherwise, are guaranteed for a period of one year from the date of purchase.






Additional Information

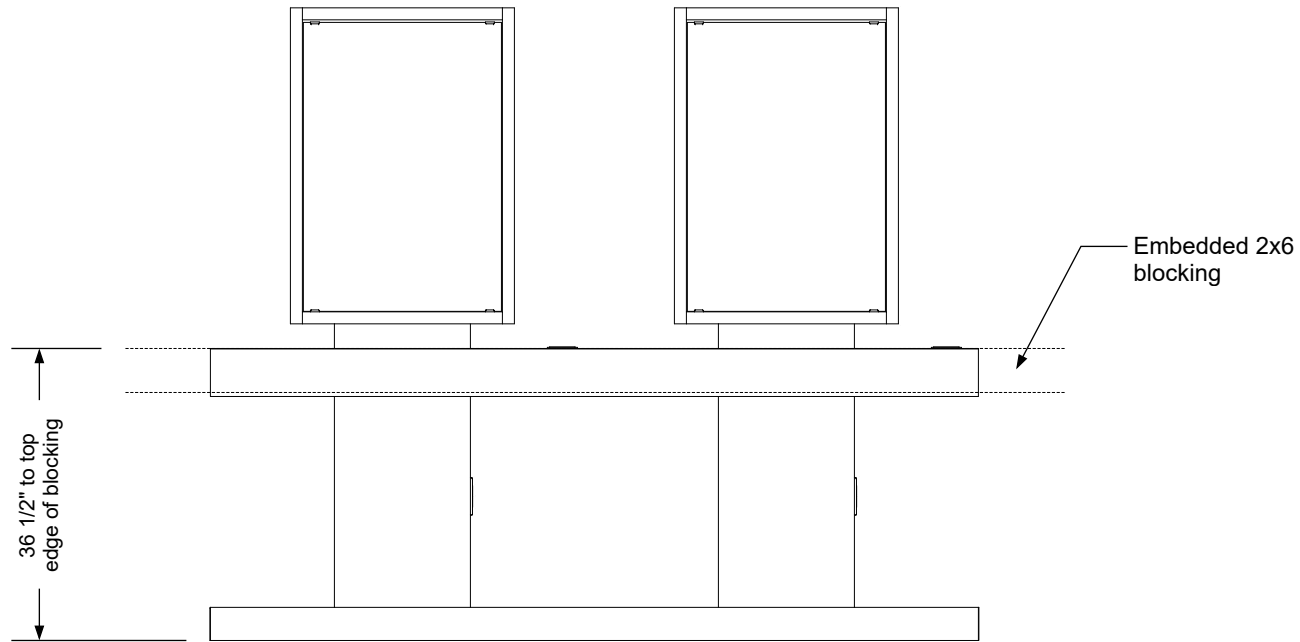
Assembly required - yes
 Electrical required - yes
 Plumbing required - no
 Wall blocking required - yes
 COM yardage/laminate usage - 147 sf
 4" h laminated plywood toe + 1/4" h glides
 Other (specify) - n/a
 Other (specify) - n/a

Specification Drawing

This **Specification Drawing** is intended for communicating the basic description, function, appearance, dimensions, features, and installation of an item as manufactured by Collins Manufacturing Company. Because this drawing does not contain project specific information such as quantities, finishes, or options, it is not an approval drawing and does not require a signature. This drawing remains the property of Collins Manufacturing Company and must not be used against the interests of Collins Manufacturing Company.

Product Information

		Collins Manufacturing 2000 Bowser Road Cookeville, TN 38506	
Name: Double Wall Station - Continuous			
Size: NTS	Part Number: 2140-96	Drawn By: Eng	
Prepared Date: 5/7/20	Revision Date: Date	Revision Number: Rev #	Sheet: 1 of 3



Wall blocking detail


Additional Information

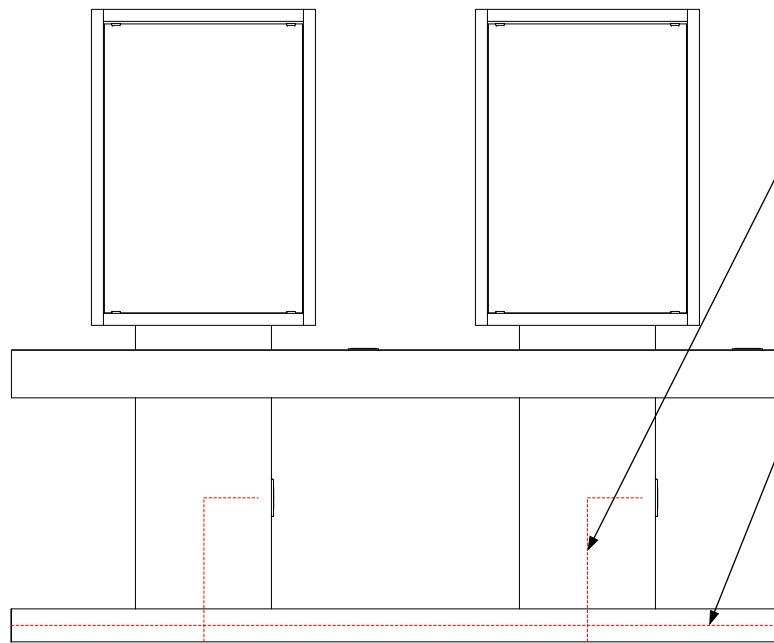
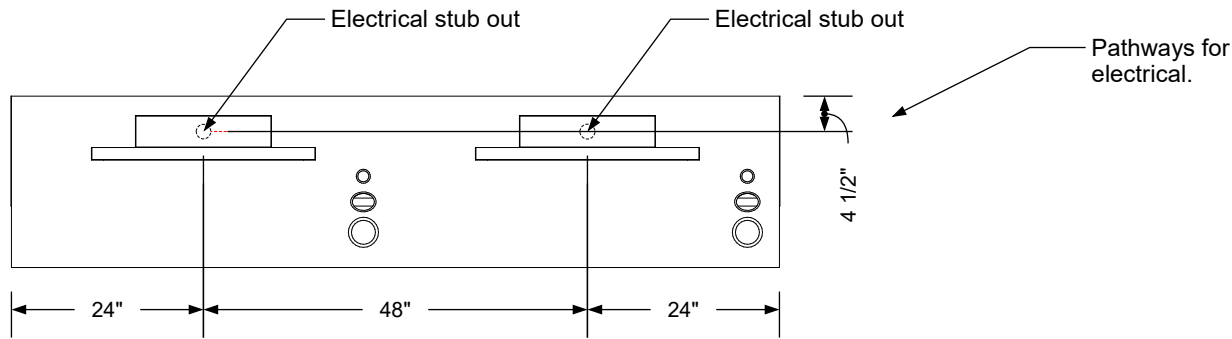
Assembly required - yes
 Electrical required - yes
 Plumbing required - no
 Wall blocking required - yes
 COM yardage/laminate usage - 147 sf
 4"h laminated plywood toe + 1/4"h glides
 Other (specify) - n/a
 Other (specify) - n/a

Specification Drawing

This **Specification Drawing** is intended for communicating the basic description, function, appearance, dimensions, features, and installation of an item as manufactured by Collins Manufacturing Company. Because this drawing does not contain project specific information such as quantities, finishes, or options, it is not an approval drawing and does not require a signature. This drawing remains the property of Collins Manufacturing Company and must not be used against the interests of Collins Manufacturing Company.

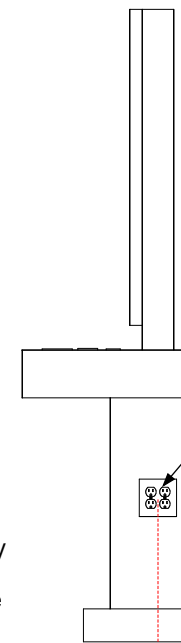
Product Information

		Collins Manufacturing 2000 Bowser Road Cookeville, TN 38506	
		Name: Double Wall Station - Continuous	
Size:	Part Number:	Drawn By:	
NTS	2140-96	Eng	
Prepared Date:	Revision Date:	Revision Number:	Sheet:
5/7/20	Date	Rev #	2 of 3



The electrician is responsible for connecting power to the fourplex outlets up from the floor along the indicated path. Provide a 20 amp, switched outlet for each student station (two per double station).

Electrical connections may be made as long as the stub outs fall within the footprint of the base platform. However, some minor modifications may be necessary. Also, electrical power may be ran through the platform bases of adjacent stations.



The station includes 20 amp fourplex outlets mounted below the countertop on the right ends of the lower columns. The tools plug into these outlets.

Electrical stub out detail


Additional Information

Assembly required - yes
 Electrical required - yes
 Plumbing required - no
 Wall blocking required - yes
 COM yardage/laminate usage - 147 sf
 4" h laminated plywood toe + 1/4" h glides
 Other (specify) - n/a
 Other (specify) - n/a

Specification Drawing

This **Specification Drawing** is intended for communicating the basic description, function, appearance, dimensions, features, and installation of an item as manufactured by Collins Manufacturing Company. Because this drawing does not contain project specific information such as quantities, finishes, or options, it is not an approval drawing and does not require a signature. This drawing remains the property of Collins Manufacturing Company and must not be used against the interests of Collins Manufacturing Company.

Product Information

		Collins Manufacturing	
		2000 Bowser Road Cookeville, TN 38506	
Name: Double Wall Station - Continuous			
Size: NTS	Part Number: 2140-96	Drawn By: Eng	
Prepared Date: 5/7/20	Revision Date: Date	Revision Number: Rev #	Sheet: 3 of 3