



WM BACKWASH BACKBAR

SKU:2210-32

Wall mounted backwash back bar cabinetry. Designed to hold both clean and soiled towels as well as provide a place for shampoo and conditioner needed for the service.

TECHNICAL INFORMATION

- 32"W x 15"D x 80"H
- Wall-mounted
- Lower storage cabinet
- Tilt out soiled towel bin
- Upper sliding storage
- Available in multiple widths

SHIPPING INFORMATION

Item generally ships via Freight(Truck) service

- Weight: 275 lbs
- Dimensions: 54"L x 32"W x 48"H

WARRANTY

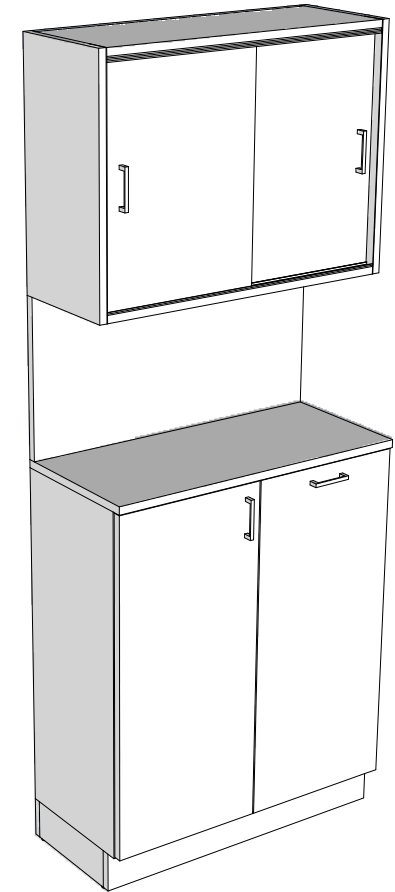
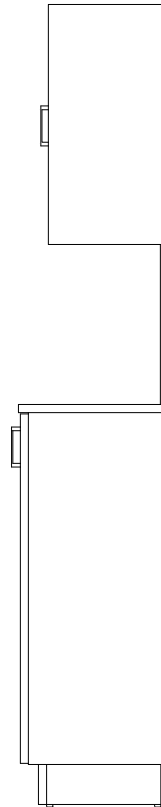
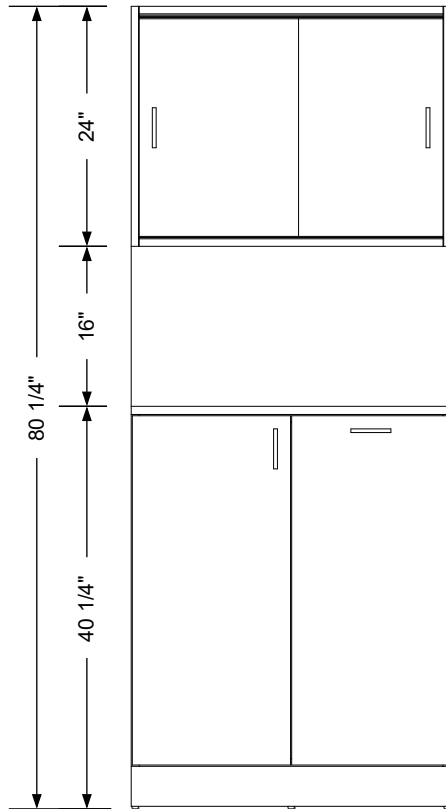
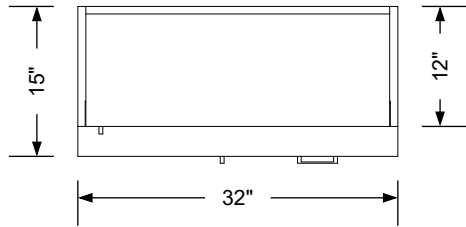
3 Years:

- Ball-Bearing Drawer Slides
- Cabinet hinges

1 Year:

- All remaining components, unless noted otherwise, are guaranteed for a period of one year from the date of purchase.






Additional Information

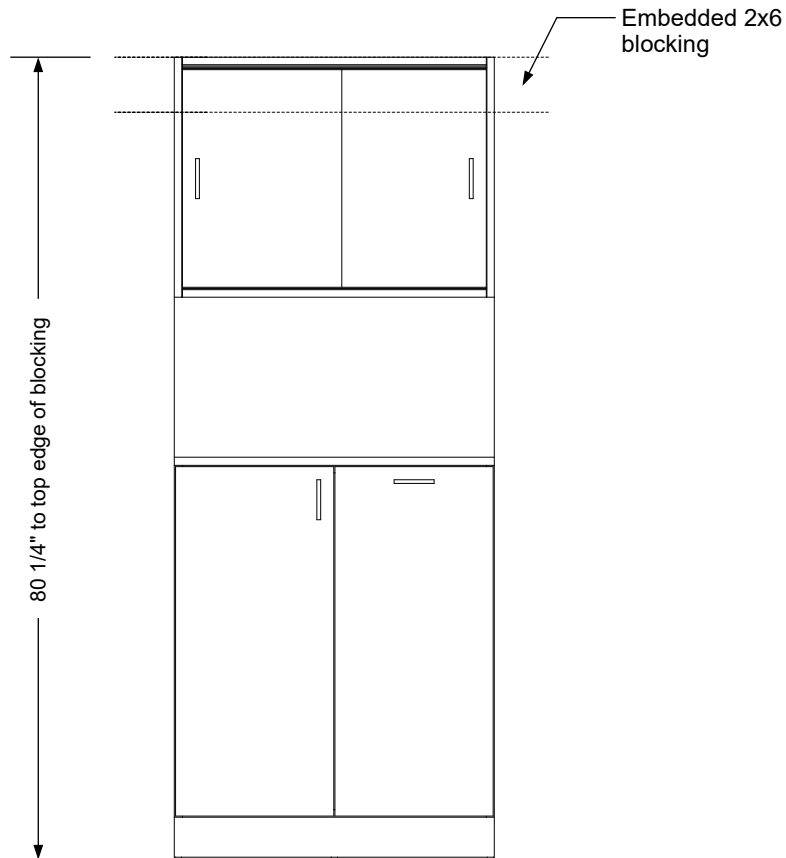
Assembly required - yes
 Electrical required - no
 Plumbing required - no
 Wall blocking required - yes
 COM yardage/laminate usage - 52 sf
 4" h laminated plywood toe + 1/4" h glides
 Other (specify) - n/a
 Other (specify) - n/a

Specification Drawing

This **Specification Drawing** is intended for communicating the basic description, function, appearance, dimensions, features, and installation of an item as manufactured by Collins Manufacturing Company. Because this drawing does not contain project specific information such as quantities, finishes, or options, it is not an approval drawing and does not require a signature. This drawing remains the property of Collins Manufacturing Company and must not be used against the interests of Collins Manufacturing Company.

Product Information

		Collins Manufacturing 2000 Bowser Road Cookeville, TN 38506	
Name: WM 32 Backwash Backbar			
Size: NTS	Part Number: 2210-32	Drawn By: Eng	
Prepared Date: 5/16/20	Revision Date: Date	Revision Number: Rev #	Sheet: 1 of 2



Wall blocking detail


Additional Information

Assembly required - yes
 Electrical required - no
 Plumbing required - no
 Wall blocking required - yes
 COM yardage/laminate usage - 52 sf
 4" h laminated plywood toe + 1/4" h glides
 Other (specify) - n/a
 Other (specify) - n/a

Specification Drawing

This **Specification Drawing** is intended for communicating the basic description, function, appearance, dimensions, features, and installation of an item as manufactured by Collins Manufacturing Company. Because this drawing does not contain project specific information such as quantities, finishes, or options, it is not an approval drawing and does not require a signature. This drawing remains the property of Collins Manufacturing Company and must not be used against the interests of Collins Manufacturing Company.

Product Information

		Collins Manufacturing 2000 Bowser Road Cookeville, TN 38506	
Name: WM 32 Backwash Backbar			
Size:	Part Number:	Drawn By:	
NTS	2210-32	Eng	
Prepared Date:	Revision Date:	Revision Number:	Sheet:
5/16/20	Date	Rev #	2 of 2