



## COL-PRO CENTER W/ SIGN

SKU:2240-101

The Colour Pro Upper Signage Section features a clean look and sleek hardware.

### TECHNICAL INFORMATION

- 101"W x 25"D x 111"H
- Stainless steel countertop, sink, and back splash
- Back-lit upper sign cabinets
- Custom plastic divider upper color storage cubbies
- Large amounts of lower storage cabinetry
- Four extra wide heavy duty storage drawers
- Unit can be custom designed to fit your space or color storage needs

### SHIPPING INFORMATION

Item generally ships via Freight(Truck) service

- Weight: 860 lbs
- Dimensions: 4 pallets

### WARRANTY

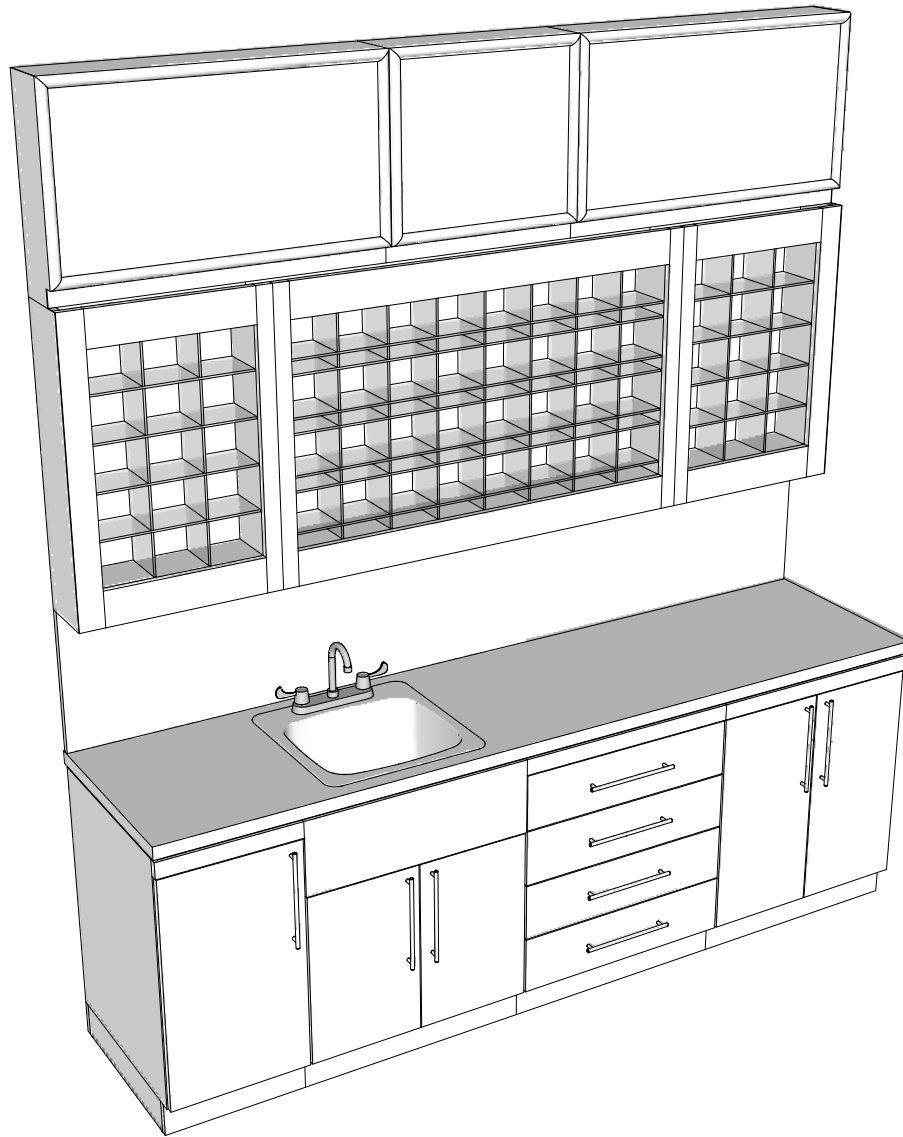
#### 3 Years:

- Ball-Bearing Drawer Slides
- Cabinet hinges

#### 1 Year:

- All remaining components, unless noted otherwise, are guaranteed for a period of one year from the date of purchase.






### Additional Information

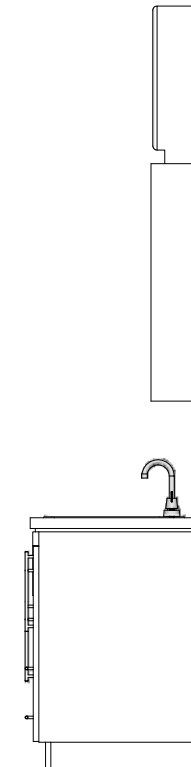
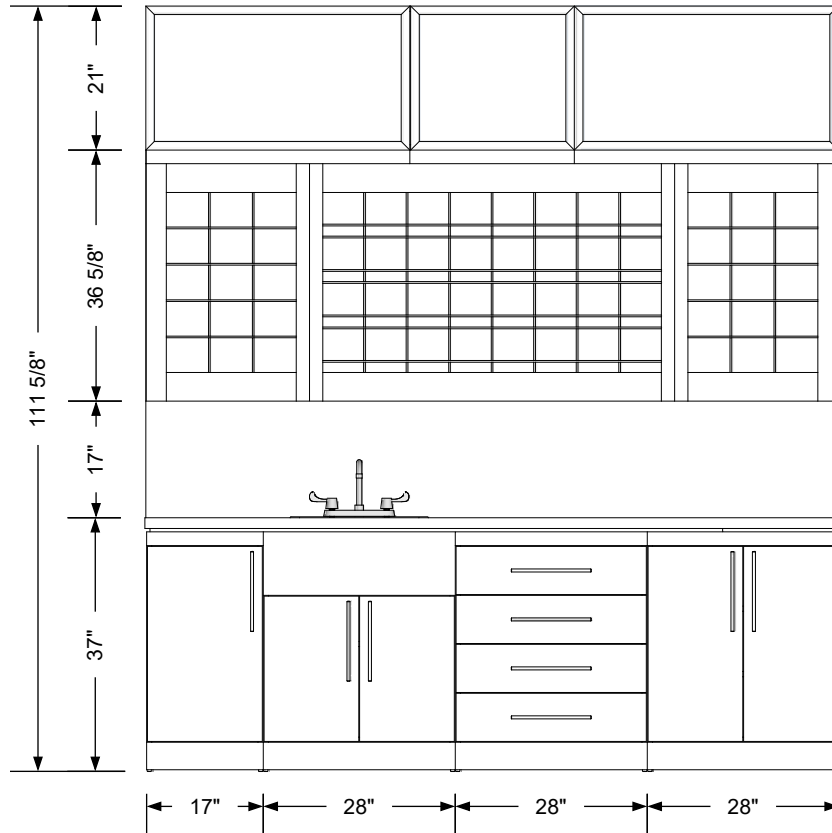
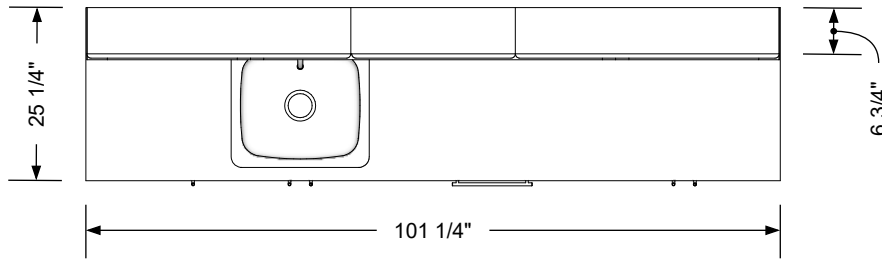
Assembly required - yes  
 Electrical required - yes  
 Plumbing required - yes  
 Wall blocking required - yes  
 COM yardage/laminate usage - 174 sf  
 4" h laminated plywood toe + 1/4" h glides  
 Other (specify) - n/a  
 Other (specify) - n/a

### Specification Drawing

This **Specification Drawing** is intended for communicating the basic description, function, appearance, dimensions, features, and installation of an item as manufactured by Collins Manufacturing Company. Because this drawing does not contain project specific information such as quantities, finishes, or options, it is not an approval drawing and does not require a signature. This drawing remains the property of Collins Manufacturing Company and must not be used against the interests of Collins Manufacturing Company.

### Product Information

		Collins Manufacturing 2000 Bowser Road Cookeville, TN 38506	
		Name: <b>Col-Pro Color Center with Sign</b>	
Size:	Part Number:	Drawn By:	
NTS	2240-101	Eng	
Prepared Date:	Revision Date:	Revision Number:	Sheet:
5/28/20	Date	Rev #	1 of 4




### Additional Information

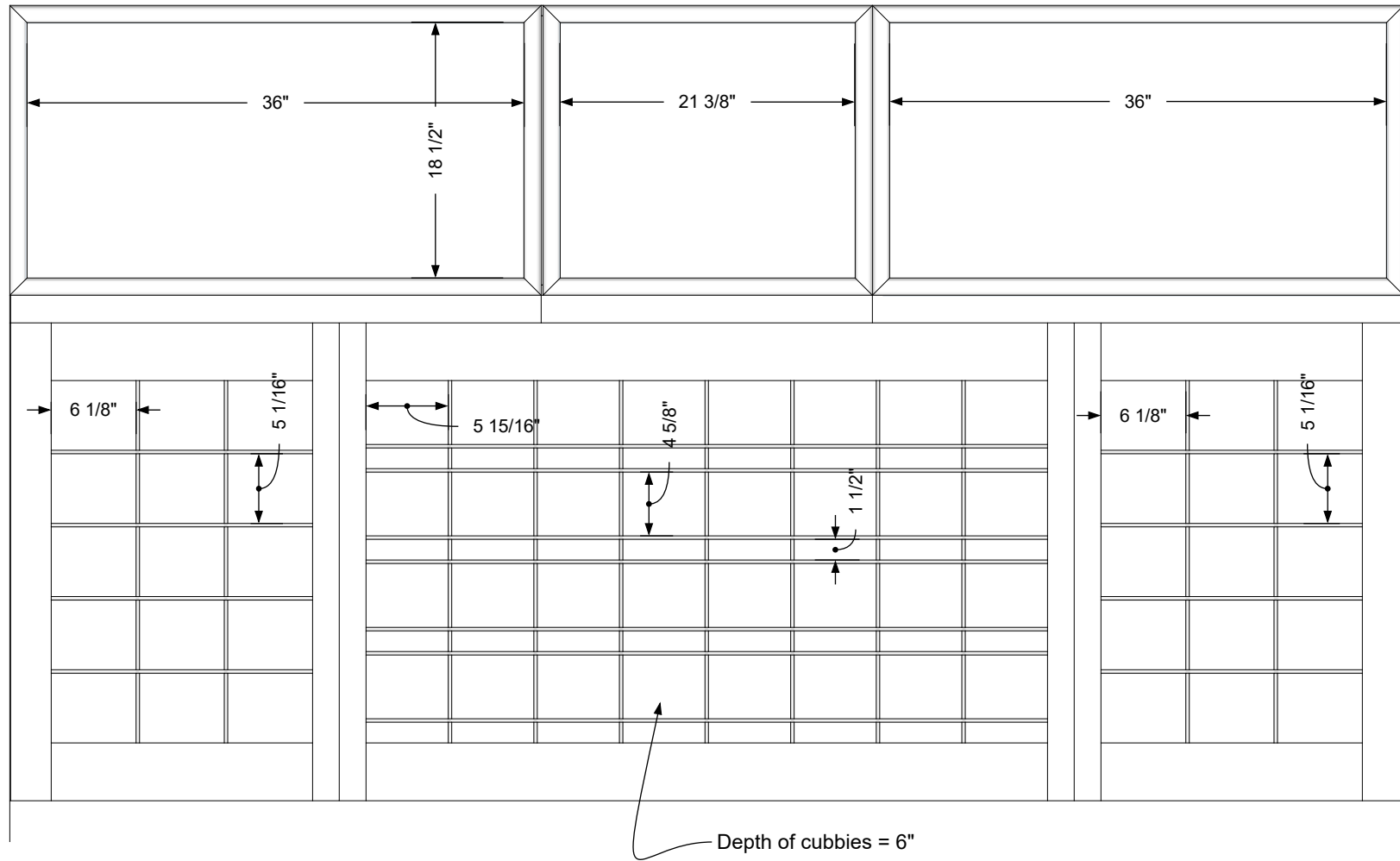
Assembly required - yes  
 Electrical required - yes  
 Plumbing required - yes  
 Wall blocking required - yes  
 COM yardage/laminate usage - 174 sf  
 4" h laminated plywood toe + 1/4" h glides  
 Other (specify) - n/a  
 Other (specify) - n/a

### Specification Drawing

This **Specification Drawing** is intended for communicating the basic description, function, appearance, dimensions, features, and installation of an item as manufactured by Collins Manufacturing Company. Because this drawing does not contain project specific information such as quantities, finishes, or options, it is not an approval drawing and does not require a signature. This drawing remains the property of Collins Manufacturing Company and must not be used against the interests of Collins Manufacturing Company.

### Product Information

		Collins Manufacturing 2000 Bowser Road Cookeville, TN 38506	
Name: Col-Pro Color Center with Sign			
Size: NTS	Part Number: 2240-101	Drawn By: Eng	
Prepared Date: 5/28/20	Revision Date: Date	Revision Number: Rev #	Sheet: 2 of 4



**Cubby and sign panels details**


**Additional Information**

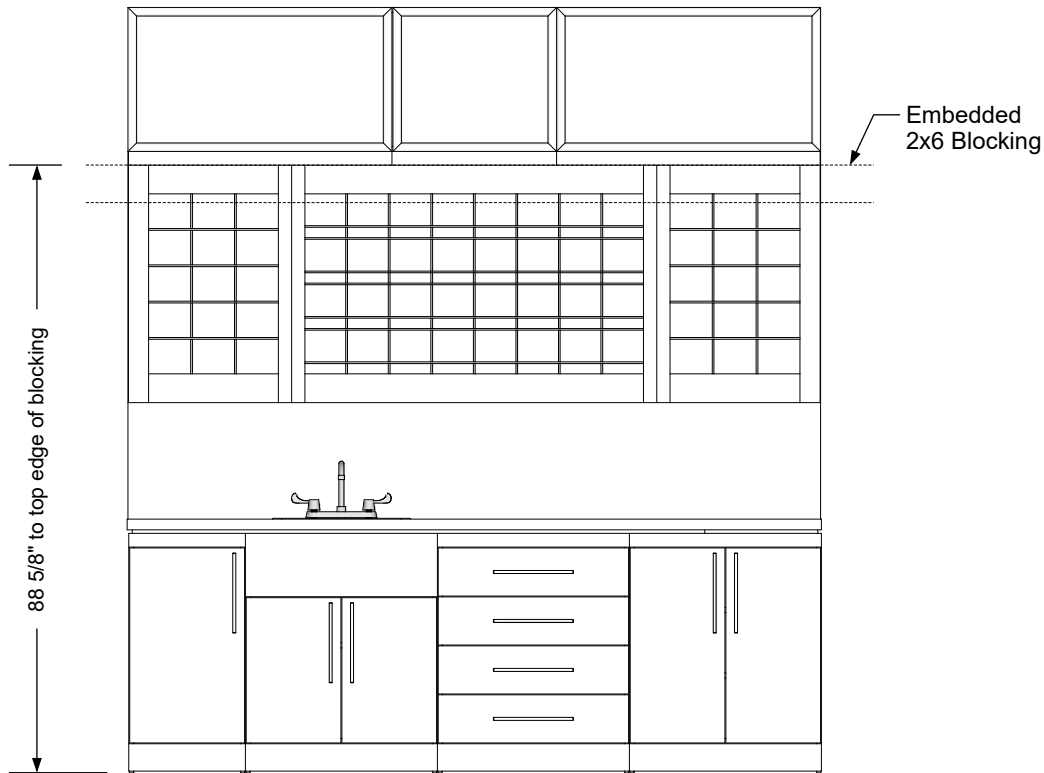
Assembly required - yes  
 Electrical required - yes  
 Plumbing required - yes  
 Wall blocking required - yes  
 COM yardage/laminate usage - 174 sf  
 4" h laminated plywood toe + 1/4" h glides  
 Other (specify) - n/a  
 Other (specify) - n/a

**Specification Drawing**

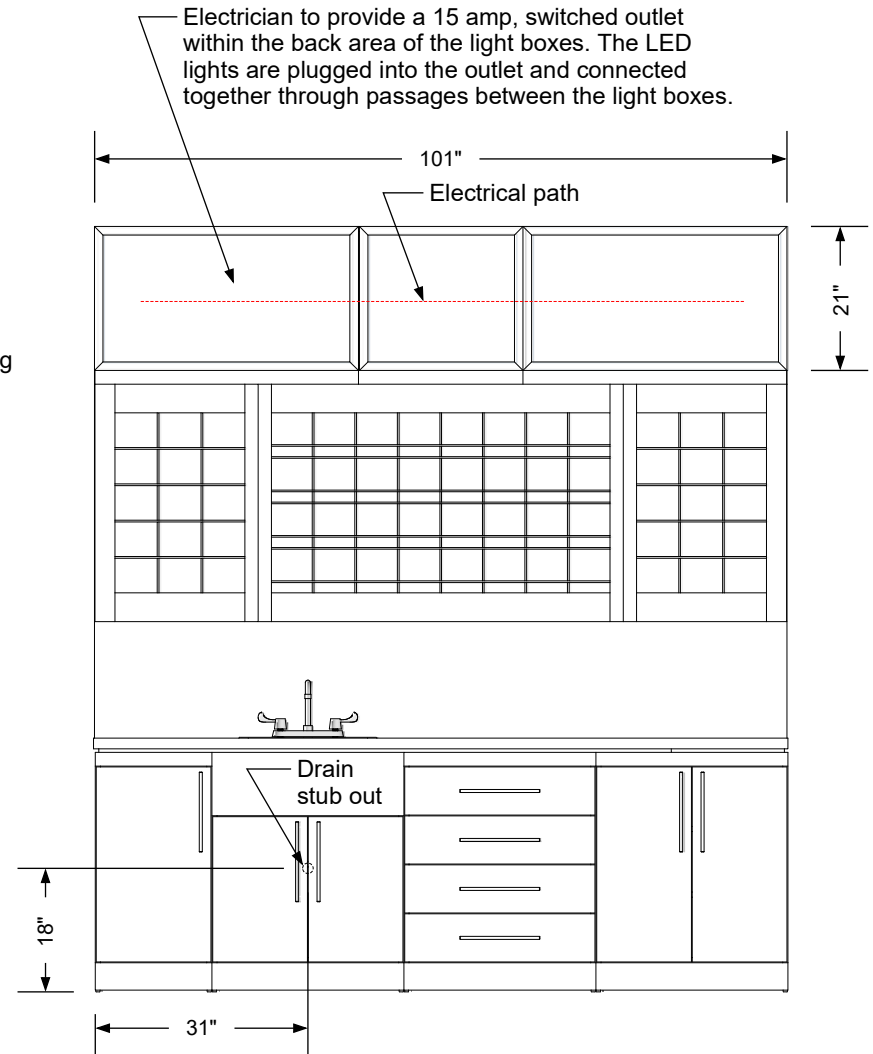
This **Specification Drawing** is intended for communicating the basic description, function, appearance, dimensions, features, and installation of an item as manufactured by Collins Manufacturing Company. Because this drawing does not contain project specific information such as quantities, finishes, or options, it is not an approval drawing and does not require a signature. This drawing remains the property of Collins Manufacturing Company and must not be used against the interests of Collins Manufacturing Company.

**Product Information**

		Collins Manufacturing 2000 Bowser Road Cookeville, TN 38506	
		Name: <b>Col-Pro Color Center with Sign</b>	
Size:	Part Number:	Drawn By:	
<b>NTS</b>	<b>2240-101</b>	<b>Eng</b>	
Prepared Date:	Revision Date:	Revision Number:	Sheet:
<b>5/28/20</b>	<b>Date</b>	<b>Rev #</b>	<b>3 of 4</b>



**Blocking detail**



**Plumbing and electrical stub out detail**


**Additional Information**

Assembly required - yes  
 Electrical required - yes  
 Plumbing required - yes  
 Wall blocking required - yes  
 COM yardage/laminate usage - 174 sf  
 4"h laminated plywood toe + 1/4"h glides  
 Other (specify) - n/a  
 Other (specify) - n/a

**Specification Drawing**

This **Specification Drawing** is intended for communicating the basic description, function, appearance, dimensions, features, and installation of an item as manufactured by Collins Manufacturing Company. Because this drawing does not contain project specific information such as quantities, finishes, or options, it is not an approval drawing and does not require a signature. This drawing remains the property of Collins Manufacturing Company and must not be used against the interests of Collins Manufacturing Company.

**Product Information**

		Collins Manufacturing 2000 Bowser Road Cookeville, TN 38506	
		Name: <b>Col-Pro Color Center with Sign</b>	
Size: <b>NTS</b>	Part Number: <b>2240-101</b>	Drawn By: <b>Eng</b>	
Prepared Date: <b>5/28/20</b>	Revision Date: <b>Date</b>	Revision Number: <b>Rev #</b>	Sheet: <b>4 of 4</b>