



DOUBLE THEORY MANNEQUIN STATION W/ STORAGE FOR 2 STUDENTS

SKU:2462-36



This Mannequin Station is a perfect addition to any salon school. The clamps hold your mannequins in place at an ergonomic height while you work, and the locking storage cabinets will keep your tools safe and accessible.

*3 single units shown side-by-side

TECHNICAL INFORMATION

- 36"W x 38"D x 34"H + 6" splash
- Featuring radius corners on work surface
- Two mannequin clamp supports
- Fourplexes with electrical chase running through backsplash
- Four lockable storage cabinets with adjustable shelves hasp lock mechanism
- 270 degree hinges on doors
- Available in 36" or 40" lengths

SHIPPING INFORMATION

Item generally ships via Freight(Truck) service

- Weight: 350 lbs
- Dimensions: 48"L x 42"W x 46"H

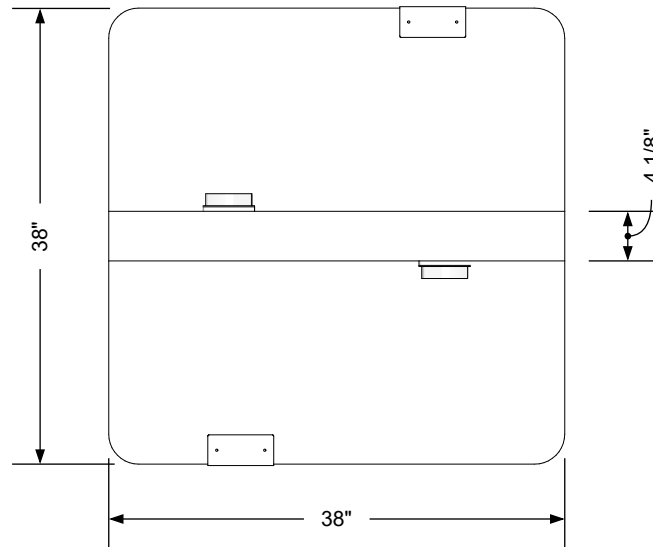
WARRANTY

3 Years:

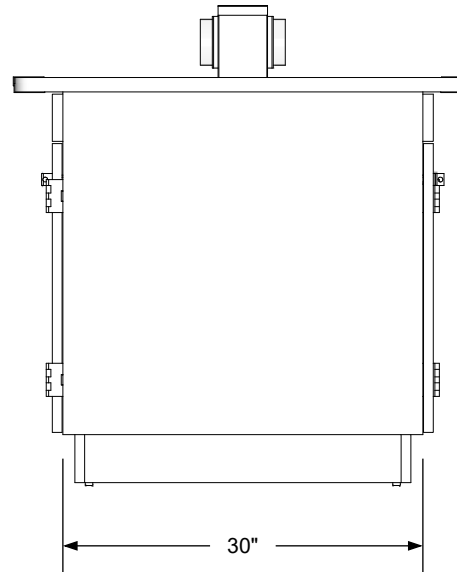
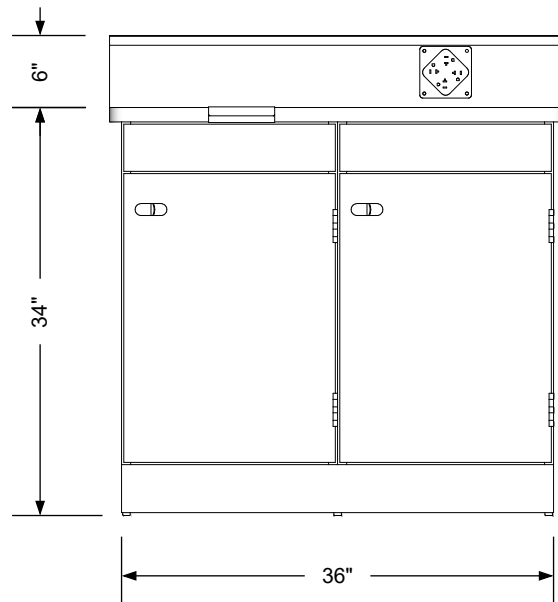
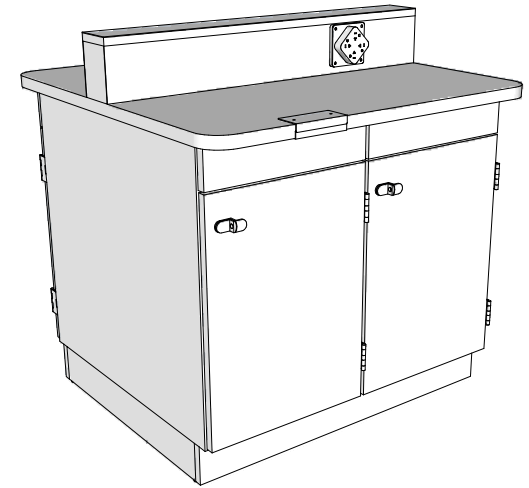
- Ball-Bearing Drawer Slides
- Cabinet hinges

1 Year:

- All remaining components, unless noted otherwise, are guaranteed for a period of one year from the date of purchase.



Note:
Multiple units may be jointed end to end to create longer, linear arrangements. In those situations, the countertops are made into longer sections to eliminate seams. The student spacing will remain unchanged.




Additional Information

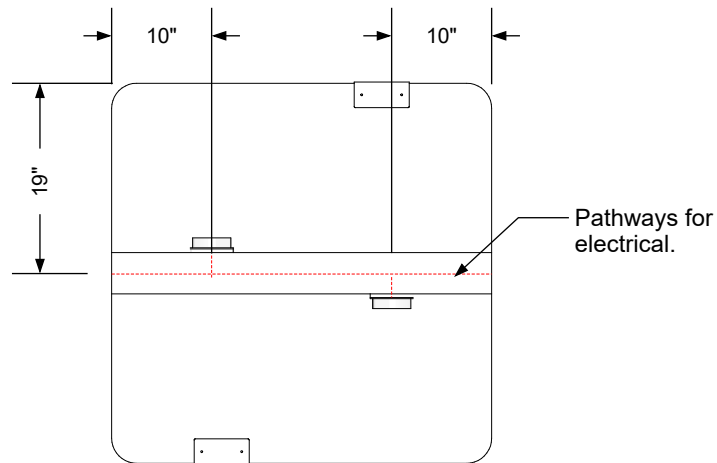
Assembly required - yes
Electrical required - yes
Plumbing required - no
Wall blocking required - no
COM yardage/laminate usage - 82 sf
4"h laminated plywood toe + 1/4"h glides
Other (specify) - n/a
Other (specify) - n/a

Specification Drawing

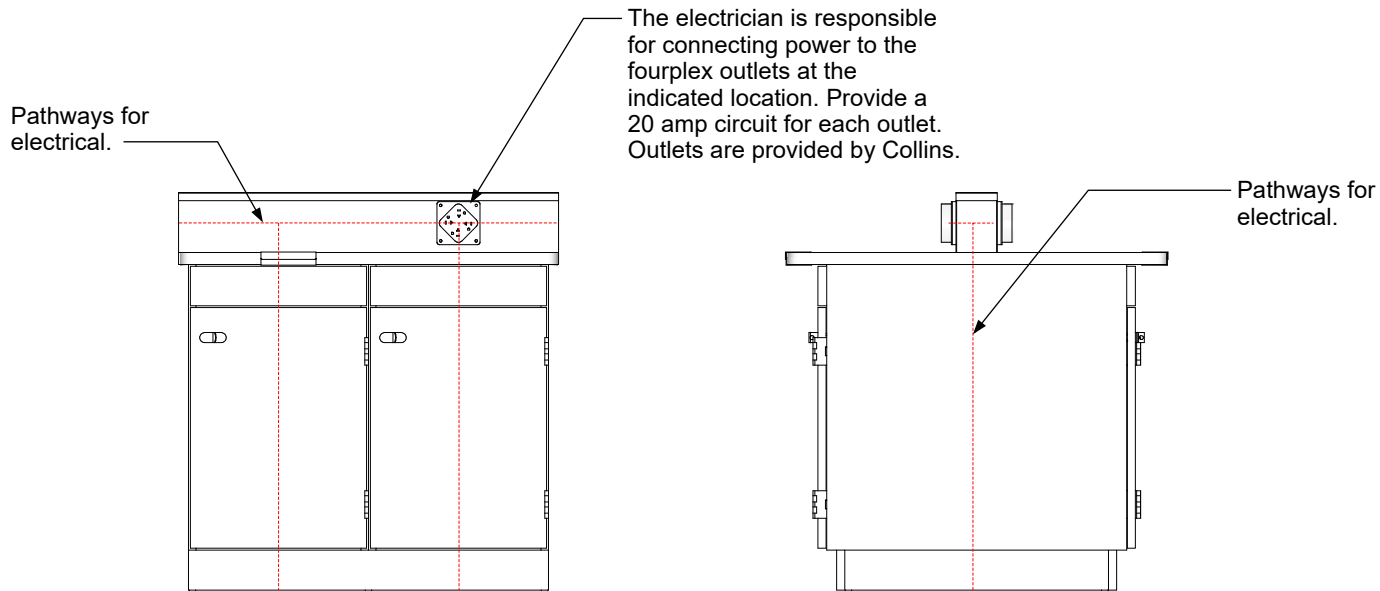
This **Specification Drawing** is intended for communicating the basic description, function, appearance, dimensions, features, and installation of an item as manufactured by Collins Manufacturing Company. Because this drawing does not contain project specific information such as quantities, finishes, or options, it is not an approval drawing and does not require a signature. This drawing remains the property of Collins Manufacturing Company and must not be used against the interests of Collins Manufacturing Company.

Product Information

		Collins Manufacturing 2000 Bowser Road Cookeville, TN 38506	
Name: Double Theory Mannequin Station w/ Storage			
Size: NTS	Part Number: 2462-36		Drawn By: Eng
Prepared Date: 6/9/20	Revision Date: Date	Revision Number: Rev #	Sheet: 1 of 2



Note:
Electrical power may be stubbed up from the floor in the location shown or run through the backsplash for linear arrangements. The top cap of the backsplash may be removed for additional access to the outlets and power. Also note that there is a hollow cavity for electrical between the front and back storage areas.



Electrical stub out detail


Additional Information

Assembly required - yes
Electrical required - yes
Plumbing required - no
Wall blocking required - no
COM yardage/laminate usage - 82 sf
4"h laminated plywood toe + 1/4"h glides
Other (specify) - n/a
Other (specify) - n/a

Specification Drawing

This **Specification Drawing** is intended for communicating the basic description, function, appearance, dimensions, features, and installation of an item as manufactured by Collins Manufacturing Company. Because this drawing does not contain project specific information such as quantities, finishes, or options, it is not an approval drawing and does not require a signature. This drawing remains the property of Collins Manufacturing Company and must not be used against the interests of Collins Manufacturing Company.

Product Information

 Collins Manufacturing 2000 Bowser Road Cookeville, TN 38506			
Name: Double Theory Mannequin Station w/ Storage			
Size: NTS	Part Number: 2462-36	Drawn By: Eng	
Prepared Date: 6/9/20	Revision Date: Date	Revision Number: Rev #	Sheet: 2 of 2