



## CURRICULUM CABINET

SKU:2473-36



Keep all your curriculum organized and secure with this durable, well-made Curriculum Cabinet. The beautifully crafted, lockable doors open wide to reveal a spacious interior that can hold a variety of items and two large reinforced drawers. Designed to fit into any classroom and complete any school décor.

### TECHNICAL INFORMATION

---

- 36"W x 19"D x 72"H
- Two locking cabinets
- Two locking large reinforced drawers

### SHIPPING INFORMATION

---

Item generally ships via Freight(Truck) service

- Weight: 350 lbs
- Dimensions: 48"L x 32"W x 80"H

### WARRANTY

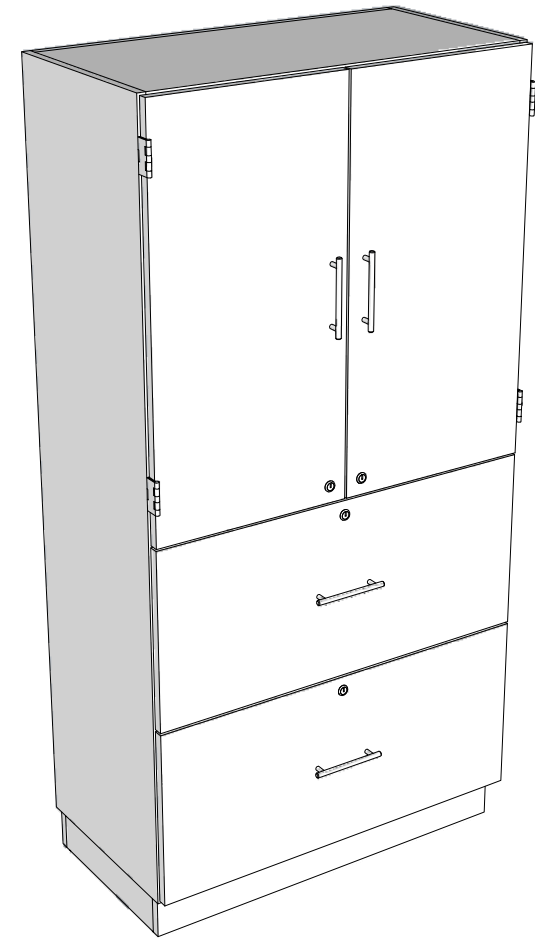
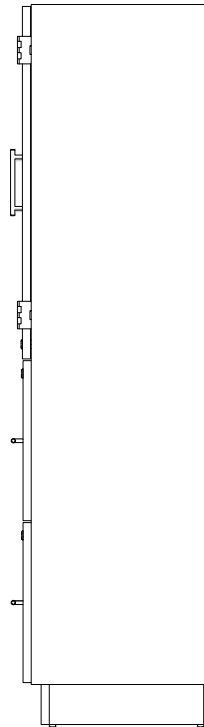
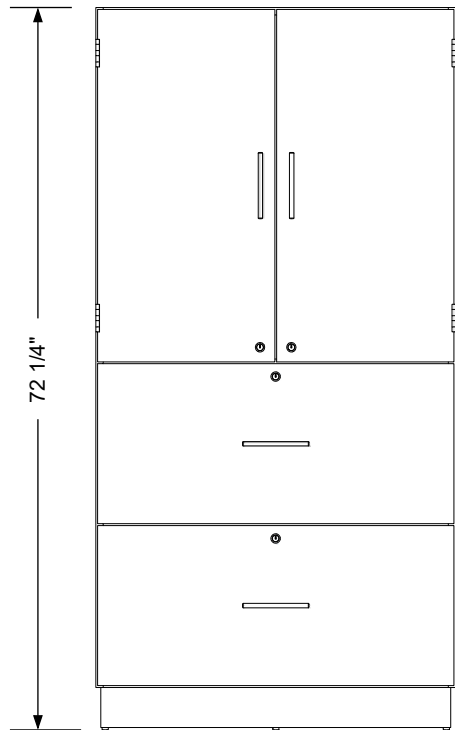
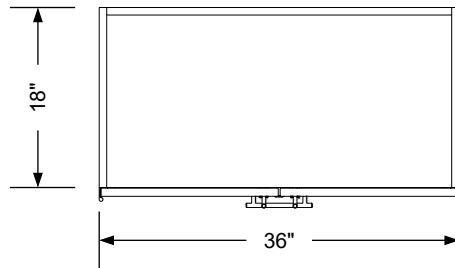
---

#### 3 Years:

- Ball-Bearing Drawer Slides
- Cabinet hinges

#### 1 Year:

- All remaining components, unless noted otherwise, are guaranteed for a period of one year from the date of purchase.




## Additional Information

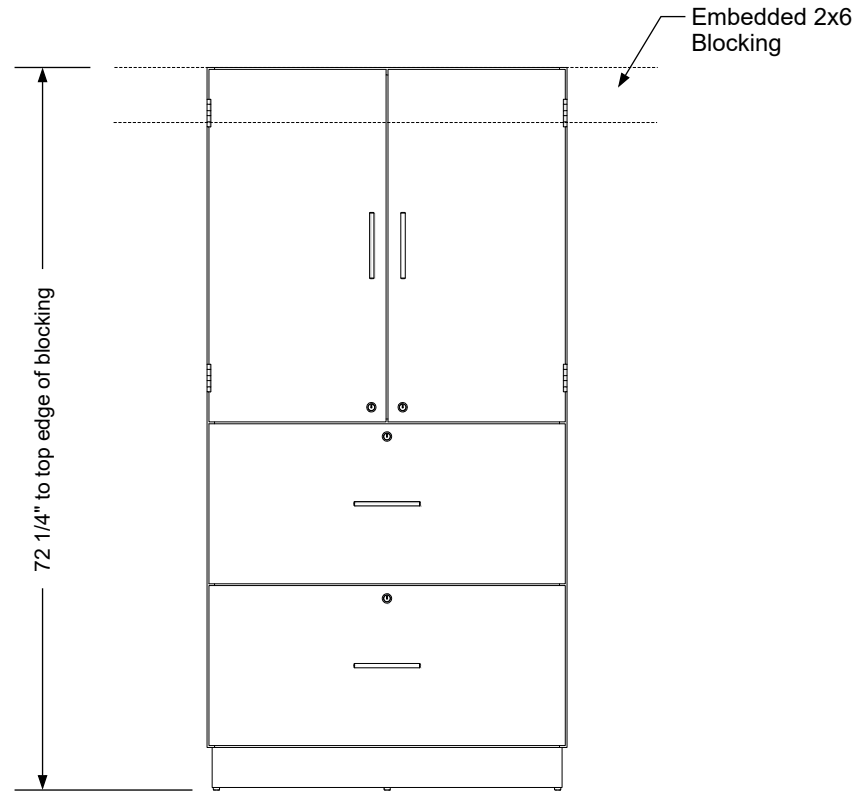
Assembly required - no  
 Electrical required - no  
 Plumbing required - no  
 Wall blocking required - yes  
 COM yardage/laminate usage - 59 sf  
 4"h laminated plywood toe + 1/4"h glides  
 Other (specify) - n/a  
 Other (specify) - n/a

## Specification Drawing

This **Specification Drawing** is intended for communicating the basic description, function, appearance, dimensions, features, and installation of an item as manufactured by Collins Manufacturing Company. Because this drawing does not contain project specific information such as quantities, finishes, or options, it is not an approval drawing and does not require a signature. This drawing remains the property of Collins Manufacturing Company and must not be used against the interests of Collins Manufacturing Company.

## Product Information

 Collins Manufacturing 2000 Bowser Road Cookeville, TN 38506			
Name: Curriculum Cabinet			
Size: NTS	Part Number: 2473-36	Drawn By: Eng	
Prepared Date: 7/6/20	Revision Date: Date	Revision Number: Rev #	Sheet: 1 of 2



### Wall blocking detail


#### Additional Information

Assembly required - no  
 Electrical required - no  
 Plumbing required - no  
 Wall blocking required - yes  
 COM yardage/laminate usage - 59 sf  
 4"h laminated plywood toe + 1/4"h glides  
 Other (specify) - n/a  
 Other (specify) - n/a

#### Specification Drawing

This **Specification Drawing** is intended for communicating the basic description, function, appearance, dimensions, features, and installation of an item as manufactured by Collins Manufacturing Company. Because this drawing does not contain project specific information such as quantities, finishes, or options, it is not an approval drawing and does not require a signature. This drawing remains the property of Collins Manufacturing Company and must not be used against the interests of Collins Manufacturing Company.

#### Product Information

		Collins Manufacturing 2000 Bowser Road Cookeville, TN 38506	
Name: Curriculum Cabinet			
Size: NTS	Part Number: 2473-36		Drawn By: Eng
Prepared Date: 7/6/20	Revision Date: Date	Revision Number: Rev #	Sheet: 2 of 2