



WASTE/BROOM CABINET

SKU:2671-36

This Waste/Broom Cabinet is the perfect solution for storing your brooms, mops and other cleaning supplies. Both the tall cabinet and upper supply cabinet feature a sturdy locking door, keeping supplies secure when not in use.

TECHNICAL INFORMATION

- 36"W x 16"D x 72"H
- Tall locking cabinet on one side
- Locking cabinet and waste cabinet on the other side

SHIPPING INFORMATION

Item generally ships via Freight(Truck) service

- Weight: 300 lbs
- Dimensions: 40"L x 32"W x 80"H

WARRANTY

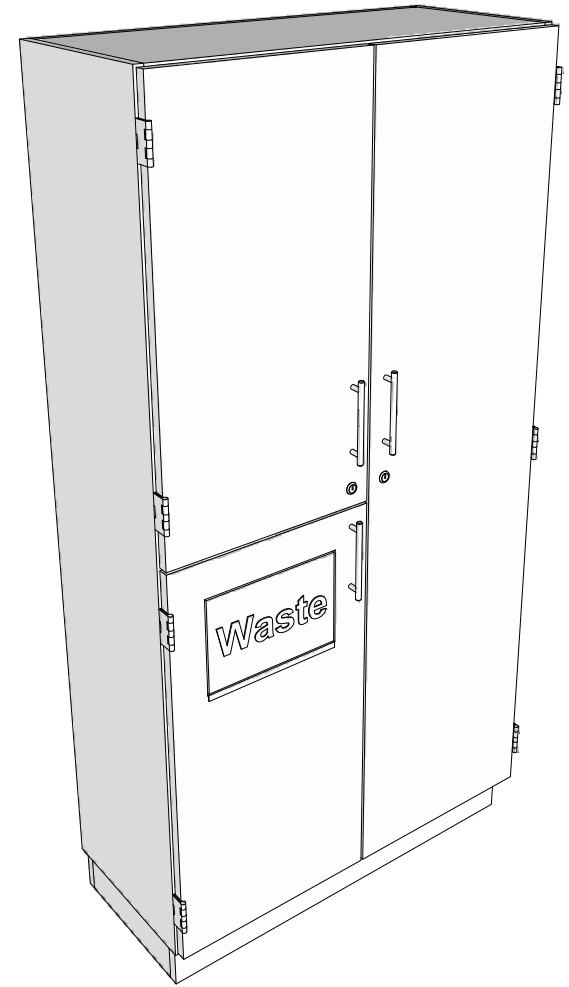
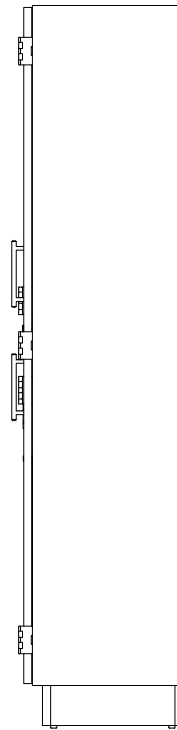
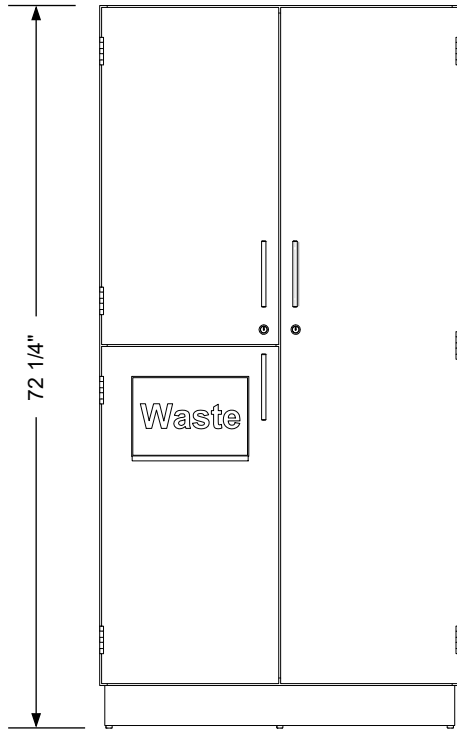
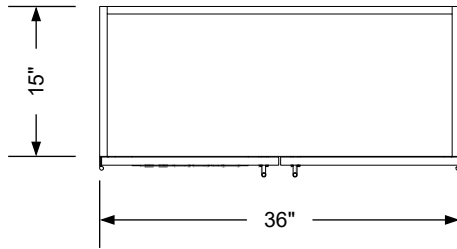
3 Years:

- Ball-Bearing Drawer Slides
- Cabinet hinges

1 Year:

- All remaining components, unless noted otherwise, are guaranteed for a period of one year from the date of purchase.





Additional Information

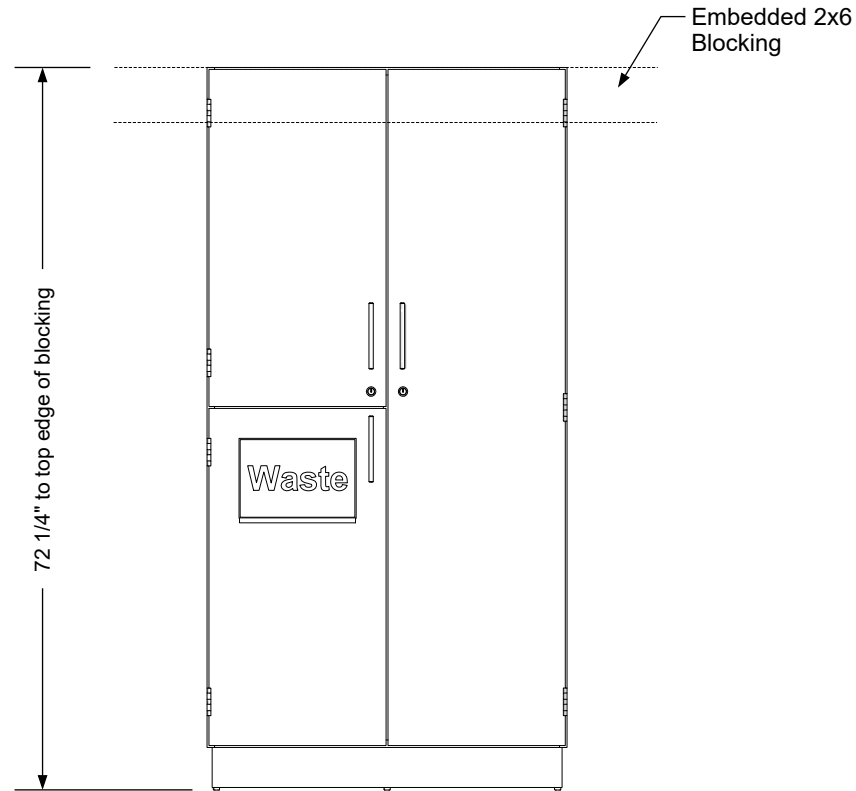
Assembly required - no
 Electrical required - no
 Plumbing required - no
 Wall blocking required - yes
 COM yardage/laminate usage - 54 sf
 4" h laminated plywood toe + 1/4" h glides
 Other (specify) - n/a
 Other (specify) - n/a

Specification Drawing

This **Specification Drawing** is intended for communicating the basic description, function, appearance, dimensions, features, and installation of an item as manufactured by Collins Manufacturing Company. Because this drawing does not contain project specific information such as quantities, finishes, or options, it is not an approval drawing and does not require a signature. This drawing remains the property of Collins Manufacturing Company and must not be used against the interests of Collins Manufacturing Company.

Product Information

		Collins Manufacturing 2000 Bowser Road Cookeville, TN 38506	
Name: Waste/Broom Cabinet			
Size: NTS	Part Number: 2671-36	Drawn By: Eng	
Prepared Date: 7/7/20	Revision Date: Date	Revision Number: Rev #	Sheet: 1 of 2



Wall blocking detail


Additional Information

Assembly required - no
 Electrical required - no
 Plumbing required - no
 Wall blocking required - yes
 COM yardage/laminate usage - 54 sf
 4"h laminated plywood toe + 1/4"h glides
 Other (specify) - n/a
 Other (specify) - n/a

Specification Drawing

This **Specification Drawing** is intended for communicating the basic description, function, appearance, dimensions, features, and installation of an item as manufactured by Collins Manufacturing Company. Because this drawing does not contain project specific information such as quantities, finishes, or options, it is not an approval drawing and does not require a signature. This drawing remains the property of Collins Manufacturing Company and must not be used against the interests of Collins Manufacturing Company.

Product Information

		Collins Manufacturing 2000 Bowser Road Cookeville, TN 38506	
Name: Waste/Broom Cabinet			
Size: NTS	Part Number: 2671-36	Drawn By: Eng	
Prepared Date: 7/7/20	Revision Date: Date	Revision Number: Rev #	Sheet: 2 of 2