



# NIRVANA COMFORT WASH

SKU:2880



Help your client find the state of perfect happiness with Collins new Nirvana Lay-In Style Comfort Wash! All-Electric Shampoo System with motorized leg rest and motorized front to back adjustability. Collins comfort wash series are the only shampoo systems in the market that provide a motorized leg rest that travels with the seat when adjusting for your clients height. The Nirvana features Collins CB79 lay-in shampoo bowl with headrest pad built into the center of the shampoo bowl providing for the ultimate client comfort during a shampoo service.

Specify shampoo bowl color, laminated chassis color, and upholstery color when ordering. Solid surface top available in Designer White only.

## TECHNICAL INFORMATION

- Width between the arms 22 1/2"
- Width outside the arms 30"
- Height to the top of the back 29"
- Height to top of seat 22"
- Depth of seat 19"
- Overall depth 56"
- Overall depth w/ footrest & chair completely extended 81"
- UPC listed Shampoo bowl and components
- 2Amps - Power requirement that plugs into standard 120V receptacle

## SHIPPING INFORMATION

This item ships via LTL service with a lift gate. 36"W x 60"D x 48"H

## WARRANTY

### 3 Year:

- Molded urethane arms
- Cabinet drawer-slides

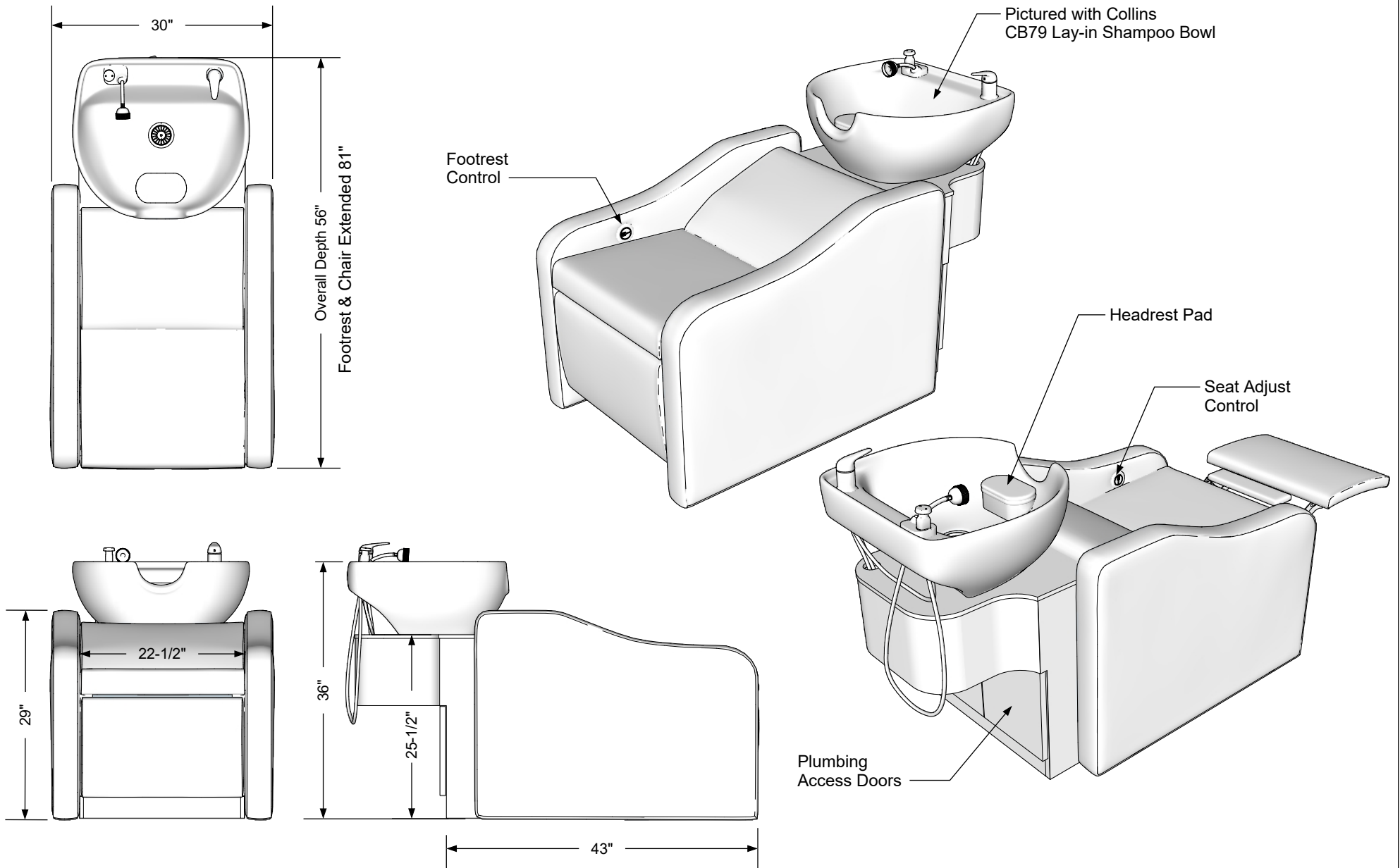
### 2 Year:

- All Shampoo Bowls
- Vacuum breakers

### 1 Year:

- All remaining components, unless noted otherwise






**Additional Information**

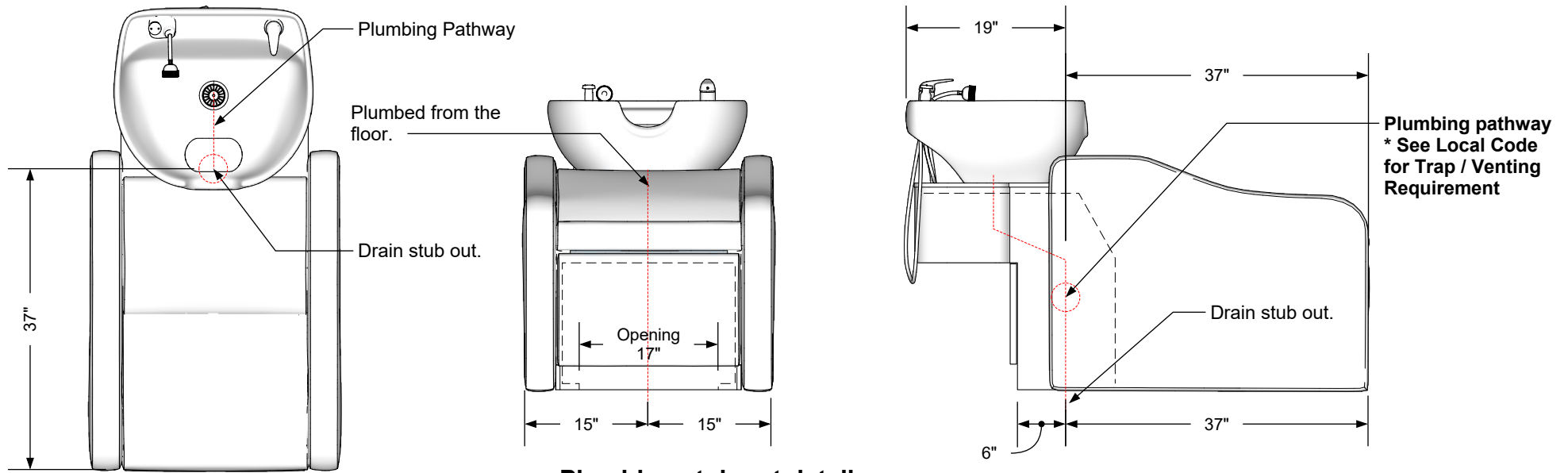
Assembly required - yes  
 Electrical required - yes  
 Plumbing required - yes  
 Wall blocking required - no  
 Other (specify) - n/a  
 Other (specify) - n/a  
 Other (specify) - n/a  
 Other (specify) - n/a

**Specification Drawing**

This **Specification Drawing** is intended for communicating the basic description, function, appearance, dimensions, features, and installation of an item as manufactured by Collins Manufacturing Company. Because this drawing does not contain project specific information such as quantities, finishes, or options, it is not an approval drawing and does not require a signature. This drawing remains the property of Collins Manufacturing Company and must not be used against the interests of Collins Manufacturing Company.

**Product Information**

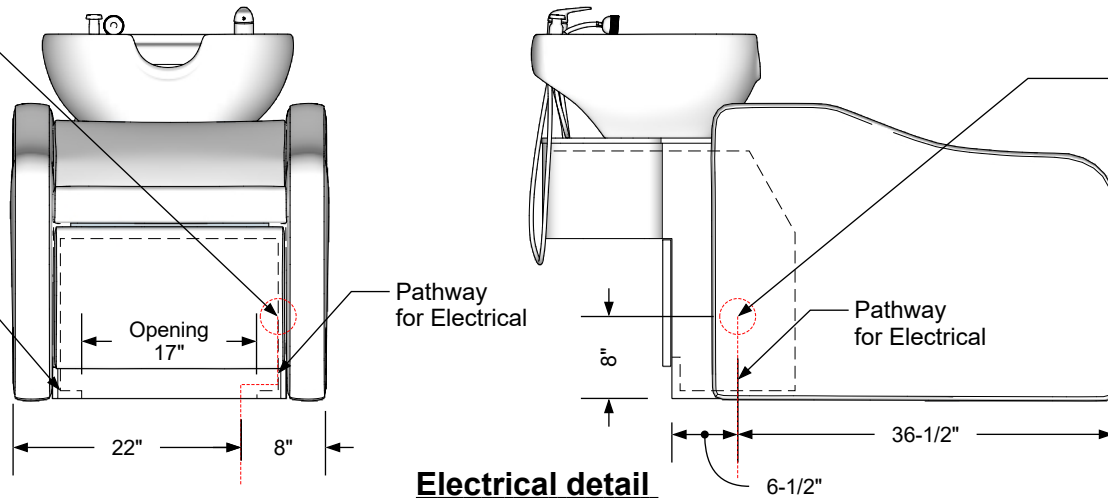
		Collins Manufacturing 2000 Bowser Road Cookeville, TN 38506	
Name: Nirvana Comfort Wash			
Size: NTS	Part Number: 2880	Drawn By: Eng	
Prepared Date: 2/15/21	Revision Date: 2/18/21	Revision Number: Rev 1	Sheet: 1 of 3



**Plumbing stub out detail**  
\*Please Consult Local Codes

GFI Surface Mounted Outlet Recommended  
\*See Local Codes

Floor Anchoring Wings Inside Bowl Cabinet



**Electrical detail**  
\*Please Consult Local Codes

**Additional Information**

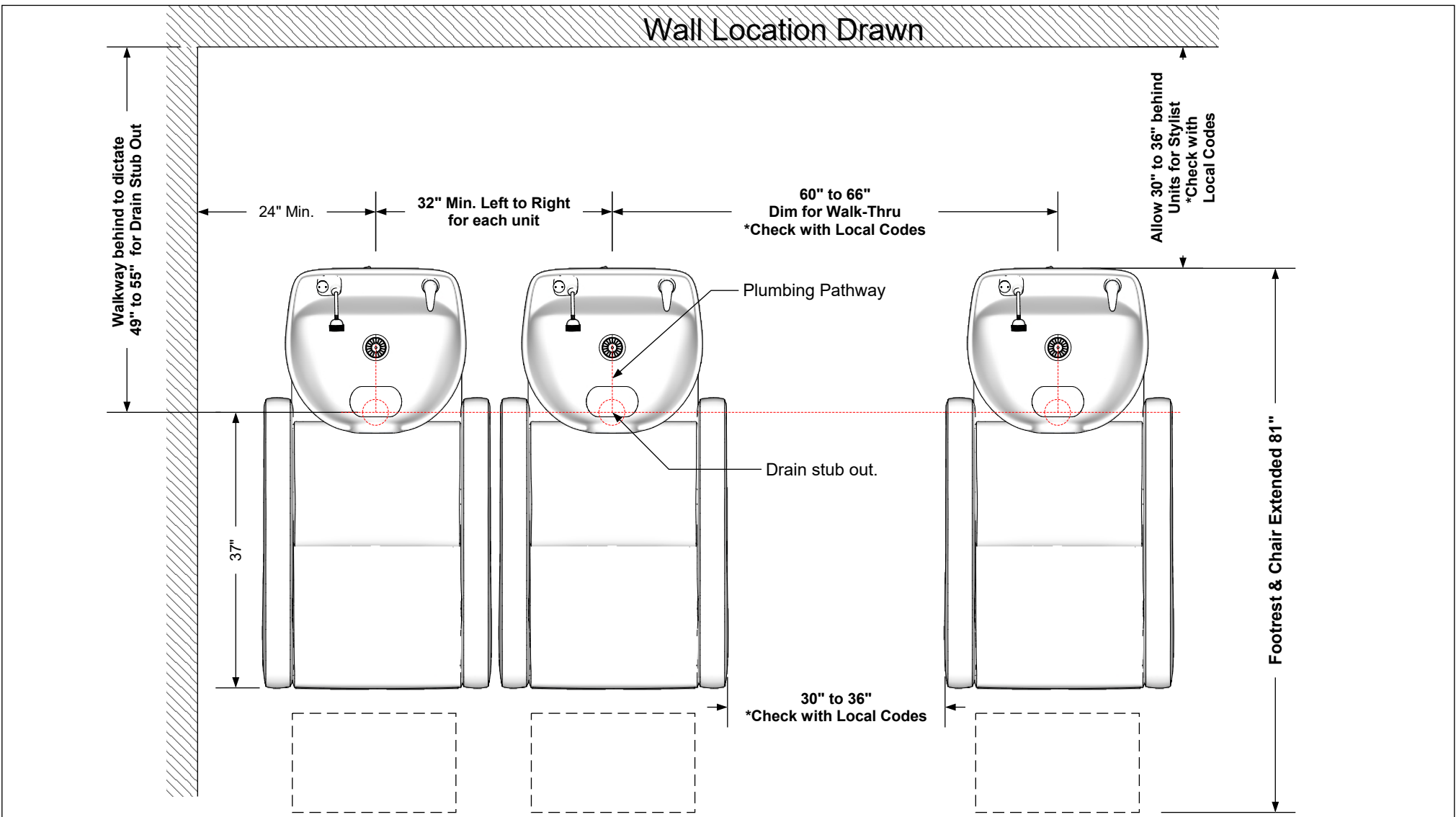
- Assembly required - yes
- Electrical required - yes
- Plumbing required - yes
- Wall blocking required - no
- Other (specify) - n/a
- Other (specify) - n/a
- Other (specify) - n/a
- Other (specify) - n/a

**Specification Drawing**

This **Specification Drawing** is intended for communicating the basic description, function, appearance, dimensions, features, and installation of an item as manufactured by Collins Manufacturing Company. Because this drawing does not contain project specific information such as quantities, finishes, or options, it is not an approval drawing and does not require a signature. This drawing remains the property of Collins Manufacturing Company and must not be used against the interests of Collins Manufacturing Company.

**Product Information**

		Collins Manufacturing 2000 Bowser Road Cookeville, TN 38506	
Name: Nirvana Comfort Wash			
Size: NTS	Part Number: 2880	Drawn By: Eng	
Prepared Date: 2/15/21	Revision Date: 2/18/21	Revision Number: Rev 1	Sheet: 2 of 3



**Multi Unit Recommended Spacing Configuration**  
**\*Please Consult Local Codes**

**Additional Information**

Assembly required - yes  
 Electrical required - yes  
 Plumbing required - yes  
 Wall blocking required - no  
 Other (specify) - n/a  
 Other (specify) - n/a  
 Other (specify) - n/a  
 Other (specify) - n/a

**Specification Drawing**

This **Specification Drawing** is intended for communicating the basic description, function, appearance, dimensions, features, and installation of an item as manufactured by Collins Manufacturing Company. Because this drawing does not contain project specific information such as quantities, finishes, or options, it is not an approval drawing and does not require a signature. This drawing remains the property of Collins Manufacturing Company and must not be used against the interests of Collins Manufacturing Company.

**Product Information**

		Collins Manufacturing 2000 Bowser Road Cookeville, TN 38506	
Name: Nirvana Comfort Wash			
Size: NTS	Part Number: 2880	Drawn By: Eng	
Prepared Date: 2/15/21	Revision Date: 2/18/21	Revision Number: Rev 1	Sheet: 3 of 3