



## EDU REVE CONCIERGE DESK

SKU:2030-30

Stunning and state-of-the-art, the Reve Collection is designed to add a touch of elegance and sophistication.

Make a great first impression with The Reve Concierge Desk. Featuring sleek lines, clean simple box construction with no visible hardware, making this unit perfect for any salon or spa.

### TECHNICAL INFORMATION

---

- Measures: 30"W x 23"D x 43"H
- 30" Wide customer ledge
- Under-ledge cubbies
- Large cabinet w/ adjustable shelf for storage
- Opening for electronic cash drawer
- 36" work surface
- Sleek, no visible hardware design

### SHIPPING INFORMATION

---

Item generally ships via Freight(Truck) service

- Weight: 203 lbs
- Dimensions: 36"L x 32"W x 51"H

### WARRANTY

---

#### 7.5 Years:

- Models 3500, 4500, 5550 Foot Operated Hydraulic Pumps

#### 5 years:

- Collins Comfort Zone anti-fatigue mats
- Collins all purpose and shampoo chair back reclining mechanisms
- Models 3250, 4250, 5250 Foot Operated Hydraulic Pumps

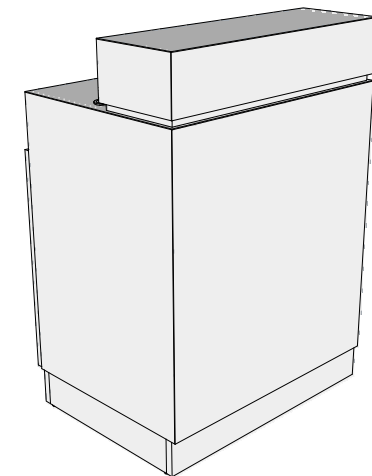
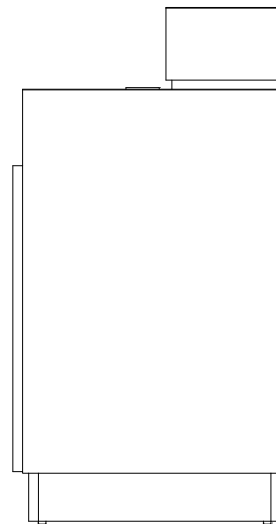
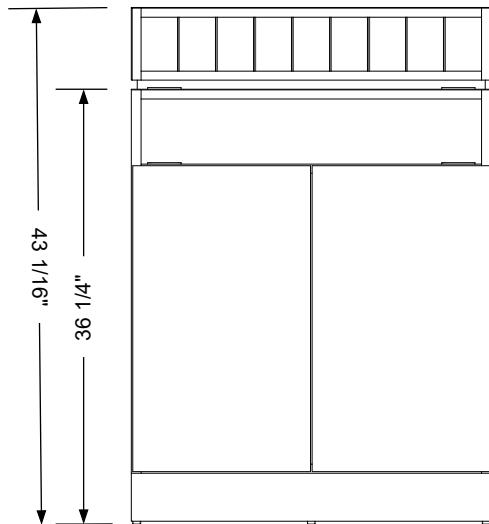
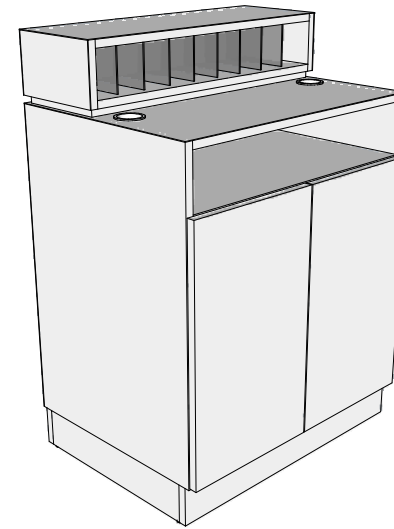
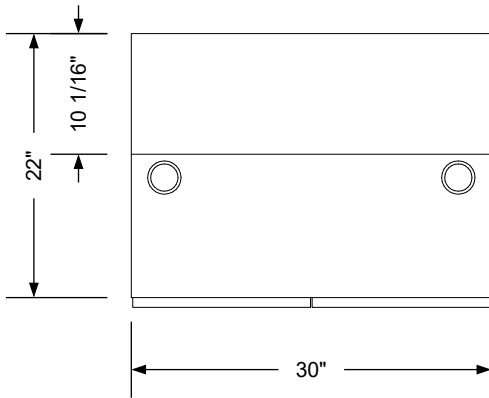
#### 3 Years:

- BKB Electric Base

#### 1 year:

- All remaining components, unless otherwise noted






### Additional Information

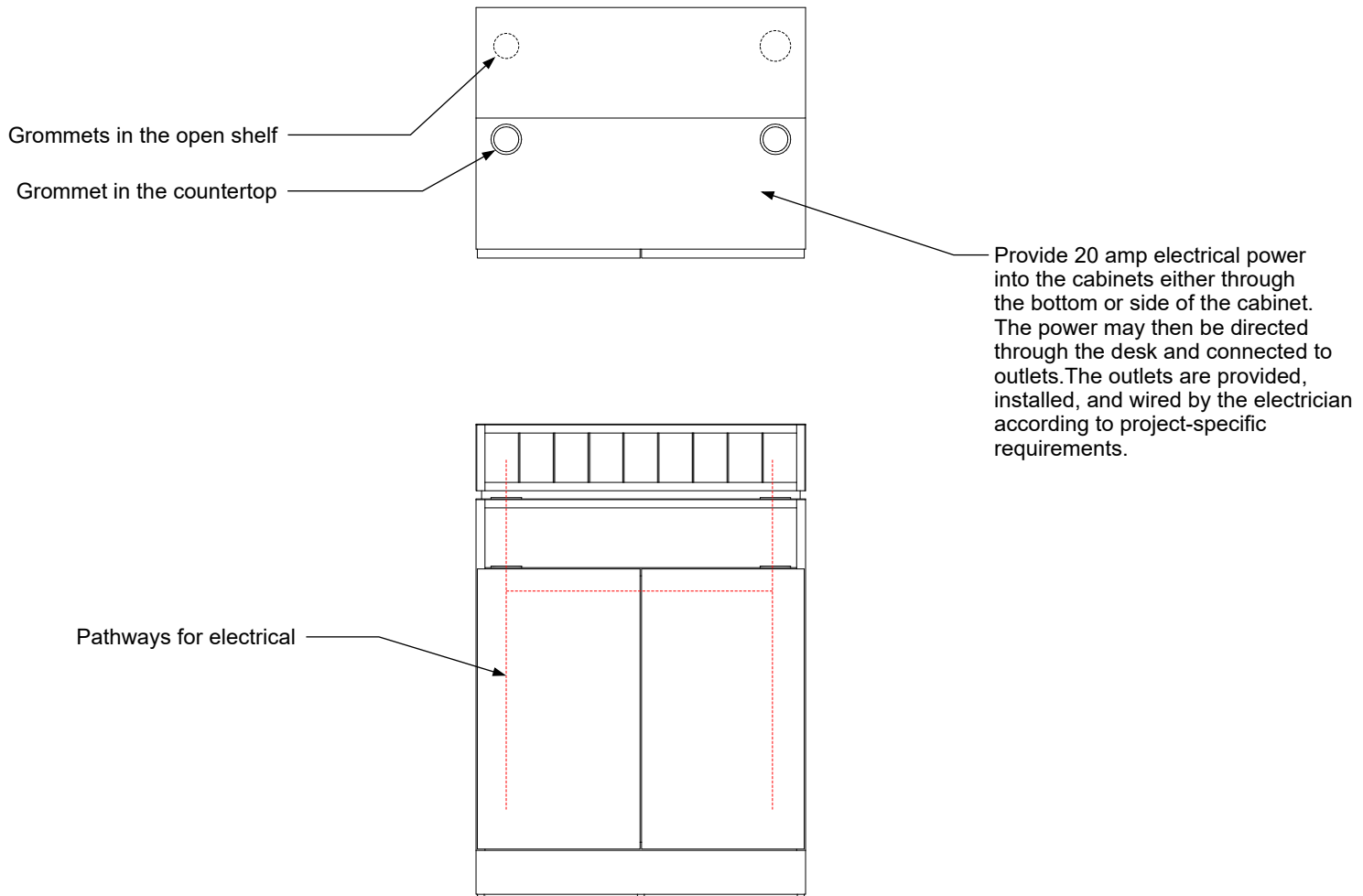
Assembly required - no  
 Electrical required - yes  
 Plumbing required - no  
 Wall blocking required - no  
 COM yardage/laminate usage - 66 sf  
 4"h laminated plywood toe + 1/4"h glides  
 Other (specify) - n/a  
 Other (specify) - n/a

### Specification Drawing

This **Specification Drawing** is intended for communicating the basic description, function, appearance, dimensions, features, and installation of an item as manufactured by Collins Manufacturing Company. Because this drawing does not contain project specific information such as quantities, finishes, or options, it is not an approval drawing and does not require a signature. This drawing remains the property of Collins Manufacturing Company and must not be used against the interests of Collins Manufacturing Company.

### Product Information

		Collins Manufacturing 2000 Bowser Road Cookeville, TN 38506	
Name: <b>Reve Concierge Desk</b>			
Size: <b>NTS</b>	Part Number: <b>2060-30</b>	Drawn By: <b>Eng</b>	
Prepared Date: <b>4/21/20</b>	Revision Date: <b>Date</b>	Revision Number: <b>Rev #</b>	Sheet: <b>1 of 2</b>



### Electrical stub out detail


#### Additional Information

Assembly required - no  
 Electrical required - yes  
 Plumbing required - no  
 Wall blocking required - no  
 COM yardage/laminate usage - 66 sf  
 4" h laminated plywood toe + 1/4" h glides  
 Other (specify) - n/a  
 Other (specify) - n/a

#### Specification Drawing

This **Specification Drawing** is intended for communicating the basic description, function, appearance, dimensions, features, and installation of an item as manufactured by Collins Manufacturing Company. Because this drawing does not contain project specific information such as quantities, finishes, or options, it is not an approval drawing and does not require a signature. This drawing remains the property of Collins Manufacturing Company and must not be used against the interests of Collins Manufacturing Company.

#### Product Information

		Collins Manufacturing 2000 Bowser Road Cookeville, TN 38506	
Name: <b>Reve Concierge Desk</b>			
Size: <b>NTS</b>	Part Number: <b>2060-30</b>	Drawn By: <b>Eng</b>	
Prepared Date: <b>4/21/20</b>	Revision Date: <b>Date</b>	Revision Number: <b>Rev #</b>	Sheet: <b>2 of 2</b>