



## LEHIGH PLUS ISLAND

SKU:2163-48



Bring a little style to your classroom with our student Lehigh+ Island. Ideal for two back-to-back students, this space-saving island features tool holders and space to still write and take notes. The double locking storage cabinets below offer space for materials while keeping them safe.

### TECHNICAL INFORMATION

---

- 48"W x 33"D x 87"H
- Tool holders
- Mannequin head clamp strip
- Mannequin head storage cubby
- Fourplex outlet
- Student kit storage
- Double locking storage cabinets below counter
- Mirror

### SHIPPING INFORMATION

---

Item generally ships via Freight(Truck) service

- Weight: 675 lbs
- Dimensions: 2 pallets

### WARRANTY

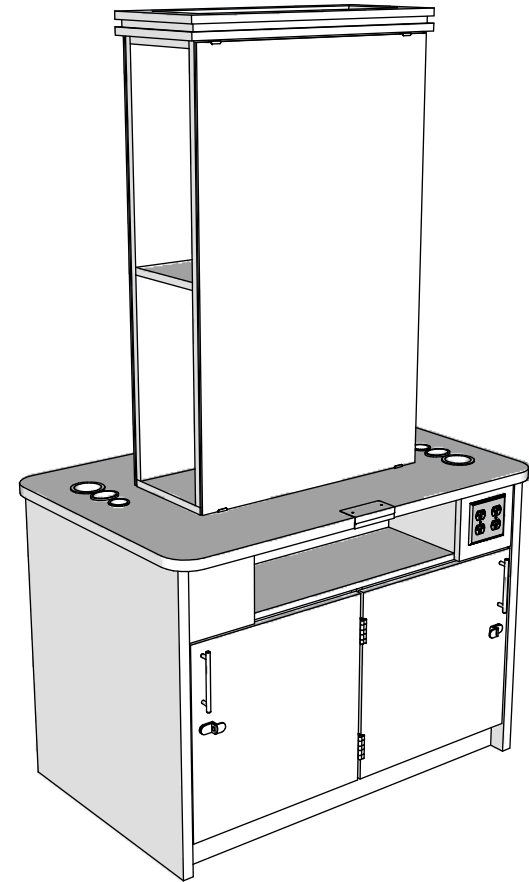
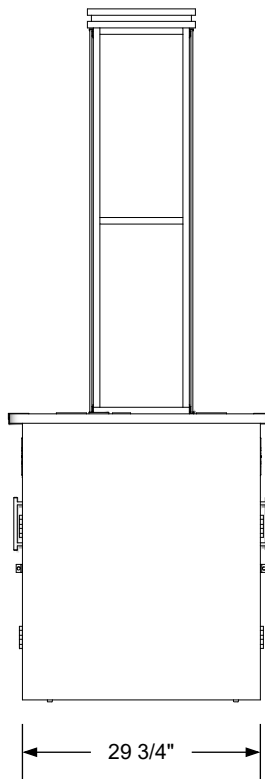
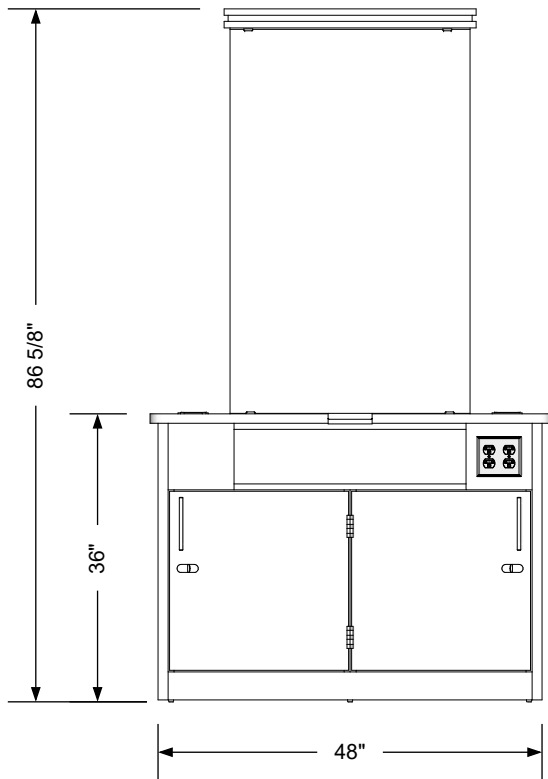
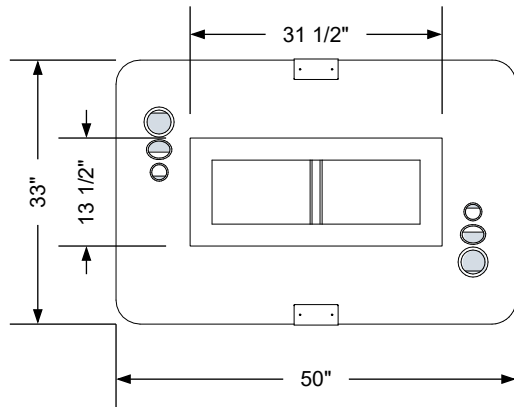
---

#### 3 Years:

- Ball-Bearing Drawer Slides
- Cabinet hinges

#### 1 Year:

- All remaining components, unless noted otherwise, are guaranteed for a period of one year from the date of purchase.




**Additional Information**

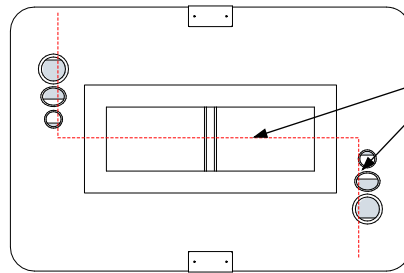
Assembly required - yes  
 Electrical required - yes  
 Plumbing required - no  
 Wall blocking required - no  
 COM yardage/laminate usage - 133 sf  
 4"h laminated plywood toe + 1/4"h glides  
 Other (specify) - n/a  
 Other (specify) - n/a

**Specification Drawing**

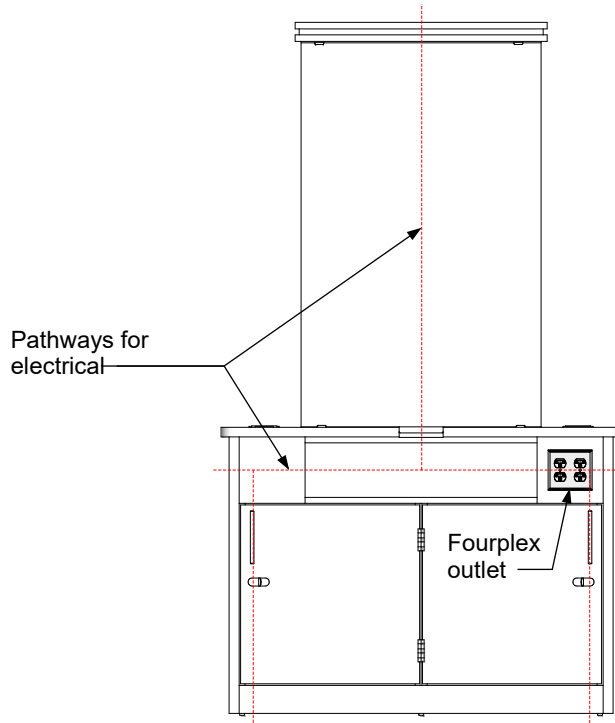
This **Specification Drawing** is intended for communicating the basic description, function, appearance, dimensions, features, and installation of an item as manufactured by Collins Manufacturing Company. Because this drawing does not contain project specific information such as quantities, finishes, or options, it is not an approval drawing and does not require a signature. This drawing remains the property of Collins Manufacturing Company and must not be used against the interests of Collins Manufacturing Company.

**Product Information**

		Collins Manufacturing 2000 Bowser Road Cookeville, TN 38506	
Name: <b>Lehigh Plus Island</b>			
Size: <b>NTS</b>	Part Number: <b>2163-48</b>	Drawn By: <b>Eng</b>	
Prepared Date: <b>5/5/20</b>	Revision Date: <b>Date</b>	Revision Number: <b>Rev #</b>	Sheet: <b>1 of 2</b>

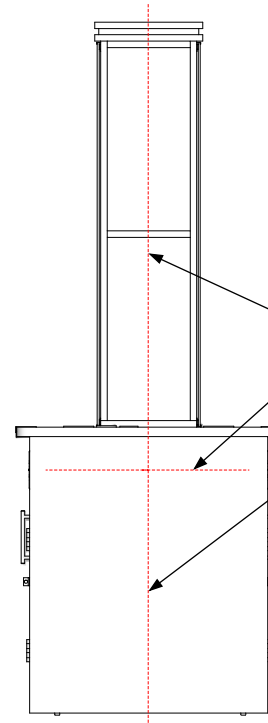


Pathways for electrical.



Pathways for electrical

Fourplex outlet



Pathways for electrical

The electrician is responsible for connecting power to the fourplex outlets either from the floor or down from the ceiling, or from station to station along the indicated path. Provide a 20 amp, switched outlet for each student (two per island station).

### Electrical stub out detail

#### Additional Information

Assembly required - yes  
 Electrical required - yes  
 Plumbing required - no  
 Wall blocking required - no  
 COM yardage/laminate usage - 133 sf  
 4" h laminated plywood toe + 1/4" h glides  
 Other (specify) - n/a  
 Other (specify) - n/a

#### Specification Drawing

This **Specification Drawing** is intended for communicating the basic description, function, appearance, dimensions, features, and installation of an item as manufactured by Collins Manufacturing Company. Because this drawing does not contain project specific information such as quantities, finishes, or options, it is not an approval drawing and does not require a signature. This drawing remains the property of Collins Manufacturing Company and must not be used against the interests of Collins Manufacturing Company.

#### Product Information

		Collins Manufacturing 2000 Bowser Road Cookeville, TN 38506	
Name: <b>Lehigh Plus Island</b>			
Size: <b>NTS</b>	Part Number: <b>2163-48</b>	Drawn By: <b>Eng</b>	
Prepared Date: <b>5/5/20</b>	Revision Date: <b>Date</b>	Revision Number: <b>Rev #</b>	Sheet: <b>2 of 2</b>