



MERANO DRYER CHAIR

SKU:878-33



The Merano Dryer Chair offers a classic shape and design, with modern details. The tapered back and thick curved urethane arms are designed for comfort, while the slight slope in the padded seat cushion allows clients to sit at a comfortable angle when in the chair. Includes our cETL 1400 Watts certified dryer, featuring ion technology, and temperatures reaching 150° F.

TECHNICAL INFORMATION

- Overall size - 26"W x 32"D x 48"H
- Width between arms - 22"
- Height to seat - 18.5"
- Depth of seat - 20"

SHIPPING INFORMATION

Item generally ships via Parcel (Fedex/UPS) service

- Weight: 84 lbs
- Dimensions: 2 cartons measuring 17"x15"x34" and 33"x25"x36"

WARRANTY

7.5 Years:

- Models 3500, 4500, 5550 Foot Operated Hydraulic Pumps

5 years:

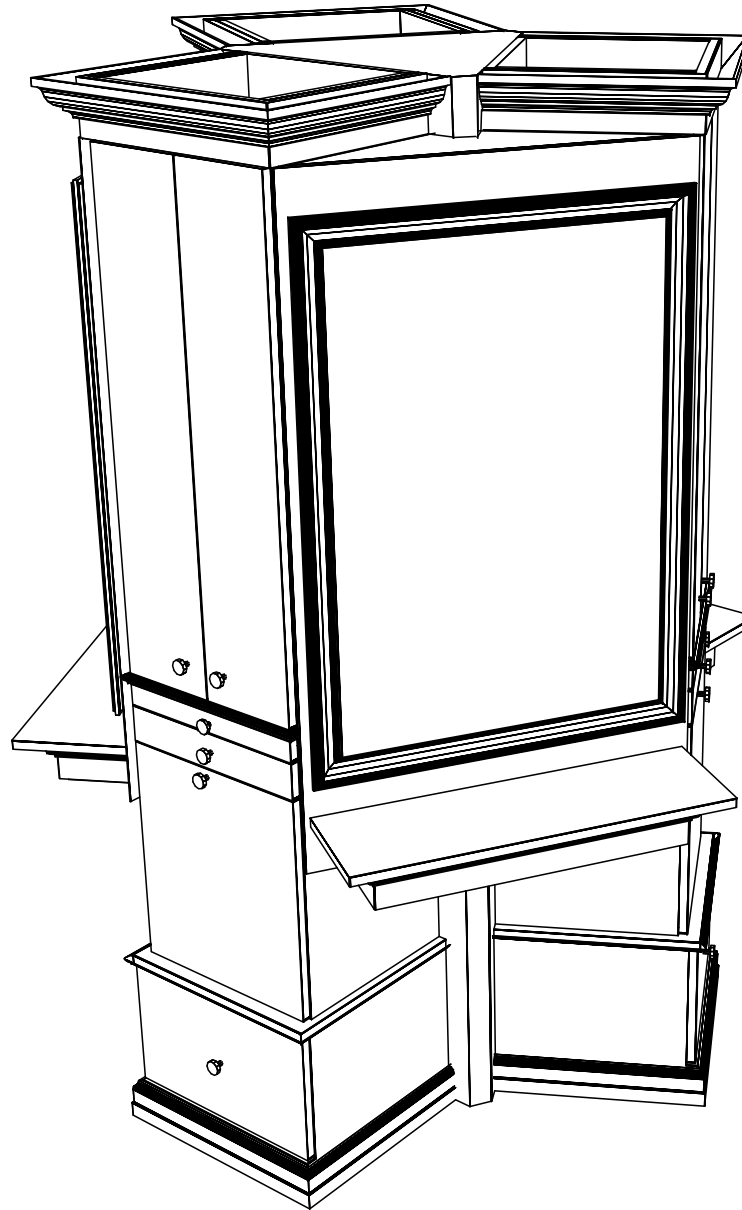
- Collins Comfort Zone anti-fatigue mats
- Collins all purpose and shampoo chair back reclining mechanisms
- Models 3250, 4250, 5250 Foot Operated Hydraulic Pumps

3 Years:

- BKB Electric Base

1 year:

- All remaining components, unless otherwise noted



Finish Schedule - 878-33-1

Face Color - Shaker Cherry
 Top Color - Shaker Cherry
 Toe Color - Black
 Pulls - Chrome Knobs
 Interior - White
 Other (Specify) -

General Notes:

1. All counter tops are to be made removable wherever possible.
2. Items must be broken into manageable sections For Shipping. Mark For Ease Of Reassembly.
3. Install Shipping Cleats Wherever Possible To Prevent Shipping Damage.
4. Purchased items Must Be Trial Fit Before Shipping.

collins

Collins Manufacturing
 2000 Bowser Rd.
 Cookeville TN 38506

Title:

Size:

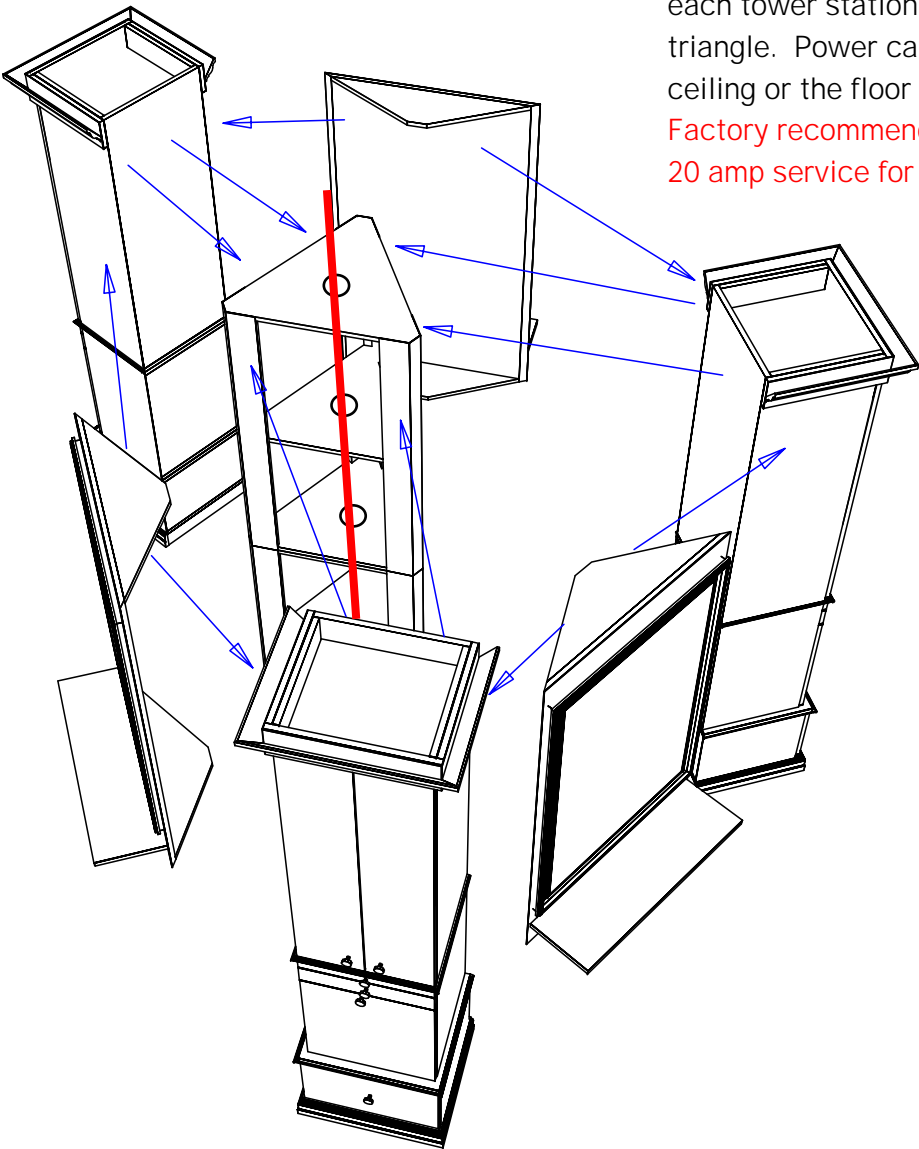
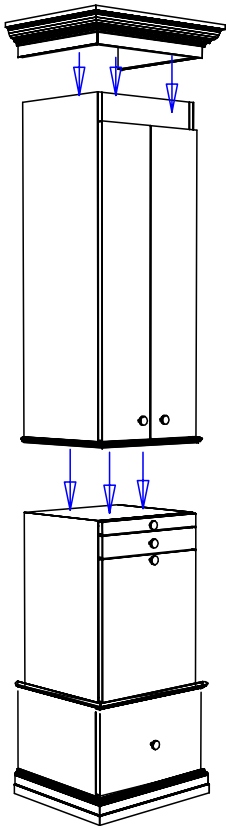
69449

Drawn By:
 Brian

Date: 08/21/07

Sheet #: 3

Adjacent cabinets and components should be assembled by fastening through the interior panels with the screws or bolts provided. Tighten securely.



Electrical power to be provided to each tower station thru the center triangle. Power can come from the ceiling or the floor as needed.
Factory recommends 110 volt 20 amp service for each tower.

Finish Schedule - 878-33-1

Face Color - Shaker Cherry
Top Color - Shaker Cherry
Toe Color - Black
Pulls - Chrome Knobs
Interior - White
Other (Specify) -

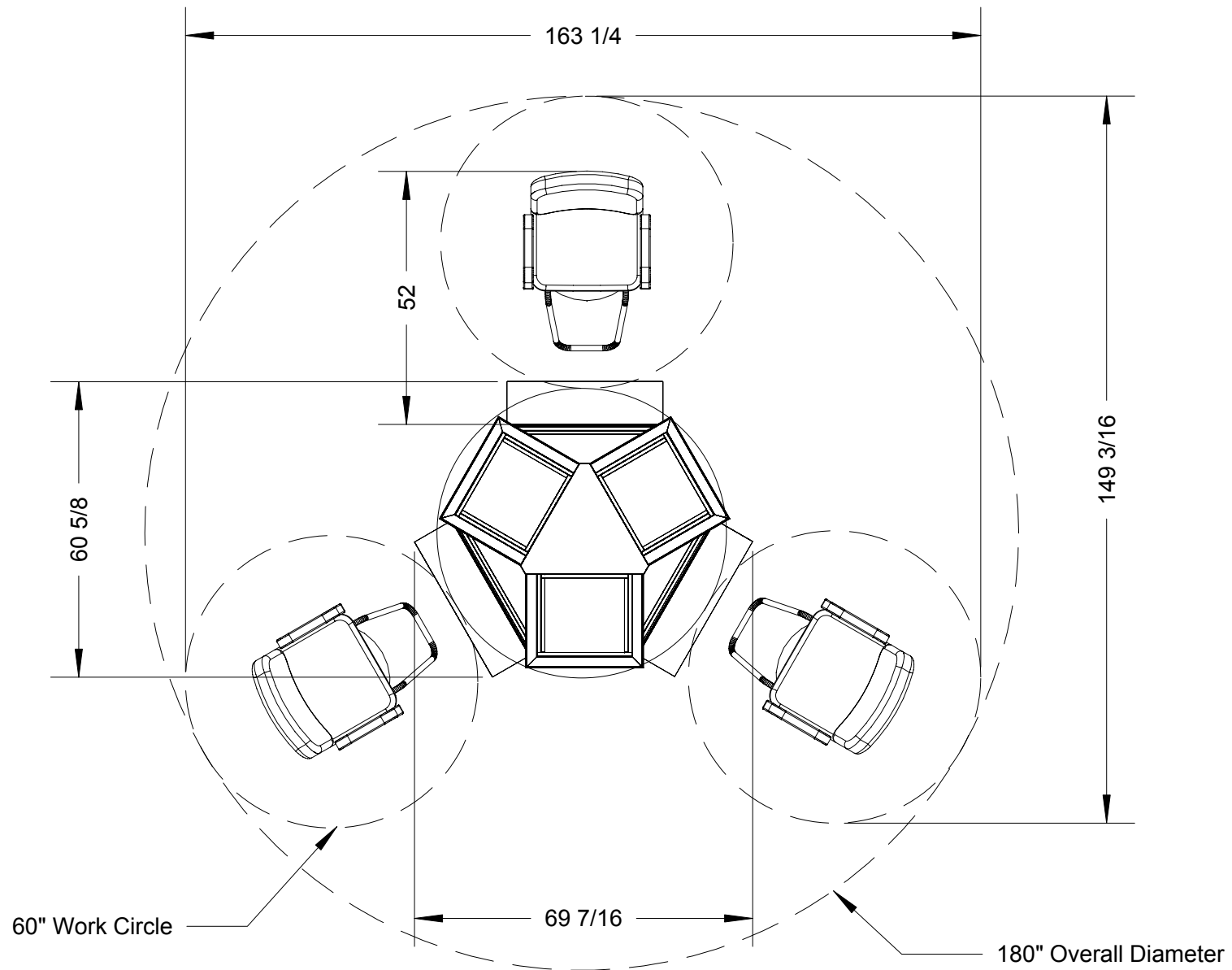
General Notes:

1. All counter tops are to be made removable wherever possible.
2. Items must be broken into manageable sections For Shipping. Mark For Ease Of Reassembly.
3. Install Shipping Cleats Wherever Possible To Prevent Shipping Damage.
4. Purchased items Must Be Trial Fit Before Shipping.



Collins Manufacturing
2000 Bowser Rd.
Cookeville TN 38506

Title:		
Size:	# 69449	Drawn By: Brian
Date:	08/21/07	Sheet #: 7



Quantity - 1

Finish Schedule - 878-33-1

Face Color -
 Top Color -
 Toe Color -
 Pulls -
 Interior -
 Other (Specify) -

collins

Collins Manufacturing
 2000 Bowser Road
 Cookeville TN 38506

Customer:

Scale:

Order:

Drawn By:

Date:

Sheet: