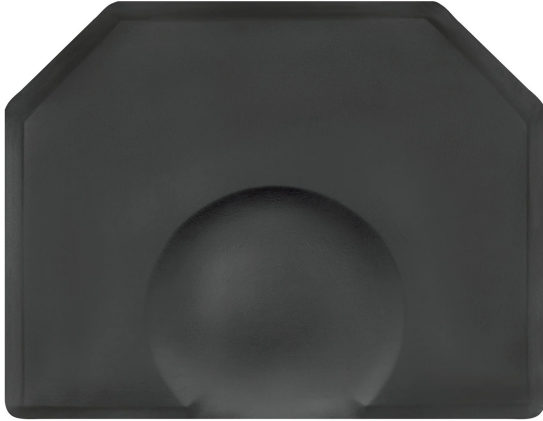




## ELITE - ORIGINAL BLACK OVERSIZED 60" ANTI-FATIGUE MAT

SKU:XL4860S



The "Original" Black American-Made Polyurethane Beauty Mat

The Elite is the cornerstone of the Smart Step brand and the "Gold Standard" of *Premium Standing Solutions* for salons. With its simple smooth surface, elegant lines and sleek design, the Elite is the mat of choice among professionals.

Proudly Made in the USA.

### TECHNICAL INFORMATION

---

- 4' x 5' x 3/4" - Round - Chair Depression
- Unmatched Comfort and Support
- 3/4" One-Piece Polyurethane Construction
- Beveled Edges Will Never Curl
- Will Not Separate, Bubble, or Delaminate
- Stain and Hair Color Resistant
- Perfected and Tested for Over 10 Years
- Protective Clear Coat Finish

### SHIPPING INFORMATION

---

Item generally ships via Parcel (Fedex/UPS) service

- Weight: 18 lbs
- Dimensions: 49"L x 10"W x 10"H

### WARRANTY

---

#### 5 Years:

- Anti-fatigue mats are guaranteed for five years from the date of purchase.