



## QSE DELUXE WET STATION

SKU:5515-48



The Quick Ship Deluxe Wet Station, complete with storage and storage drawers has everything you need and is compact and space saving.

The Quick Ship (QSE) feature allows you to get this quicker.

### TECHNICAL INFORMATION

- Measures: 48"W x 16"D x 39"H
- Cabinet w/ adjustable shelf
- 2 Drawers
- 6 Outlet power strip
- Shampoo well & lift lid
- Backsplash
- 36" x 42" Mirror
- Tool panel
  - Blow dryer
  - Flat iron
  - 1" Curling iron
  - 2" Curling iron
  - Clippers
- Can be made left-handed
- Pictured w/ CB19 Shampoo Bowl, ordered separately

### SHIPPING INFORMATION

Item generally ships via Freight(Truck) service

- Weight: 266 lbs
- Dimensions: 54"L x 32"W x 48"H

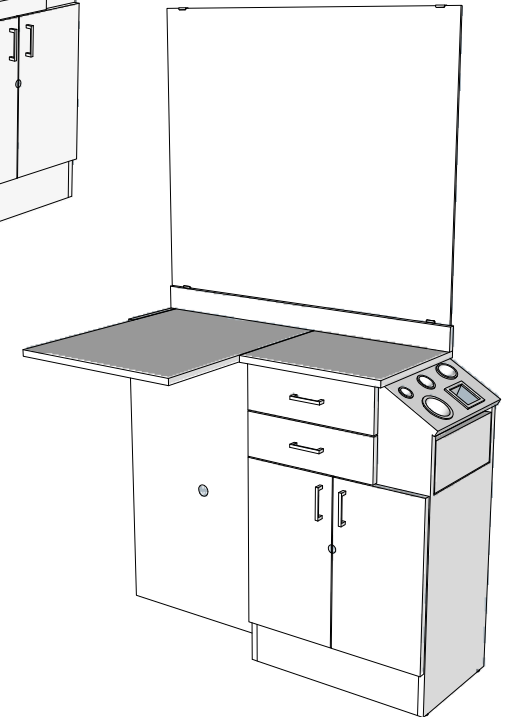
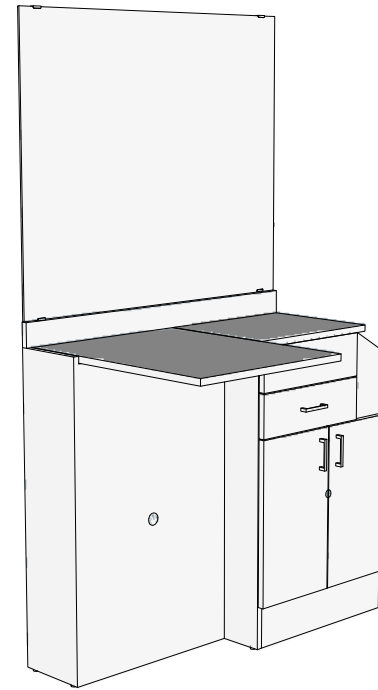
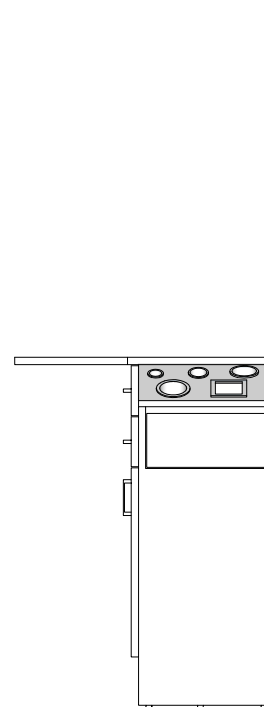
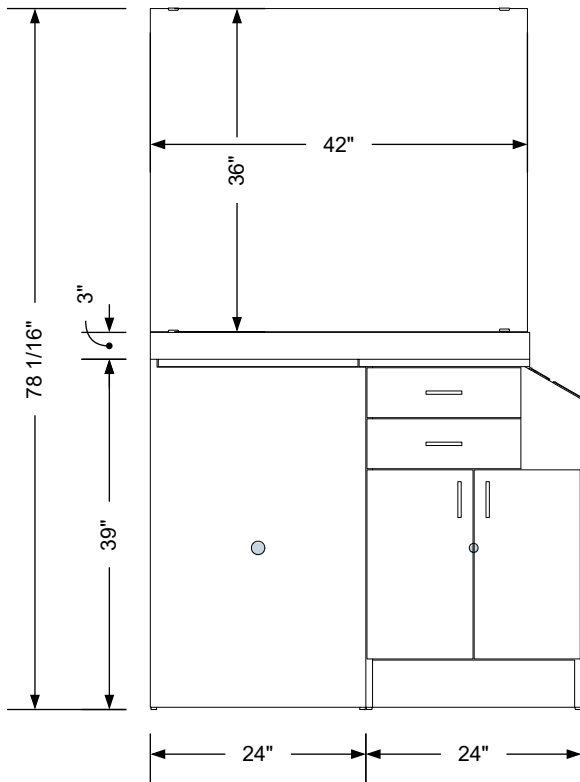
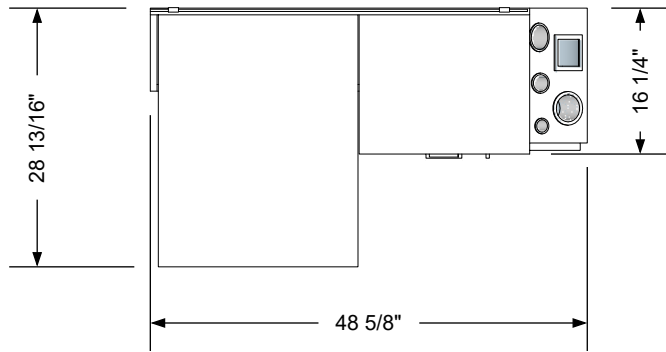
### WARRANTY

#### 3 Years:

- Ball-Bearing Drawer Slides
- Cabinet hinges

#### 1 Year:

- All remaining components, unless noted otherwise, are guaranteed for a period of one year from the date of purchase.



## Additional Information

Assembly required - yes  
 Electrical required - yes  
 Plumbing required - yes  
 Wall blocking required - no  
 COM yardage/laminate usage - 42 sf  
 3 1/2" h laminated toe + 1/4" h glides  
 Other (specify) - n/a  
 Other (specify) - n/a

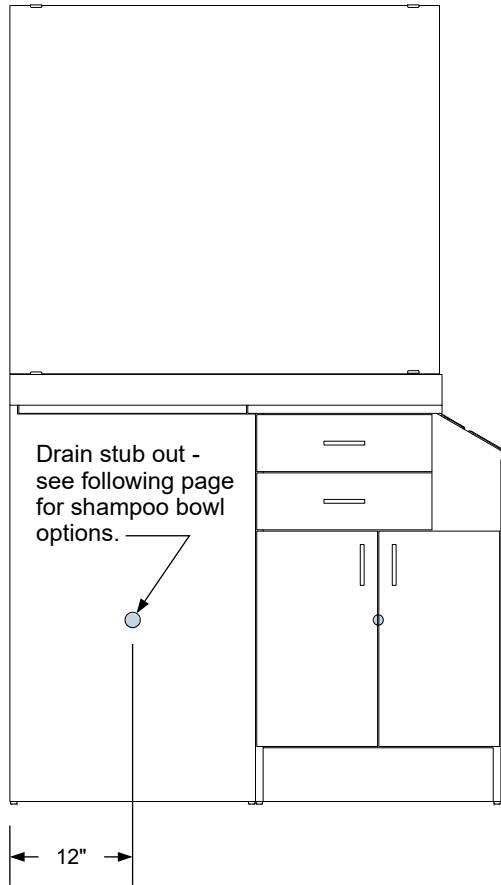
## Specification Drawing

This **Specification Drawing** is intended for communicating the basic description, function, appearance, dimensions, features, and installation of an item as manufactured by Collins Manufacturing Company. Because this drawing does not contain project specific information such as quantities, finishes, or options, it is not an approval drawing and does not require a signature. This drawing remains the property of Collins Manufacturing Company and must not be used against the interests of Collins Manufacturing Company.

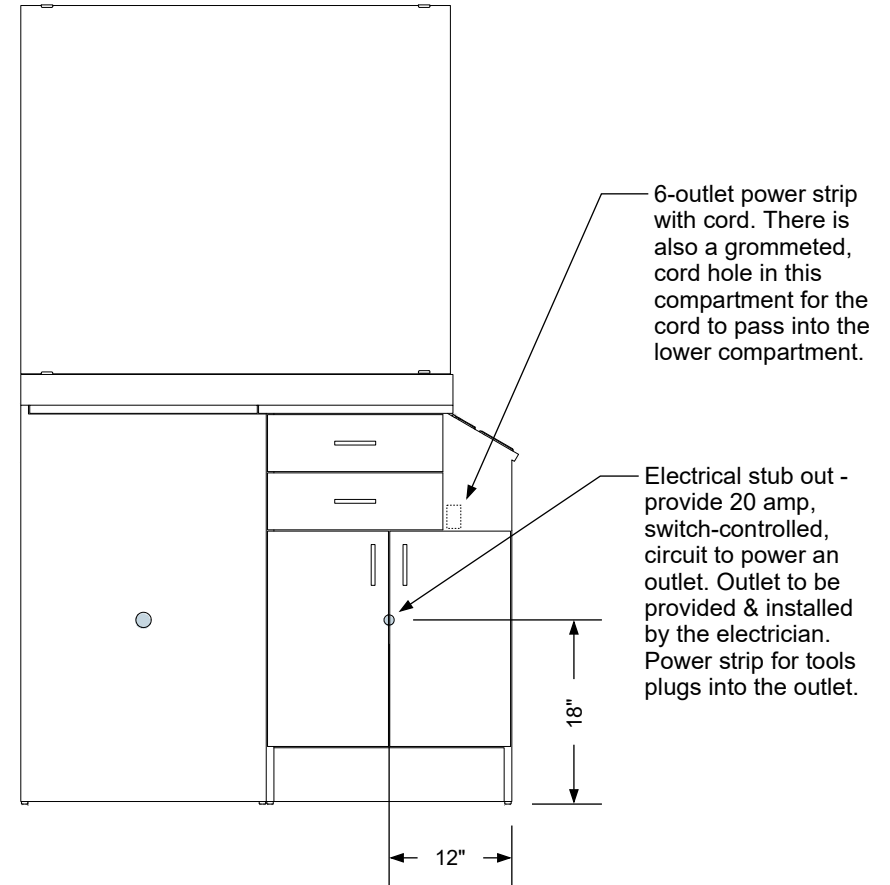


Collins Manufacturing  
 2000 Bowser Road  
 Cookeville, TN 38506

Title: <b>QSE Deluxe 39Hi Wet Station</b>			
Size: <b>NTS</b>	Part Number: <b>5515-48</b>	Drawn By: <b>Eng</b>	
Prepared Date: <b>3/29/21</b>	Revision Date: <b>Date</b>	Revision Number: <b>Rev #</b>	Sheet: <b>1 of 3</b>



**Plumbing stub out detail**




**Electrical stub out detail**

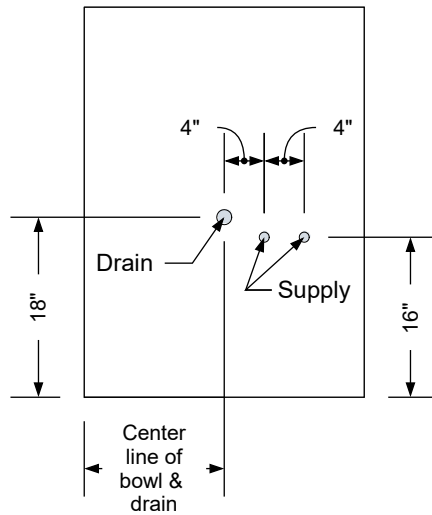
### Additional Information

Assembly required - yes  
 Electrical required - yes  
 Plumbing required - yes  
 Wall blocking required - no  
 COM yardage/laminate usage - 42 sf  
 3 1/2"h laminated toe + 1/4"h glides  
 Other (specify) - n/a  
 Other (specify) - n/a

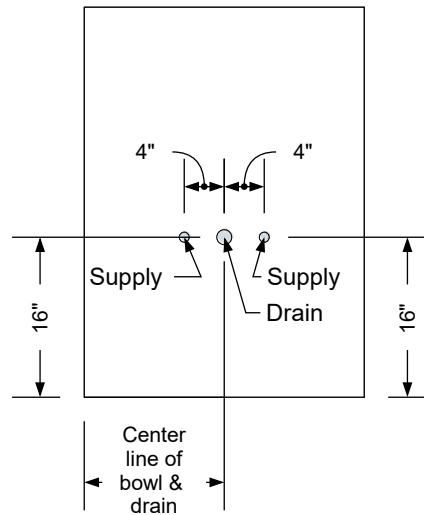
### Specification Drawing

This **Specification Drawing** is intended for communicating the basic description, function, appearance, dimensions, features, and installation of an item as manufactured by Collins Manufacturing Company. Because this drawing does not contain project specific information such as quantities, finishes, or options, it is not an approval drawing and does not require a signature. This drawing remains the property of Collins Manufacturing Company and must not be used against the interests of Collins Manufacturing Company.

		Collins Manufacturing 2000 Bowser Road Cookeville, TN 38506	
Title: QSE Deluxe 39Hi Wet Station			
Size: NTS	Part Number: 5515-48		Drawn By: Eng
Prepared Date: 3/29/21	Revision Date: Date	Revision Number: Rev #	Sheet: 2 of 3

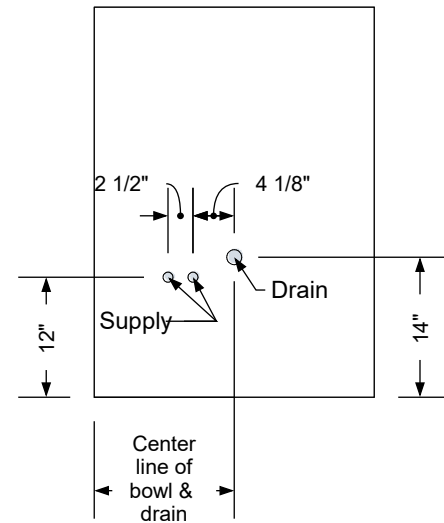


**Standard Shampoo Bowl**



**T100 w/ Tilting Shampoo Bowl**

**Note: Lift Lid Must Be Reduced In Size To Use This Option.**



**K100 Adjust-A-Sink Shampoo Bowl**

**Note: Lift Lid Must Be Reduced In Size To Use This Option.**


**Typical Collins Shampoo Bowl Options**

**Additional Information**

Assembly required - yes  
Electrical required - yes  
Plumbing required - yes  
Wall blocking required - no  
COM yardage/laminate usage - 42 sf  
3 1/2" h laminated toe + 1/4" h glides  
Other (specify) - n/a  
Other (specify) - n/a

**Specification Drawing**

This **Specification Drawing** is intended for communicating the basic description, function, appearance, dimensions, features, and installation of an item as manufactured by Collins Manufacturing Company. Because this drawing does not contain project specific information such as quantities, finishes, or options, it is not an approval drawing and does not require a signature. This drawing remains the property of Collins Manufacturing Company and must not be used against the interests of Collins Manufacturing Company.

 Collins Manufacturing 2000 Bowser Road Cookeville, TN 38506			
Title: QSE Deluxe 39Hi Wet Station			
Size: NTS	Part Number: 5515-48	Drawn By: Eng	
Prepared Date: 3/29/21	Revision Date: Date	Revision Number: Rev #	Sheet: 3 of 3