



## SOHO STYLING ISLAND

SKU:802-66



Inspired by the trendy neighborhood of Soho in New York City, this professional Soho Styling Island is designed after the cast-iron facades and original artwork found in the area.

This back-to-back configuration is made for two stylists. The curved mirror panel and ledge fit perfectly with the cast-aluminum details, making this as unique as your salon.

### TECHNICAL INFORMATION

---

- Measures: 66"W x 29"D x 93"H
- Soho shaped ledge
- Common back-to-back mirror panel
- Two Soho shaped mirrors

### SHIPPING INFORMATION

---

Item generally ships via Freight(Truck) service

- Weight: 260 lbs
- Dimensions: 48"L x 32"W x 60"H

### WARRANTY

---

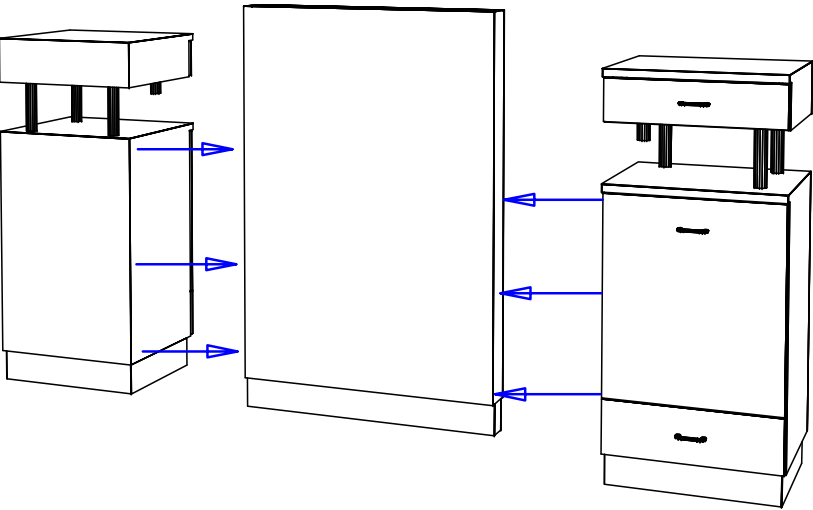
#### 3 Years:

- Ball-Bearing Drawer Slides
- Cabinet hinges

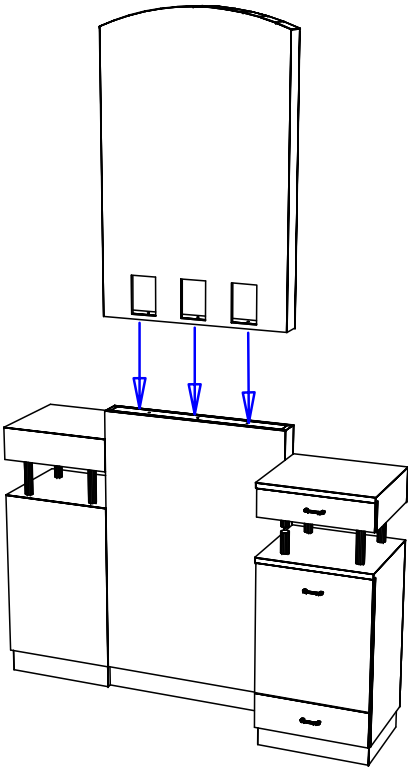
#### 1 Year:

- All remaining components, unless noted otherwise, are guaranteed for a period of one year from the date of purchase.

Step 1:  
 Bolt though the pre-drilled holes on the interior of the Base cabinets into the lower wall. Use the provided 1 1/2" connector bolts and allen wrench. There are three bolts for each base cabinet.



Step 2:  
 Place upper wall on top of lower wall and secure using the three provided 1 1/2" hex head bolts and washers.

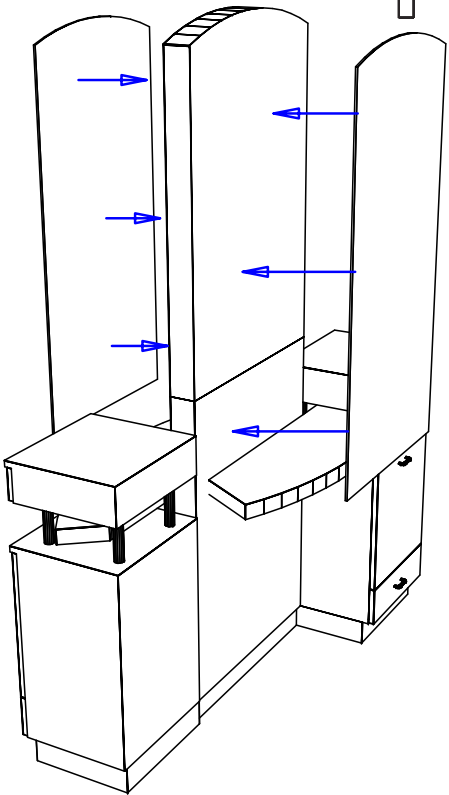
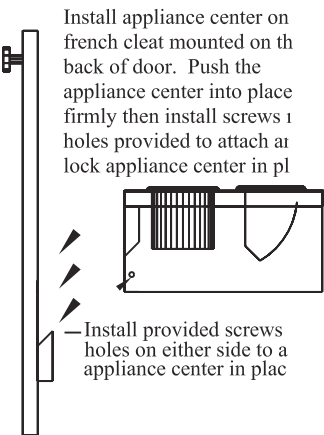
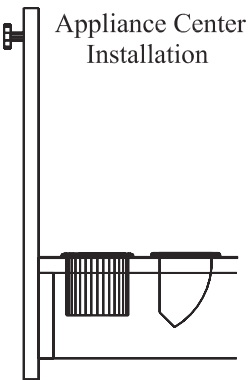
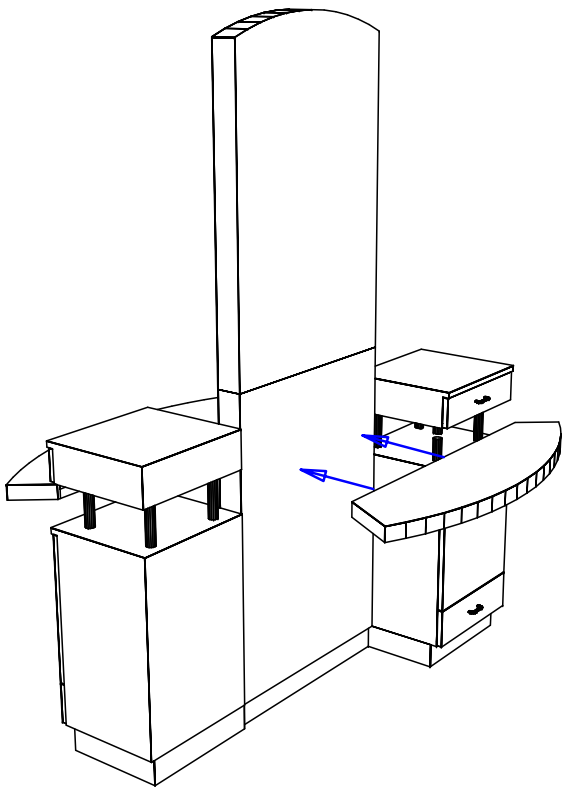


|                            |
|----------------------------|
| Quantity -                 |
| Finish Schedule - 802-66-1 |
| Face Color -               |
| Top Color -                |
| Toe Color -                |
| Reveal / Accent Color -    |
| Hardware - Soho Pulls      |
| Interior -                 |
| Other (Specify) -          |

|   |
|---|
| General Notes:  |
| 1. All counter tops are to be made removable wherever possible.                             |
| 2. Items must be broken into manageable sections For Shipping. Mark For Ease Of Reassembly. |
| 3. Install Shipping Cleats Wherever Possible To Prevent Shipping Damage.                    |
| 4. Purchased items Must Be Trial Fit Before Shipping.                                       |

|  |                     |           |
|--|---------------------|-----------|
| <b>collins</b> Collins Manufacturing<br>2000 Bowser Road<br>Cookeville, TN 38506 |                     |           |
| Title:   |                     |           |
| Size: NTS  | Drawing Number: Job | Drawn By: |
| Date: 12/04/07   | Sheet 7 of 9        |           |


Step 3:  
Attach the ledges to the wall by bolting through the two pre-drilled holes in the ledge back into the wall with the 1 1/2" hex head bolts and washers. Do not tighten bolts at this point. With ledge bolts started, carefully insert the chrome tubing between the bottom of the ledge and the top of the lower cabinet. Secure tubing by bolting through top of lower cabinet into the tubing. Tighten Ledge bolts.

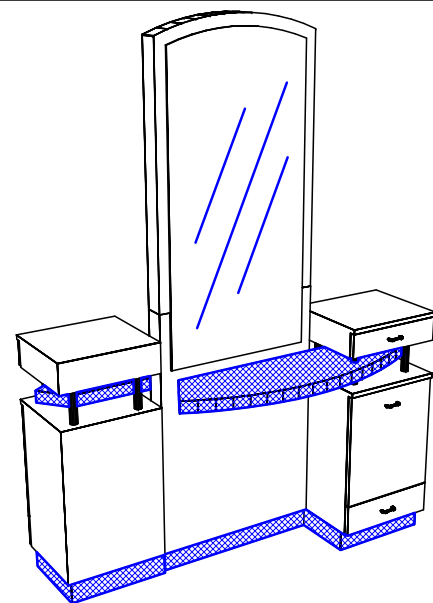


Step 4:  
Install mirrors by following the directions on the mirror clip boxes.

|                            |
|----------------------------|
| Quantity -                 |
| Finish Schedule - 802-66-1 |
| Face Color -               |
| Top Color -                |
| Toe Color -                |
| Reveal / Accent Color -    |
| Hardware - Soho Pulls      |
| Interior -                 |
| Other (Specify) -          |

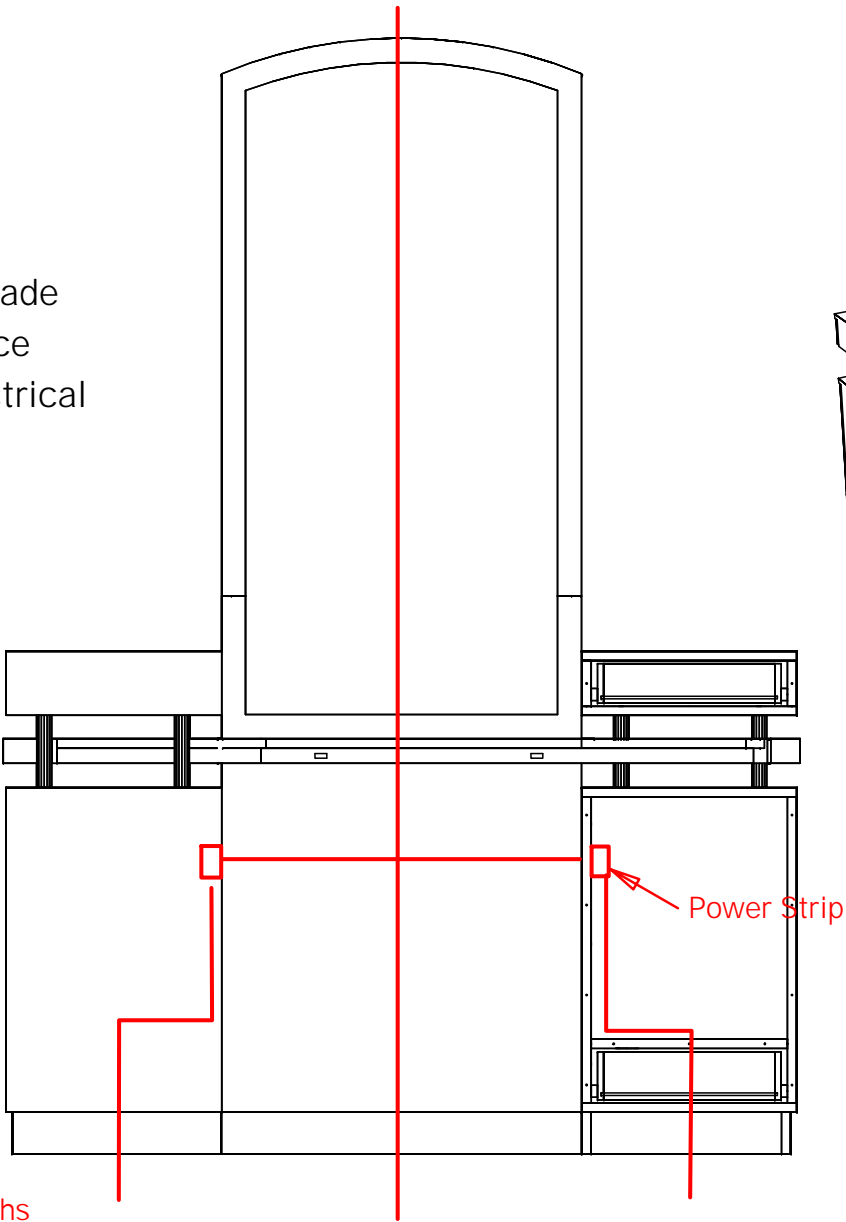
|   |
|---|
| General Notes:  |
| 1. All counter tops are to be made removable wherever possible.                             |
| 2. Items must be broken into manageable sections For Shipping. Mark For Ease Of Reassembly. |
| 3. Install Shipping Cleats Wherever Possible To Prevent Shipping Damage.                    |
| 4. Purchased items Must Be Trial Fit Before Shipping.                                       |

|   |     |   |           |
|---|-----|---|-----------|
|  |     | Collins Manufacturing<br>2000 Bowser Road<br>Cookeville, TN 38506 |           |
| Title:  |     |   |           |
| Size:   | NTS | Drawing Number:   | Job       |
| Date:   |     | Sheet   | Drawn By: |
| 12/04/07  |     | 8 of 9  |           |



All electrical connections are to be made by a qualified electrician in accordance with all national, state, and local electrical codes.

This item includes a six outlet power strip with a 4' cord. The outlet strip is rated at 15 amps. The electrician is responsible for providing and mounting an outlet inside the cabinet for the power strip to plug into. The electrician is also responsible for cutting an appropriate entry point for getting power into the cabinet.



Possible Wiring Paths

Quantity -

Finish Schedule - 802-66-1

Face Color -  
Top Color -  
Toe Color -  
Reveal / Accent Color -  
Hardware - Soho Pulls  
Interior -  
Other (Specify) -

General Notes:

1. All counter tops are to be made removable wherever possible.
2. Items must be broken into manageable sections For Shipping. Mark For Ease Of Reassembly.
3. Install Shipping Cleats Wherever Possible To Prevent Shipping Damage.
4. Purchased items Must Be Trial Fit Before Shipping.

|  |                     |           |
|--|---------------------|-----------|
| <b>collins</b> Collins Manufacturing<br>2000 Bowser Road<br>Cookeville, TN 38506 |                     |           |
| Title:   |                     |           |
| Size: NTS  | Drawing Number: Job | Drawn By: |
| Date: 12/04/07   | Sheet 9 of 9        |           |