



BRADFORD TRI-STATION STYLING ISLAND

SKU:878-33

The Bradford Tr-Station is made for three **stylist** and is derived from the popular Bradford Tower design.

Create a classic and stylish accent in your salon or spa with crown molding details that enrich the space by forming an eye-catching transition between the walls and ceiling. The Queen Anne legs detail make this a timeless piece that will not go out of style. This traditional style can fit into any decor with just the change of the laminate color. Mirrors included.

TECHNICAL INFORMATION

- Measures: 33"W, overall 90"H
- Breadboard
- Two drawers
- Fully equipped tip-out tool panel
 - Power strip
- Upper storage w/ adjustable shelves
- Bradford ledge
- Framed Bradford mirror

SHIPPING INFORMATION

Item generally ships via Freight(Truck) service

- Weight: 1505 lbs
- Dimensions: 5 skids

WARRANTY

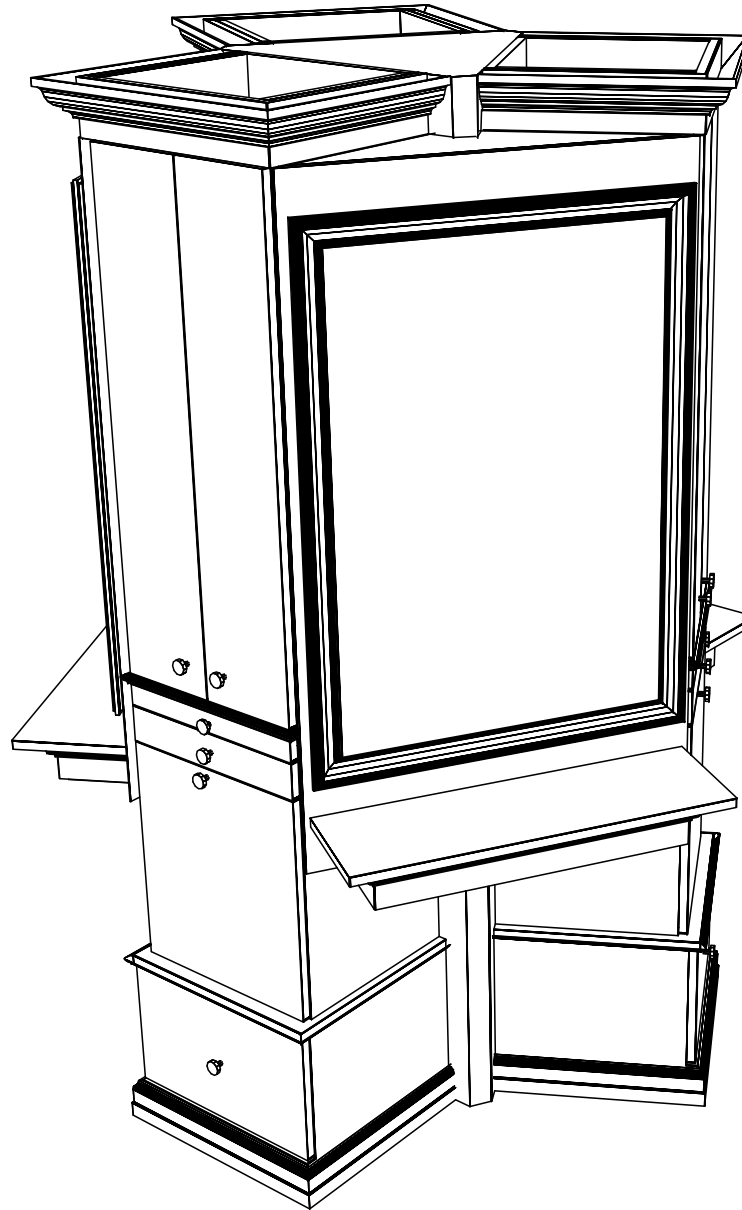
3 Years:

- Ball-Bearing Drawer Slides
- Cabinet hinges

1 Year:

- All remaining components, unless noted otherwise, are guaranteed for a period of one year from the date of purchase.





Finish Schedule - 878-33-1

Face Color - Shaker Cherry
 Top Color - Shaker Cherry
 Toe Color - Black
 Pulls - Chrome Knobs
 Interior - White
 Other (Specify) -

General Notes:

1. All counter tops are to be made removable wherever possible.
2. Items must be broken into manageable sections For Shipping. Mark For Ease Of Reassembly.
3. Install Shipping Cleats Wherever Possible To Prevent Shipping Damage.
4. Purchased items Must Be Trial Fit Before Shipping.

collins

Collins Manufacturing
 2000 Bowser Rd.
 Cookeville TN 38506

Title:

Size:

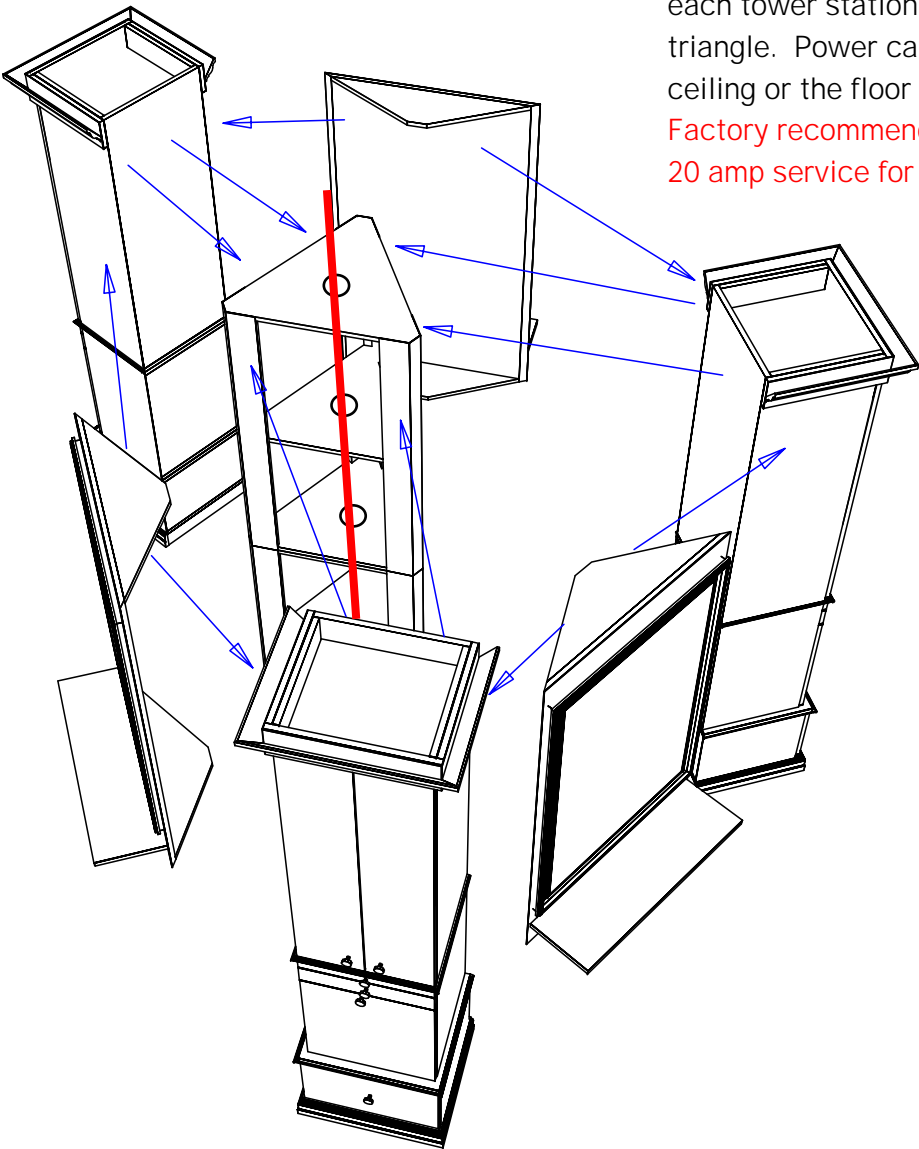
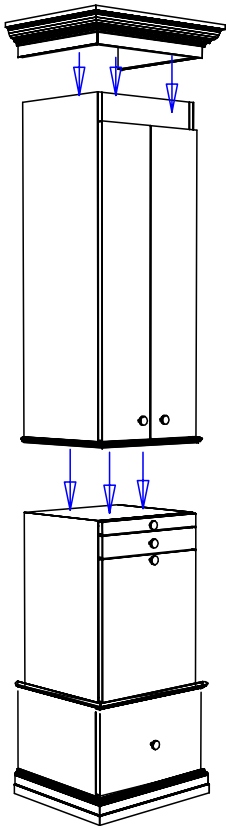
69449

Drawn By:
 Brian

Date: 08/21/07

Sheet #: 3

Adjacent cabinets and components should be assembled by fastening through the interior panels with the screws or bolts provided. Tighten securely.



Electrical power to be provided to each tower station thru the center triangle. Power can come from the ceiling or the floor as needed.
Factory recommends 110 volt 20 amp service for each tower.

Finish Schedule - 878-33-1

Face Color - Shaker Cherry
Top Color - Shaker Cherry
Toe Color - Black
Pulls - Chrome Knobs
Interior - White
Other (Specify) -

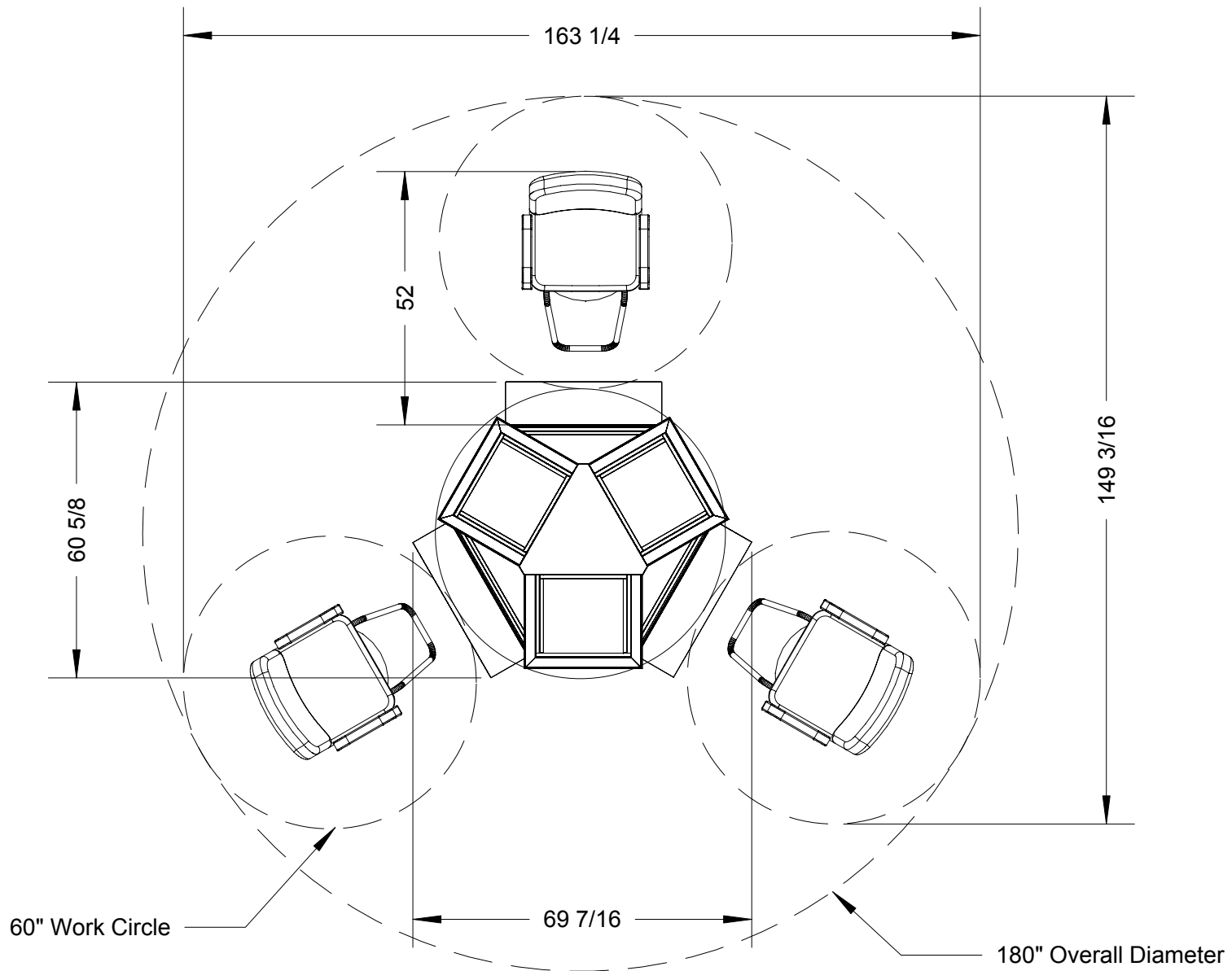
General Notes:

1. All counter tops are to be made removable wherever possible.
2. Items must be broken into manageable sections For Shipping. Mark For Ease Of Reassembly.
3. Install Shipping Cleats Wherever Possible To Prevent Shipping Damage.
4. Purchased items Must Be Trial Fit Before Shipping.



Collins Manufacturing
2000 Bowser Rd.
Cookeville TN 38506

Title:		
Size:	# 69449	Drawn By: Brian
Date:	08/21/07	Sheet #: 7



Quantity - 1

Finish Schedule - 878-33-1

Face Color -
Top Color -
Toe Color -
Pulls -
Interior -
Other (Specify) -

collins		Collins Manufacturing 2000 Bowser Road Cookeville TN 38506	
Customer:			
Scale:	Order:	Drawn By:	
Date:			Sheet: