



## BRADFORD STYLING ISLAND

SKU:881-34



With the Bradford Styling Island you can design the perfect space. Made for two back-to-back stylists, this classic and stylish unit will accent your salon with crown molding details that enrich the space by forming an eye-catching transition between the walls and ceiling. The Queen Anne legs detail make this a timeless piece that will not go out of style. The lazy susan style mirror revolves for more storage opportunities.

This traditional style can fit into any decor with just the change of the laminate color.

### TECHNICAL INFORMATION

- Measures: 34"W x 26" D x 72"H
- Queen Anne legs
- Accent molding
- Two 881-30 Bradford Vanities
  - Back-to-back
  - 4 Legs
- Optional-Claw & Ball legs w/ Dentil molding in lieu of Queen Anne legs

### SHIPPING INFORMATION

Item generally ships via Freight(Truck) service

- Weight: 546 lbs
- Dimensions: 2 skids

### WARRANTY

#### 3 Years:

- Ball-Bearing Drawer Slides
- Cabinet hinges

#### 1 Year:

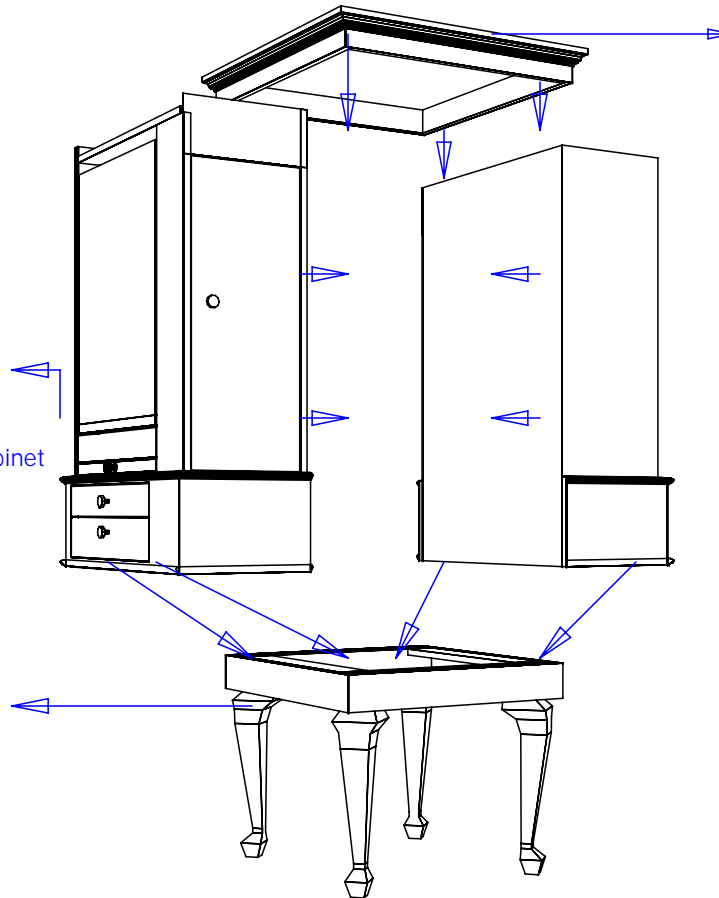
- All remaining components, unless noted otherwise, are guaranteed for a period of one year from the date of purchase.



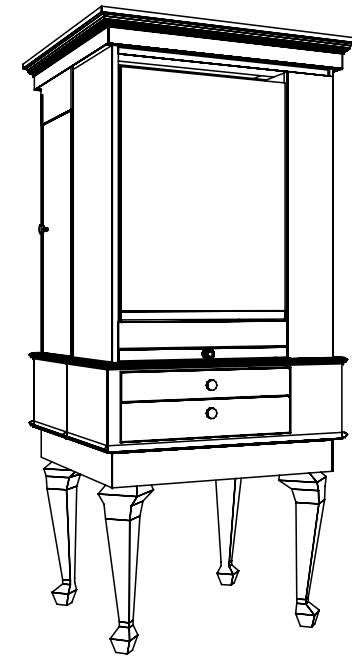
**Note:** A power strip is provided for each cabinet with a 4' grounded cord and (6) 15 amp outlets. Electrician is to cut outlet hole for cord and provide power supply.

STEP 2. Mount cabinets to the base by screwing (4) 1 1/4" wood screws up through cleats on base into cabinets. Then fasten the cabinets together with (4) 1 1/4" connector bolts through interior of cabinet at each corner.

STEP 1. Set base in final location.



STEP 3. Place crown cap on top of cabinets and fasten using (4) 1 1/2" wood screws in each corner. Screw down through cap into cabinets.



Quantity -

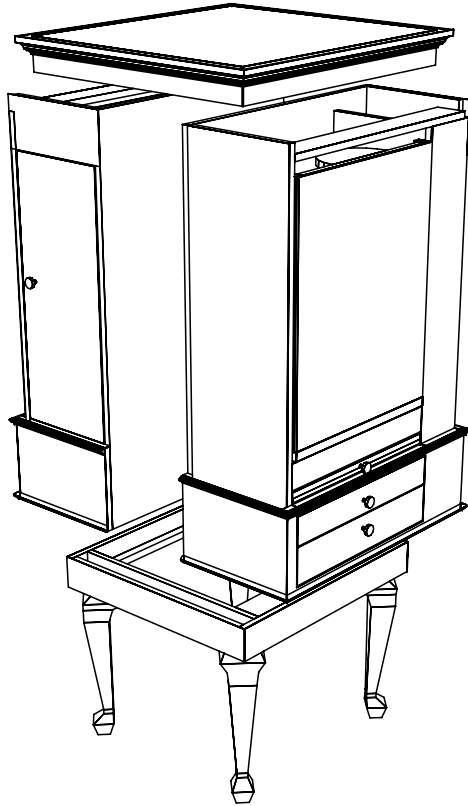
Finish Schedule - 881-34-1

Face Color -  
Top Color -  
Toe Color - (Specify)  
Pulls -  
Interior - Black  
Other (Specify) -

### Installation Notes:

1. All hardware needed for assembly is included.
2. Large items are preassembled at the factory to ensure proper alignment. Items are then disassembled into manageable sections for shipping purposes and ease of reassembly.
3. Shipping cleats need to be removed before installation. These cleats are installed to prevent damage.

<b>collins</b> Collins Manufacturing 2000 Bowser Rd. Cookeville TN 38506		
Title:		
Size:	#: 881-34	Drawn By:
Date: 09/14/06	Sheet #: 8	



**Set base unit with legs in the desired location then set the upper cabinets on top of the base. Then anchor the cabinets by screwing up through the base.**

**Adjacent cabinets and components should be assembled by fastening through the interior panels with the screws or bolts provided. Tighten securely.**

**Set the upper cap with crown molding down on top of the two cabinets and attach the cap by screwing down through the cap into the top of the cabinets.**

**Power strip is provided with a 4' grounded cord and (6) 15 amp outlets. Electrician is to cut outlet hole for cord and provide power supply.**

### **Finish Schedule - 881-34-1**

**Face Color - Limber Maple**  
**Top Color - Limber Maple**  
**Toe Color - Black**  
**Pulls - Chrome Knobs**  
**Interior - Black Melamine**  
**Other (Specify) -**

### **Installation Notes:**

- 1. All hardware needed for assembly is included.**
- 2. Large items are preassembled at the factory to ensure proper alignment. Items are then disassembled into manageable sections for shipping purposes and ease of reassembly.**
- 3. Shipping cleats need to be removed before installation. These cleats are installed to prevent damage.**

**collins**

**Collins Manufacturing**  
**2000 Bowser Rd.**  
**Cookeville TN 38506**

Title: **881-34 Bradford Island**

Size: **Mike**

Date: **9**