



## SHAKER BRADFORD STYLING ISLAND

SKU:883-36



The Shaker Bradford Two-Stylists Island has a traditional look without the same formal details as the standard Bradford line. This streamlined version is beautiful with open side shelving that could be used for retail display. This classic style can fit into any decor with just the change of the laminate color.

### TECHNICAL INFORMATION

---

- Measures: 36"W x 18"D x 90"H
- 2 Drawers
- Power strip
- 2 Adjustable glass shelves
- Mirrors, crown molding, & purse ledge
- Wiring chase, hard-wired on site
- Fully-equipped tip-out tool panel
  - Blow dryer
  - 1" Curling iron
  - 2" Curling iron
  - Flat iron
  - Clippers

### SHIPPING INFORMATION

---

Item generally ships via Freight(Truck) service

- Weight: 522 lbs
- Dimensions: 2 skids

### WARRANTY

---

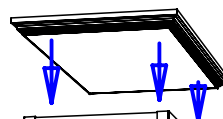
#### 3 Years:

- Ball-Bearing Drawer Slides
- Cabinet hinges

#### 1 Year:

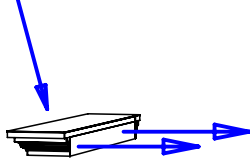
- All remaining components, unless noted otherwise, are guaranteed for a period of one year from the date of purchase.

STEP 2. Attach crown cap to top of upper cabinet with (6) 1 1/4" wood screws through top or crown cap into to upper cabinet panels.

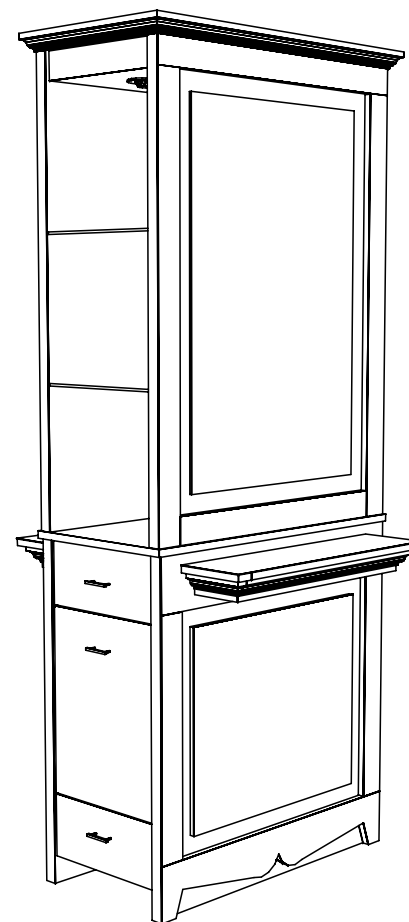
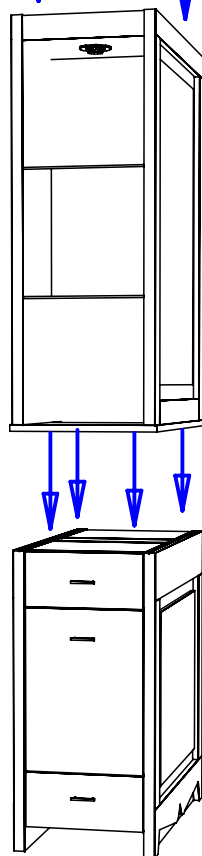


STEP 3. Set upper cabinet onto base cabinet. Mount by screwing (8) 1 1/2" wood screws with beauty washers into pre-drilled holes in the interior of the base cabinet top.

STEP 4. Attach each purse ledge with (2) 1 1/2" hex head bolts by screwing Screw through ledge into t-nuts that are inbedded in the base cabinet.



STEP 1. Set base cabinet in final location. Remove drawers from base cabinets see diagram 8.



Quantity - QTY

Finish Schedule - 883-36-1

Face Color - Face Color  
Top Color - Top Color  
Toe Color - (Specify)  
Pulls - Chrome Wire  
Interior - White/Face Color  
Other (Specify) -

### Installation Notes:

1. All hardware needed for assembly is included.
2. Large items are preassembled at the factory to ensure proper alignment. Items are then disassembled into manageable sections for shipping purposes and ease of reassembly.
3. Shipping cleats need to be removed before installation. These cleats are installed to prevent damage.

**collins**

Collins Manufacturing  
2000 Bowser Rd.  
Cookeville TN 38506

Title: CustName

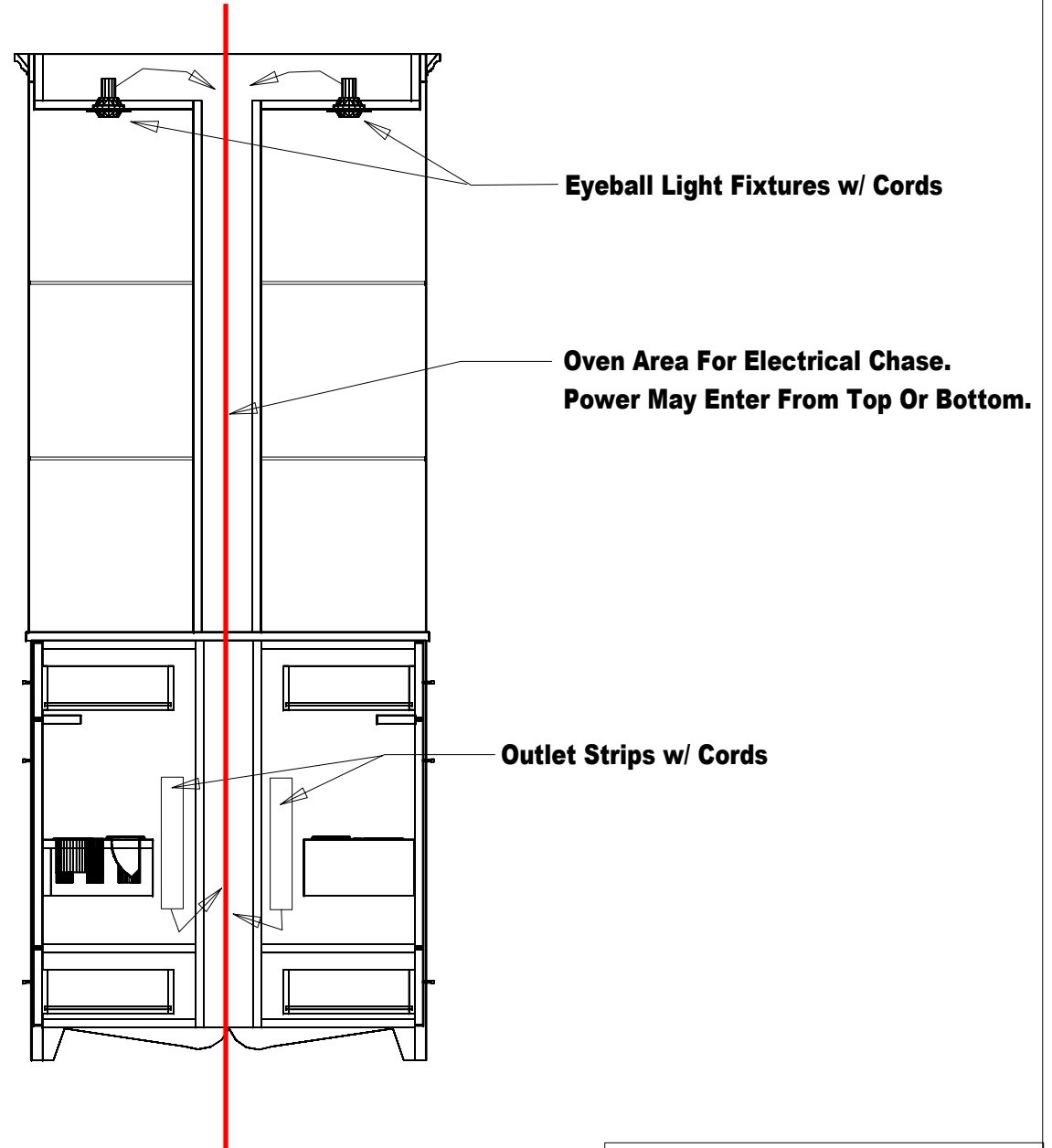
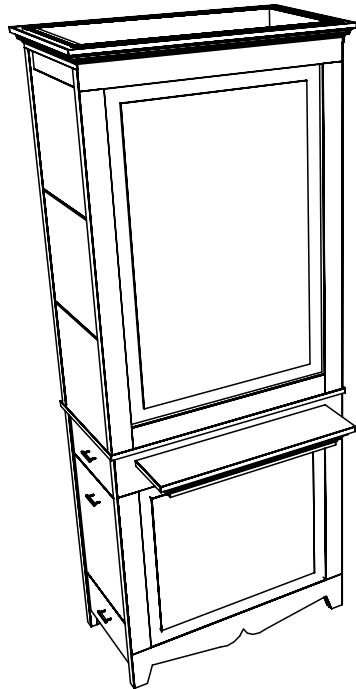
Size:

#: SoNbr

Drawn By:  
ENGR

Date: 09/30/06

Sheet #: 8



## Finish Schedule

Face Color -  
Top Color -  
Toe Color -  
Pulls -  
Interior -  
Other (Specify) -

**collins** Collins Manufacturing  
809 E 20th Street  
Cookeville TN 38501

Title: **883-36 Bradford Island**

Size: # **883-36** Drawn By:

Date: **03/19/03** Sheet #: **6**