



CAMBRIDGE STYLING ISLAND

SKU:902-64

Our Cambridge Styling Island combines vintage style with a modern flair. The rounded details are accented perfectly by sleek, aluminum legs to give this piece a timeless look.

Made for two stylists, the Cambridge Island features dual cabinets & interchangeable tool panels, which permits each stylist to work either right or left handed.

TECHNICAL INFORMATION

- Measures: 64"W x 36"D x 39"H
- 2 Stainless steel columns
- Mirror frame
- Mirror
- Glass ledge
- 4 Utility drawers
- 1 deep drawer
- Tool drawer

SHIPPING INFORMATION

Item generally ships via Freight(Truck) service

- Weight: 510 lbs
- Dimensions: 2 skids 1 box

WARRANTY

3 Years:

- Ball-Bearing Drawer Slides
- Cabinet hinges

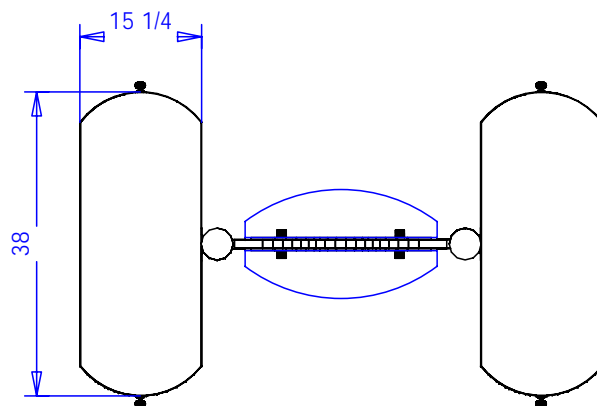
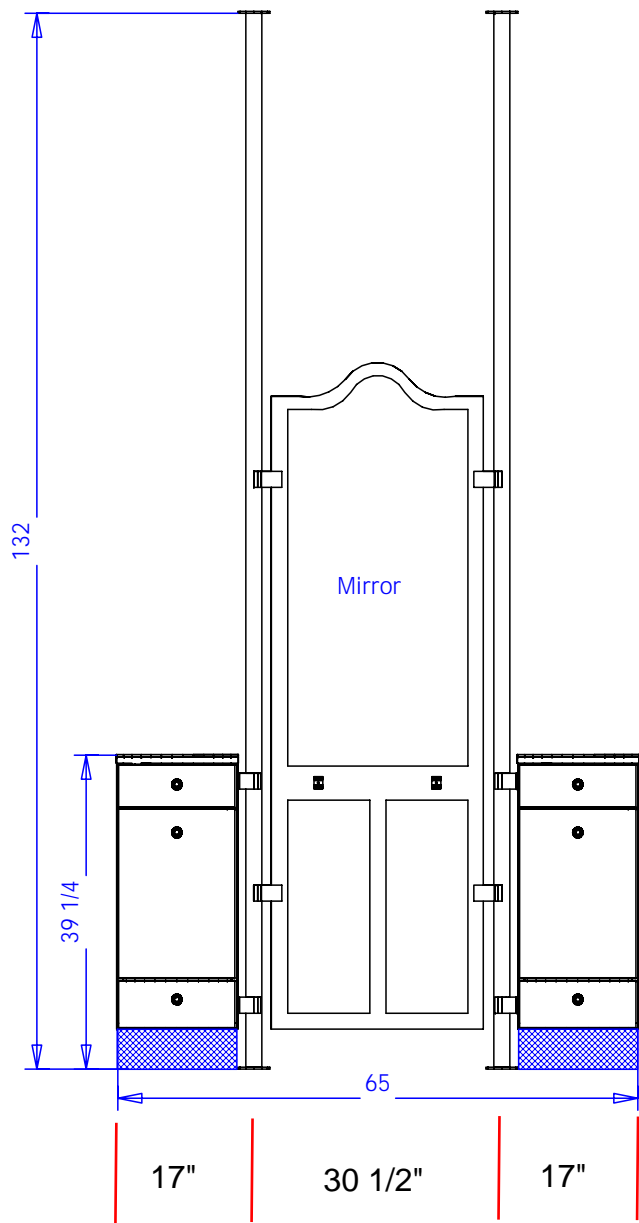
1 Year:

- All remaining components, unless noted otherwise, are guaranteed for a period of one year from the date of purchase.

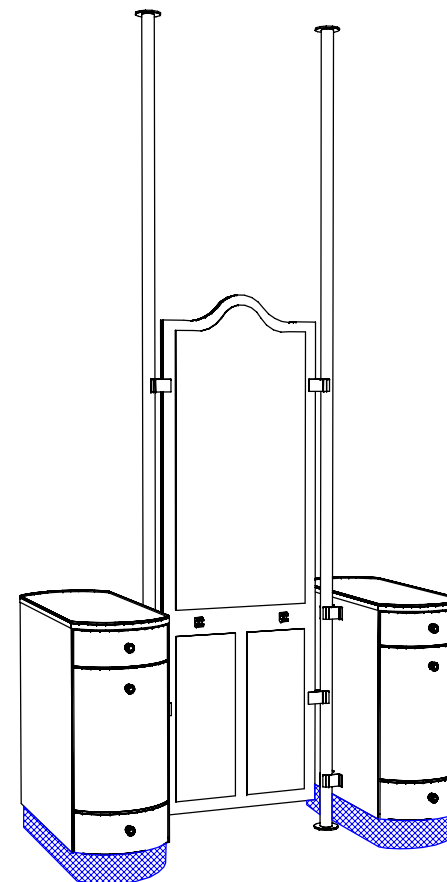


902-64 Cambridge 2-Stylist Island

This drawing is the property of Collins Manufacturing Company and is protected under copyright law.



EACH STYLIST HAS A UL APPROVED SIX-OUTLET POWER STRIP INSIDE THE CABINET.



Finish Schedule - 902-64

Face Colo
Top Color -
Toe Color - Black
Pulls - Chrome Knobs
Interior - White
Other (Specify) -

LOCATIONS OF STAINLESS STEEL MIRROR SUPPORTS -- DOUBLING AS CONDUIT FOR ELECTRIC.

collins

Collins Manufacturing
2000 Bowser Rd.
Cookeville TN 38506

Title:

Size:

#: 57361

Drawn By:

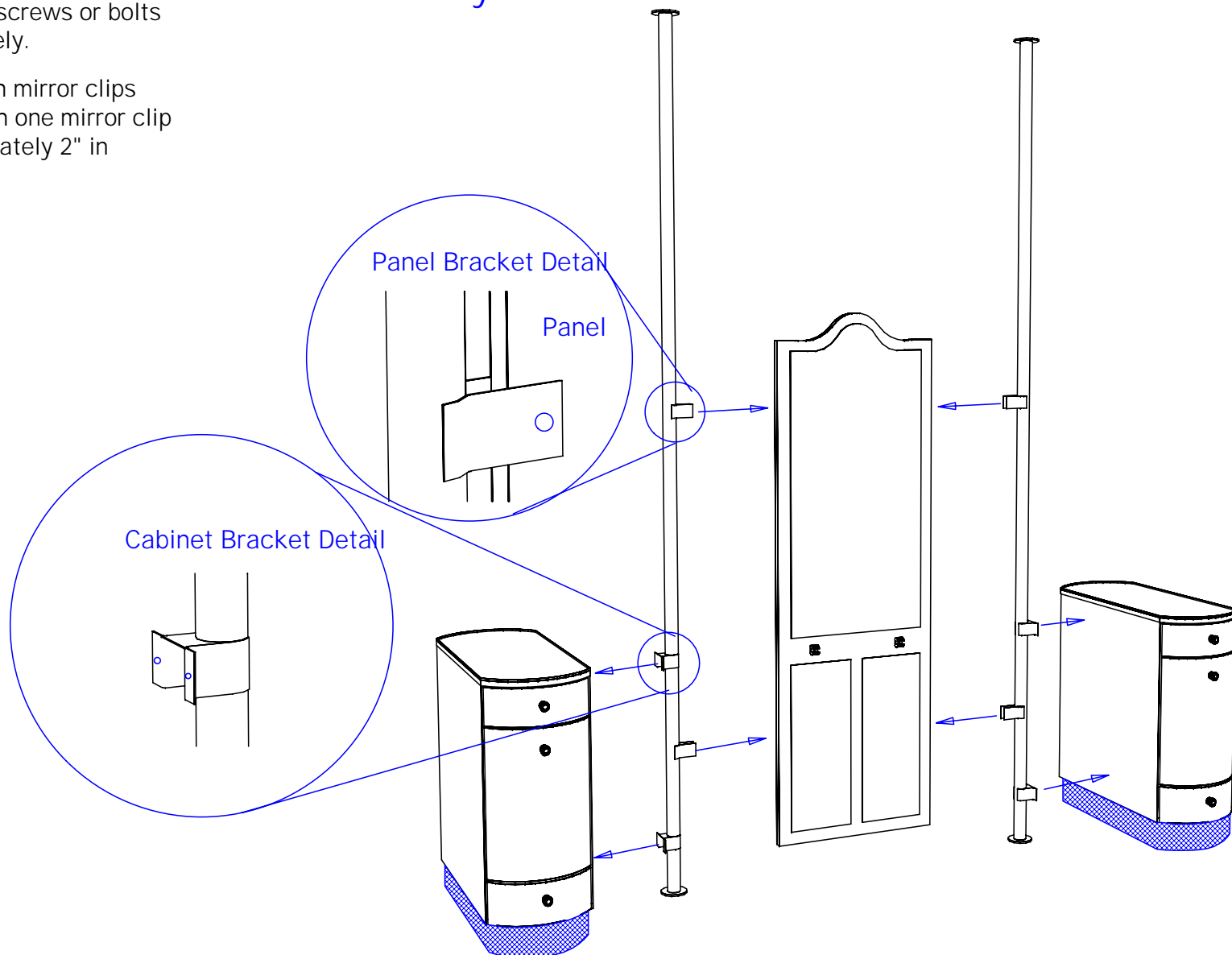
Date:

Sheet #:

Adjacent cabinets and components should be assembled by fastening through the interior panels with the screws or bolts provided. Tighten securely.

Mirrors are provided with mirror clips and wood screws. Attach one mirror clip at each corner approximately 2" in from the vertical edge.

Assembly Instructions



Finish Schedule - 902-64-3

Face Color -
Top Color -
Toe Color -
Pulls - Chrome Knobs
Interior - White
Other (Specify) -

902-64 Cambridge 2-Style Island

collins		Collins Manufacturing 2000 Bowser Rd. Cookeville TN 38506	
Title:			
Size:	#: 57361		
Date:			Sheet #: