



## ENOVA AR STYLING VANITY

SKU:963-18

From the Enova collection, this modern Styling Vanity includes all your favorite features you need for styling. The vanity showcases two beautiful steel sides that help keep items from falling from the surface work space and also extend to the floor for a dramatic look.

Pictured with the Enova AR Mirror assembly #962-30, ordered separately.



### TECHNICAL INFORMATION

- Measures: 18"W x 15"D x 42"H
- Two rectangular-steel sides
- Pull-out breadboard
- Two drawers
- Fully-equipped tilt-out tool panel w/ six-outlet power strip
- Pictured 962-30 Enova AR Mirror assembly, ordered separately

### SHIPPING INFORMATION

Item generally ships via Freight(Truck) service

- Weight: 120 lbs
- Dimensions: 30"L x 32"W x 47"H

### WARRANTY

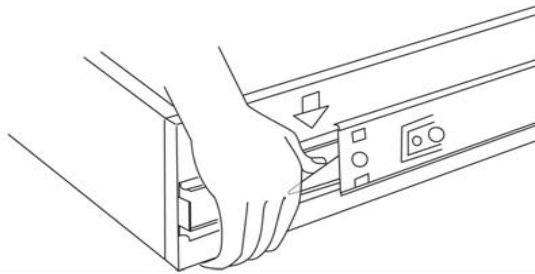
#### 3 Years:

- Ball-Bearing Drawer Slides
- Cabinet hinges

#### 1 Year:

- All remaining components, unless noted otherwise, are guaranteed for a period of one year from the date of purchase.

# THIS UNIT SHIPS FULLY ASSEMBLED



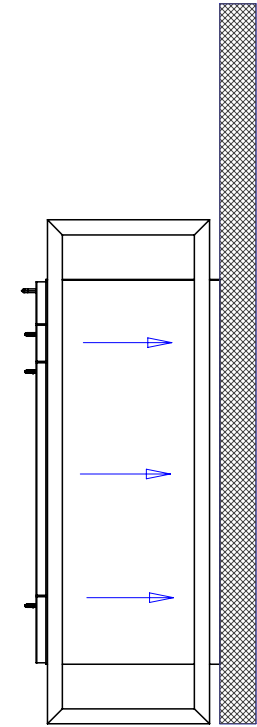
### To Remove Drawer

Pull the drawer fully open so levers are visible.  
Push "down" on the right lever(shown), and "up" on the left lever.  
Holding levers in place, pull drawer toward you.

### To Reinsert Drawer

Bring ball retainer fully forward and carefully reinsert drawer member slide into the cabinet member slide, guiding the drawer member raceway between the ball bearings.  
Completely close drawer.  
Open and close drawer to ensure the slide is fully engaged into the ball bearing track.

For safe operation, please use the included 3" wood screws to attach the cabinet to a framed wall. To conceal the screw heads you may place the screws behind the breadboard / drawers. See the illustration in the upper left corner for proper removal/reinsertion procedure for the drawer slides.



## Quantity -

Finish Schedule - 963-18

Face Color -  
Top Color -  
Toe Color -  
Reveal / Accent Color -  
Hardware - Enova  
Interior -  
Other (Specify) -

## General Notes:

1. All counter tops are to be made removable wherever possible.
2. Items must be broken into manageable sections For Shipping. Mark For Ease Of Reassembly.
3. Install Shipping Cleats Wherever Possible To Prevent Shipping Damage.
4. Purchased items Must Be Trial Fit Before Shipping.

**collins** Collins Manufacturing  
2000 Bowser Road  
Cookeville, TN 38506

Title:

Size: NTS

Drawing Number: Job

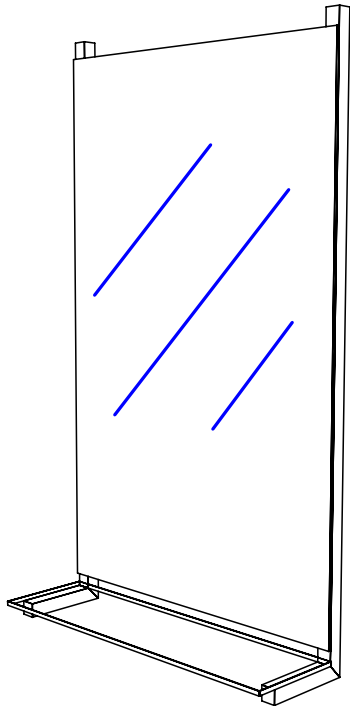
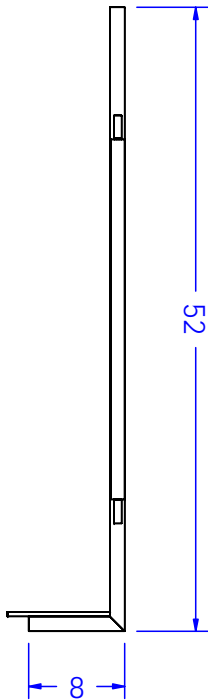
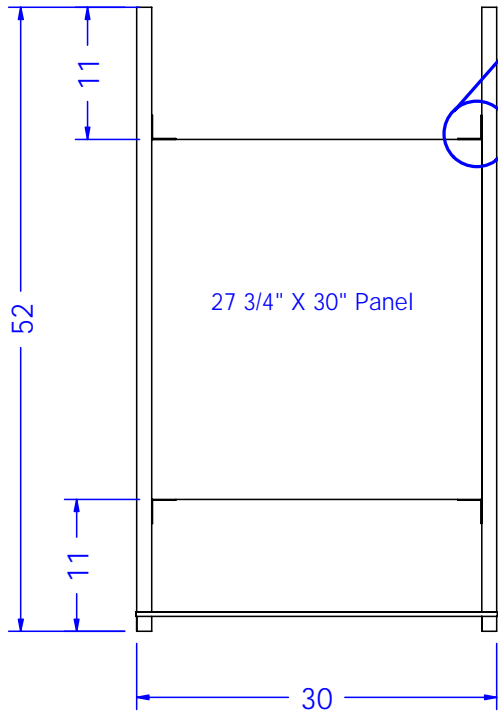
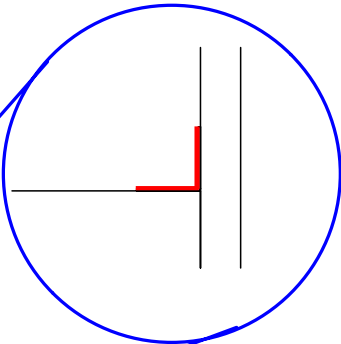
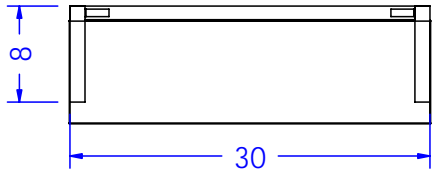
Drawn By: Zane

Date: 10/11/07

Sheet 5 of 5


To Assemble Mirror Frame:

- 1) Unit will ship in 3 pieces (left, right and center panel).
- 2) Use provided screws to attach panel to L/R metal pieces by passing through the "L" brackets that ship attached to the panel.
- 3) Once assembled, screw frame to wall using supplied 3" wood screws and finish washers through the center panel.
- 4) Mirror clips will arrive pre-attached. To install mirror set the lower portion of the mirror into the lower clips then lift the upper clips and seat mirror, finally lower the upper clips to lock the mirror in place.



<b>Finish Schedule -</b>
Face Color -
Top Color -
Toe Color -
Reveal / Accent Color -
Hardware -
Interior -
Other (Specify) -

<b>General Notes:</b>
1. All counter tops are to be made removable wherever possible.
2. Items must be broken into manageable sections For Shipping. Mark For Ease Of Reassembly.
3. Install Shipping Cleats Wherever Possible To Prevent Shipping Damage.
4. Purchased items Must Be Trial Fit Before Shipping.

 Collins Manufacturing 2000 Bowser Road Cookeville, TN 38506		
Title: <b>962-30 Installation</b>		
Size:	Drawing Number:	Drawn By:
Date:	Sheet	