



## AMATI RETAIL DISPLAY

SKU:932-24

This stylish single compact Amati Retail display case will surely catch the attention of your customers.

With four glass shelves and a storage cabinet, you can use it to display items that make a statement. The simple design also makes it easy to match with other furniture as well.

Priced as a single 24" wide section.

Also pictured are two single units joined to make a 48" retail unit. Purchase two single 24" units to make this double.

### TECHNICAL INFORMATION

---

- Measures: 24"W x 16"D x 84"H
- Adjustable glass shelves
- Soffit
- Base storage cabinets w/ 2 doors
- Installs against wall
- Priced & ordered in 24" multiples to make 24" or 48" or 72" widths

### SHIPPING INFORMATION

---

Item generally ships via Freight(Truck) service

- Weight: 405 lbs
- Dimensions: 2 SKIDS

### WARRANTY

---

#### 3 Years:

- Ball-Bearing Drawer Slides
- Cabinet hinges

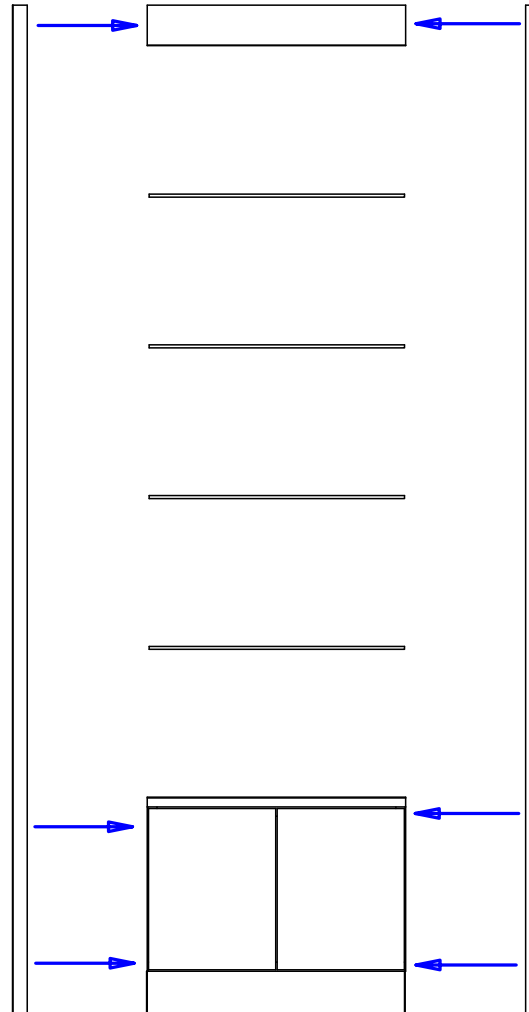
#### 1 Year:

- All remaining components, unless noted otherwise, are guaranteed for a period of one year from the date of purchase.



**TO ASSEMBLE RETAIL UNIT:**

- 1) FIRST ATTACH THE END PANELS TO BASE CABINET USING SUPPLIED CONNECTOR BOLTS, THERE WILL BE (4) BOLTS PER SIDE.
- 2) ATTACH SOFFIT TO END PANELS, THERE ARE (2) BOLTS PER SIDE.
- 3) USING CLEAR CLIPS INSTALL SHELVES AS DESIRED.



This item is attached to the wall with wood screws. 3" wood screws and decorative washers are provided for wood framed walls. Fasteners for other wall types are to be obtained locally. Screw through the back panel in locations which will be inconspicuous after installation. Suggested locations include: under shelves, behind drawers, and locations hidden by products or supplies.

**OR**

This item needs to be fastened to the floor to prevent tipping. Attach 2x blocking to the floor with fasteners appropriate to the floor type. Set the toe kick base over the floor blocking. Fasten through the toe kick base or through the cabinet bottom into the floor blocking.


**Quantity -**

**Finish Schedule -**

Face Color -  
 Top Color -  
 Toe Color -  
 Reveal / Accent Color -  
 Hardware -  
 Interior -  
 Other (Specify) -

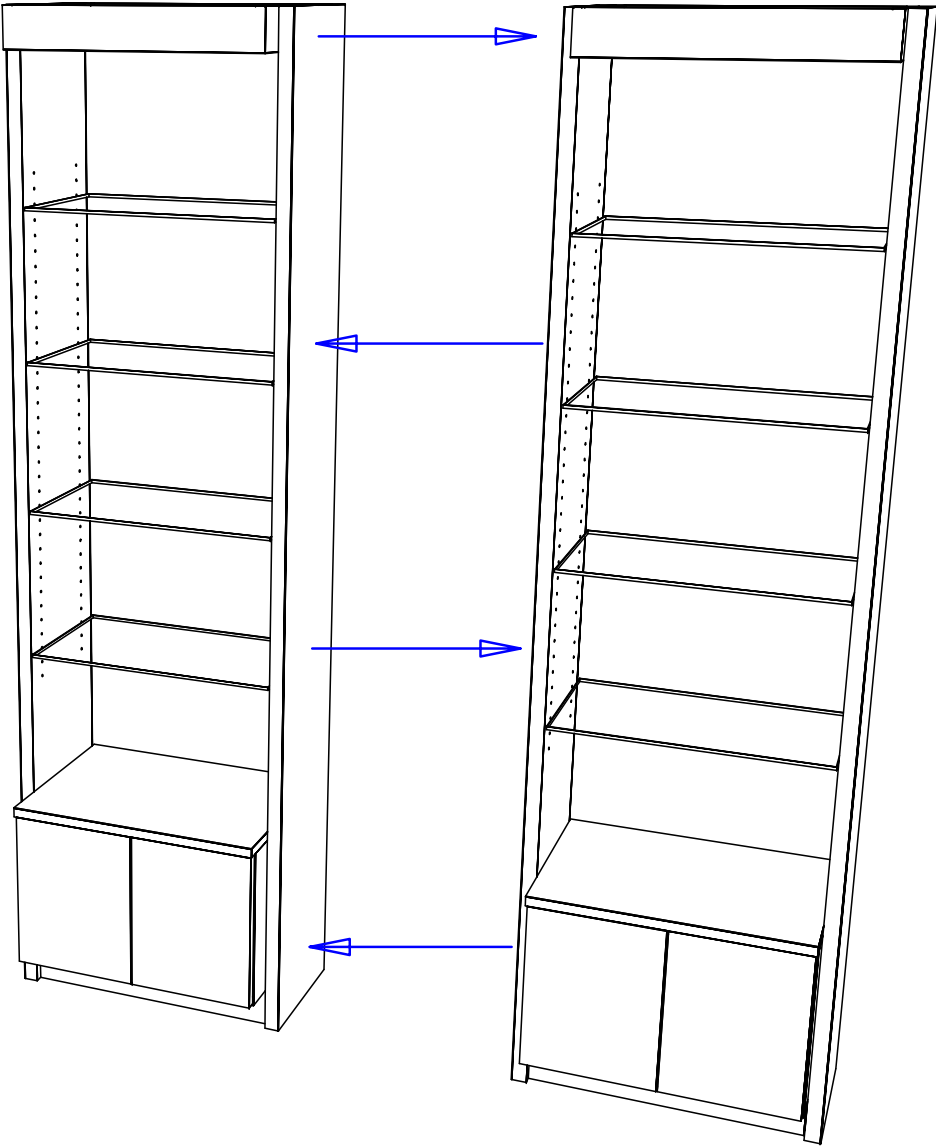
**General Notes:**

1. All counter tops are to be made removable wherever possible.
2. Items must be broken into manageable sections For Shipping. Mark For Ease Of Reassembly.
3. Install Shipping Cleats Wherever Possible To Prevent Shipping Damage.
4. Purchased items Must Be Trial Fit Before Shipping.

 Collins Manufacturing 2000 Bowser Road Cookeville, TN 38506		
Title:		
Size: NTS	Drawing Number: Job	Drawn By:
Date: 12/05/07	Sheet 5 of 6	

To assemble two or more units follow assembly direction for one unit and then join units together.

Collins can pre-drill holes and provide fasteners for joining multiple units. Simply notify Collins of the desired layout of displays when placing order.



Quantity -

Finish Schedule -

Face Color -
Top Color -
Toe Color -
Reveal / Accent Color -
Hardware -
Interior -
Other (Specify) -

General Notes:

1. All counter tops are to be made removable wherever possible.
2. Items must be broken into manageable sections For Shipping. Mark For Ease Of Reassembly.
3. Install Shipping Cleats Wherever Possible To Prevent Shipping Damage.
4. Purchased items Must Be Trial Fit Before Shipping.



Collins Manufacturing  
2000 Bowser Road  
Cookeville, TN 38506

Title:		
Size: NTS	Drawing Number: Job	Drawn By:
Date: 12/05/07	Sheet 6 of 6	