



TARESS DRYER CHAIR

SKU:931-74



Bold, yet simple, the Taress Dryer Chair is made to make an impression while remaining understated. Its clean lines and accents mean that it can be paired with any décor scheme. With its shape and thick cushioning, this chair provides comfort for all-day use. A signature stripe in the back cushion and upholstered armrests compliment the square back and seat of the overall look.

While any two colors can be used, pictured are our favorite combinations. Standard with the Collins Sol-Air Dryer.

TECHNICAL INFORMATION

- Width between the arms 21"
- Width outside the arms 26"
- Height to the top of the hood bent down 48"-57" "
- Height to the top of back 32"
- Height to the top of seat 18"
- Depth of seat 20"
- Overall depth 32"

SHIPPING INFORMATION

Item generally ships via Freight(Truck) service

- Weight: 84 lbs
- Dimensions: 1 SKID 1 CARTON

WARRANTY

5 YEARS:

- Sol Air dryer motors & hoods

3 YEARS:

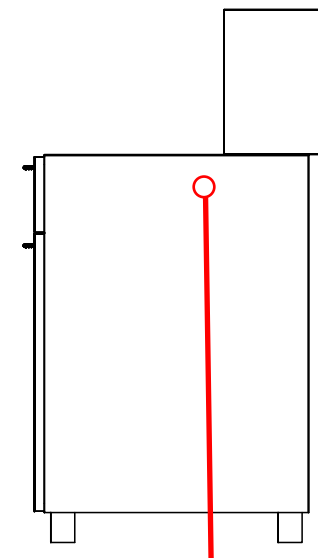
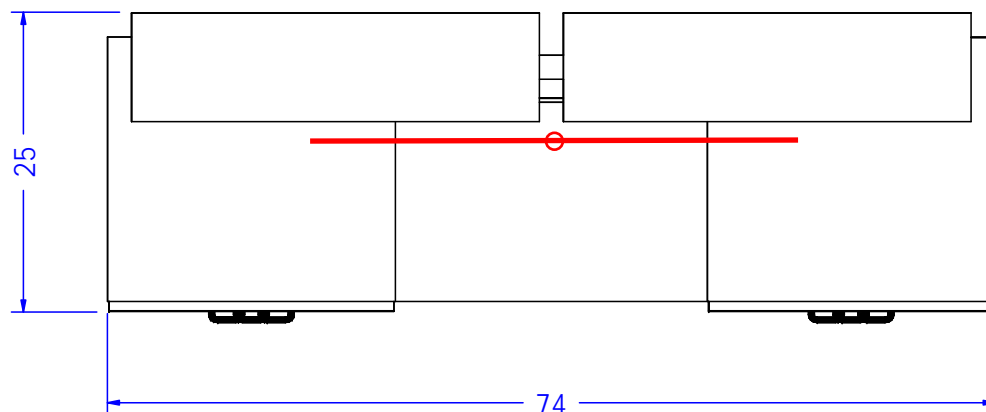
- Molded urethane arms
- Upholstery

2 YEARS:

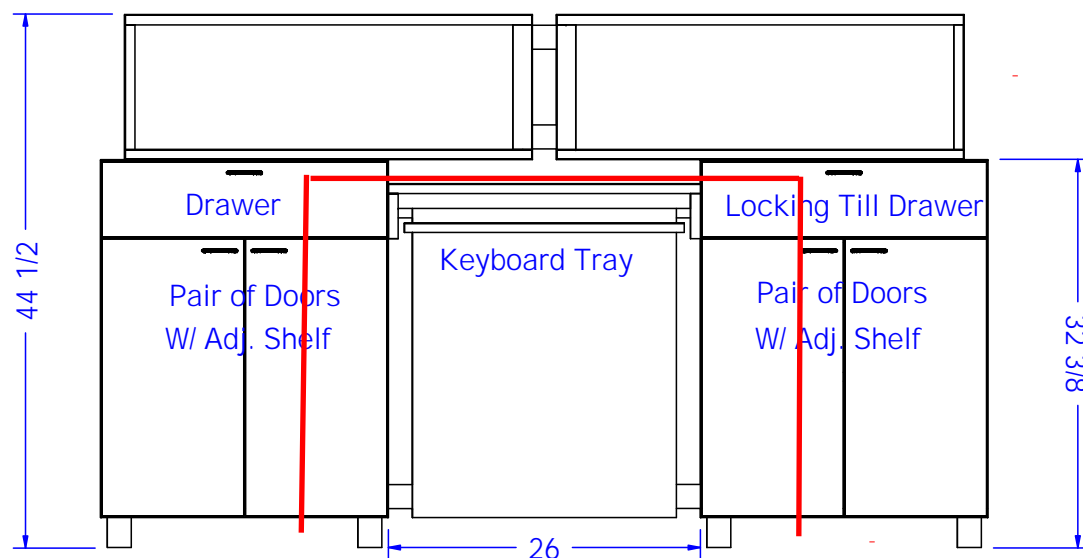
- Jeffco K500 and Collins 2200 dryers

1 YEAR:

- All remaining components, unless noted otherwise



Desk includes 5 wire grommets with anticipated wiring path shown in RED.



**Preliminary
Not For Construction**

This drawing is the property of Collins Manufacturing Company and is protected under copyright law.

Finish Schedule - 931-74-1

Face Color - Cafelle
Top Color - Cafelle
Toe Color - Silver Amati Legs
Reveal / Accent Color - Satin Stainless
Hardware - Amati Pulls
Interior - Black
Other (Specify) - Silver Steel

This drawing represents Collins Manufacturing Company's understanding of the desired item as was previously priced & ordered. Your signature indicates you have reviewed the drawing; and your approval will authorize Collins to initiate the acquisition of materials & subsequent production. More than modest changes may affect the price and/or manufacturing lead time.

- ☐ Approved as drawn.
☐ Approved w/ changes noted.
☐ Not approved - re-submit.

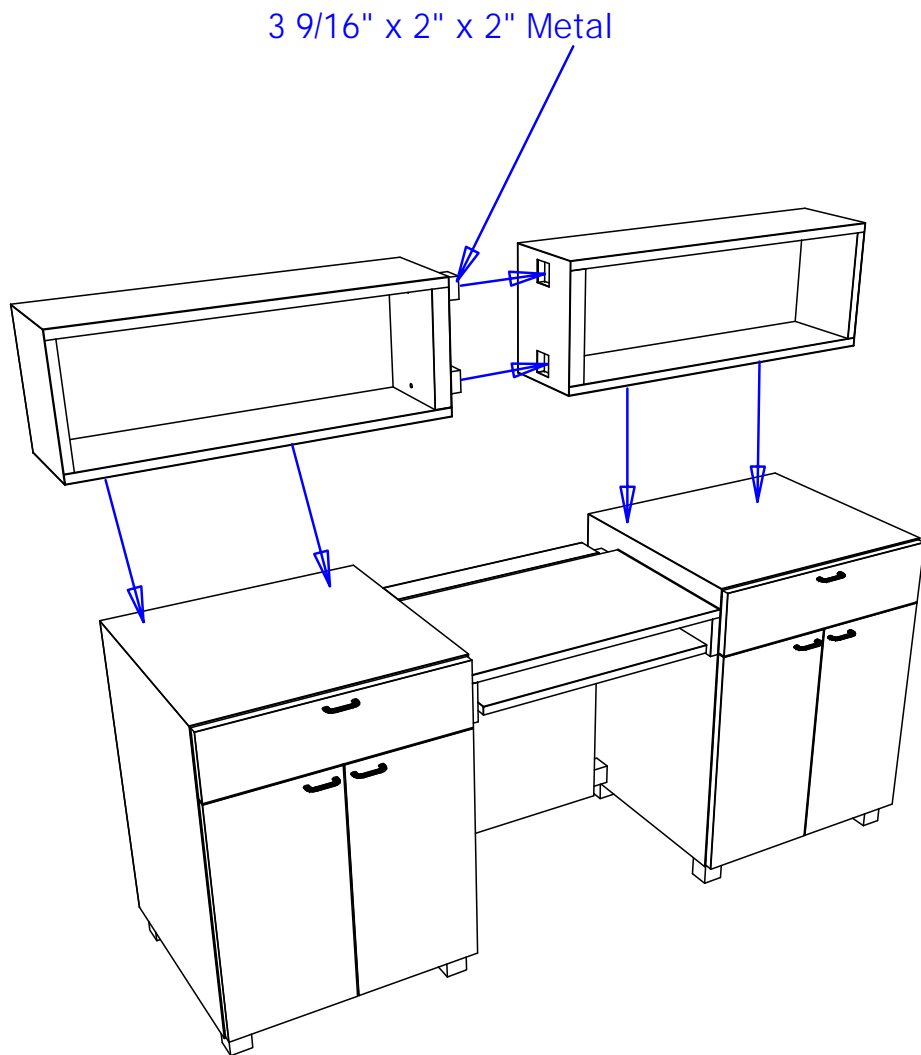
Signature _____
Company _____ Date _____

Collins Manufacturing
collins 2000 Bowser Road
Cookeville, TN 38506

Title: **931-74 Amati Galielo Desk**

Size: **NTS** Drawing Number: **72140** Drawn By: **Zane**

Date: _____ Sheet



Use the provided 1 1/4" Decorative bolts to bolt the upper cabinets to each other. Do not tighten the bolts. Use the Provided 1 1/4" hex bolts and washers to bolt through the interior top of the base cabinets into the bottom of the upper cabinets. Once all bolts have been started go back and firmly tighten the bolts.

Finish Schedule - 931-74-1

Face Color - Cafelle
 Top Color - Cafelle
 Toe Color - Silver Amati Legs
 Reveal / Accent Color - Satin Stainless
 Hardware - Amati Pulls
 Interior - Black
 Other (Specify) - Silver Steel

General Notes:

1. All counter tops are to be made removable wherever possible.
2. Items must be broken into manageable sections for shipping. Mark for ease of reassembly.
3. Install Shipping Cleats wherever possible to prevent shipping damage.
4. Purchased items must be trial fit before shipping.



Collins Manufacturing
 2000 Bowser Road
 Cookeville, TN 38506

Title: **931-74 Desk Assembly**

Size: **NTS**

Drawing Number: **72140**

Drawn By: **Zane**

Date:

Sheet