



## ECONO QUAD

SKU:2143-96

The Econo Quad is a full-featured styling station, made for four students. Equipped with extra counter space and a storage cabinet, this station is made to get your students ready to be professionals.

### TECHNICAL INFORMATION

---

- Measures 96"L x 32"D x 36"H x 66"H
- 270 Degree Hinges
- Mirror
- Tool holders
- Duplex electrical outlet
- Storage cabinet w/ padlock

### SHIPPING INFORMATION

---

- 1 Skid
- Dimensions: 32"W x 96"L x 40"H
- Weight: 350 lbs
- 1 Skid
- Dimensions: 32"W x 48"L x 45"H
- Weight: 210 lbs
- 1 Skid
- Dimensions: 32"W x 48"L x 45"H
- Weight: 230 lbs

### WARRANTY

---

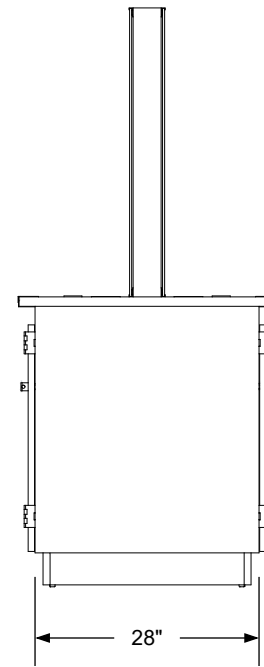
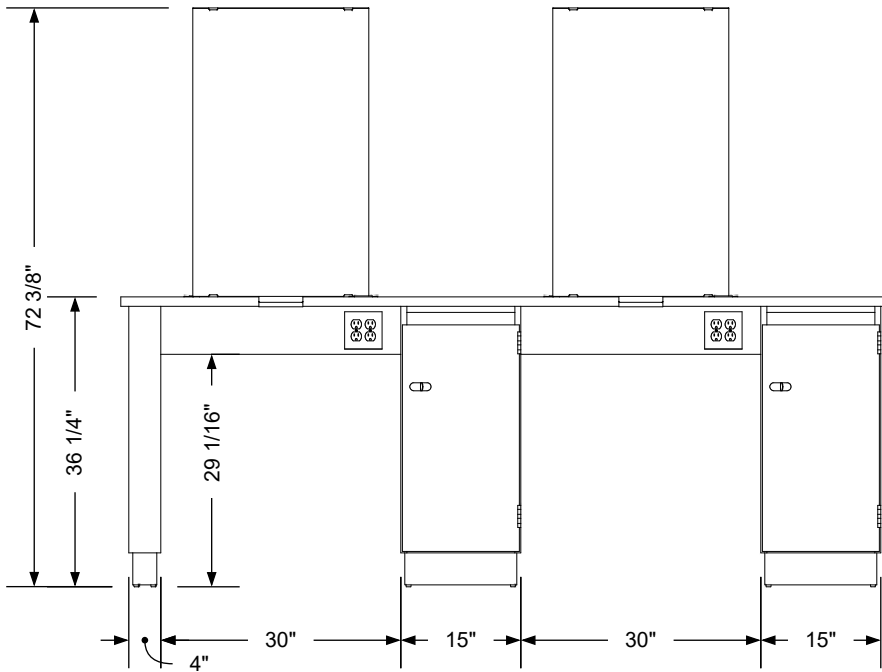
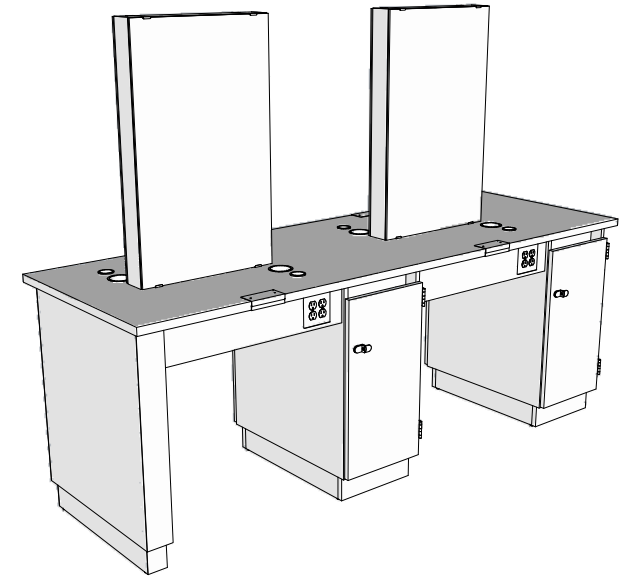
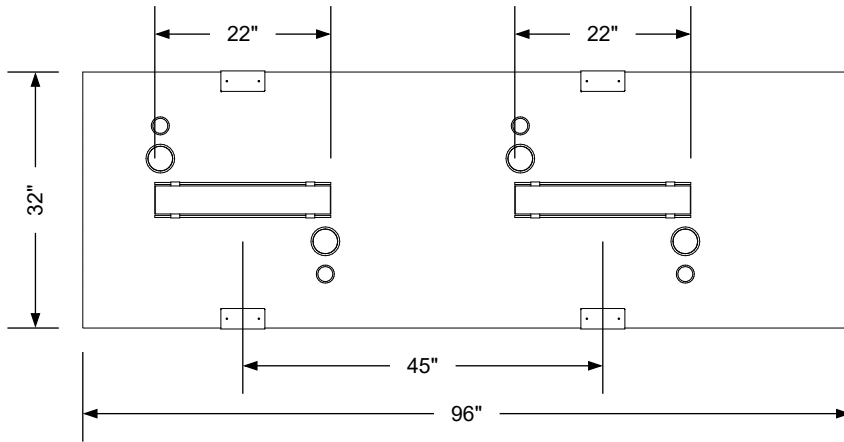
#### 3 Years:

- Ball-Bearing Drawer Slides
- Cabinet hinges

#### 1 Year:

- All remaining components, unless noted otherwise, are guaranteed for a period of one year from the date of purchase.






### Additional Information

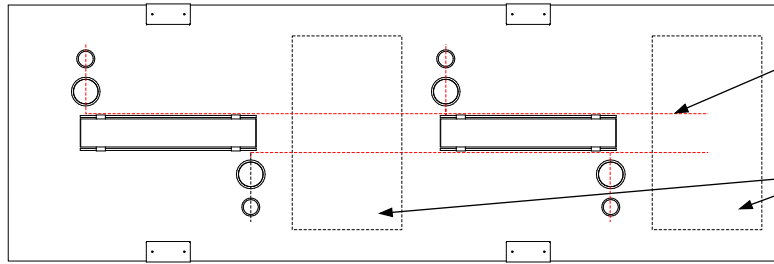
Assembly required - yes  
 Electrical required - yes  
 Plumbing required - no  
 Wall blocking required - no  
 COM yardage/laminate usage - 112 sf  
 4" h laminated plywood toe + 1/4" h glides  
 Other (specify) - n/a  
 Other (specify) - n/a

### Specification Drawing

This **Specification Drawing** is intended for communicating the basic description, function, appearance, dimensions, features, and installation of an item as manufactured by Collins Manufacturing Company. Because this drawing does not contain project specific information such as quantities, finishes, or options, it is not an approval drawing and does not require a signature. This drawing remains the property of Collins Manufacturing Company and must not be used against the interests of Collins Manufacturing Company.

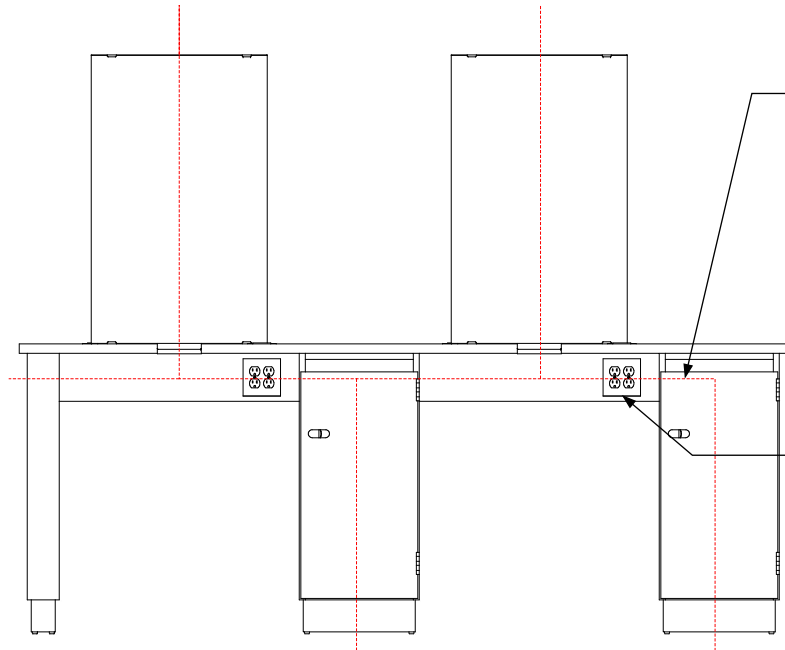
### Product Information

		Collins Manufacturing 2000 Bowser Road Cookeville, TN 38506	
Name: <b>Econo Quad</b>			
Size: <b>NTS</b>	Part Number: <b>2143-96</b>	Drawn By: <b>Eng</b>	
Prepared Date: <b>5/11/20</b>	Revision Date: <b>Date</b>	Revision Number: <b>Rev #</b>	Sheet: <b>1 of 2</b>



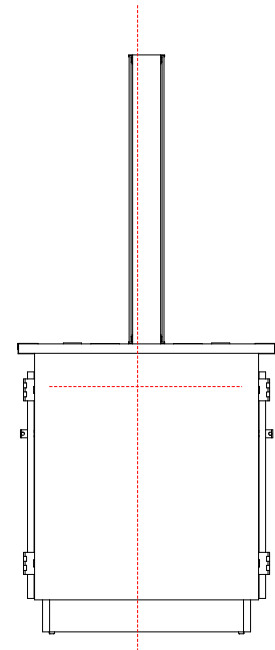
Pathways for electrical.

Electrical connections may be made as long as the stub outs fall within the footprint of the toe kicks. However, some minor modifications may be necessary. Also, electrical power may be ran through the cabinets of adjacent stations for inline arrangements.



The electrician is responsible for connecting power to the fourplex outlets up from the floor or down from the ceiling along the indicated path. Provide a 20 amp, switched outlet for each student station (four per quad station).

The island includes 20 amp fourplex outlets mounted below the countertop in the stretchers. The tools plug into these outlets.



### Electrical stub out detail

#### Additional Information

Assembly required - yes  
 Electrical required - yes  
 Plumbing required - no  
 Wall blocking required - no  
 COM yardage/laminate usage - 112 sf  
 4" h laminated plywood toe + 1/4" h glides  
 Other (specify) - n/a  
 Other (specify) - n/a

#### Specification Drawing

This **Specification Drawing** is intended for communicating the basic description, function, appearance, dimensions, features, and installation of an item as manufactured by Collins Manufacturing Company. Because this drawing does not contain project specific information such as quantities, finishes, or options, it is not an approval drawing and does not require a signature. This drawing remains the property of Collins Manufacturing Company and must not be used against the interests of Collins Manufacturing Company.

#### Product Information

		Collins Manufacturing 2000 Bowser Road Cookeville, TN 38506	
Name: <b>Econo Quad</b>			
Size: <b>NTS</b>	Part Number: <b>2143-96</b>	Drawn By: <b>Eng</b>	
Prepared Date: <b>5/11/20</b>	Revision Date: <b>Date</b>	Revision Number: <b>Rev #</b>	Sheet: <b>2 of 2</b>