



AMATI RETAIL

SKU:2002-24

This stylish compact Amati Retail display case will surely catch the attention of your customers.

With four glass shelves and a storage cabinet, you can use it to display items that make a statement. The simple design also makes it easy to match with other furniture as well.

TECHNICAL INFORMATION

- 24"W x 15"D x 84"H
- featuring adjustable glass shelves
- a base storage cabinet with a pair of doors
- made in several different size options

SHIPPING INFORMATION

Item generally ships via Freight(Truck) service

- Weight: 225 lbs
- Dimensions: 2 pallets

WARRANTY

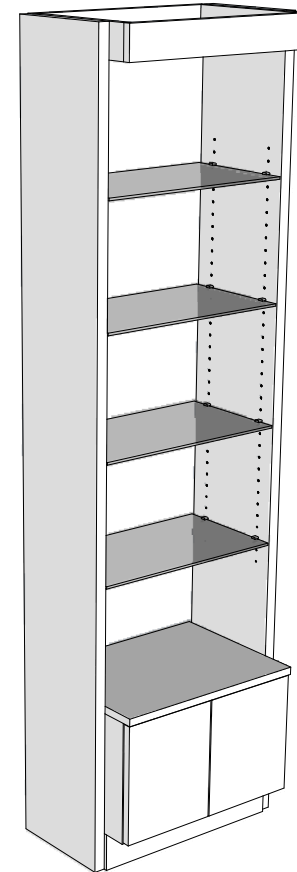
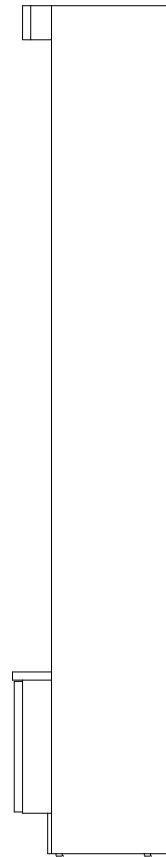
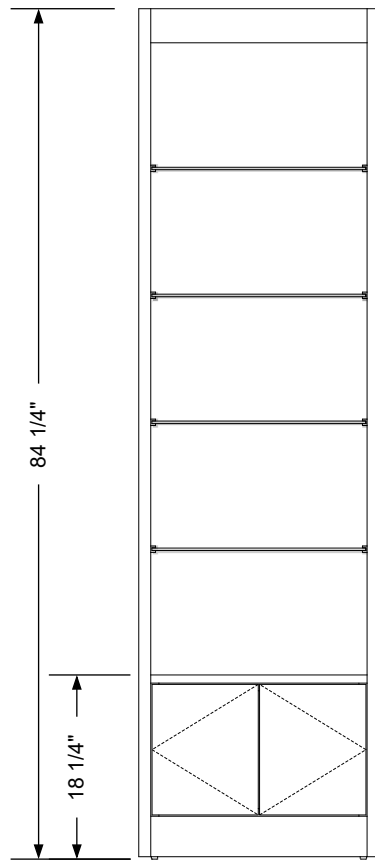
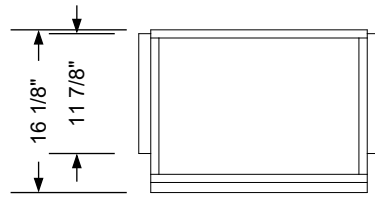
3 Years:

- Ball-Bearing Drawer Slides
- Cabinet hinges

1 Year:

- All remaining components, unless noted otherwise, are guaranteed for a period of one year from the date of purchase.






Additional Information

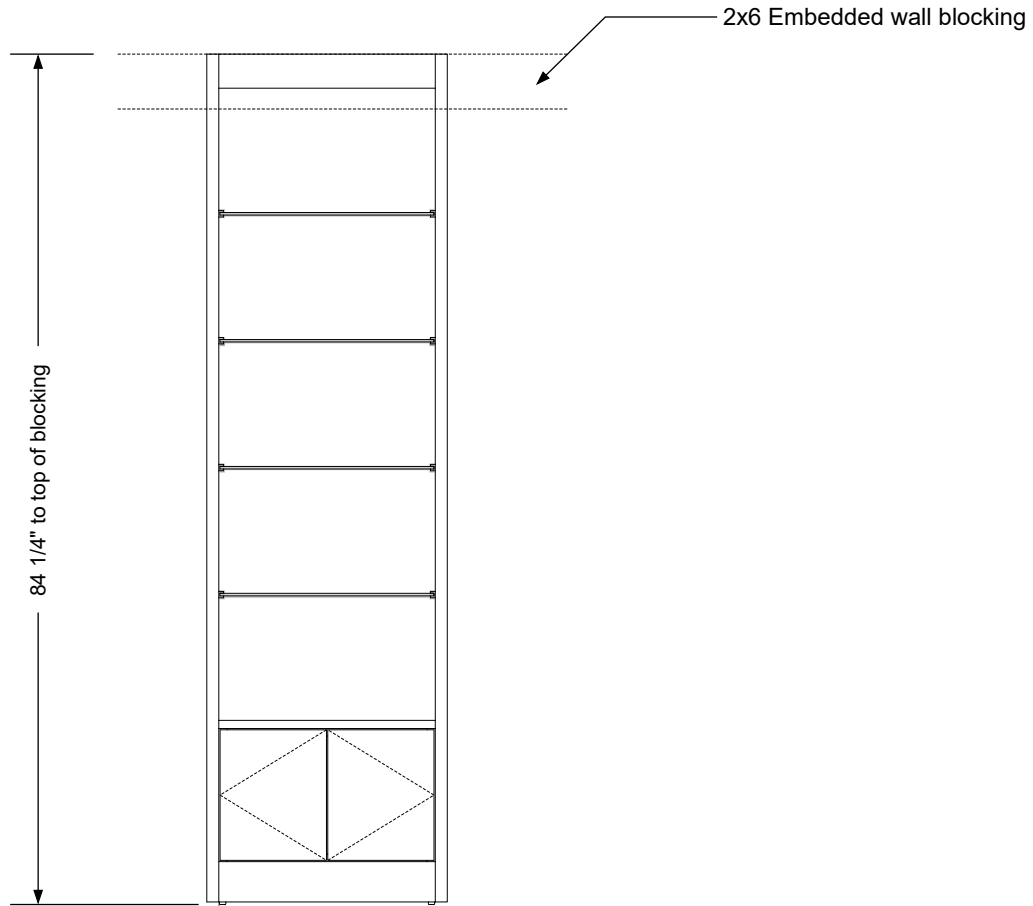
Assembly required - yes
 Electrical required - no
 Plumbing required - no
 Wall blocking required - yes
 COM yardage/laminate usage - 54 sf
 4" h laminated plywood toe + 1/4" h glides
 Other (specify) - n/a
 Other (specify) - n/a

Specification Drawing

This **Specification Drawing** is intended for communicating the basic description, function, appearance, dimensions, and features of an item as manufactured by Collins Manufacturing Company. Because this drawing does not contain project specific information such as quantities, finishes, or options, it is not an approval drawing and does not require a signature. This drawing remains the property of Collins Manufacturing Company and must not be used against the interests of Collins Manufacturing Company.

Product Information

		Collins Manufacturing 2000 Bowser Road Cookeville, TN 38506	
Name: Amati Retail			
Size: NTS	Part Number: 2002-24	Drawn By: Eng	
Prepared Date: 4/8/20	Revision Date: Date	Revision Number: Rev #	Sheet: 1 of 2



Wall blocking detail


Additional Information

Assembly required - yes
 Electrical required - no
 Plumbing required - no
 Wall blocking required - yes
 COM yardage/laminate usage - 54 sf
 4"h laminated plywood toe + 1/4"h glides
 Other (specify) - n/a
 Other (specify) - n/a

Specification Drawing

This **Specification Drawing** is intended for communicating the basic description, function, appearance, dimensions, and features of an item as manufactured by Collins Manufacturing Company. Because this drawing does not contain project specific information such as quantities, finishes, or options, it is not an approval drawing and does not require a signature. This drawing remains the property of Collins Manufacturing Company and must not be used against the interests of Collins Manufacturing Company.

Product Information

		Collins Manufacturing 2000 Bowser Road Cookeville, TN 38506	
Name: Amati Retail			
Size: NTS	Part Number: 2002-24	Drawn By: Eng	
Prepared Date: 4/8/20	Revision Date: Date	Revision Number: Rev #	Sheet: 2 of 2