



ILLUMINATED RETAIL

SKU:2005-36

Illuminated Retail w/ storage below

TECHNICAL INFORMATION

- 36"W x 17"D x 70.5"H
- Powder coated steel frame
- Frosted glass back
- Shelving that is lit up with strip LED lighting to highlight the retail offerings
- Storage below for excess products

SHIPPING INFORMATION

Item generally ships via Freight(Truck) service

- Weight: 350 lbs
- Dimensions: 48"L x 32"W x 78"H

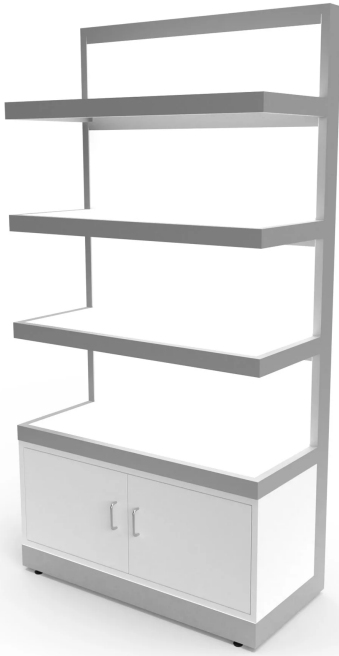
WARRANTY

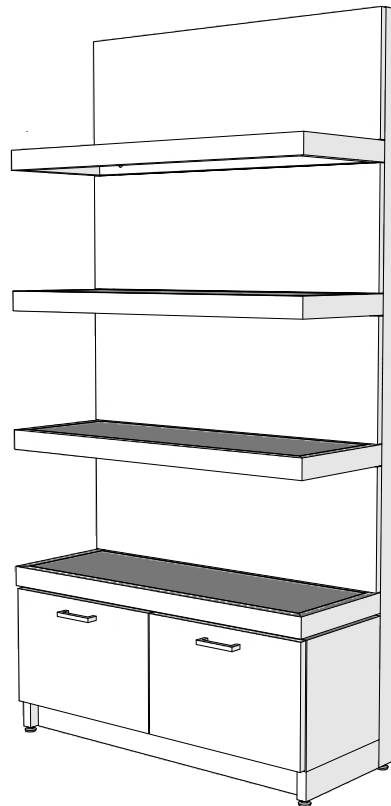
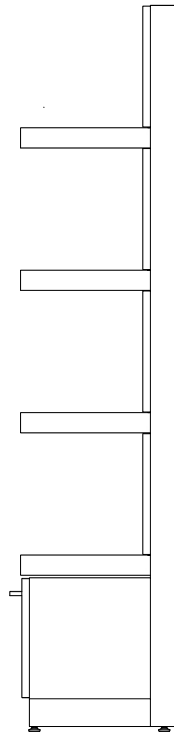
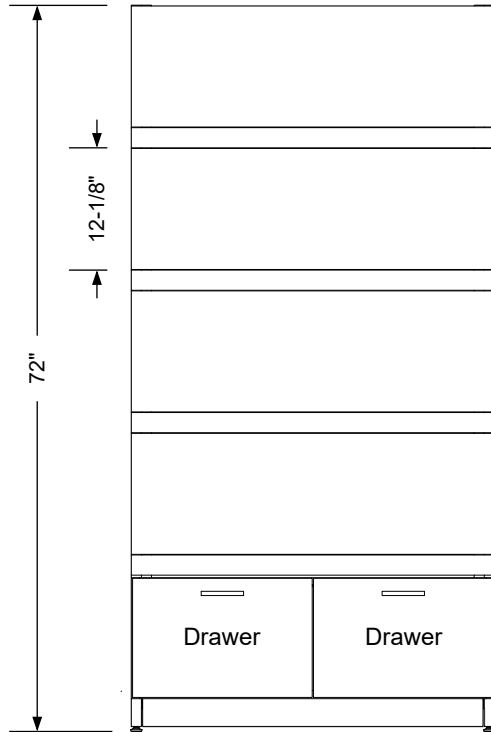
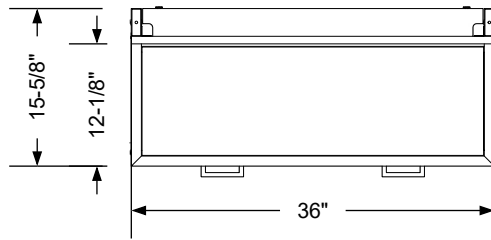
3 Years:

- Ball-Bearing Drawer Slides
- Cabinet hinges

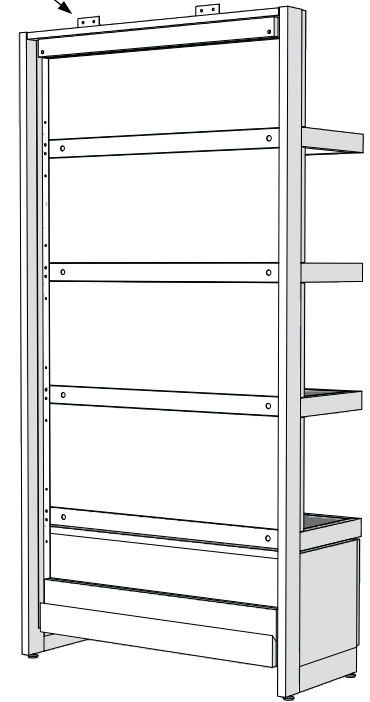
1 Year:

- All remaining components, unless noted otherwise, are guaranteed for a period of one year from the date of purchase.

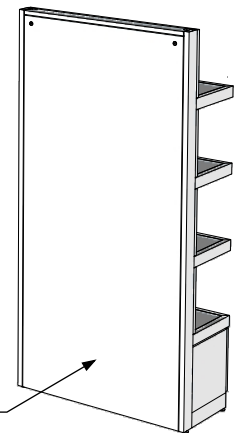




Supplied L Brackets to Secure to wall



*ADD-ON Finished Back Convert to Island Retail



Additional Information

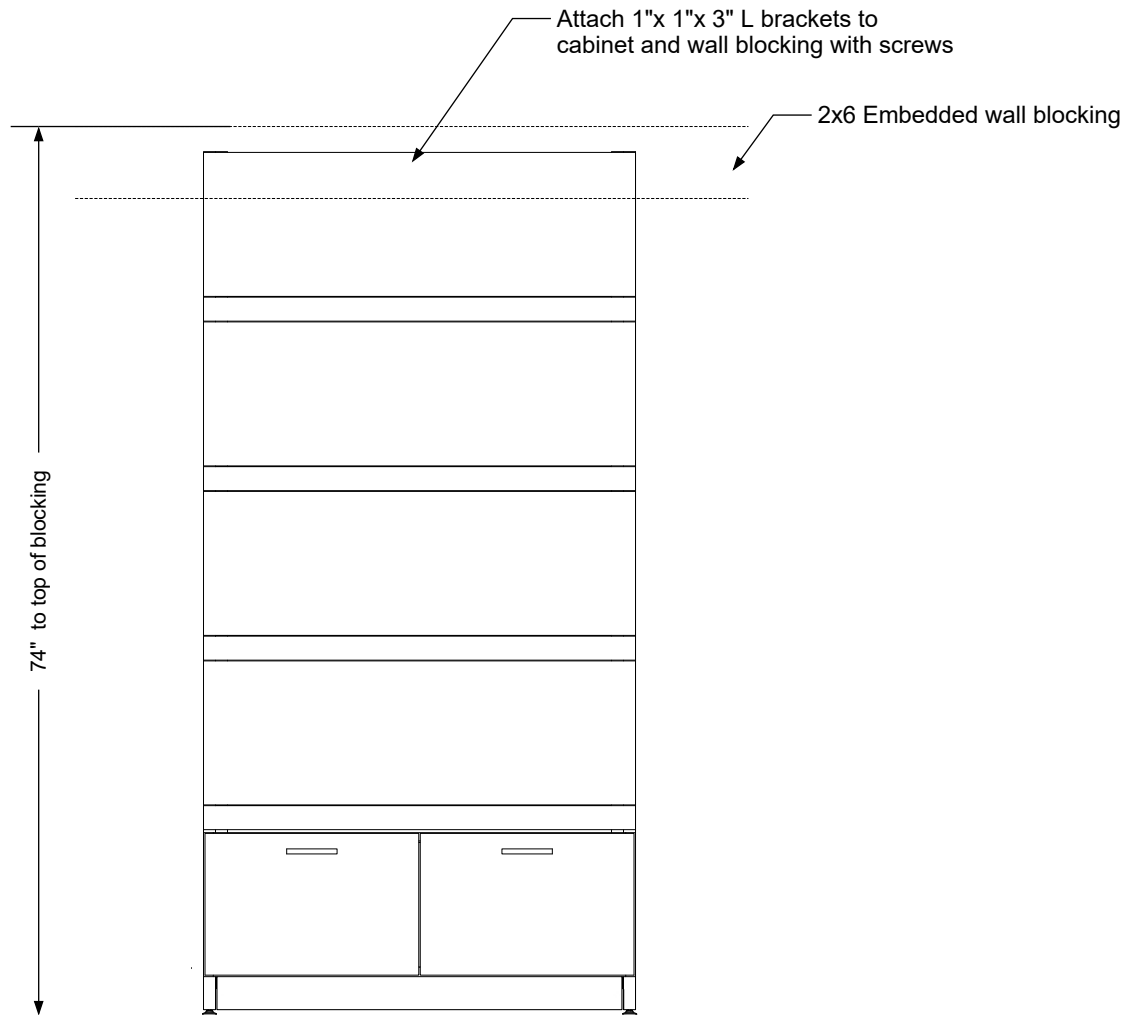
Assembly required - yes
 Electrical required - yes
 Plumbing required - n/a
 Wall blocking required - yes
 COM yardage/laminate usage - 38 sf
 Metal Frame + 1/2" h Adj. glides
 Other (specify) - n/a
 Other (specify) - n/a

Specification Drawing

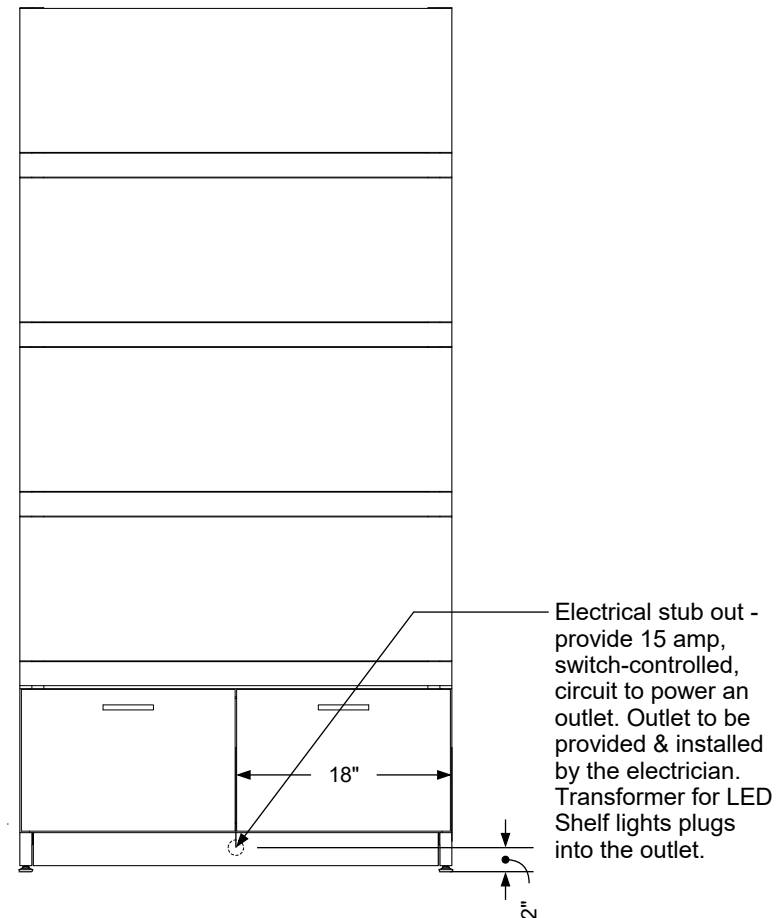
This **Specification Drawing** is intended for communicating the basic description, function, appearance, dimensions, features, and installation of an item as manufactured by Collins Manufacturing Company. Because this drawing does not contain project specific information such as quantities, finishes, or options, it is not an approval drawing and does not require a signature. This drawing remains the property of Collins Manufacturing Company and must not be used against the interests of Collins Manufacturing Company.

Product Information

		Collins Manufacturing 2000 Bowser Road Cookeville, TN 38506	
Name: Illuminated Retail			
Size: NTS	Part Number: 2005-36	Drawn By: Eng	
Prepared Date: 4/20/20	Revision Date: 8/4/20	Revision Number: Rev 1	Sheet: 1 of 2



Wall blocking detail



Electrical stub out detail

Additional Information

Assembly required - yes
 Electrical required - yes
 Plumbing required - n/a
 Wall blocking required - yes
 COM yardage/laminate usage - 38 sf
 Metal Legs + 1/2"h Adj. glides
 Other (specify) - n/a
 Other (specify) - n/a

Specification Drawing

This **Specification Drawing** is intended for communicating the basic description, function, appearance, dimensions, features, and installation of an item as manufactured by Collins Manufacturing Company. Because this drawing does not contain project specific information such as quantities, finishes, or options, it is not an approval drawing and does not require a signature. This drawing remains the property of Collins Manufacturing Company and must not be used against the interests of Collins Manufacturing Company.

Product Information

		Collins Manufacturing 2000 Bowser Road Cookeville, TN 38506	
Name: Illuminated Retail			
Size: NTS	Part Number: 2005-36	Drawn By: Eng	
Prepared Date: 4/20/20	Revision Date: 8/5/20	Revision Number: Rev 1	Sheet: 2 of 2