



FCC ISLAND

SKU:2127-38



Our FCC Styling Island is built to help your students prep for success. This stylish station features two back-to-back stylist stations and plenty of storage options including drawers, shelving and a convenient ledge for essentials. It also has a built in tool holder on each side to keep your students organized.

TECHNICAL INFORMATION

- 38"W x 38.5"D x 90"H
- Tool holders
- Drawer
- Work shelf
- Fourplex outlet
- Storage for mannequin heads for each student

SHIPPING INFORMATION

Item generally ships via Freight(Truck) service

- Weight: 680 lbs
- Dimensions: 2 pallets

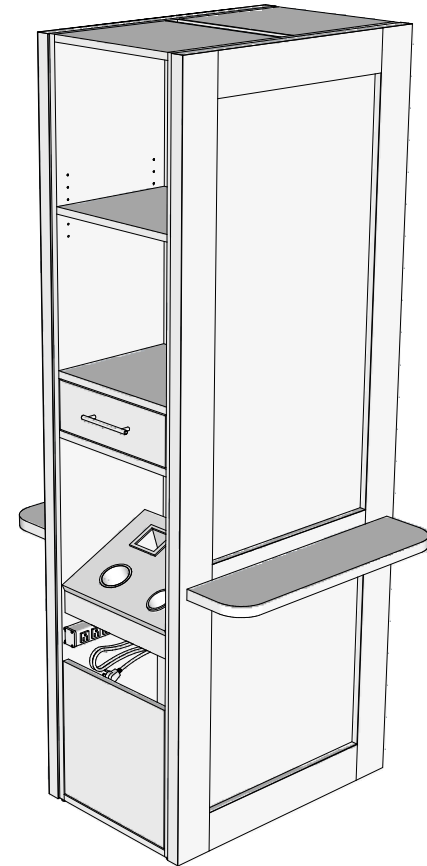
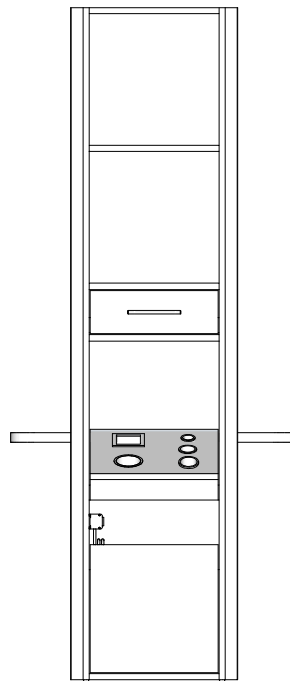
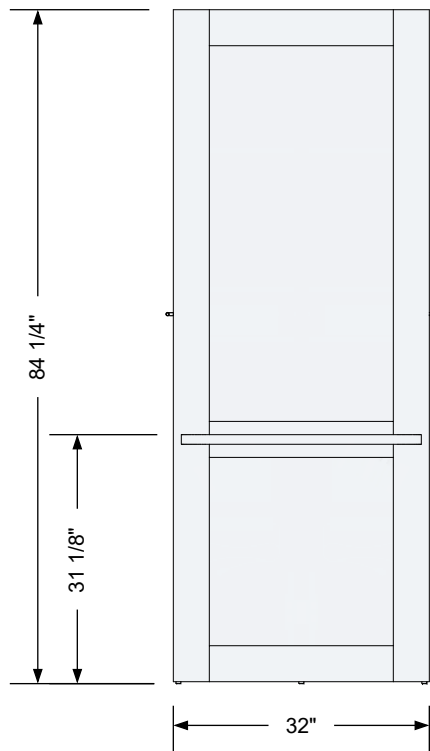
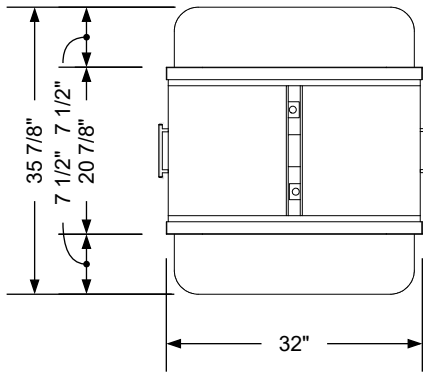
WARRANTY

3 Years:

- Ball-Bearing Drawer Slides
- Cabinet hinges

1 Year:

- All remaining components, unless noted otherwise, are guaranteed for a period of one year from the date of purchase.



Additional Information

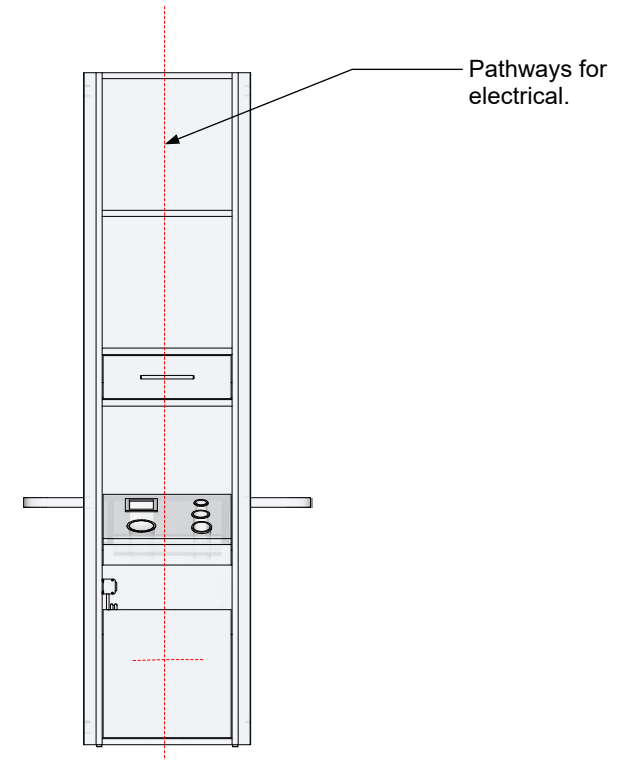
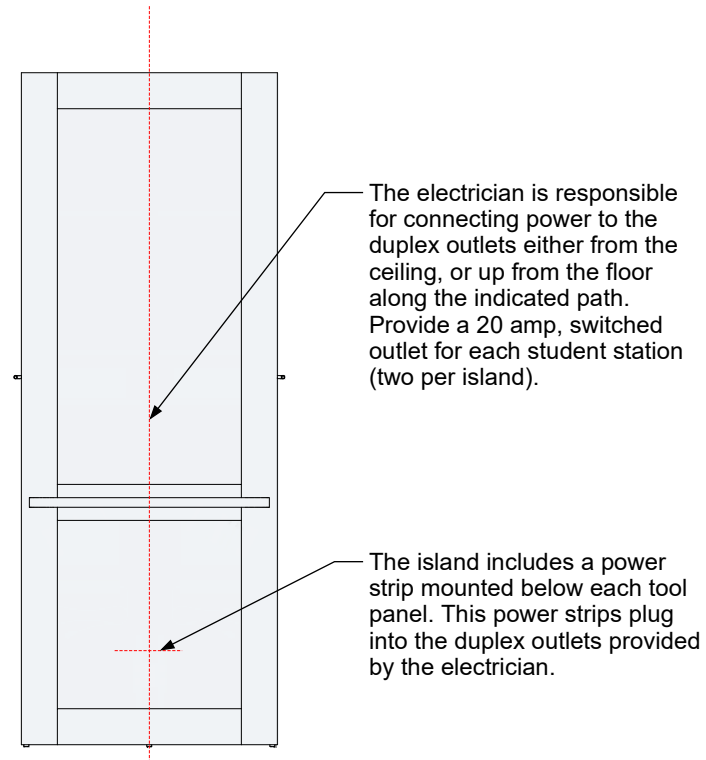
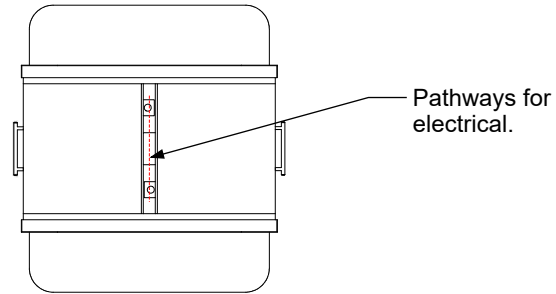
Assembly required - yes
 Electrical required - yes
 Plumbing required - no
 Wall blocking required - no
 COM yardage/laminate usage - 182 sf
 No toe kick base + 1/4" h glides
 Other (specify) - n/a
 Other (specify) - n/a

Specification Drawing

This **Specification Drawing** is intended for communicating the basic description, function, appearance, dimensions, features, and installation of an item as manufactured by Collins Manufacturing Company. Because this drawing does not contain project specific information such as quantities, finishes, or options, it is not an approval drawing and does not require a signature. This drawing remains the property of Collins Manufacturing Company and must not be used against the interests of Collins Manufacturing Company.

Product Information

collins Collins Manufacturing 2000 Bowser Road Cookeville, TN 38506			
Name: FCC Island			
Size: NTS	Part Number: 2127-38	Drawn By: Eng	
Prepared Date: 5/6/20	Revision Date: 4/21/22	Revision Number: Rev #1	Sheet: 1 of 1



Electrical stub out detail


Additional Information

Assembly required - yes
 Electrical required - yes
 Plumbing required - no
 Wall blocking required - no
 COM yardage/laminate usage - 182 sf
 No toe kick base + 1/4" h glides
 Other (specify) - n/a
 Other (specify) - n/a

Specification Drawing

This **Specification Drawing** is intended for communicating the basic description, function, appearance, dimensions, features, and installation of an item as manufactured by Collins Manufacturing Company. Because this drawing does not contain project specific information such as quantities, finishes, or options, it is not an approval drawing and does not require a signature. This drawing remains the property of Collins Manufacturing Company and must not be used against the interests of Collins Manufacturing Company.

Product Information

		Collins Manufacturing 2000 Bowser Road Cookeville, TN 38506	
Name: FCC Island			
Size: NTS	Part Number: 2127-38		Drawn By: Eng
Prepared Date: 5/6/20	Revision Date: 4/21/22	Revision Number: Rev #1	Sheet: 2 of 2