



## MILAN ISLAND

SKU:2123-60



The Milan Island is a modern back-to-back styling island created for two students to practice their techniques. The styling island offers a professional design, perfect for your students to practice and learn.

### TECHNICAL INFORMATION

---

- 60"W x 32"D x 82"H
- Both sides feature:
- Two drawers
  - Two storage cabinets with industrial hinges
  - Quad-electric
  - Counter mounted tool holders
  - Mirror
- (also available as a single station p/n 2122-60)

### SHIPPING INFORMATION

---

Item generally ships via Freight(Truck) service

- Weight: 500 lbs
- Dimensions: 2 pallets

### WARRANTY

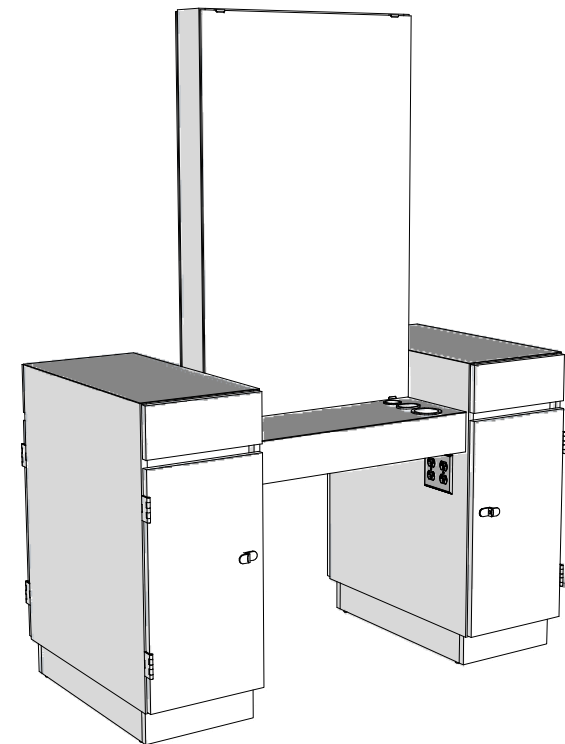
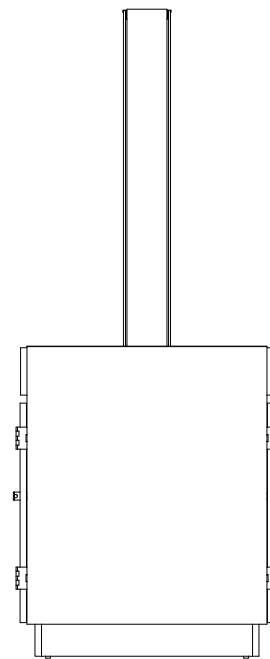
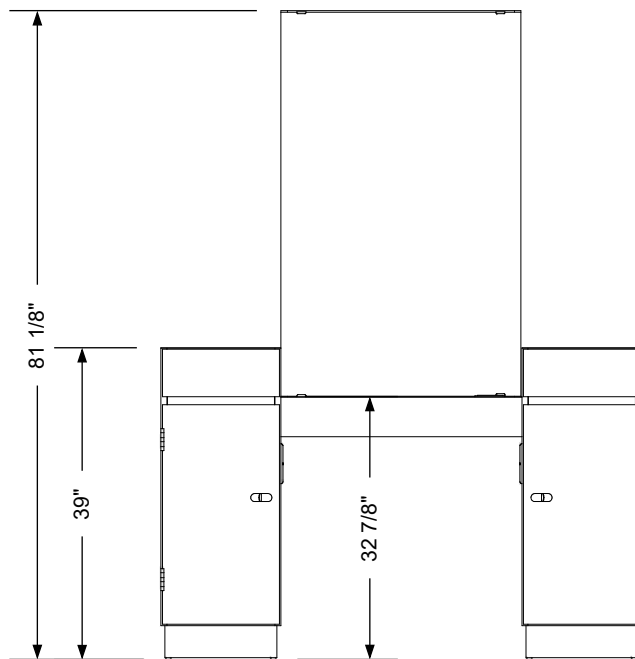
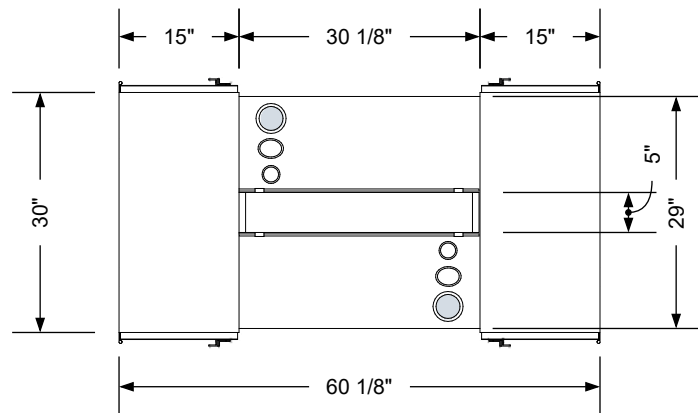
---

#### 3 Years:

- Ball-Bearing Drawer Slides
- Cabinet hinges

#### 1 Year:

- All remaining components, unless noted otherwise, are guaranteed for a period of one year from the date of purchase.



## Additional Information

Assembly required - yes  
 Electrical required - yes  
 Plumbing required - no  
 Wall blocking required - no  
 COM yardage/laminate usage -  
 4"h laminated plywood toe + 1/4"h glides  
 Other (specify) - n/a  
 Other (specify) - n/a

## Specification Drawing

This **Specification Drawing** is intended for communicating the basic description, function, appearance, dimensions, features, and installation of an item as manufactured by Collins Manufacturing Company. Because this drawing does not contain project specific information such as quantities, finishes, or options, it is not an approval drawing and does not require a signature. This drawing remains the property of Collins Manufacturing Company and must not be used against the interests of Collins Manufacturing Company.

## Product Information

**collins**

Collins Manufacturing  
 2000 Bowser Road  
 Cookeville, TN 38506

Name:

**Milan Island**

Size:

**NTS**

Part Number:

**2123-60**

Drawn By:

**Eng**

Prepared Date:

**5/8/20**

Revision Date:

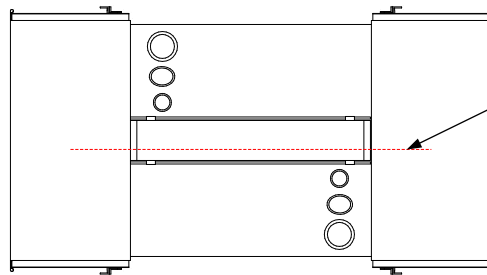
**Date**

Revision Number:

**Rev #**

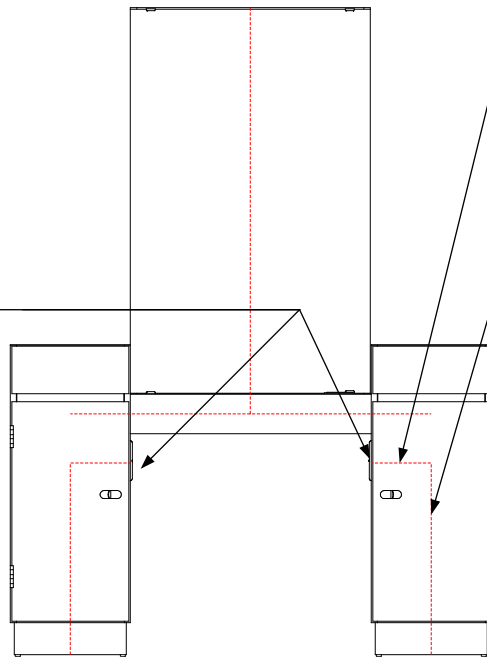
Sheet:

**1 of 2**



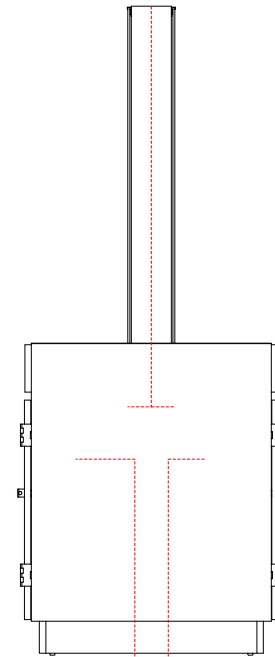
Pathways for electrical.

The island includes 20 amp fourplex outlets mounted below the countertop on both inboard ends of the cabinets. The tools plug into these outlets.



The electrician is responsible for connecting power to the fourplex outlets up from the floor or down from the ceiling along the indicated path. Provide a 20 amp, switched outlet for each student station (two per double island).

Electrical connections may be made as long as the stub outs fall within the footprint of the toe kicks. However, some minor modifications may be necessary. Also, electrical power may be ran through the cabinets of adjacent stations for inline arrangements.



### Electrical stub out detail

#### Additional Information

Assembly required - yes  
Electrical required - yes  
Plumbing required - no  
Wall blocking required - no  
COM yardage/laminate usage -  
4"h laminated plywood toe + 1/4"h glides  
Other (specify) - n/a  
Other (specify) - n/a

#### Specification Drawing

This **Specification Drawing** is intended for communicating the basic description, function, appearance, dimensions, features, and installation of an item as manufactured by Collins Manufacturing Company. Because this drawing does not contain project specific information such as quantities, finishes, or options, it is not an approval drawing and does not require a signature. This drawing remains the property of Collins Manufacturing Company and must not be used against the interests of Collins Manufacturing Company.

#### Product Information

 Collins Manufacturing 2000 Bowser Road Cookeville, TN 38506			
Name: Milan Island			
Size: NTS	Part Number: 2123-60	Drawn By: Eng	
Prepared Date: 5/8/20	Revision Date: Date	Revision Number: Rev #	Sheet: 2 of 2