



## QUAD ISLAND

SKU:2142-48

Our Quad Styling Island is a space saving unit that provides a work space and storage for four students. This unit features a drawer, cabinet and work space in one convenient design.

### TECHNICAL INFORMATION

- 48"W x 48"D x 66"H
- Each of the four sides feature:
- Utility drawer
  - Storage cabinet w/ shelf
  - Tool panel
  - Quad electric outlet

### SHIPPING INFORMATION

Item generally ships via Freight(Truck) service

- Weight: 600 lbs
- Dimensions: 3 pallets

### WARRANTY

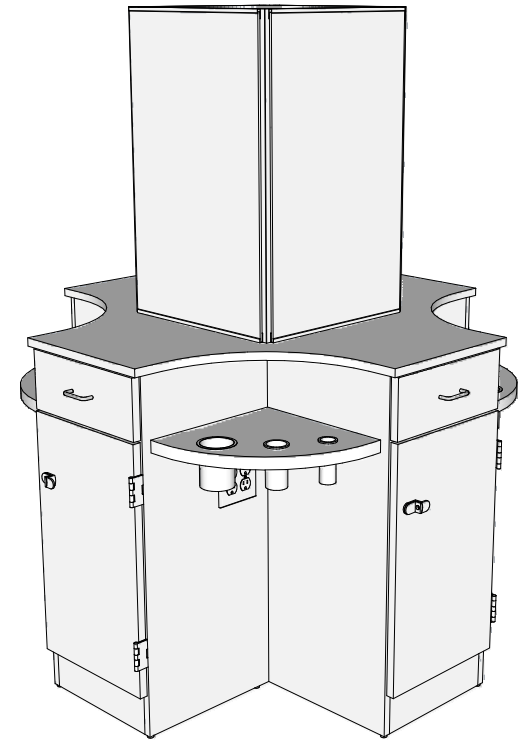
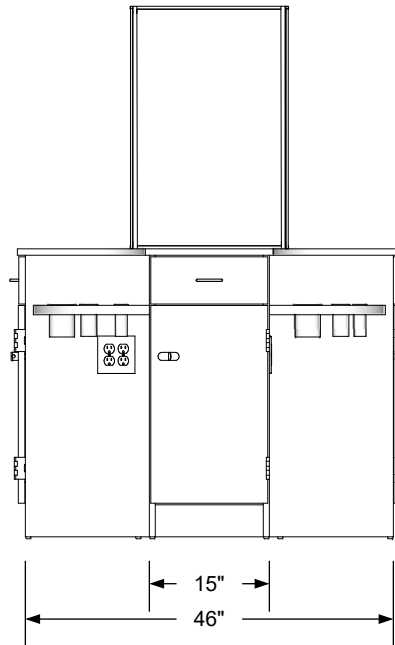
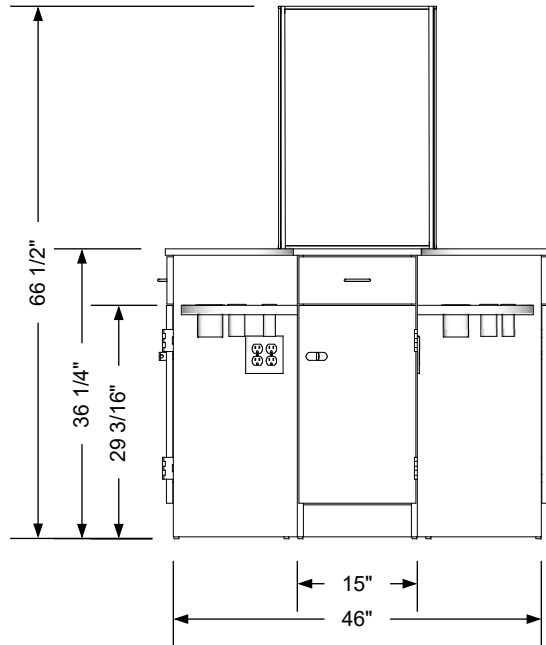
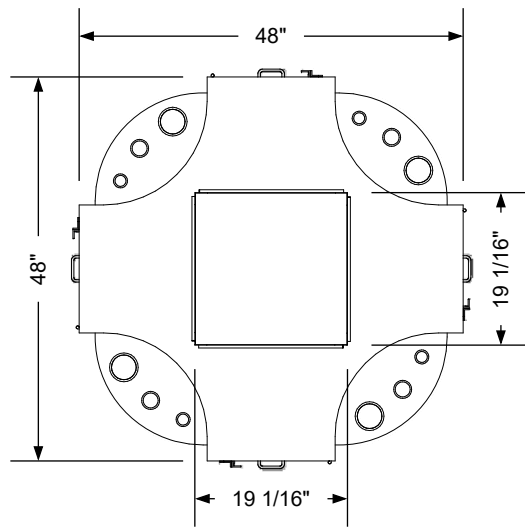
#### 3 Years:

- Ball-Bearing Drawer Slides
- Cabinet hinges

#### 1 Year:

- All remaining components, unless noted otherwise, are guaranteed for a period of one year from the date of purchase.






## Additional Information

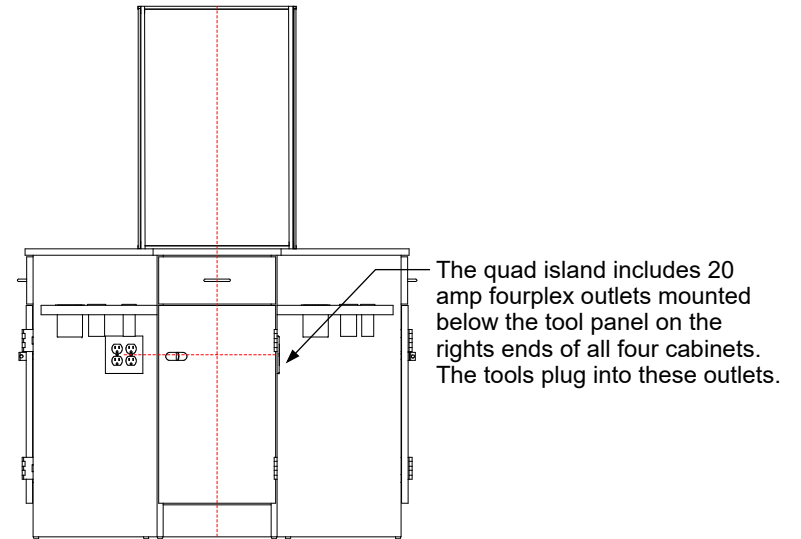
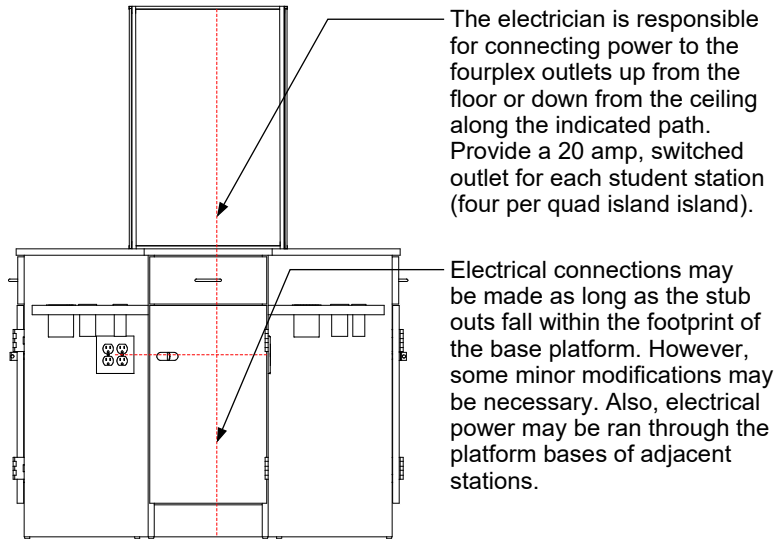
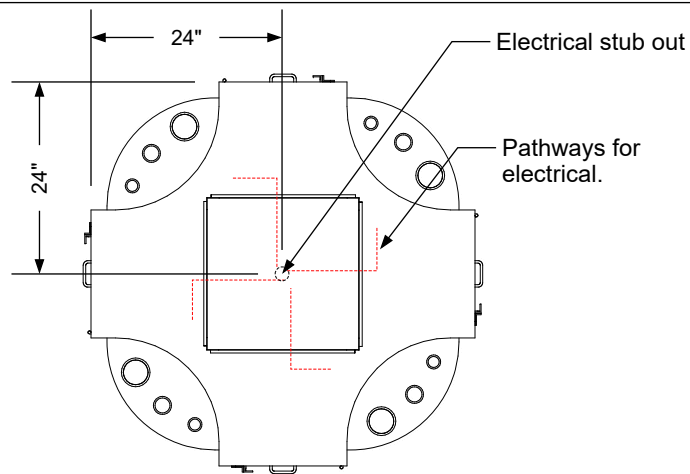
Assembly required - yes  
 Electrical required - yes  
 Plumbing required - no  
 Wall blocking required - no  
 COM yardage/laminate usage - 94 sf  
 4"h laminated plywood toe + 1/4"h glides  
 Other (specify) - n/a  
 Other (specify) - n/a

## Specification Drawing

This **Specification Drawing** is intended for communicating the basic description, function, appearance, dimensions, features, and installation of an item as manufactured by Collins Manufacturing Company. Because this drawing does not contain project specific information such as quantities, finishes, or options, it is not an approval drawing and does not require a signature. This drawing remains the property of Collins Manufacturing Company and must not be used against the interests of Collins Manufacturing Company.

## Product Information

 Collins Manufacturing 2000 Bowser Road Cookeville, TN 38506			
Name: Quad Island			
Size: NTS	Part Number: 2142-48	Drawn By: Eng	
Prepared Date: 5/8/20	Revision Date: Date	Revision Number: Rev #	Sheet: 1 of 2



### Electrical stub out detail


#### Additional Information

Assembly required - yes  
 Electrical required - yes  
 Plumbing required - no  
 Wall blocking required - no  
 COM yardage/laminate usage - 94 sf  
 4"h laminated plywood toe + 1/4"h glides  
 Other (specify) - n/a  
 Other (specify) - n/a

#### Specification Drawing

This **Specification Drawing** is intended for communicating the basic description, function, appearance, dimensions, features, and installation of an item as manufactured by Collins Manufacturing Company. Because this drawing does not contain project specific information such as quantities, finishes, or options, it is not an approval drawing and does not require a signature. This drawing remains the property of Collins Manufacturing Company and must not be used against the interests of Collins Manufacturing Company.

#### Product Information

 Collins Manufacturing 2000 Bowser Road Cookeville, TN 38506			
Name: Quad Island			
Size: NTS	Part Number: 2142-48	Drawn By: Eng	
Prepared Date: 5/8/20	Revision Date: Date	Revision Number: Rev #	Sheet: 2 of 2